

The Michigan 1st Congressional District

Table 1. The Michigan 1st Congressional District Description

Area (square miles)	24,887
Navigable Waterbody (square miles)	4,452
Total Population (2007)	668,705
Population Density (per square mile) (2007)	26
Persons 18+ (2007)	534,653
Number of Households (2007)	284,351

Table 2. Registered Boats Owned by Residents Residing in the Michigan 1st Congressional District

	1st CD	State Total
Number of Registered Boats	116,034	877,398
Type of Registered Boats		
Power Boats	102,861	733,531
Outboards	83,686	544,140
Inboards	1,730	25,465
Stern Drives	16,594	153,500
Jet Boats	851	10,426
Personal Watercraft	9,171	110,969
Sailboats	4,002	32,898
Size of Registered Boats		
≤ 15'	60,715	423,705
16'-24'	50,211	397,464
25'-39'	4,792	51,824
40' +	316	4,405
Per Capita Ownership of Registered Boats		
All Population	174/1000	87/1000
Persons 18 +	217/1000	118/1000
Households	408/1000	220/1000

Table 3. Boating-related Businesses Based on NAICS Codes

Category	1st CD	State Total
Boat Building		
No. of Businesses	4	39
No. of Employees	14	2,032
Total Sales (\$ Millions)	\$0.7	\$277.0
Motors & Engines Mfg.		
No. of Businesses	-	2
No. of Employees	-	5
Total Sales (\$ Millions)	-	\$0.3
Accessories & Supplies Mfg.		
No. of Businesses	2	38
No. of Employees	4	213
Total Sales (\$ Millions)	\$0.2	\$15.3
Dealers & Wholesalers		
No. of Businesses	74	437
No. of Employees	394	2,419
Total Sales (\$ Millions)	\$55.9	\$458.7
Boating Services		
No. of Businesses	99	453
No. of Employees	425	2,436
Total Sales (\$ Millions)	\$36.1	\$161.1

Figure 1. Location of the Michigan 1st Congressional District

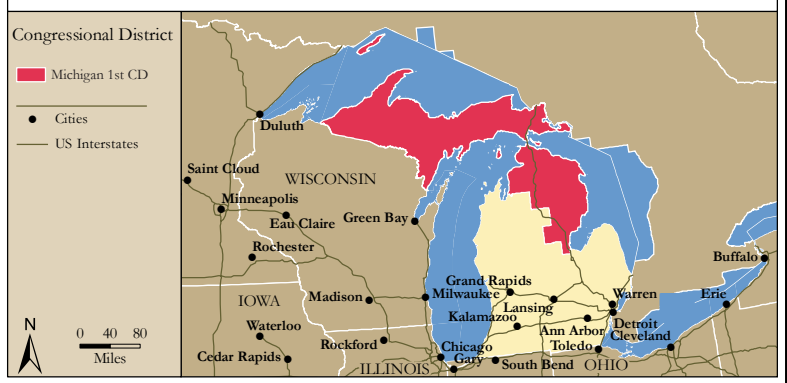


Figure 2. Navigable Waters of the Michigan 1st Congressional District

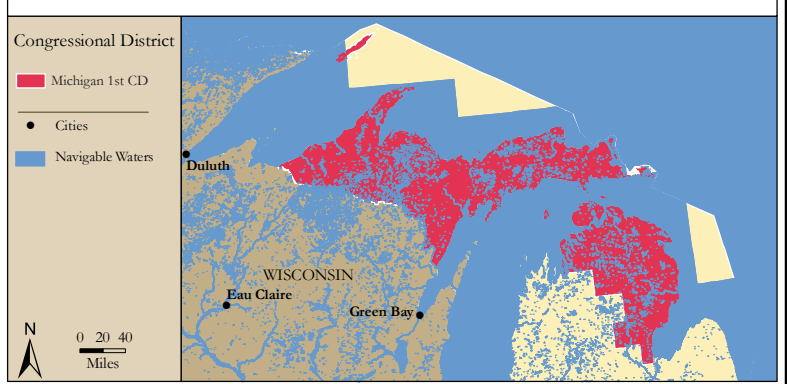


Figure 3. Number of Registered Boats by Zipcode within the Michigan 1st Congressional District

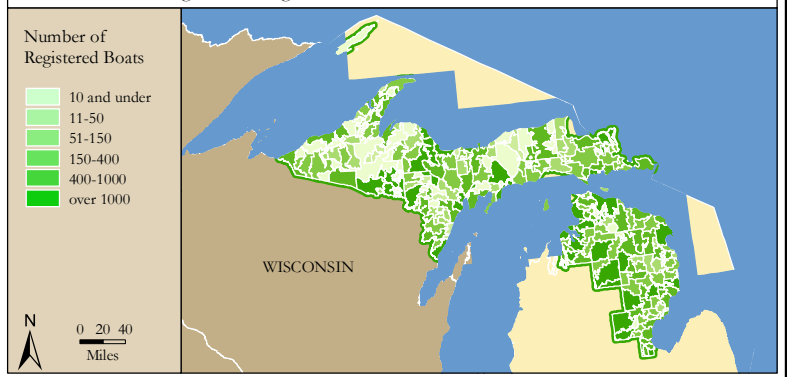
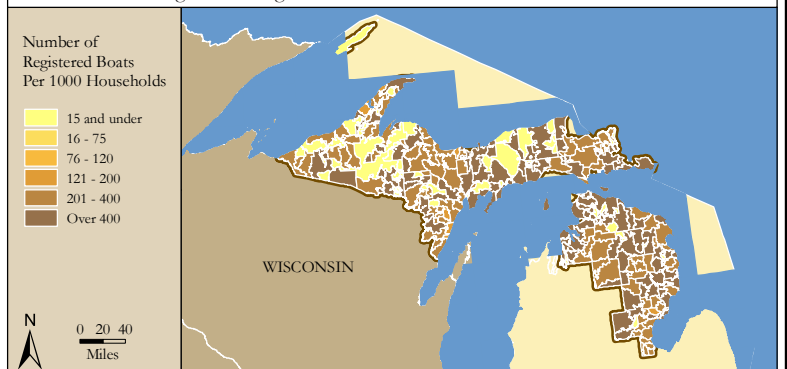


Figure 4. Per Capita (Household) Ownership of Registered Boats by Zipcode within the Michigan 1st Congressional District



Economic Significance of Boating

Table 1. Craft and Trip Expenses by Power and Sailboats Registered in the Michigan 1st Congressional District

Category	Boat Type and Size								Total
	Power <15'	Power 16' - 24'	Power 25' - 39'	Power 40'+	Sail <15'	Sail 16' - 24'	Sail 25' - 39'	Sail 40+	
Number of boats (Thousands of boats)	49.9	48.7	4.0	0.3	1.7	1.5	0.8	0.1	106.9
Annual craft spending (\$ per boat per year)	\$457.9	\$1,655.6	\$7,464.6	\$25,299.0	\$488.7	\$1,830.2	\$7,439.8	\$18,328.8	
Total craft spending (\$ Millions)	\$22.8	\$80.7	\$29.8	\$6.7	\$0.8	\$2.7	\$5.9	\$1.0	\$150.4
Total boat days (Thousands of days)	811.7	1,220.6	122.6	11.5	32.6	28.3	24.9	2.4	2,254.6
Total trip spending (\$ per boat per year)	\$935.9	\$2,148.4	\$4,574.4	\$8,039.6	\$1,009.7	\$1,009.7	\$1,963.9	\$5,204.7	
Total trip spending (\$ Millions)	\$46.7	\$104.7	\$18.3	\$2.1	\$1.7	\$1.5	\$1.6	\$0.3	\$176.8
Total craft & trip spending (\$ Millions)	\$69.5	\$185.4	\$48.1	\$8.8	\$2.5	\$4.2	\$7.5	\$1.2	\$327.2

Table 2. Total Spending on Boat Trips by Power and Sailboat Owners Registered in the Michigan 1st CD

Category	Total (\$ Millions)	Percentage
Lodging	\$6.9	4%
Marina services	\$14.5	8%
Restaurant	\$32.4	18%
Groceries	\$31.9	18%
Boat fuel	\$40.3	23%
Auto fuel	\$33.0	19%
Repair & Maintenance	-	-
Marine supplies	-	-
Recreation & Entertainment	\$7.6	4%
Shopping	\$5.7	3%
Other services	-	-
Other goods	\$4.5	3%
Total	\$176.8	100%

Table 3. Total Annual Craft Spending (not including purchases of boats) by Power and Sailboat Owners Registered in the Michigan 1st CD

Category	Total (\$ Millions)	Percentage
Slip	\$21.3	14%
Loan Payments	\$46.4	31%
Replacement Motors	\$2.1	1%
Replacement Trailers	\$0.5	0%
Insurance	\$13.8	9%
Repairs	\$30.2	20%
Accessories	\$29.9	20%
Taxes	\$6.3	4%
Total	\$150.4	100%

Table 4. Economic Significance of Trip Spending and Annual Craft Spending by Power and Sailboats Registered in the Michigan 1st CD

	Trip Spending	Annual Craft Spending	Total
Direct Effects			
Sales (\$ Millions)	\$149.3	\$95.9	\$245.2
Jobs	1,563.4	1,104.2	2,667.6
Labor Income (\$ Millions)	\$44.9	\$37.1	\$81.9
Value Added (\$ Millions)	\$71.9	\$62.0	\$133.9
Total Effects			
Sales (\$ Millions)	\$401.3	\$243.1	\$644.4
Jobs	3,319.0	2,190.1	5,509.1
Labor Income (\$ Millions)	\$122.8	\$85.8	\$208.6
Value Added (\$ Millions)	\$207.4	\$143.1	\$350.5

Table 5. Economic Significance of Power and Sailboats Registered in the Michigan 1st CD

Sector/Spending category	Sales (\$ Millions)	Jobs	Labor Income (\$Millions)	Value Added (\$Millions)
Direct Effects				
Lodging	\$6.9	86.4	\$2.8	\$4.9
Marina Services	\$35.8	459.9	\$12.5	\$22.5
Restaurant	\$32.4	641.9	\$11.0	\$15.6
Recreation & Entertainment	\$7.6	98.0	\$2.7	\$4.8
Repair & Maintenance	\$30.2	377.6	\$11.2	\$15.7
Insurance & Credit	\$16.8	122.2	\$7.2	\$15.4
Gas Service	\$16.3	194.0	\$7.8	\$12.4
Other Retail Trade	\$24.2	452.9	\$11.8	\$19.0
Wholesale Trade	\$15.9	101.7	\$6.8	\$12.1
Other Local Production of Goods	\$59.0	133.0	\$8.1	\$11.4
Total Direct Effects	\$245.2	2,667.6	\$81.9	\$133.9
Secondary Effects	\$399.2	2,841.5	\$126.7	\$216.6
Total Effects	\$644.4	5,509.1	\$208.6	\$350.5

The Michigan 2nd Congressional District

Table 1. The Michigan 2nd Congressional District Description

Area (square miles)	5,365
Navigable Waterbody (square miles)	360
Total Population (2007)	710,669
Population Density (per square mile) (2007)	129
Persons 18+ (2007)	533,623
Number of Households (2007)	265,502

Table 2. Registered Boats Owned by Residents Residing in the Michigan 2nd Congressional District

	2nd CD	State Total
Number of Registered Boats	85,004	877,398
Type of Registered Boats		
Power Boats	71,779	733,531
Outboards	55,258	544,140
Inboards	2,152	25,465
Stern Drives	13,614	153,500
Jet Boats	755	10,426
Personal Watercraft	9,616	110,969
Sailboats	3,609	32,898
Size of Registered Boats		
≤ 15'	43,950	423,705
16'-24'	35,945	397,464
25'-39'	4,641	51,824
40' +	468	4,405
Per Capita Ownership of Registered Boats		
All Population	120/1000	87/1000
Persons 18 +	159/1000	118/1000
Households	320/1000	220/1000

Table 3. Boating-related Businesses Based on NAICS Codes

Category	2nd CD	State Total
Boat Building		
No. of Businesses	10	39
No. of Employees	1,535	2,032
Total Sales (\$ Millions)	\$170.5	\$277.0
Motors & Engines Mfg.		
No. of Businesses	-	2
No. of Employees	-	5
Total Sales (\$ Millions)	-	\$0.3
Accessories & Supplies Mfg.		
No. of Businesses	8	38
No. of Employees	58	213
Total Sales (\$ Millions)	\$4.0	\$15.3
Dealers & Wholesalers		
No. of Businesses	75	437
No. of Employees	377	2,419
Total Sales (\$ Millions)	\$72.5	\$458.7
Boating Services		
No. of Businesses	70	453
No. of Employees	380	2,436
Total Sales (\$ Millions)	\$20.5	\$161.1

Figure 1. Location of the Michigan 2nd Congressional District



Figure 2. Navigable Waters of the Michigan 2nd Congressional District

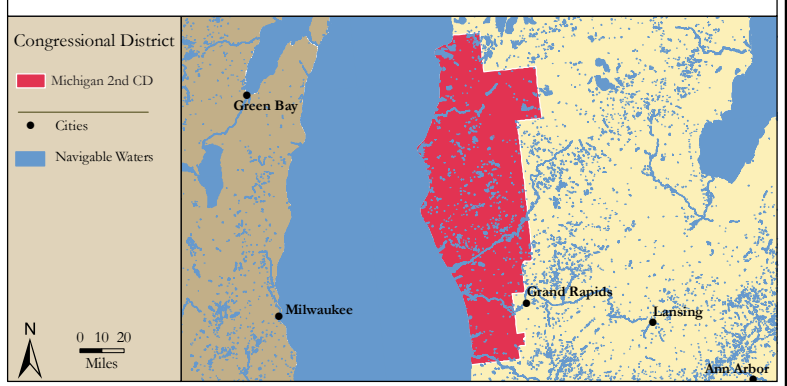


Figure 3. Number of Registered Boats by Zipcode within the Michigan 2nd Congressional District

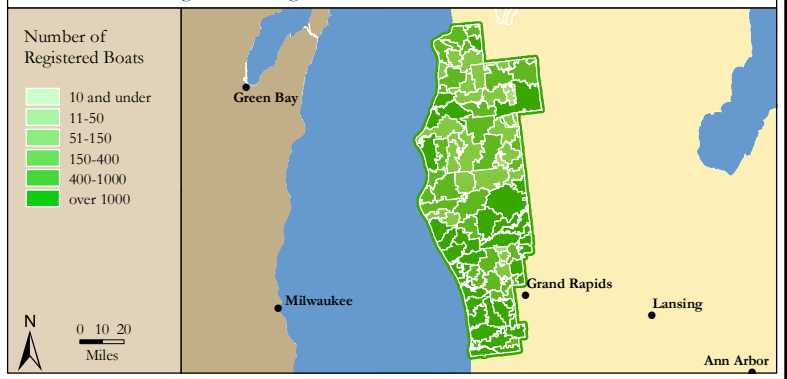
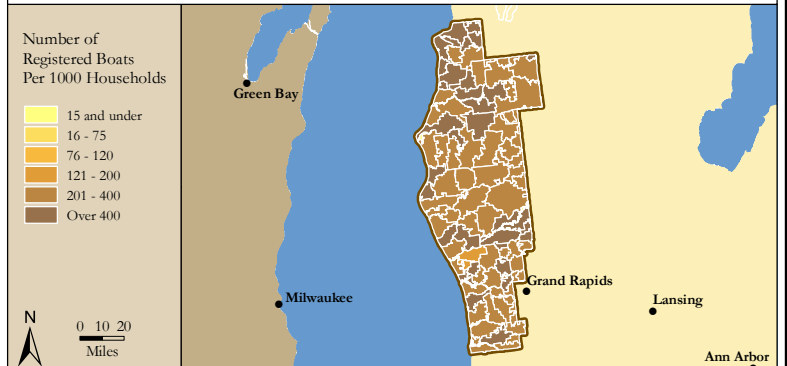


Figure 4. Per Capita (Household) Ownership of Registered Boats by Zipcode within the Michigan 2nd Congressional District



Economic Significance of Boating

Table 1. Craft and Trip Expenses by Power and Sailboats Registered in the Michigan 2nd Congressional District

Category	Boat Type and Size								Total
	Power <15'	Power 16' - 24'	Power 25' - 39'	Power 40'+	Sail <15'	Sail 16' - 24'	Sail 25' - 39'	Sail 40+	
Number of boats (Thousands of boats)	32.9	34.8	3.7	0.4	1.4	1.2	0.9	0.1	75.4
Annual craft spending (\$ per boat per year)	\$457.9	\$1,655.6	\$7,464.6	\$25,299.0	\$488.7	\$1,830.2	\$7,439.8	\$18,328.8	
Total craft spending (\$ Millions)	\$15.1	\$57.5	\$27.7	\$9.6	\$0.7	\$2.2	\$6.9	\$1.6	\$121.3
Total boat days (Thousands of days)	536.2	870.1	114.0	16.5	27.0	23.1	29.1	4.1	1,620.0
Total trip spending (\$ per boat per year)	\$935.9	\$2,148.4	\$4,574.4	\$8,039.6	\$1,009.7	\$1,009.7	\$1,963.9	\$5,204.7	
Total trip spending (\$ Millions)	\$30.8	\$74.7	\$17.0	\$3.0	\$1.4	\$1.2	\$1.8	\$0.5	\$130.4
Total craft & trip spending (\$ Millions)	\$45.9	\$132.2	\$44.7	\$12.6	\$2.1	\$3.4	\$8.7	\$2.1	\$251.7

Table 2. Total Spending on Boat Trips by Power and Sailboat Owners Registered in the Michigan 2nd CD

Category	Total (\$ Millions)	Percentage
Lodging	\$5.0	4%
Marina services	\$11.0	8%
Restaurant	\$24.2	19%
Groceries	\$23.5	18%
Boat fuel	\$30.4	23%
Auto fuel	\$23.5	18%
Repair & Maintenance	-	-
Marine supplies	-	-
Recreation & Entertainment	\$5.5	4%
Shopping	\$4.2	3%
Other services	-	-
Other goods	\$3.3	3%
Total	\$130.4	100%

Table 3. Total Annual Craft Spending (not including purchases of boats) by Power and Sailboat Owners Registered in the Michigan 2nd CD

Category	Total (\$ Millions)	Percentage
Slip	\$18.0	15%
Loan Payments	\$37.8	31%
Replacement Motors	\$1.5	1%
Replacement Trailers	\$0.4	0%
Insurance	\$10.9	9%
Repairs	\$24.3	20%
Accessories	\$23.4	19%
Taxes	\$5.0	4%
Total	\$121.3	100%

Table 4. Economic Significance of Trip Spending and Annual Craft Spending by Power and Sailboats Registered in the Michigan 2nd CD

	Trip Spending	Annual Craft Spending	Total
Direct Effects			
Sales (\$ Millions)	\$110.7	\$77.1	\$187.9
Jobs	1,158.0	890.9	2,048.9
Labor Income (\$ Millions)	\$33.2	\$29.8	\$63.0
Value Added (\$ Millions)	\$53.2	\$49.8	\$103.0
Total Effects			
Sales (\$ Millions)	\$297.5	\$195.7	\$493.2
Jobs	2,458.4	1,765.7	4,224.1
Labor Income (\$ Millions)	\$90.9	\$69.0	\$160.0
Value Added (\$ Millions)	\$153.6	\$115.2	\$268.7

Table 5. Economic Significance of Power and Sailboats Registered in the Michigan 2nd CD

Sector/Spending category	Sales (\$ Millions)	Jobs	Labor Income (\$Millions)	Value Added (\$Millions)
Direct Effects				
Lodging	\$5.0	61.8	\$2.0	\$3.5
Marina Services	\$29.1	373.5	\$10.2	\$18.3
Restaurant	\$24.2	478.9	\$8.2	\$11.6
Recreation & Entertainment	\$5.5	71.0	\$1.9	\$3.5
Repair & Maintenance	\$24.3	303.7	\$9.0	\$12.6
Insurance & Credit	\$13.4	96.9	\$5.7	\$12.2
Gas Service	\$12.0	142.5	\$5.8	\$9.1
Other Retail Trade	\$18.3	344.4	\$8.9	\$14.5
Wholesale Trade	\$11.9	76.2	\$5.1	\$9.0
Other Local Production of Goods	\$44.2	99.9	\$6.1	\$8.5
Total Direct Effects	\$187.9	2,048.9	\$63.0	\$103.0
Secondary Effects	\$305.3	2,175.2	\$97.0	\$165.8
Total Effects	\$493.2	4,224.1	\$160.0	\$268.7

The Michigan 3rd Congressional District

Table 1. The Michigan 3rd Congressional District Description

Area (square miles)	1,854
Navigable Waterbody (square miles)	69
Total Population (2007)	698,650
Population Density (per square mile) (2007)	368
Persons 18+ (2007)	513,357
Number of Households (2007)	261,568

Table 2. Registered Boats Owned by Residents Residing in the Michigan 3rd Congressional District

	3rd CD	State Total
Number of Registered Boats	63,700	877,398
Type of Registered Boats		
Power Boats	52,218	733,531
Outboards	40,144	544,140
Inboards	1,932	25,465
Stern Drives	9,503	153,500
Jet Boats	639	10,426
Personal Watercraft	8,986	110,969
Sailboats	2,496	32,898
Size of Registered Boats		
≤ 15'	32,663	423,705
16'-24'	27,722	397,464
25'-39'	2,956	51,824
40' +	359	4,405
Per Capita Ownership of Registered Boats		
All Population	91/1000	87/1000
Persons 18 +	124/1000	118/1000
Households	244/1000	220/1000

Table 3. Boating-related Businesses Based on NAICS Codes

Category	3rd CD	State Total
Boat Building		
No. of Businesses	1	39
No. of Employees	2	2,032
Total Sales (\$ Millions)	\$0.1	\$277.0
Motors & Engines Mfg.		
No. of Businesses	-	2
No. of Employees	-	5
Total Sales (\$ Millions)	-	\$0.3
Accessories & Supplies Mfg.		
No. of Businesses	-	38
No. of Employees	-	213
Total Sales (\$ Millions)	-	\$15.3
Dealers & Wholesalers		
No. of Businesses	19	437
No. of Employees	74	2,419
Total Sales (\$ Millions)	\$15.7	\$458.7
Boating Services		
No. of Businesses	6	453
No. of Employees	5	2,436
Total Sales (\$ Millions)	\$0.5	\$161.1

Figure 1. Location of the Michigan 3rd Congressional District



Figure 2. Navigable Waters of the Michigan 3rd Congressional District

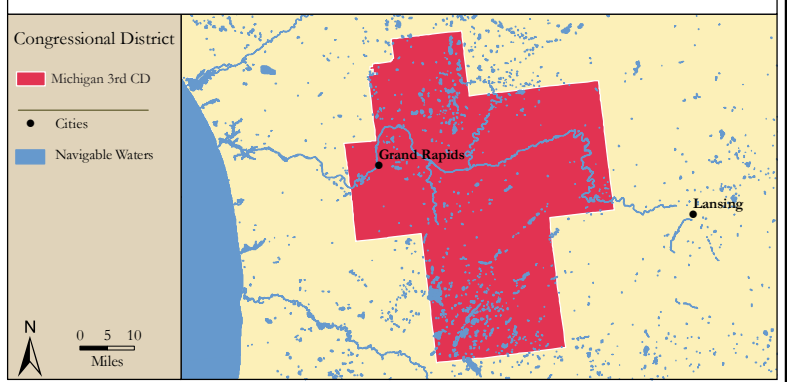


Figure 3. Number of Registered Boats by Zipcode within the Michigan 3rd Congressional District

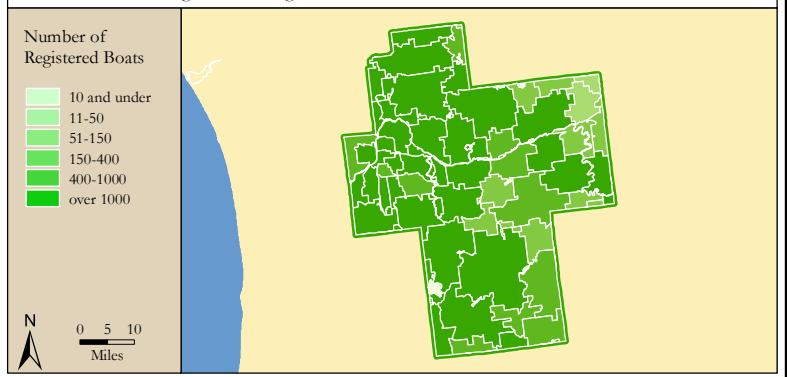
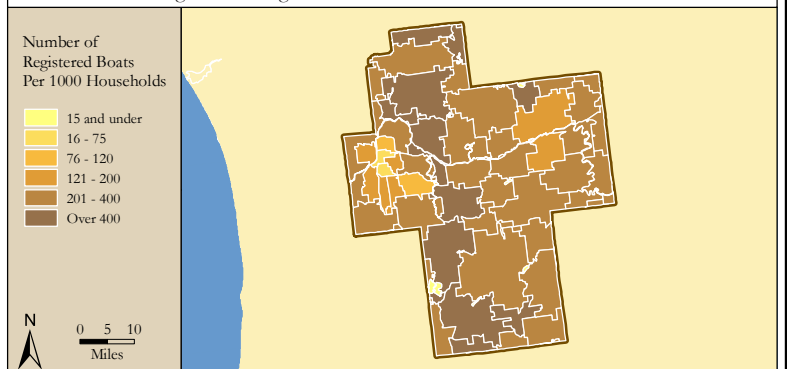


Figure 4. Per Capita (Household) Ownership of Registered Boats by Zipcode within the Michigan 3rd Congressional District



Economic Significance of Boating

Table 1. Craft and Trip Expenses by Power and Sailboats Registered in the Michigan 3rd Congressional District

Category	Boat Type and Size								Total
	Power <15'	Power 16' - 24'	Power 25' - 39'	Power 40'+	Sail <15'	Sail 16' - 24'	Sail 25' - 39'	Sail 40+	
Number of boats (Thousands of boats)	22.6	26.9	2.5	0.3	1.1	0.9	0.5	0.1	54.7
Annual craft spending (\$ per boat per year)	\$457.9	\$1,655.6	\$7,464.6	\$25,299.0	\$488.7	\$1,830.2	\$7,439.8	\$18,328.8	
Total craft spending (\$ Millions)	\$10.4	\$44.5	\$18.4	\$7.5	\$0.5	\$1.6	\$3.7	\$1.1	\$87.6
Total boat days (Thousands of days)	368.2	672.3	75.4	12.9	20.6	16.8	15.6	2.8	1,184.7
Total trip spending (\$ per boat per year)	\$935.9	\$2,148.4	\$4,574.4	\$8,039.6	\$1,009.7	\$1,009.7	\$1,963.9	\$5,204.7	
Total trip spending (\$ Millions)	\$21.2	\$57.7	\$11.2	\$2.4	\$1.1	\$0.9	\$1.0	\$0.3	\$95.7
Total craft & trip spending (\$ Millions)	\$31.5	\$102.1	\$29.6	\$9.9	\$1.6	\$2.5	\$4.7	\$1.5	\$183.4

Table 2. Total Spending on Boat Trips by Power and Sailboat Owners Registered in the Michigan 3rd CD

Category	Total (\$ Millions)	Percentage
Lodging	\$3.7	4%
Marina services	\$8.0	8%
Restaurant	\$17.7	18%
Groceries	\$17.3	18%
Boat fuel	\$22.2	23%
Auto fuel	\$17.4	18%
Repair & Maintenance	-	-
Marine supplies	-	-
Recreation & Entertainment	\$4.0	4%
Shopping	\$3.0	3%
Other services	-	-
Other goods	\$2.4	3%
Total	\$95.7	100%

Table 3. Total Annual Craft Spending (not including purchases of boats) by Power and Sailboat Owners Registered in the Michigan 3rd CD

Category	Total (\$ Millions)	Percentage
Slip	\$12.8	15%
Loan Payments	\$27.5	31%
Replacement Motors	\$1.1	1%
Replacement Trailers	\$0.3	0%
Insurance	\$7.9	9%
Repairs	\$17.5	20%
Accessories	\$16.9	19%
Taxes	\$3.6	4%
Total	\$87.6	100%

Table 4. Economic Significance of Trip Spending and Annual Craft Spending by Power and Sailboats Registered in the Michigan 3rd CD

	Trip Spending	Annual Craft Spending	Total
Direct Effects			
Sales (\$ Millions)	\$81.2	\$55.5	\$136.6
Jobs	848.2	639.8	1,488.0
Labor Income (\$ Millions)	\$24.3	\$21.4	\$45.8
Value Added (\$ Millions)	\$39.0	\$35.9	\$74.8
Total Effects			
Sales (\$ Millions)	\$218.1	\$140.7	\$358.8
Jobs	1,801.5	1,268.4	3,069.9
Labor Income (\$ Millions)	\$66.7	\$49.6	\$116.3
Value Added (\$ Millions)	\$112.6	\$82.8	\$195.4

Table 5. Economic Significance of Power and Sailboats Registered in the Michigan 3rd CD

Sector/Spending category	Sales (\$ Millions)	Jobs	Labor Income (\$Millions)	Value Added (\$Millions)
Direct Effects				
Lodging	\$3.7	46.2	\$1.5	\$2.6
Marina Services	\$20.7	266.3	\$7.3	\$13.1
Restaurant	\$17.7	350.2	\$6.0	\$8.5
Recreation & Entertainment	\$4.0	51.9	\$1.4	\$2.5
Repair & Maintenance	\$17.5	218.6	\$6.5	\$9.1
Insurance & Credit	\$9.7	70.5	\$4.2	\$8.9
Gas Service	\$8.8	104.9	\$4.2	\$6.7
Other Retail Trade	\$13.3	250.6	\$6.5	\$10.5
Wholesale Trade	\$8.7	55.8	\$3.7	\$6.6
Other Local Production of Goods	\$32.4	73.0	\$4.5	\$6.3
Total Direct Effects	\$136.6	1,488.0	\$45.8	\$74.8
Secondary Effects	\$222.1	1,581.9	\$70.6	\$120.6
Total Effects	\$358.8	3,069.9	\$116.3	\$195.4

The Michigan 4th Congressional District

Table 1. The Michigan 4th Congressional District Description

Area (square miles)	7,451
Navigable Waterbody (square miles)	629
Total Population (2007)	688,271
Population Density (per square mile) (2007)	90
Persons 18+ (2007)	536,916
Number of Households (2007)	268,745

Table 2. Registered Boats Owned by Residents Residing in the Michigan 4th Congressional District

	4th CD	State Total
Number of Registered Boats	94,302	877,398
Type of Registered Boats		
Power Boats	81,595	733,531
Outboards	64,732	544,140
Inboards	1,599	25,465
Stern Drives	14,311	153,500
Jet Boats	953	10,426
Personal Watercraft	8,747	110,969
Sailboats	3,960	32,898
Size of Registered Boats		
≤ 15'	47,209	423,705
16'-24'	42,906	397,464
25'-39'	3,950	51,824
40' +	237	4,405
Per Capita Ownership of Registered Boats		
All Population	137/1000	87/1000
Persons 18 +	176/1000	118/1000
Households	351/1000	220/1000

Table 3. Boating-related Businesses Based on NAICS Codes

Category	4th CD	State Total
Boat Building		
No. of Businesses	7	39
No. of Employees	326	2,032
Total Sales (\$ Millions)	\$71.9	\$277.0
Motors & Engines Mfg.		
No. of Businesses	1	2
No. of Employees	3	5
Total Sales (\$ Millions)	\$0.3	\$0.3
Accessories & Supplies Mfg.		
No. of Businesses	10	38
No. of Employees	45	213
Total Sales (\$ Millions)	\$3.7	\$15.3
Dealers & Wholesalers		
No. of Businesses	39	437
No. of Employees	247	2,419
Total Sales (\$ Millions)	\$40.3	\$458.7
Boating Services		
No. of Businesses	44	453
No. of Employees	142	2,436
Total Sales (\$ Millions)	\$10.6	\$161.1

Figure 1. Location of the Michigan 4th Congressional District

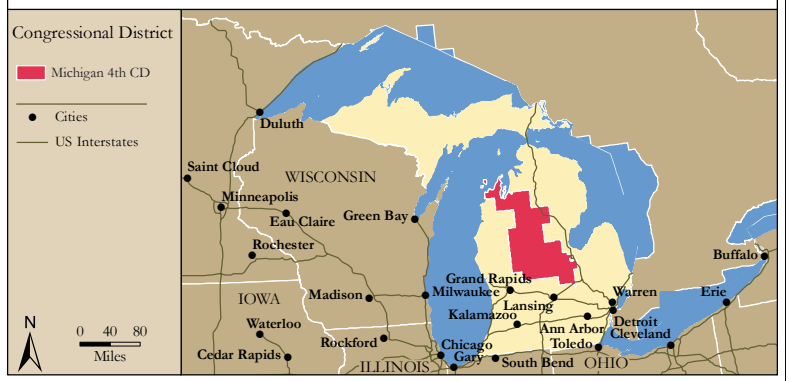


Figure 2. Navigable Waters of the Michigan 4th Congressional District

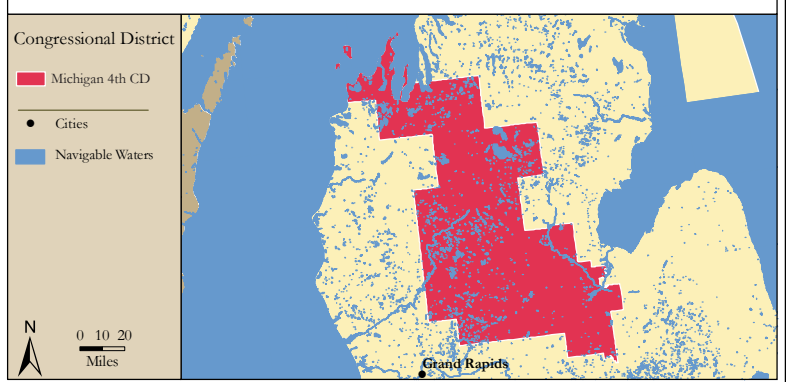


Figure 3. Number of Registered Boats by Zipcode within the Michigan 4th Congressional District

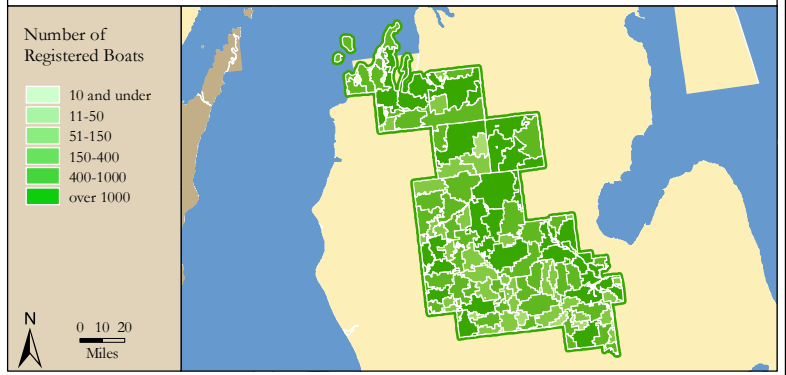
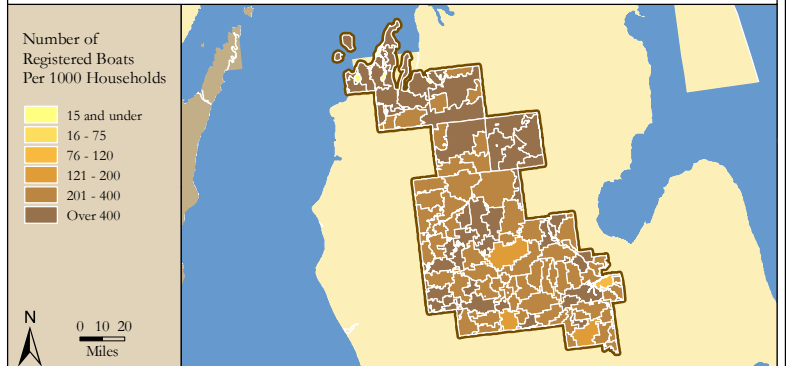


Figure 4. Per Capita (Household) Ownership of Registered Boats by Zipcode within the Michigan 4th Congressional District



Economic Significance of Boating

Table 1. Craft and Trip Expenses by Power and Sailboats Registered in the Michigan 4th Congressional District

Category	Boat Type and Size								Total
	Power <15'	Power 16' - 24'	Power 25' - 39'	Power 40'+	Sail <15'	Sail 16' - 24'	Sail 25' - 39'	Sail 40+	
Number of boats (Thousands of boats)	36.5	41.6	3.2	0.2	1.9	1.3	0.7	0.1	85.6
Annual craft spending (\$ per boat per year)	\$457.9	\$1,655.6	\$7,464.6	\$25,299.0	\$488.7	\$1,830.2	\$7,439.8	\$18,328.8	
Total craft spending (\$ Millions)	\$16.7	\$69.0	\$24.2	\$4.5	\$0.9	\$2.3	\$5.2	\$1.1	\$124.0
Total boat days (Thousands of days)	594.6	1,042.8	99.6	7.7	37.4	24.3	22.1	2.8	1,831.3
Total trip spending (\$ per boat per year)	\$935.9	\$2,148.4	\$4,574.4	\$8,039.6	\$1,009.7	\$1,009.7	\$1,963.9	\$5,204.7	
Total trip spending (\$ Millions)	\$34.2	\$89.5	\$14.9	\$1.4	\$2.0	\$1.3	\$1.4	\$0.3	\$144.9
Total craft & trip spending (\$ Millions)	\$50.9	\$158.4	\$39.1	\$5.9	\$2.9	\$3.6	\$6.6	\$1.4	\$268.8

Table 2. Total Spending on Boat Trips by Power and Sailboat Owners Registered in the Michigan 4th CD

Category	Total (\$ Millions)	Percentage
Lodging	\$5.8	4%
Marina services	\$11.8	8%
Restaurant	\$26.6	18%
Groceries	\$26.2	18%
Boat fuel	\$33.0	23%
Auto fuel	\$27.0	19%
Repair & Maintenance	-	-
Marine supplies	-	-
Recreation & Entertainment	\$6.2	4%
Shopping	\$4.6	3%
Other services	-	-
Other goods	\$3.7	3%
Total	\$144.9	100%

Table 3. Total Annual Craft Spending (not including purchases of boats) by Power and Sailboat Owners Registered in the Michigan 4th CD

Category	Total (\$ Millions)	Percentage
Slip	\$17.6	14%
Loan Payments	\$38.3	31%
Replacement Motors	\$1.7	1%
Replacement Trailers	\$0.4	0%
Insurance	\$11.3	9%
Repairs	\$24.9	20%
Accessories	\$24.5	20%
Taxes	\$5.2	4%
Total	\$124.0	100%

Table 4. Economic Significance of Trip Spending and Annual Craft Spending by Power and Sailboats Registered in the Michigan 4th CD

	Trip Spending	Annual Craft Spending	Total
Direct Effects			
Sales (\$ Millions)	\$122.4	\$78.9	\$201.3
Jobs	1,281.2	909.3	2,190.5
Labor Income (\$ Millions)	\$36.8	\$30.5	\$67.3
Value Added (\$ Millions)	\$58.9	\$51.0	\$109.9
Total Effects			
Sales (\$ Millions)	\$328.9	\$200.1	\$529.0
Jobs	2,720.1	1,803.4	4,523.5
Labor Income (\$ Millions)	\$100.7	\$70.6	\$171.3
Value Added (\$ Millions)	\$169.9	\$117.8	\$287.8

Table 5. Economic Significance of Power and Sailboats Registered in the Michigan 4th CD

Sector/Spending category	Sales (\$ Millions)	Jobs	Labor Income (\$Millions)	Value Added (\$Millions)
Direct Effects				
Lodging	\$5.8	71.8	\$2.3	\$4.1
Marina Services	\$29.4	377.7	\$10.3	\$18.5
Restaurant	\$26.6	527.4	\$9.1	\$12.8
Recreation & Entertainment	\$6.2	79.4	\$2.2	\$3.9
Repair & Maintenance	\$24.9	310.7	\$9.2	\$12.9
Insurance & Credit	\$13.8	100.5	\$5.9	\$12.7
Gas Service	\$13.4	158.8	\$6.4	\$10.2
Other Retail Trade	\$19.8	371.6	\$9.7	\$15.6
Wholesale Trade	\$13.0	83.4	\$5.6	\$9.9
Other Local Production of Goods	\$48.4	109.2	\$6.7	\$9.3
Total Direct Effects	\$201.3	2,190.5	\$67.3	\$109.9
Secondary Effects	\$327.7	2,333.0	\$104.0	\$177.8
Total Effects	\$529.0	4,523.5	\$171.3	\$287.8

The Michigan 5th Congressional District

Table 1. The Michigan 5th Congressional District Description

Area (square miles)	1,754
Navigable Waterbody (square miles)	41
Total Population (2007)	668,874
Population Density (per square mile) (2007)	378
Persons 18+ (2007)	499,550
Number of Households (2007)	261,892

Table 2. Registered Boats Owned by Residents Residing in the Michigan 5th Congressional District

	5th CD	State Total
Number of Registered Boats	51,444	877,398
Type of Registered Boats		
Power Boats	43,934	733,531
Outboards	32,510	544,140
Inboards	1,320	25,465
Stern Drives	9,522	153,500
Jet Boats	582	10,426
Personal Watercraft	6,220	110,969
Sailboats	1,290	32,898
Size of Registered Boats		
≤ 15'	24,455	423,705
16'-24'	24,067	397,464
25'-39'	2,747	51,824
40' +	175	4,405
Per Capita Ownership of Registered Boats		
All Population	77/1000	87/1000
Persons 18 +	103/1000	118/1000
Households	196/1000	220/1000

Table 3. Boating-related Businesses Based on NAICS Codes

Category	5th CD	State Total
Boat Building		
No. of Businesses	5	39
No. of Employees	13	2,032
Total Sales (\$ Millions)	\$0.8	\$277.0
Motors & Engines Mfg.		
No. of Businesses	-	2
No. of Employees	-	5
Total Sales (\$ Millions)	-	\$0.3
Accessories & Supplies Mfg.		
No. of Businesses	2	38
No. of Employees	5	213
Total Sales (\$ Millions)	\$0.4	\$15.3
Dealers & Wholesalers		
No. of Businesses	20	437
No. of Employees	150	2,419
Total Sales (\$ Millions)	\$31.9	\$458.7
Boating Services		
No. of Businesses	16	453
No. of Employees	175	2,436
Total Sales (\$ Millions)	\$6.1	\$161.1

Figure 1. Location of the Michigan 5th Congressional District

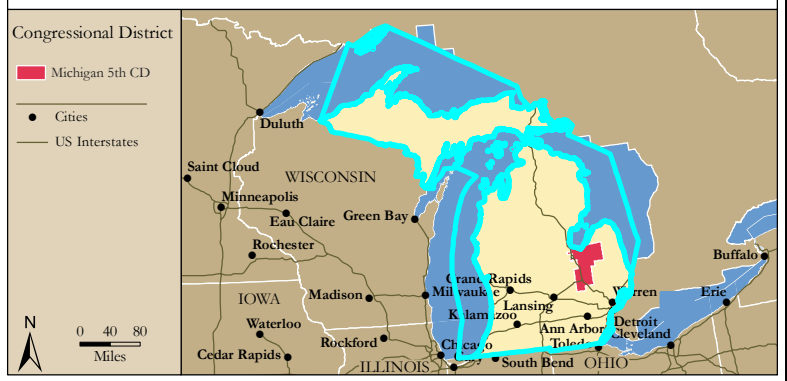


Figure 2. Navigable Waters of the Michigan 5th Congressional District

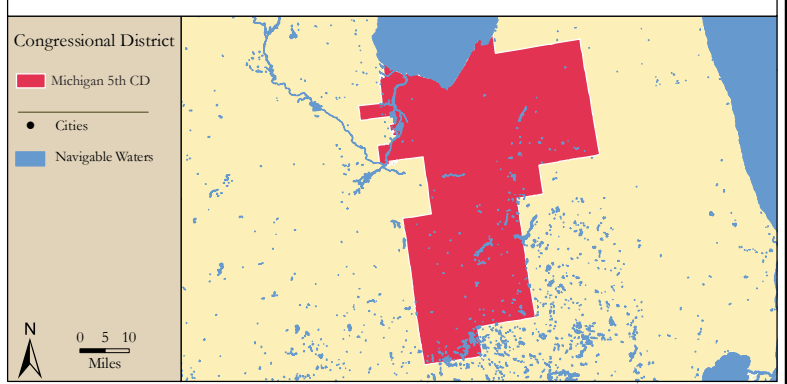


Figure 3. Number of Registered Boats by Zipcode within the Michigan 5th Congressional District

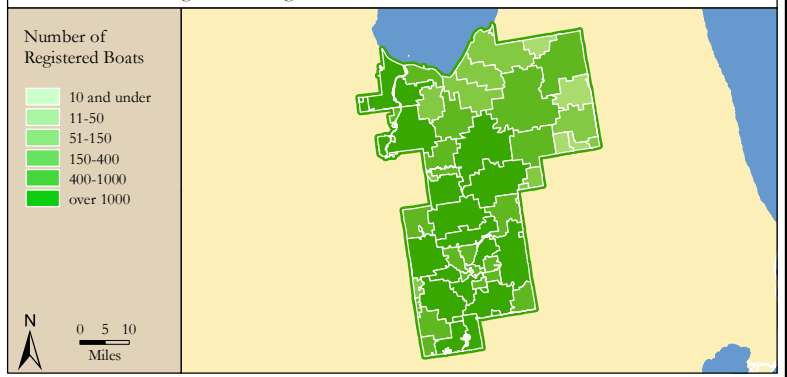
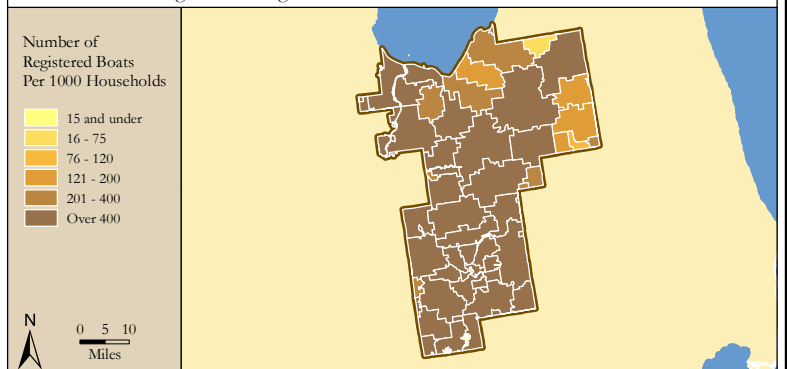


Figure 4. Per Capita (Household) Ownership of Registered Boats by Zipcode within the Michigan 5th Congressional District



Economic Significance of Boating

Table 1. Craft and Trip Expenses by Power and Sailboats Registered in the Michigan 5th Congressional District

Category	Boat Type and Size								Total
	Power <15'	Power 16' - 24'	Power 25' - 39'	Power 40'+	Sail <15'	Sail 16' - 24'	Sail 25' - 39'	Sail 40+	
Number of boats (Thousands of boats)	17.8	23.6	2.4	0.2	0.4	0.5	0.3	0.0	45.2
Annual craft spending (\$ per boat per year)	\$457.9	\$1,655.6	\$7,464.6	\$25,299.0	\$488.7	\$1,830.2	\$7,439.8	\$18,328.8	
Total craft spending (\$ Millions)	\$8.1	\$39.0	\$18.0	\$3.8	\$0.2	\$0.9	\$2.5	\$0.4	\$73.1
Total boat days (Thousands of days)	289.7	590.5	74.0	6.6	8.6	9.4	10.6	1.1	990.2
Total trip spending (\$ per boat per year)	\$935.9	\$2,148.4	\$4,574.4	\$8,039.6	\$1,009.7	\$1,009.7	\$1,963.9	\$5,204.7	
Total trip spending (\$ Millions)	\$16.6	\$50.7	\$11.0	\$1.2	\$0.4	\$0.5	\$0.7	\$0.1	\$81.3
Total craft & trip spending (\$ Millions)	\$24.8	\$89.7	\$29.0	\$5.0	\$0.7	\$1.4	\$3.2	\$0.6	\$154.3

Table 2. Total Spending on Boat Trips by Power and Sailboat Owners Registered in the Michigan 5th CD

Category	Total (\$ Millions)	Percentage
Lodging	\$3.2	4%
Marina services	\$6.7	8%
Restaurant	\$14.9	18%
Groceries	\$14.6	18%
Boat fuel	\$19.2	24%
Auto fuel	\$14.7	18%
Repair & Maintenance	-	-
Marine supplies	-	-
Recreation & Entertainment	\$3.4	4%
Shopping	\$2.5	3%
Other services	-	-
Other goods	\$2.0	2%
Total	\$81.3	100%

Table 3. Total Annual Craft Spending (not including purchases of boats) by Power and Sailboat Owners Registered in the Michigan 5th CD

Category	Total (\$ Millions)	Percentage
Slip	\$10.5	14%
Loan Payments	\$23.3	32%
Replacement Motors	\$0.9	1%
Replacement Trailers	\$0.2	0%
Insurance	\$6.6	9%
Repairs	\$14.6	20%
Accessories	\$14.0	19%
Taxes	\$3.0	4%
Total	\$73.1	100%

Table 4. Economic Significance of Trip Spending and Annual Craft Spending by Power and Sailboats Registered in the Michigan 5th CD

	Trip Spending	Annual Craft Spending	Total
Direct Effects			
Sales (\$ Millions)	\$68.9	\$46.0	\$114.9
Jobs	716.9	530.0	1,246.9
Labor Income (\$ Millions)	\$20.6	\$17.8	\$38.4
Value Added (\$ Millions)	\$33.0	\$29.7	\$62.8
Total Effects			
Sales (\$ Millions)	\$185.1	\$116.6	\$301.7
Jobs	1,525.0	1,051.0	2,576.0
Labor Income (\$ Millions)	\$56.5	\$41.1	\$97.7
Value Added (\$ Millions)	\$95.5	\$68.7	\$164.1

Table 5. Economic Significance of Power and Sailboats Registered in the Michigan 5th CD

Sector/Spending category	Sales (\$ Millions)	Jobs	Labor Income (\$Millions)	Value Added (\$Millions)
Direct Effects				
Lodging	\$3.2	39.4	\$1.3	\$2.3
Marina Services	\$17.2	220.7	\$6.0	\$10.8
Restaurant	\$14.9	295.2	\$5.1	\$7.2
Recreation & Entertainment	\$3.4	43.6	\$1.2	\$2.1
Repair & Maintenance	\$14.6	181.9	\$5.4	\$7.6
Insurance & Credit	\$8.1	58.7	\$3.5	\$7.4
Gas Service	\$7.6	89.9	\$3.6	\$5.8
Other Retail Trade	\$11.2	209.2	\$5.4	\$8.8
Wholesale Trade	\$7.3	47.1	\$3.2	\$5.6
Other Local Production of Goods	\$27.6	61.3	\$3.8	\$5.3
Total Direct Effects	\$114.9	1,246.9	\$38.4	\$62.8
Secondary Effects	\$186.8	1,329.2	\$59.3	\$101.4
Total Effects	\$301.7	2,576.0	\$97.7	\$164.1

The Michigan 6th Congressional District

Table 1. The Michigan 6th Congressional District Description

Area (square miles)	3,331
Navigable Waterbody (square miles)	142
Total Population (2007)	676,489
Population Density (per square mile) (2007)	198
Persons 18+ (2007)	512,661
Number of Households (2007)	266,460

Table 2. Registered Boats Owned by Residents Residing in the Michigan 6th Congressional District

	6th CD	State Total
Number of Registered Boats	71,420	877,398
Type of Registered Boats		
Power Boats	61,608	733,531
Outboards	50,081	544,140
Inboards	1,987	25,465
Stern Drives	8,932	153,500
Jet Boats	608	10,426
Personal Watercraft	7,179	110,969
Sailboats	2,633	32,898
Size of Registered Boats		
≤ 15'	37,386	423,705
16'-24'	31,161	397,464
25'-39'	2,663	51,824
40' +	210	4,405
Per Capita Ownership of Registered Boats		
All Population	106/1000	87/1000
Persons 18 +	139/1000	118/1000
Households	268/1000	220/1000

Table 3. Boating-related Businesses Based on NAICS Codes

Category	6th CD	State Total
Boat Building		
No. of Businesses	2	39
No. of Employees	4	2,032
Total Sales (\$ Millions)	\$0.4	\$277.0
Motors & Engines Mfg.		
No. of Businesses	1	2
No. of Employees	2	5
Total Sales (\$ Millions)	\$0.1	\$0.3
Accessories & Supplies Mfg.		
No. of Businesses	4	38
No. of Employees	12	213
Total Sales (\$ Millions)	\$0.9	\$15.3
Dealers & Wholesalers		
No. of Businesses	43	437
No. of Employees	283	2,419
Total Sales (\$ Millions)	\$58.2	\$458.7
Boating Services		
No. of Businesses	28	453
No. of Employees	137	2,436
Total Sales (\$ Millions)	\$9.8	\$161.1

Figure 1. Location of the Michigan 6th Congressional District



Figure 2. Navigable Waters of the Michigan 6th Congressional District

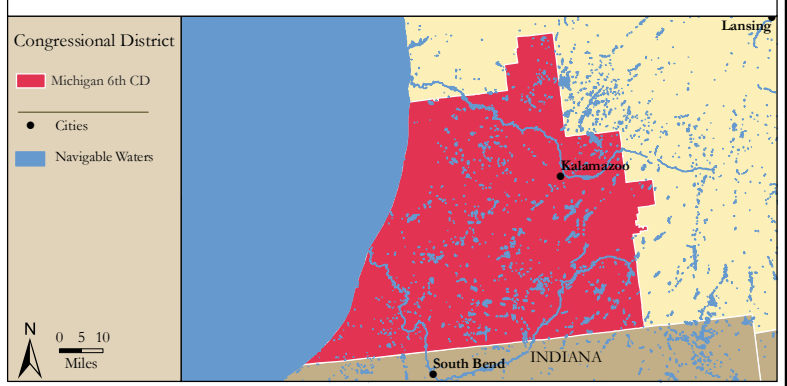


Figure 3. Number of Registered Boats by Zipcode within the Michigan 6th Congressional District

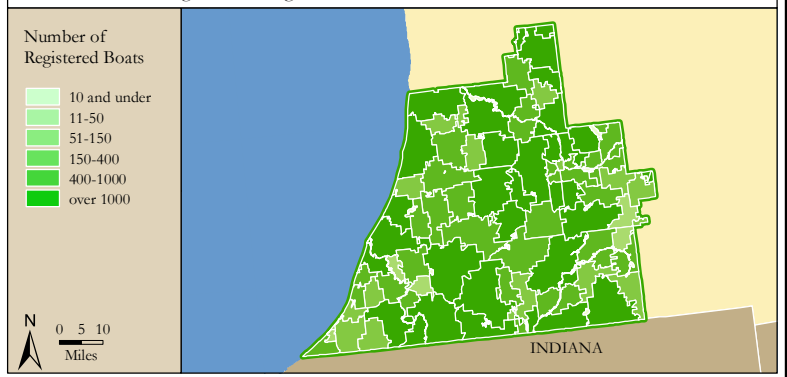
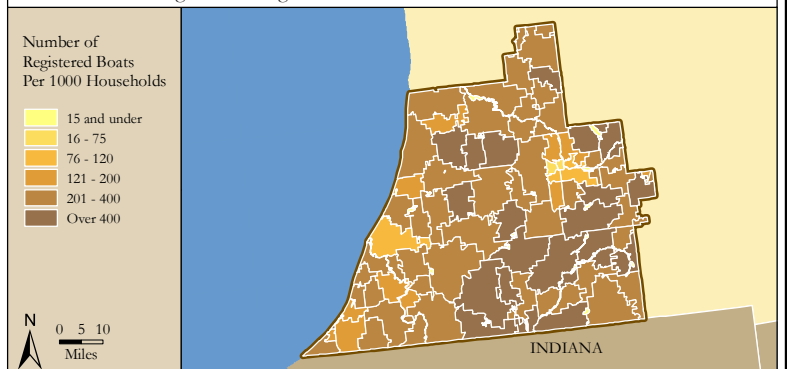


Figure 4. Per Capita (Household) Ownership of Registered Boats by Zipcode within the Michigan 6th Congressional District



Economic Significance of Boating

Table 1. Craft and Trip Expenses by Power and Sailboats Registered in the Michigan 6th Congressional District

Category	Boat Type and Size								Total
	Power <15'	Power 16' - 24'	Power 25' - 39'	Power 40'+	Sail <15'	Sail 16' - 24'	Sail 25' - 39'	Sail 40+	
Number of boats (Thousands of boats)	29.0	30.2	2.2	0.2	1.2	1.0	0.4	0.0	64.2
Annual craft spending (\$ per boat per year)	\$457.9	\$1,655.6	\$7,464.6	\$25,299.0	\$488.7	\$1,830.2	\$7,439.8	\$18,328.8	
Total craft spending (\$ Millions)	\$13.3	\$50.0	\$16.6	\$4.3	\$0.6	\$1.8	\$3.3	\$0.7	\$90.5
Total boat days (Thousands of days)	472.8	755.5	68.3	7.4	22.6	19.1	13.7	1.8	1,361.2
Total trip spending (\$ per boat per year)	\$935.9	\$2,148.4	\$4,574.4	\$8,039.6	\$1,009.7	\$1,009.7	\$1,963.9	\$5,204.7	
Total trip spending (\$ Millions)	\$27.2	\$64.8	\$10.2	\$1.4	\$1.2	\$1.0	\$0.9	\$0.2	\$106.8
Total craft & trip spending (\$ Millions)	\$40.5	\$114.8	\$26.8	\$5.7	\$1.8	\$2.8	\$4.1	\$0.9	\$197.3

Table 2. Total Spending on Boat Trips by Power and Sailboat Owners Registered in the Michigan 6th CD

Category	Total (\$ Millions)	Percentage
Lodging	\$4.2	4%
Marina services	\$8.7	8%
Restaurant	\$19.6	18%
Groceries	\$19.3	18%
Boat fuel	\$24.2	23%
Auto fuel	\$20.0	19%
Repair & Maintenance	-	-
Marine supplies	-	-
Recreation & Entertainment	\$4.6	4%
Shopping	\$3.4	3%
Other services	-	-
Other goods	\$2.7	3%
Total	\$106.8	100%

Table 3. Total Annual Craft Spending (not including purchases of boats) by Power and Sailboat Owners Registered in the Michigan 6th CD

Category	Total (\$ Millions)	Percentage
Slip	\$12.7	14%
Loan Payments	\$27.9	31%
Replacement Motors	\$1.3	1%
Replacement Trailers	\$0.3	0%
Insurance	\$8.3	9%
Repairs	\$18.2	20%
Accessories	\$18.0	20%
Taxes	\$3.8	4%
Total	\$90.5	100%

Table 4. Economic Significance of Trip Spending and Annual Craft Spending by Power and Sailboats Registered in the Michigan 6th CD

	Trip Spending	Annual Craft Spending	Total
Direct Effects			
Sales (\$ Millions)	\$90.1	\$57.7	\$147.8
Jobs	944.2	664.1	1,608.3
Labor Income (\$ Millions)	\$27.1	\$22.3	\$49.4
Value Added (\$ Millions)	\$43.4	\$37.3	\$80.7
Total Effects			
Sales (\$ Millions)	\$242.3	\$146.2	\$388.5
Jobs	2,004.4	1,317.2	3,321.6
Labor Income (\$ Millions)	\$74.2	\$51.6	\$125.8
Value Added (\$ Millions)	\$125.2	\$86.1	\$211.3

Table 5. Economic Significance of Power and Sailboats Registered in the Michigan 6th CD

Sector/Spending category	Sales (\$ Millions)	Jobs	Labor Income (\$Millions)	Value Added (\$Millions)
Direct Effects				
Lodging	\$4.2	52.7	\$1.7	\$3.0
Marina Services	\$21.4	275.6	\$7.5	\$13.5
Restaurant	\$19.6	387.7	\$6.7	\$9.4
Recreation & Entertainment	\$4.6	59.1	\$1.6	\$2.9
Repair & Maintenance	\$18.2	227.1	\$6.7	\$9.5
Insurance & Credit	\$10.1	73.7	\$4.4	\$9.3
Gas Service	\$9.9	117.1	\$4.7	\$7.5
Other Retail Trade	\$14.6	273.5	\$7.1	\$11.5
Wholesale Trade	\$9.6	61.4	\$4.1	\$7.3
Other Local Production of Goods	\$35.6	80.4	\$4.9	\$6.9
Total Direct Effects	\$147.8	1,608.3	\$49.4	\$80.7
Secondary Effects	\$240.7	1,713.3	\$76.4	\$130.6
Total Effects	\$388.5	3,321.6	\$125.8	\$211.3

The Michigan 7th Congressional District

Table 1. The Michigan 7th Congressional District Description

Area (square miles)	4,295
Navigable Waterbody (square miles)	150
Total Population (2007)	691,115
Population Density (per square mile) (2007)	158
Persons 18+ (2007)	526,715
Number of Households (2007)	260,262

Table 2. Registered Boats Owned by Residents Residing in the Michigan 7th Congressional District

	7th CD	State Total
Number of Registered Boats	70,605	877,398
Type of Registered Boats		
Power Boats	60,469	733,531
Outboards	49,048	544,140
Inboards	1,671	25,465
Stern Drives	9,146	153,500
Jet Boats	604	10,426
Personal Watercraft	8,112	110,969
Sailboats	2,024	32,898
Size of Registered Boats		
≤ 15'	35,542	423,705
16'-24'	32,784	397,464
25'-39'	2,146	51,824
40' +	133	4,405
Per Capita Ownership of Registered Boats		
All Population	102/1000	87/1000
Persons 18 +	134/1000	118/1000
Households	271/1000	220/1000

Table 3. Boating-related Businesses Based on NAICS Codes

Category	7th CD	State Total
Boat Building		
No. of Businesses	3	39
No. of Employees	76	2,032
Total Sales (\$ Millions)	\$24.6	\$277.0
Motors & Engines Mfg.		
No. of Businesses	-	2
No. of Employees	-	5
Total Sales (\$ Millions)	-	\$0.3
Accessories & Supplies Mfg.		
No. of Businesses	5	38
No. of Employees	53	213
Total Sales (\$ Millions)	\$4.0	\$15.3
Dealers & Wholesalers		
No. of Businesses	30	437
No. of Employees	185	2,419
Total Sales (\$ Millions)	\$25.5	\$458.7
Boating Services		
No. of Businesses	10	453
No. of Employees	53	2,436
Total Sales (\$ Millions)	\$1.6	\$161.1

Figure 1. Location of the Michigan 7th Congressional District



Figure 2. Navigable Waters of the Michigan 7th Congressional District

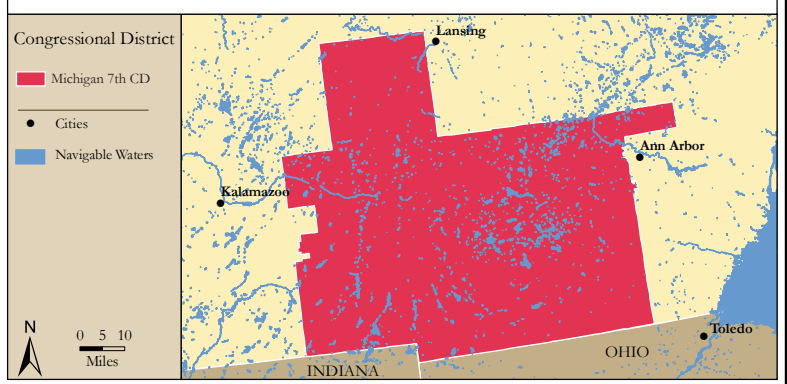


Figure 3. Number of Registered Boats by Zipcode within the Michigan 7th Congressional District

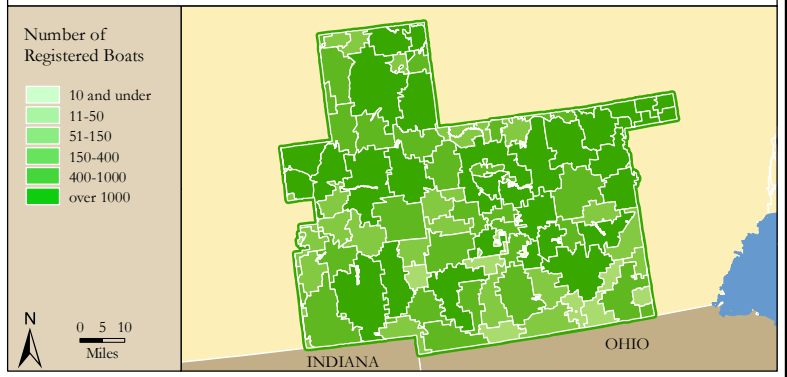
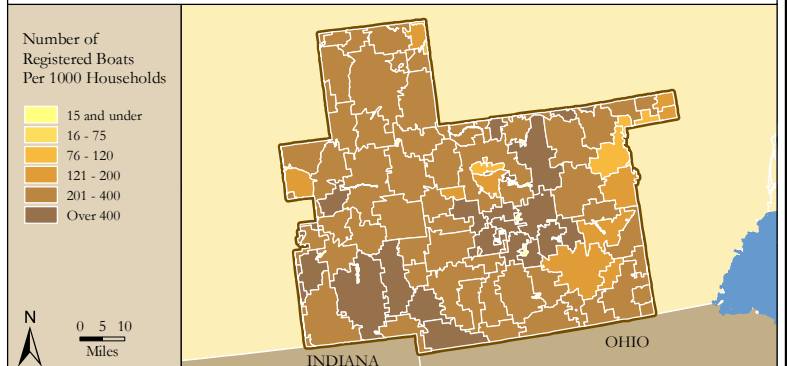


Figure 4. Per Capita (Household) Ownership of Registered Boats by Zipcode within the Michigan 7th Congressional District



Economic Significance of Boating

Table 1. Craft and Trip Expenses by Power and Sailboats Registered in the Michigan 7th Congressional District

Category	Boat Type and Size								Total
	Power <15'	Power 16' - 24'	Power 25' - 39'	Power 40'+	Sail <15'	Sail 16' - 24'	Sail 25' - 39'	Sail 40+	
Number of boats (Thousands of boats)	26.4	32.0	1.9	0.1	1.0	0.8	0.2	0.0	62.5
Annual craft spending (\$ per boat per year)	\$457.9	\$1,655.6	\$7,464.6	\$25,299.0	\$488.7	\$1,830.2	\$7,439.8	\$18,328.8	
Total craft spending (\$ Millions)	\$12.1	\$53.0	\$14.3	\$2.7	\$0.5	\$1.4	\$1.7	\$0.5	\$86.2
Total boat days (Thousands of days)	430.5	801.4	58.8	4.6	19.1	15.0	7.2	1.2	1,337.9
Total trip spending (\$ per boat per year)	\$935.9	\$2,148.4	\$4,574.4	\$8,039.6	\$1,009.7	\$1,009.7	\$1,963.9	\$5,204.7	
Total trip spending (\$ Millions)	\$24.7	\$68.8	\$8.8	\$0.9	\$1.0	\$0.8	\$0.5	\$0.1	\$105.5
Total craft & trip spending (\$ Millions)	\$36.9	\$121.8	\$23.1	\$3.5	\$1.5	\$2.2	\$2.2	\$0.6	\$191.7

Table 2. Total Spending on Boat Trips by Power and Sailboat Owners Registered in the Michigan 7th CD

Category	Total (\$ Millions)	Percentage
Lodging	\$4.3	4%
Marina services	\$8.4	8%
Restaurant	\$19.2	18%
Groceries	\$19.2	18%
Boat fuel	\$23.9	23%
Auto fuel	\$20.0	19%
Repair & Maintenance	-	-
Marine supplies	-	-
Recreation & Entertainment	\$4.5	4%
Shopping	\$3.3	3%
Other services	-	-
Other goods	\$2.7	3%
Total	\$105.5	100%

Table 3. Total Annual Craft Spending (not including purchases of boats) by Power and Sailboat Owners Registered in the Michigan 7th CD

Category	Total (\$ Millions)	Percentage
Slip	\$11.7	14%
Loan Payments	\$26.8	31%
Replacement Motors	\$1.3	1%
Replacement Trailers	\$0.3	0%
Insurance	\$8.0	9%
Repairs	\$17.3	20%
Accessories	\$17.2	20%
Taxes	\$3.6	4%
Total	\$86.2	100%

Table 4. Economic Significance of Trip Spending and Annual Craft Spending by Power and Sailboats Registered in the Michigan 7th CD

	Trip Spending	Annual Craft Spending	Total
Direct Effects			
Sales (\$ Millions)	\$88.9	\$54.6	\$143.5
Jobs	929.0	627.6	1,556.5
Labor Income (\$ Millions)	\$26.7	\$21.1	\$47.9
Value Added (\$ Millions)	\$42.8	\$35.3	\$78.2
Total Effects			
Sales (\$ Millions)	\$238.8	\$138.4	\$377.2
Jobs	1,974.0	1,245.5	3,219.4
Labor Income (\$ Millions)	\$73.1	\$48.9	\$122.0
Value Added (\$ Millions)	\$123.5	\$81.5	\$205.0

Table 5. Economic Significance of Power and Sailboats Registered in the Michigan 7th CD

Sector/Spending category	Sales (\$ Millions)	Jobs	Labor Income (\$Millions)	Value Added (\$Millions)
Direct Effects				
Lodging	\$4.3	53.5	\$1.7	\$3.1
Marina Services	\$20.1	258.0	\$7.0	\$12.7
Restaurant	\$19.2	380.1	\$6.5	\$9.2
Recreation & Entertainment	\$4.5	58.0	\$1.6	\$2.8
Repair & Maintenance	\$17.3	215.6	\$6.4	\$9.0
Insurance & Credit	\$9.7	70.8	\$4.2	\$8.9
Gas Service	\$9.8	116.3	\$4.7	\$7.4
Other Retail Trade	\$14.2	265.3	\$6.9	\$11.1
Wholesale Trade	\$9.4	60.2	\$4.0	\$7.1
Other Local Production of Goods	\$35.0	78.7	\$4.8	\$6.8
Total Direct Effects	\$143.5	1,556.5	\$47.9	\$78.2
Secondary Effects	\$233.8	1,662.9	\$74.1	\$126.8
Total Effects	\$377.2	3,219.4	\$122.0	\$205.0

The Michigan 8th Congressional District

Table 1. The Michigan 8th Congressional District Description

Area (square miles)	2,254
Navigable Waterbody (square miles)	73
Total Population (2007)	715,822
Population Density (per square mile) (2007)	313
Persons 18+ (2007)	542,140
Number of Households (2007)	269,205

Table 2. Registered Boats Owned by Residents Residing in the Michigan 8th Congressional District

	8th CD	State Total
Number of Registered Boats	70,308	877,398
Type of Registered Boats		
Power Boats	57,605	733,531
Outboards	41,860	544,140
Inboards	2,577	25,465
Stern Drives	12,132	153,500
Jet Boats	1,036	10,426
Personal Watercraft	10,183	110,969
Sailboats	2,520	32,898
Size of Registered Boats		
≤ 15'	32,457	423,705
16'-24'	34,308	397,464
25'-39'	3,304	51,824
40' +	239	4,405
Per Capita Ownership of Registered Boats		
All Population	98/1000	87/1000
Persons 18 +	130/1000	118/1000
Households	261/1000	220/1000

Table 3. Boating-related Businesses Based on NAICS Codes

Category	8th CD	State Total
Boat Building		
No. of Businesses	2	39
No. of Employees	3	2,032
Total Sales (\$ Millions)	\$0.1	\$277.0
Motors & Engines Mfg.		
No. of Businesses	-	2
No. of Employees	-	5
Total Sales (\$ Millions)	-	\$0.3
Accessories & Supplies Mfg.		
No. of Businesses	1	38
No. of Employees	1	213
Total Sales (\$ Millions)	\$0.1	\$15.3
Dealers & Wholesalers		
No. of Businesses	12	437
No. of Employees	116	2,419
Total Sales (\$ Millions)	\$18.1	\$458.7
Boating Services		
No. of Businesses	4	453
No. of Employees	58	2,436
Total Sales (\$ Millions)	\$1.9	\$161.1

Figure 1. Location of the Michigan 8th Congressional District



Figure 2. Navigable Waters of the Michigan 8th Congressional District

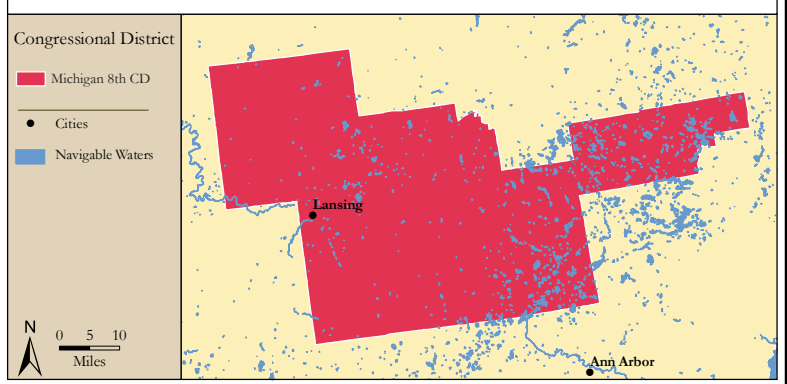


Figure 3. Number of Registered Boats by Zipcode within the Michigan 8th Congressional District

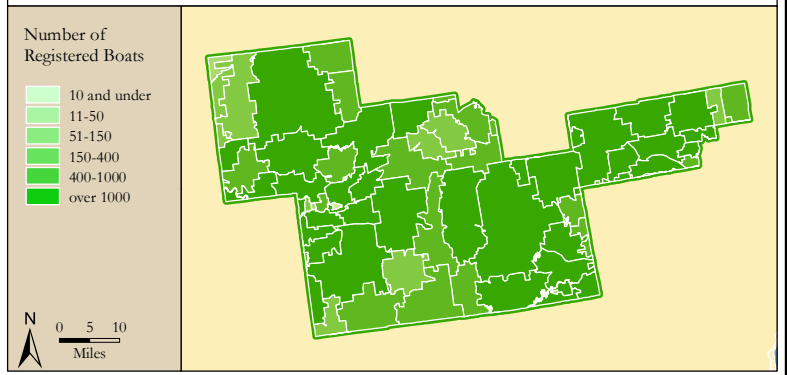
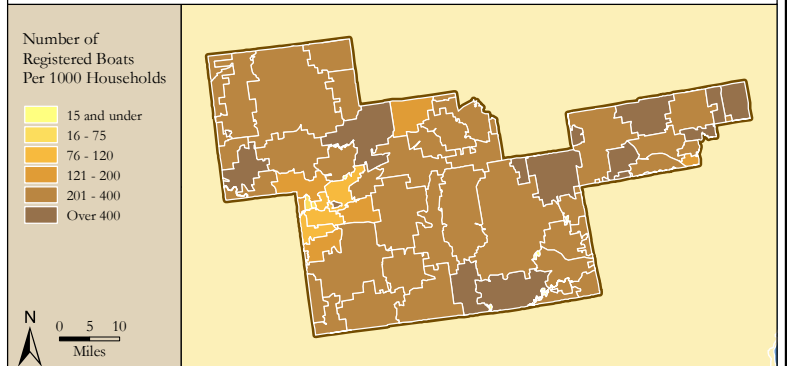


Figure 4. Per Capita (Household) Ownership of Registered Boats by Zipcode within the Michigan 8th Congressional District



Economic Significance of Boating

Table 1. Craft and Trip Expenses by Power and Sailboats Registered in the Michigan 8th Congressional District

Category	Boat Type and Size								Total
	Power <15'	Power 16' - 24'	Power 25' - 39'	Power 40'+	Sail <15'	Sail 16' - 24'	Sail 25' - 39'	Sail 40+	
Number of boats (Thousands of boats)	21.2	33.3	2.9	0.2	1.1	1.0	0.4	0.0	60.1
Annual craft spending (\$ per boat per year)	\$457.9	\$1,655.6	\$7,464.6	\$25,299.0	\$488.7	\$1,830.2	\$7,439.8	\$18,328.8	
Total craft spending (\$ Millions)	\$9.7	\$55.2	\$21.8	\$5.1	\$0.5	\$1.8	\$2.9	\$0.7	\$97.7
Total boat days (Thousands of days)	344.4	834.7	89.4	8.8	21.6	18.8	12.2	1.6	1,331.6
Total trip spending (\$ per boat per year)	\$935.9	\$2,148.4	\$4,574.4	\$8,039.6	\$1,009.7	\$1,009.7	\$1,963.9	\$5,204.7	
Total trip spending (\$ Millions)	\$19.8	\$71.6	\$13.3	\$1.6	\$1.1	\$1.0	\$0.8	\$0.2	\$109.4
Total craft & trip spending (\$ Millions)	\$29.5	\$126.8	\$35.1	\$6.8	\$1.7	\$2.8	\$3.7	\$0.8	\$207.1

Table 2. Total Spending on Boat Trips by Power and Sailboat Owners Registered in the Michigan 8th CD

Category	Total (\$ Millions)	Percentage
Lodging	\$4.4	4%
Marina services	\$8.9	8%
Restaurant	\$20.1	18%
Groceries	\$19.9	18%
Boat fuel	\$25.7	23%
Auto fuel	\$19.9	18%
Repair & Maintenance	-	-
Marine supplies	-	-
Recreation & Entertainment	\$4.5	4%
Shopping	\$3.4	3%
Other services	-	-
Other goods	\$2.8	3%
Total	\$109.4	100%

Table 3. Total Annual Craft Spending (not including purchases of boats) by Power and Sailboat Owners Registered in the Michigan 8th CD

Category	Total (\$ Millions)	Percentage
Slip	\$13.9	14%
Loan Payments	\$31.1	32%
Replacement Motors	\$1.3	1%
Replacement Trailers	\$0.3	0%
Insurance	\$8.8	9%
Repairs	\$19.4	20%
Accessories	\$18.8	19%
Taxes	\$4.0	4%
Total	\$97.7	100%

Table 4. Economic Significance of Trip Spending and Annual Craft Spending by Power and Sailboats Registered in the Michigan 8th CD

	Trip Spending	Annual Craft Spending	Total
Direct Effects			
Sales (\$ Millions)	\$92.7	\$61.5	\$154.2
Jobs	965.5	708.0	1,673.5
Labor Income (\$ Millions)	\$27.8	\$23.7	\$51.5
Value Added (\$ Millions)	\$44.5	\$39.7	\$84.2
Total Effects			
Sales (\$ Millions)	\$249.1	\$155.8	\$404.9
Jobs	2,053.5	1,404.1	3,457.6
Labor Income (\$ Millions)	\$76.1	\$55.0	\$131.1
Value Added (\$ Millions)	\$128.5	\$91.7	\$220.3

Table 5. Economic Significance of Power and Sailboats Registered in the Michigan 8th CD

Sector/Spending category	Sales (\$ Millions)	Jobs	Labor Income (\$Millions)	Value Added (\$Millions)
Direct Effects				
Lodging	\$4.4	54.3	\$1.7	\$3.1
Marina Services	\$22.8	293.0	\$8.0	\$14.4
Restaurant	\$20.1	398.4	\$6.8	\$9.7
Recreation & Entertainment	\$4.5	58.2	\$1.6	\$2.9
Repair & Maintenance	\$19.4	242.6	\$7.2	\$10.1
Insurance & Credit	\$10.9	78.7	\$4.7	\$9.9
Gas Service	\$10.2	120.8	\$4.9	\$7.7
Other Retail Trade	\$15.0	281.6	\$7.3	\$11.8
Wholesale Trade	\$9.9	63.3	\$4.2	\$7.5
Other Local Production of Goods	\$37.0	82.6	\$5.1	\$7.1
Total Direct Effects	\$154.2	1,673.5	\$51.5	\$84.2
Secondary Effects	\$250.7	1,784.1	\$79.6	\$136.1
Total Effects	\$404.9	3,457.6	\$131.1	\$220.3

The Michigan 9th Congressional District

Table 1. The Michigan 9th Congressional District Description

Area (square miles)	311
Navigable Waterbody (square miles)	14
Total Population (2007)	669,415
Population Density (per square mile) (2007)	2,071
Persons 18+ (2007)	515,804
Number of Households (2007)	268,572

Table 2. Registered Boats Owned by Residents Residing in the Michigan 9th Congressional District

	9th CD	State Total
Number of Registered Boats	44,141	877,398
Type of Registered Boats		
Power Boats	32,984	733,531
Outboards	19,689	544,140
Inboards	2,940	25,465
Stern Drives	9,535	153,500
Jet Boats	820	10,426
Personal Watercraft	8,173	110,969
Sailboats	2,984	32,898
Size of Registered Boats		
≤ 15'	18,506	423,705
16'-24'	21,379	397,464
25'-39'	3,690	51,824
40' +	566	4,405
Per Capita Ownership of Registered Boats		
All Population	66/1000	87/1000
Persons 18 +	86/1000	118/1000
Households	164/1000	220/1000

Table 3. Boating-related Businesses Based on NAICS Codes

Category	9th CD	State Total
Boat Building		
No. of Businesses	1	39
No. of Employees	4	2,032
Total Sales (\$ Millions)	\$0.2	\$277.0
Motors & Engines Mfg.		
No. of Businesses	-	2
No. of Employees	-	5
Total Sales (\$ Millions)	-	\$0.3
Accessories & Supplies Mfg.		
No. of Businesses	-	38
No. of Employees	-	213
Total Sales (\$ Millions)	-	\$15.3
Dealers & Wholesalers		
No. of Businesses	21	437
No. of Employees	108	2,419
Total Sales (\$ Millions)	\$21.4	\$458.7
Boating Services		
No. of Businesses	12	453
No. of Employees	32	2,436
Total Sales (\$ Millions)	\$1.8	\$161.1

Figure 1. Location of the Michigan 9th Congressional District



Figure 2. Navigable Waters of the Michigan 9th Congressional District

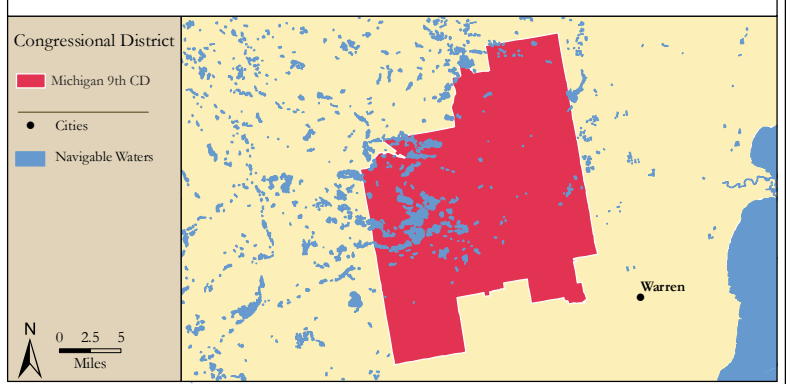


Figure 3. Number of Registered Boats by Zipcode within the Michigan 9th Congressional District

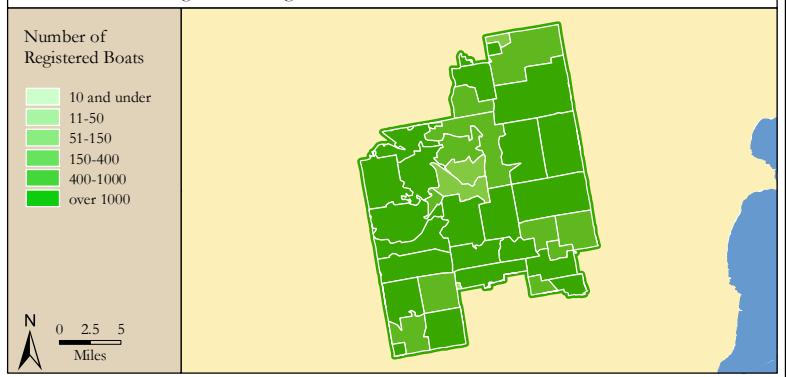
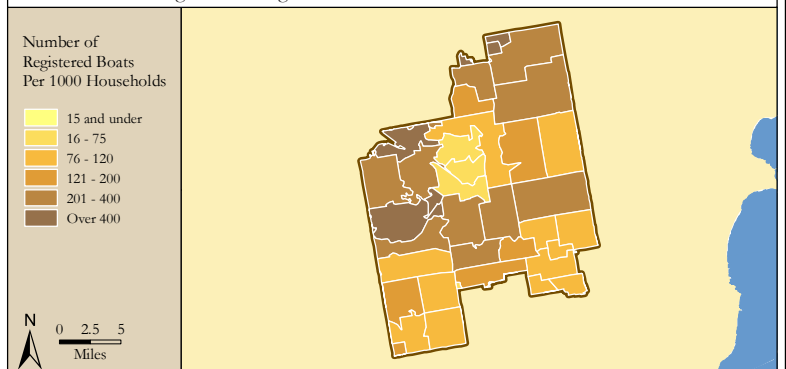


Figure 4. Per Capita (Household) Ownership of Registered Boats by Zipcode within the Michigan 9th Congressional District



Economic Significance of Boating

Table 1. Craft and Trip Expenses by Power and Sailboats Registered in the Michigan 9th Congressional District

Category	Boat Type and Size								Total
	Power <15'	Power 16' - 24'	Power 25' - 39'	Power 40'+	Sail <15'	Sail 16' - 24'	Sail 25' - 39'	Sail 40+	
Number of boats (Thousands of boats)	9.1	20.4	3.1	0.4	1.2	1.0	0.6	0.1	36.0
Annual craft spending (\$ per boat per year)	\$457.9	\$1,655.6	\$7,464.6	\$25,299.0	\$488.7	\$1,830.2	\$7,439.8	\$18,328.8	
Total craft spending (\$ Millions)	\$4.2	\$33.8	\$22.8	\$11.2	\$0.6	\$1.8	\$4.7	\$2.3	\$81.3
Total boat days (Thousands of days)	147.9	510.7	93.9	19.3	24.1	19.0	19.8	5.6	840.2
Total trip spending (\$ per boat per year)	\$935.9	\$2,148.4	\$4,574.4	\$8,039.6	\$1,009.7	\$1,009.7	\$1,963.9	\$5,204.7	
Total trip spending (\$ Millions)	\$8.5	\$43.8	\$14.0	\$3.6	\$1.3	\$1.0	\$1.2	\$0.6	\$74.0
Total craft & trip spending (\$ Millions)	\$12.7	\$77.6	\$36.8	\$14.8	\$1.9	\$2.8	\$5.9	\$2.9	\$155.3

Table 2. Total Spending on Boat Trips by Power and Sailboat Owners Registered in the Michigan 9th CD

Category	Total (\$ Millions)	Percentage
Lodging	\$2.7	4%
Marina services	\$6.5	9%
Restaurant	\$14.0	19%
Groceries	\$13.3	18%
Boat fuel	\$18.3	25%
Auto fuel	\$12.2	16%
Repair & Maintenance	-	-
Marine supplies	-	-
Recreation & Entertainment	\$2.9	4%
Shopping	\$2.2	3%
Other services	-	-
Other goods	\$1.8	2%
Total	\$74.0	100%

Table 3. Total Annual Craft Spending (not including purchases of boats) by Power and Sailboat Owners Registered in the Michigan 9th CD

Category	Total (\$ Millions)	Percentage
Slip	\$12.8	16%
Loan Payments	\$26.4	32%
Replacement Motors	\$0.8	1%
Replacement Trailers	\$0.2	0%
Insurance	\$7.1	9%
Repairs	\$16.1	20%
Accessories	\$14.7	18%
Taxes	\$3.2	4%
Total	\$81.3	100%

Table 4. Economic Significance of Trip Spending and Annual Craft Spending by Power and Sailboats Registered in the Michigan 9th CD

	Trip Spending	Annual Craft Spending	Total
Direct Effects			
Sales (\$ Millions)	\$63.5	\$51.0	\$114.6
Jobs	660.8	591.0	1,251.8
Labor Income (\$ Millions)	\$18.9	\$19.7	\$38.5
Value Added (\$ Millions)	\$30.2	\$33.0	\$63.2
Total Effects			
Sales (\$ Millions)	\$170.7	\$129.4	\$300.1
Jobs	1,404.8	1,170.0	2,574.8
Labor Income (\$ Millions)	\$52.0	\$45.6	\$97.6
Value Added (\$ Millions)	\$87.8	\$76.2	\$164.0

Table 5. Economic Significance of Power and Sailboats Registered in the Michigan 9th CD

Sector/Spending category	Sales (\$ Millions)	Jobs	Labor Income (\$Millions)	Value Added (\$Millions)
Direct Effects				
Lodging	\$2.7	33.7	\$1.1	\$1.9
Marina Services	\$19.3	247.9	\$6.8	\$12.2
Restaurant	\$14.0	278.3	\$4.8	\$6.7
Recreation & Entertainment	\$2.9	37.7	\$1.0	\$1.8
Repair & Maintenance	\$16.1	200.9	\$6.0	\$8.4
Insurance & Credit	\$8.8	63.5	\$3.8	\$8.0
Gas Service	\$6.8	80.6	\$3.3	\$5.2
Other Retail Trade	\$10.9	206.1	\$5.3	\$8.6
Wholesale Trade	\$7.0	44.6	\$3.0	\$5.3
Other Local Production of Goods	\$26.1	58.5	\$3.6	\$5.0
Total Direct Effects	\$114.6	1,251.8	\$38.5	\$63.2
Secondary Effects	\$185.5	1,323.0	\$59.1	\$100.8
Total Effects	\$300.1	2,574.8	\$97.6	\$164.0

The Michigan 10th Congressional District

Table 1. The Michigan 10th Congressional District Description

Area (square miles)	3,549
Navigable Waterbody (square miles)	110
Total Population (2007)	722,203
Population Density (per square mile) (2007)	202
Persons 18+ (2007)	547,413
Number of Households (2007)	274,008

Table 2. Registered Boats Owned by Residents Residing in the Michigan 10th Congressional District

	10th CD	State Total
Number of Registered Boats	65,140	877,398
Type of Registered Boats		
Power Boats	52,313	733,531
Outboards	32,394	544,140
Inboards	2,070	25,465
Stern Drives	16,407	153,500
Jet Boats	1,442	10,426
Personal Watercraft	11,216	110,969
Sailboats	1,611	32,898
Size of Registered Boats		
≤ 15'	28,788	423,705
16'-24'	28,386	397,464
25'-39'	7,394	51,824
40' +	572	4,405
Per Capita Ownership of Registered Boats		
All Population	90/1000	87/1000
Persons 18 +	119/1000	118/1000
Households	238/1000	220/1000

Table 3. Boating-related Businesses Based on NAICS Codes

Category	10th CD	State Total
Boat Building		
No. of Businesses	3	39
No. of Employees	48	2,032
Total Sales (\$ Millions)	\$7.2	\$277.0
Motors & Engines Mfg.		
No. of Businesses	-	2
No. of Employees	-	5
Total Sales (\$ Millions)	-	\$0.3
Accessories & Supplies Mfg.		
No. of Businesses	2	38
No. of Employees	4	213
Total Sales (\$ Millions)	\$0.2	\$15.3
Dealers & Wholesalers		
No. of Businesses	50	437
No. of Employees	276	2,419
Total Sales (\$ Millions)	\$58.4	\$458.7
Boating Services		
No. of Businesses	85	453
No. of Employees	287	2,436
Total Sales (\$ Millions)	\$18.8	\$161.1

Figure 1. Location of the Michigan 10th Congressional District



Figure 2. Navigable Waters of the Michigan 10th Congressional District

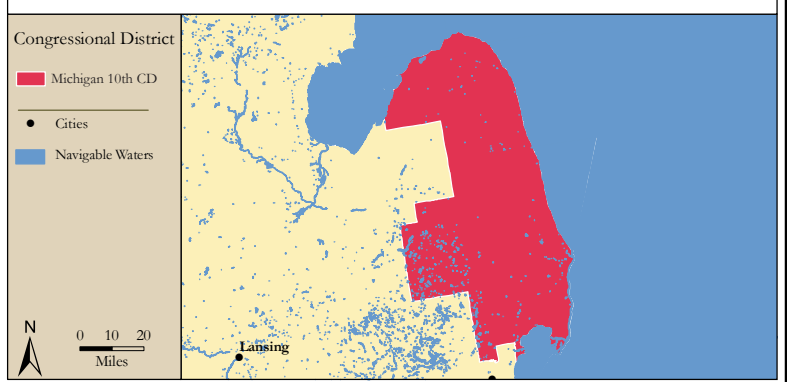


Figure 3. Number of Registered Boats by Zipcode within the Michigan 10th Congressional District

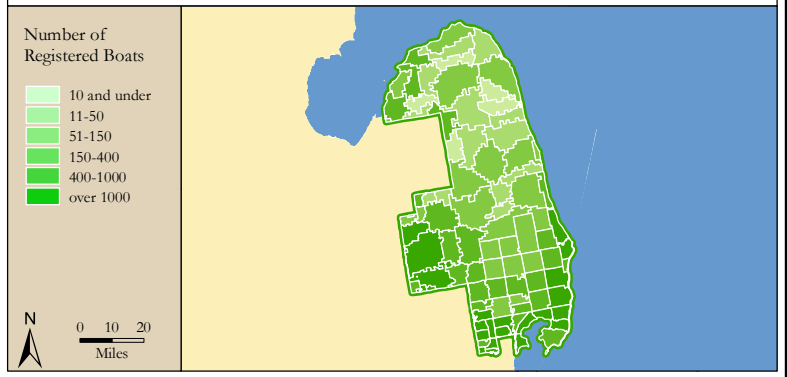
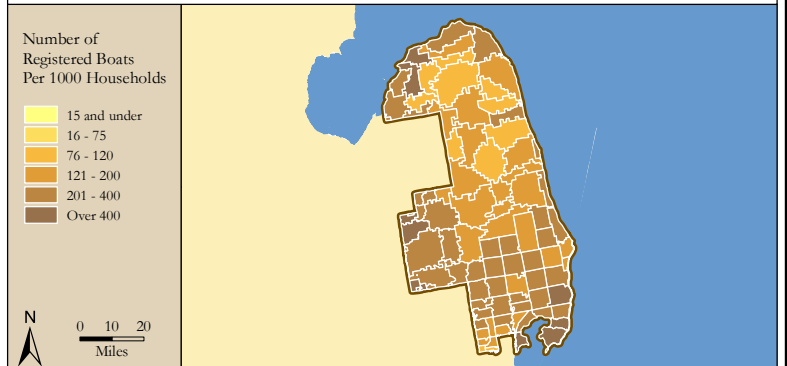


Figure 4. Per Capita (Household) Ownership of Registered Boats by Zipcode within the Michigan 10th Congressional District



Economic Significance of Boating

Table 1. Craft and Trip Expenses by Power and Sailboats Registered in the Michigan 10th Congressional District

Category	Boat Type and Size								Total
	Power <15'	Power 16' - 24'	Power 25' - 39'	Power 40'+	Sail <15'	Sail 16' - 24'	Sail 25' - 39'	Sail 40+	
Number of boats (Thousands of boats)	17.1	27.8	6.8	0.5	0.4	0.6	0.6	0.1	53.9
Annual craft spending (\$ per boat per year)	\$457.9	\$1,655.6	\$7,464.6	\$25,299.0	\$488.7	\$1,830.2	\$7,439.8	\$18,328.8	
Total craft spending (\$ Millions)	\$7.9	\$46.1	\$51.0	\$13.1	\$0.2	\$1.0	\$4.2	\$1.0	\$124.4
Total boat days (Thousands of days)	279.1	696.6	209.6	22.5	8.3	11.0	17.6	2.5	1,247.1
Total trip spending (\$ per boat per year)	\$935.9	\$2,148.4	\$4,574.4	\$8,039.6	\$1,009.7	\$1,009.7	\$1,963.9	\$5,204.7	
Total trip spending (\$ Millions)	\$16.0	\$59.8	\$31.3	\$4.2	\$0.4	\$0.6	\$1.1	\$0.3	\$113.6
Total craft & trip spending (\$ Millions)	\$23.9	\$105.8	\$82.3	\$17.3	\$0.6	\$1.6	\$5.3	\$1.3	\$238.0

Table 2. Total Spending on Boat Trips by Power and Sailboat Owners Registered in the Michigan 10th CD

Category	Total (\$ Millions)	Percentage
Lodging	\$3.9	3%
Marina services	\$10.2	9%
Restaurant	\$21.4	19%
Groceries	\$19.9	18%
Boat fuel	\$29.8	26%
Auto fuel	\$17.9	16%
Repair & Maintenance	-	-
Marine supplies	-	-
Recreation & Entertainment	\$4.5	4%
Shopping	\$3.4	3%
Other services	-	-
Other goods	\$2.7	2%
Total	\$113.6	100%

Table 3. Total Annual Craft Spending (not including purchases of boats) by Power and Sailboat Owners Registered in the Michigan 10th CD

Category	Total (\$ Millions)	Percentage
Slip	\$19.3	16%
Loan Payments	\$41.5	33%
Replacement Motors	\$1.2	1%
Replacement Trailers	\$0.3	0%
Insurance	\$10.7	9%
Repairs	\$24.4	20%
Accessories	\$22.0	18%
Taxes	\$4.9	4%
Total	\$124.4	100%

Table 4. Economic Significance of Trip Spending and Annual Craft Spending by Power and Sailboats Registered in the Michigan 10th CD

	Trip Spending	Annual Craft Spending	Total
Direct Effects			
Sales (\$ Millions)	\$98.1	\$77.1	\$175.2
Jobs	1,007.9	892.2	1,900.1
Labor Income (\$ Millions)	\$28.9	\$29.7	\$58.6
Value Added (\$ Millions)	\$46.3	\$49.8	\$96.1
Total Effects			
Sales (\$ Millions)	\$262.9	\$195.6	\$458.4
Jobs	2,148.8	1,767.3	3,916.1
Labor Income (\$ Millions)	\$79.7	\$69.0	\$148.7
Value Added (\$ Millions)	\$134.9	\$115.2	\$250.0

Table 5. Economic Significance of Power and Sailboats Registered in the Michigan 10th CD

Sector/Spending category	Sales (\$ Millions)	Jobs	Labor Income (\$Millions)	Value Added (\$Millions)
Direct Effects				
Lodging	\$3.9	48.0	\$1.5	\$2.7
Marina Services	\$29.5	379.5	\$10.3	\$18.6
Restaurant	\$21.4	423.2	\$7.3	\$10.3
Recreation & Entertainment	\$4.5	57.3	\$1.6	\$2.8
Repair & Maintenance	\$24.4	305.4	\$9.0	\$12.7
Insurance & Credit	\$13.4	96.7	\$5.8	\$12.3
Gas Service	\$10.6	126.4	\$5.1	\$8.1
Other Retail Trade	\$16.3	308.0	\$8.0	\$12.9
Wholesale Trade	\$10.6	67.9	\$4.6	\$8.1
Other Local Production of Goods	\$40.5	87.7	\$5.5	\$7.7
Total Direct Effects	\$175.2	1,900.1	\$58.6	\$96.1
Secondary Effects	\$283.2	2,016.0	\$90.1	\$153.9
Total Effects	\$458.4	3,916.1	\$148.7	\$250.0

The Michigan 11th Congressional District

Table 1. The Michigan 11th Congressional District Description

Area (square miles)	399
Navigable Waterbody (square miles)	17
Total Population (2007)	667,487
Population Density (per square mile) (2007)	1,613
Persons 18+ (2007)	502,655
Number of Households (2007)	256,378

Table 2. Registered Boats Owned by Residents Residing in the Michigan 11th Congressional District

	11th CD	State Total
Number of Registered Boats	50,788	877,398
Type of Registered Boats		
Power Boats	39,611	733,531
Outboards	26,116	544,140
Inboards	2,251	25,465
Stern Drives	10,405	153,500
Jet Boats	839	10,426
Personal Watercraft	9,504	110,969
Sailboats	1,673	32,898
Size of Registered Boats		
≤ 15'	22,092	423,705
16'-24'	25,210	397,464
25'-39'	3,230	51,824
40' +	256	4,405
Per Capita Ownership of Registered Boats		
All Population	76/1000	87/1000
Persons 18 +	101/1000	118/1000
Households	198/1000	220/1000

Table 3. Boating-related Businesses Based on NAICS Codes

Category	11th CD	State Total
Boat Building		
No. of Businesses	-	39
No. of Employees	-	2,032
Total Sales (\$ Millions)	-	\$277.0
Motors & Engines Mfg.		
No. of Businesses	-	2
No. of Employees	-	5
Total Sales (\$ Millions)	-	\$0.3
Accessories & Supplies Mfg.		
No. of Businesses	-	38
No. of Employees	-	213
Total Sales (\$ Millions)	-	\$15.3
Dealers & Wholesalers		
No. of Businesses	7	437
No. of Employees	37	2,419
Total Sales (\$ Millions)	\$4.3	\$458.7
Boating Services		
No. of Businesses	9	453
No. of Employees	25	2,436
Total Sales (\$ Millions)	\$2.2	\$161.1

Figure 1. Location of the Michigan 11th Congressional District



Figure 2. Navigable Waters of the Michigan 11th Congressional District

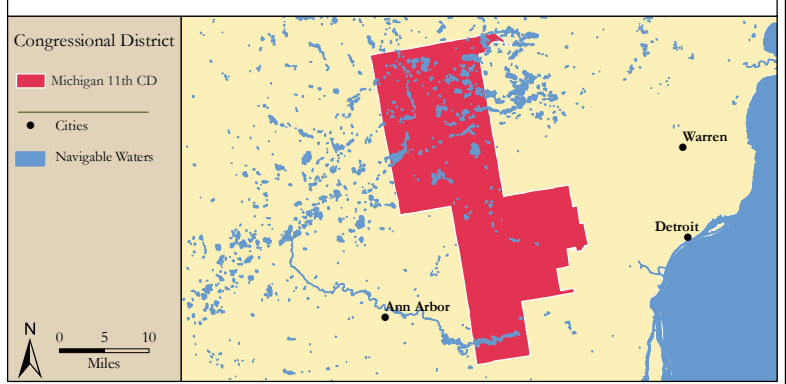


Figure 3. Number of Registered Boats by Zipcode within the Michigan 11th Congressional District

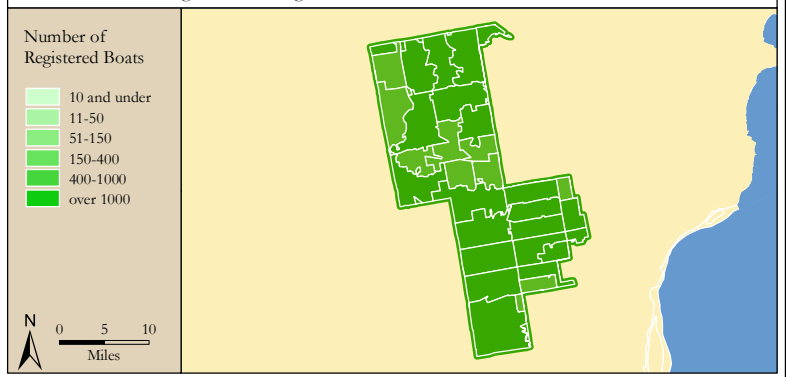
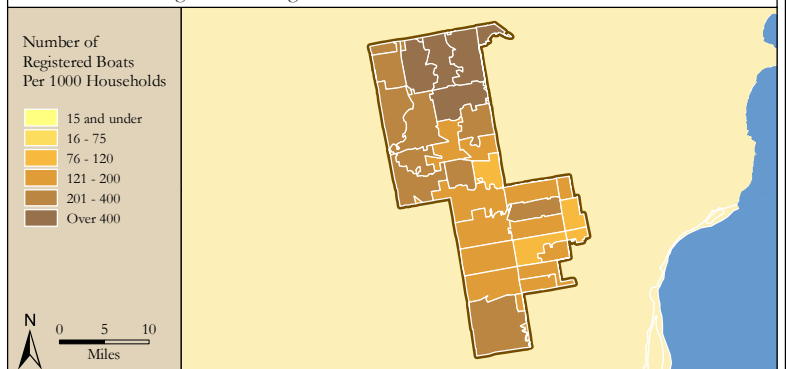


Figure 4. Per Capita (Household) Ownership of Registered Boats by Zipcode within the Michigan 11th Congressional District



Economic Significance of Boating

Table 1. Craft and Trip Expenses by Power and Sailboats Registered in the Michigan 11th Congressional District

Category	Boat Type and Size								Total
	Power <15'	Power 16' - 24'	Power 25' - 39'	Power 40'+	Sail <15'	Sail 16' - 24'	Sail 25' - 39'	Sail 40+	
Number of boats (Thousands of boats)	11.9	24.6	2.9	0.2	0.7	0.6	0.3	0.1	41.3
Annual craft spending (\$ per boat per year)	\$457.9	\$1,655.6	\$7,464.6	\$25,299.0	\$488.7	\$1,830.2	\$7,439.8	\$18,328.8	
Total craft spending (\$ Millions)	\$5.5	\$40.7	\$21.5	\$5.2	\$0.3	\$1.1	\$2.6	\$0.9	\$77.9
Total boat days (Thousands of days)	194.0	616.0	88.5	9.0	13.0	11.7	10.8	2.3	945.3
Total trip spending (\$ per boat per year)	\$935.9	\$2,148.4	\$4,574.4	\$8,039.6	\$1,009.7	\$1,009.7	\$1,963.9	\$5,204.7	
Total trip spending (\$ Millions)	\$11.2	\$52.9	\$13.2	\$1.7	\$0.7	\$0.6	\$0.7	\$0.3	\$81.1
Total craft & trip spending (\$ Millions)	\$16.6	\$93.6	\$34.7	\$6.9	\$1.0	\$1.7	\$3.2	\$1.2	\$159.0

Table 2. Total Spending on Boat Trips by Power and Sailboat Owners Registered in the Michigan 11th CD

Category	Total (\$ Millions)	Percentage
Lodging	\$3.1	4%
Marina services	\$6.7	8%
Restaurant	\$15.0	18%
Groceries	\$14.6	18%
Boat fuel	\$19.7	24%
Auto fuel	\$14.2	17%
Repair & Maintenance	-	-
Marine supplies	-	-
Recreation & Entertainment	\$3.3	4%
Shopping	\$2.4	3%
Other services	-	-
Other goods	\$2.0	2%
Total	\$81.1	100%

Table 3. Total Annual Craft Spending (not including purchases of boats) by Power and Sailboat Owners Registered in the Michigan 11th CD

Category	Total (\$ Millions)	Percentage
Slip	\$11.5	15%
Loan Payments	\$25.3	33%
Replacement Motors	\$0.9	1%
Replacement Trailers	\$0.2	0%
Insurance	\$6.9	9%
Repairs	\$15.4	20%
Accessories	\$14.5	19%
Taxes	\$3.1	4%
Total	\$77.9	100%

Table 4. Economic Significance of Trip Spending and Annual Craft Spending by Power and Sailboats Registered in the Michigan 11th CD

	Trip Spending	Annual Craft Spending	Total
Direct Effects			
Sales (\$ Millions)	\$69.1	\$48.6	\$117.7
Jobs	716.0	561.3	1,277.2
Labor Income (\$ Millions)	\$20.6	\$18.8	\$39.4
Value Added (\$ Millions)	\$33.0	\$31.4	\$64.4
Total Effects			
Sales (\$ Millions)	\$185.5	\$123.3	\$308.8
Jobs	1,524.6	1,112.6	2,637.2
Labor Income (\$ Millions)	\$56.5	\$43.5	\$100.1
Value Added (\$ Millions)	\$95.5	\$72.6	\$168.2

Table 5. Economic Significance of Power and Sailboats Registered in the Michigan 11th CD

Sector/Spending category	Sales (\$ Millions)	Jobs	Labor Income (\$Millions)	Value Added (\$Millions)
Direct Effects				
Lodging	\$3.1	39.1	\$1.3	\$2.2
Marina Services	\$18.2	233.5	\$6.4	\$11.4
Restaurant	\$15.0	297.1	\$5.1	\$7.2
Recreation & Entertainment	\$3.3	42.0	\$1.1	\$2.1
Repair & Maintenance	\$15.4	192.4	\$5.7	\$8.0
Insurance & Credit	\$8.6	61.9	\$3.7	\$7.8
Gas Service	\$7.6	89.8	\$3.6	\$5.7
Other Retail Trade	\$11.3	212.2	\$5.5	\$8.9
Wholesale Trade	\$7.4	47.5	\$3.2	\$5.6
Other Local Production of Goods	\$27.9	61.8	\$3.8	\$5.3
Total Direct Effects	\$117.7	1,277.2	\$39.4	\$64.4
Secondary Effects	\$191.1	1,360.0	\$60.7	\$103.7
Total Effects	\$308.8	2,637.2	\$100.1	\$168.2

The Michigan 12th Congressional District

Table 1. The Michigan 12th Congressional District Description

Area (square miles)	160
Navigable Waterbody (square miles)	0
Total Population (2007)	672,037
Population Density (per square mile) (2007)	4,182
Persons 18+ (2007)	527,535
Number of Households (2007)	281,639

Table 2. Registered Boats Owned by Residents Residing in the Michigan 12th Congressional District

	12th CD	State Total
Number of Registered Boats	28,833	877,398
Type of Registered Boats		
Power Boats	23,140	733,531
Outboards	13,990	544,140
Inboards	956	25,465
Stern Drives	7,700	153,500
Jet Boats	494	10,426
Personal Watercraft	4,844	110,969
Sailboats	849	32,898
Size of Registered Boats		
≤ 15'	12,288	423,705
16'-24'	12,855	397,464
25'-39'	3,422	51,824
40' +	268	4,405
Per Capita Ownership of Registered Boats		
All Population	43/1000	87/1000
Persons 18 +	55/1000	118/1000
Households	102/1000	220/1000

Table 3. Boating-related Businesses Based on NAICS Codes

Category	12th CD	State Total
Boat Building		
No. of Businesses	-	39
No. of Employees	-	2,032
Total Sales (\$ Millions)	-	\$277.0
Motors & Engines Mfg.		
No. of Businesses	-	2
No. of Employees	-	5
Total Sales (\$ Millions)	-	\$0.3
Accessories & Supplies Mfg.		
No. of Businesses	4	38
No. of Employees	31	213
Total Sales (\$ Millions)	\$1.9	\$15.3
Dealers & Wholesalers		
No. of Businesses	15	437
No. of Employees	103	2,419
Total Sales (\$ Millions)	\$46.8	\$458.7
Boating Services		
No. of Businesses	21	453
No. of Employees	84	2,436
Total Sales (\$ Millions)	\$5.1	\$161.1

Figure 1. Location of the Michigan 12th Congressional District



Figure 2. Navigable Waters of the Michigan 12th Congressional District

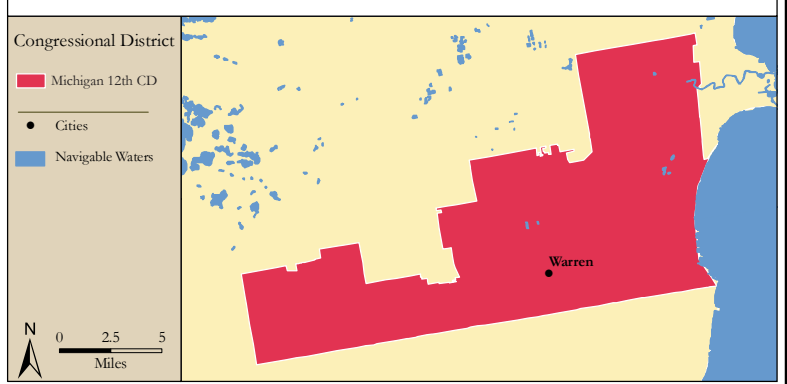


Figure 3. Number of Registered Boats by Zipcode within the Michigan 12th Congressional District

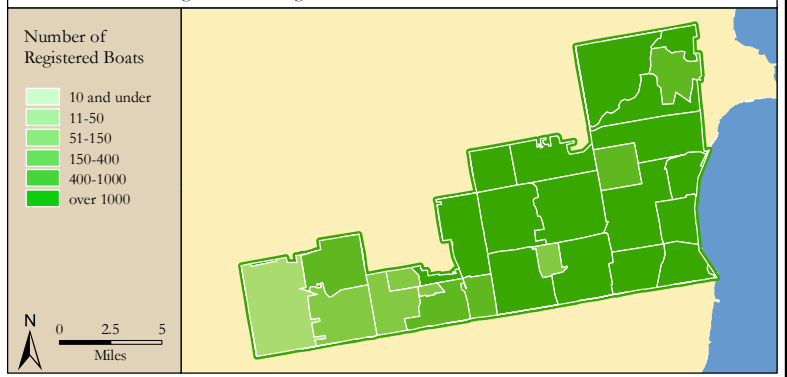
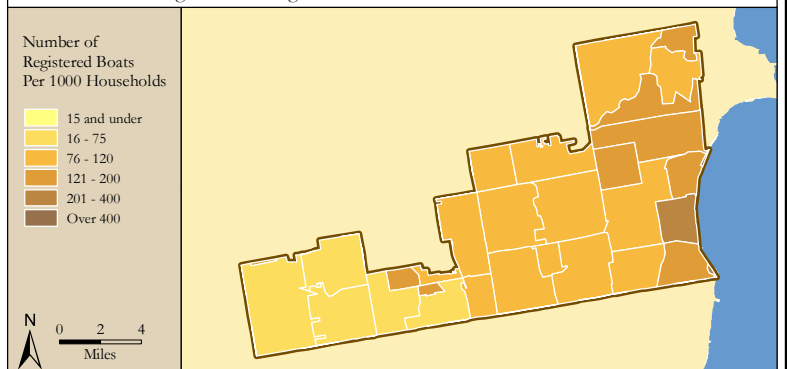


Figure 4. Per Capita (Household) Ownership of Registered Boats by Zipcode within the Michigan 12th Congressional District



Economic Significance of Boating

Table 1. Craft and Trip Expenses by Power and Sailboats Registered in the Michigan 12th Congressional District

Category	Boat Type and Size								Total
	Power <15'	Power 16' - 24'	Power 25' - 39'	Power 40'+	Sail <15'	Sail 16' - 24'	Sail 25' - 39'	Sail 40+	
Number of boats (Thousands of boats)	7.2	12.6	3.1	0.2	0.2	0.3	0.3	0.0	24.0
Annual craft spending (\$ per boat per year)	\$457.9	\$1,655.6	\$7,464.6	\$25,299.0	\$488.7	\$1,830.2	\$7,439.8	\$18,328.8	
Total craft spending (\$ Millions)	\$3.3	\$20.8	\$23.5	\$6.1	\$0.1	\$0.5	\$2.1	\$0.5	\$56.9
Total boat days (Thousands of days)	117.1	314.5	96.4	10.5	4.8	5.7	8.8	1.2	559.0
Total trip spending (\$ per boat per year)	\$935.9	\$2,148.4	\$4,574.4	\$8,039.6	\$1,009.7	\$1,009.7	\$1,963.9	\$5,204.7	
Total trip spending (\$ Millions)	\$6.7	\$27.0	\$14.4	\$1.9	\$0.3	\$0.3	\$0.5	\$0.1	\$51.3
Total craft & trip spending (\$ Millions)	\$10.0	\$47.8	\$37.8	\$8.0	\$0.4	\$0.8	\$2.6	\$0.6	\$108.2

Table 2. Total Spending on Boat Trips by Power and Sailboat Owners Registered in the Michigan 12th CD

Category	Total (\$ Millions)	Percentage
Lodging	\$1.7	3%
Marina services	\$4.6	9%
Restaurant	\$9.7	19%
Groceries	\$9.0	18%
Boat fuel	\$13.5	26%
Auto fuel	\$8.0	16%
Repair & Maintenance	-	-
Marine supplies	-	-
Recreation & Entertainment	\$2.0	4%
Shopping	\$1.5	3%
Other services	-	-
Other goods	\$1.2	2%
Total	\$51.3	100%

Table 3. Total Annual Craft Spending (not including purchases of boats) by Power and Sailboat Owners Registered in the Michigan 12th CD

Category	Total (\$ Millions)	Percentage
Slip	\$8.9	16%
Loan Payments	\$19.0	33%
Replacement Motors	\$0.6	1%
Replacement Trailers	\$0.1	0%
Insurance	\$4.9	9%
Repairs	\$11.2	20%
Accessories	\$10.0	18%
Taxes	\$2.2	4%
Total	\$56.9	100%

Table 4. Economic Significance of Trip Spending and Annual Craft Spending by Power and Sailboats Registered in the Michigan 12th CD

	Trip Spending	Annual Craft Spending	Total
Direct Effects			
Sales (\$ Millions)	\$44.3	\$35.3	\$79.6
Jobs	455.2	408.1	863.3
Labor Income (\$ Millions)	\$13.0	\$13.6	\$26.6
Value Added (\$ Millions)	\$20.9	\$22.8	\$43.7
Total Effects			
Sales (\$ Millions)	\$118.7	\$89.4	\$208.1
Jobs	970.5	808.2	1,778.7
Labor Income (\$ Millions)	\$36.0	\$31.5	\$67.5
Value Added (\$ Millions)	\$60.9	\$52.6	\$113.5

Table 5. Economic Significance of Power and Sailboats Registered in the Michigan 12th CD

Sector/Spending category	Sales (\$ Millions)	Jobs	Labor Income (\$Millions)	Value Added (\$Millions)
Direct Effects				
Lodging	\$1.7	21.6	\$0.7	\$1.2
Marina Services	\$13.5	173.7	\$4.7	\$8.5
Restaurant	\$9.7	191.5	\$3.3	\$4.6
Recreation & Entertainment	\$2.0	25.7	\$0.7	\$1.3
Repair & Maintenance	\$11.2	139.6	\$4.1	\$5.8
Insurance & Credit	\$6.1	44.1	\$2.6	\$5.6
Gas Service	\$4.8	57.0	\$2.3	\$3.6
Other Retail Trade	\$7.4	139.7	\$3.6	\$5.9
Wholesale Trade	\$4.8	30.7	\$2.1	\$3.6
Other Local Production of Goods	\$18.3	39.7	\$2.5	\$3.5
Total Direct Effects	\$79.6	863.3	\$26.6	\$43.7
Secondary Effects	\$128.6	915.4	\$40.9	\$69.9
Total Effects	\$208.1	1,778.7	\$67.5	\$113.5

The Michigan 13th Congressional District

Table 1. The Michigan 13th Congressional District Description

Area (square miles)	108
Navigable Waterbody (square miles)	1
Total Population (2007)	624,340
Population Density (per square mile) (2007)	5,745
Persons 18+ (2007)	446,867
Number of Households (2007)	221,796

Table 2. Registered Boats Owned by Residents Residing in the Michigan 13th Congressional District

	13th CD	State Total
Number of Registered Boats	12,940	877,398
Type of Registered Boats		
Power Boats	10,198	733,531
Outboards	5,867	544,140
Inboards	675	25,465
Stern Drives	3,476	153,500
Jet Boats	180	10,426
Personal Watercraft	1,684	110,969
Sailboats	1,058	32,898
Size of Registered Boats		
≤ 15'	4,806	423,705
16'-24'	5,757	397,464
25'-39'	2,091	51,824
40' +	286	4,405
Per Capita Ownership of Registered Boats		
All Population	21/1000	87/1000
Persons 18 +	29/1000	118/1000
Households	58/1000	220/1000

Table 3. Boating-related Businesses Based on NAICS Codes

Category	13th CD	State Total
Boat Building		
No. of Businesses	-	39
No. of Employees	-	2,032
Total Sales (\$ Millions)	-	\$277.0
Motors & Engines Mfg.		
No. of Businesses	-	2
No. of Employees	-	5
Total Sales (\$ Millions)	-	\$0.3
Accessories & Supplies Mfg.		
No. of Businesses	-	38
No. of Employees	-	213
Total Sales (\$ Millions)	-	\$15.3
Dealers & Wholesalers		
No. of Businesses	10	437
No. of Employees	25	2,419
Total Sales (\$ Millions)	\$3.6	\$458.7
Boating Services		
No. of Businesses	18	453
No. of Employees	294	2,436
Total Sales (\$ Millions)	\$11.2	\$161.1

Figure 1. Location of the Michigan 13th Congressional District



Figure 2. Navigable Waters of the Michigan 13th Congressional District

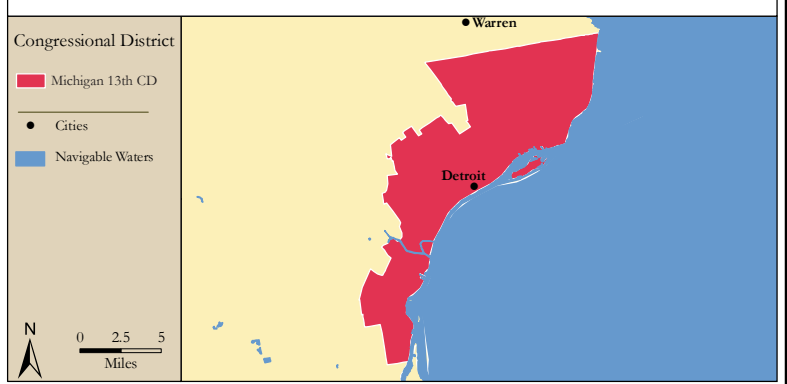


Figure 3. Number of Registered Boats by Zipcode within the Michigan 13th Congressional District

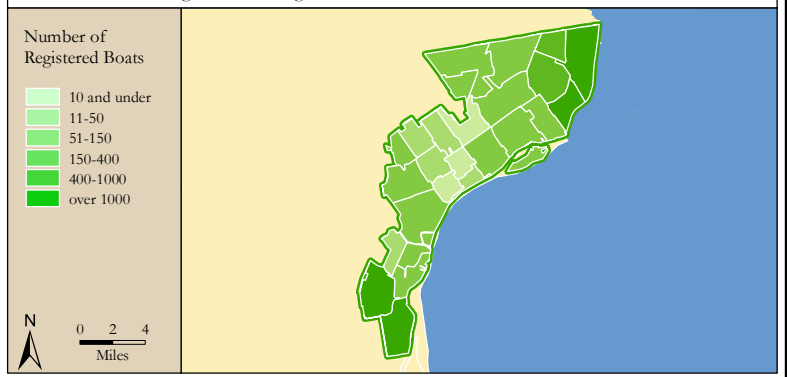
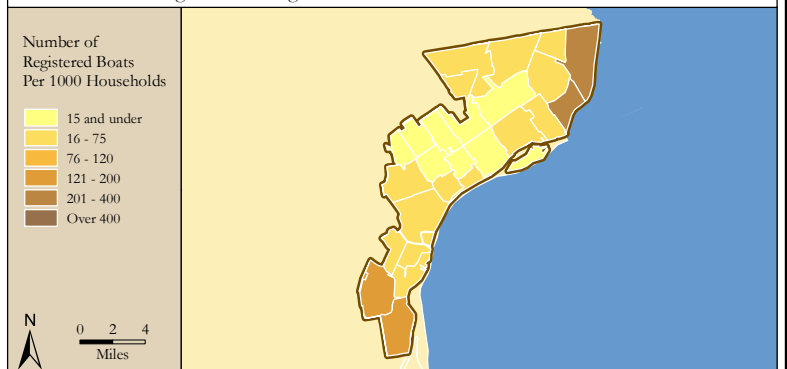


Figure 4. Per Capita (Household) Ownership of Registered Boats by Zipcode within the Michigan 13th Congressional District



Economic Significance of Boating

Table 1. Craft and Trip Expenses by Power and Sailboats Registered in the Michigan 13th Congressional District

Category	Boat Type and Size								Total
	Power <15'	Power 16' - 24'	Power 25' - 39'	Power 40'+	Sail <15'	Sail 16' - 24'	Sail 25' - 39'	Sail 40+	
Number of boats (Thousands of boats)	2.9	5.4	1.6	0.2	0.2	0.3	0.5	0.1	11.3
Annual craft spending (\$ per boat per year)	\$457.9	\$1,655.6	\$7,464.6	\$25,299.0	\$488.7	\$1,830.2	\$7,439.8	\$18,328.8	
Total craft spending (\$ Millions)	\$1.3	\$9.0	\$12.1	\$5.7	\$0.1	\$0.6	\$3.5	\$1.1	\$33.4
Total boat days (Thousands of days)	47.5	136.3	49.6	9.8	4.0	6.1	14.9	2.8	270.9
Total trip spending (\$ per boat per year)	\$935.9	\$2,148.4	\$4,574.4	\$8,039.6	\$1,009.7	\$1,009.7	\$1,963.9	\$5,204.7	
Total trip spending (\$ Millions)	\$2.7	\$11.7	\$7.4	\$1.8	\$0.2	\$0.3	\$0.9	\$0.3	\$25.4
Total craft & trip spending (\$ Millions)	\$4.1	\$20.7	\$19.5	\$7.5	\$0.3	\$0.9	\$4.5	\$1.4	\$58.8

Table 2. Total Spending on Boat Trips by Power and Sailboat Owners Registered in the Michigan 13th CD

Category	Total (\$ Millions)	Percentage
Lodging	\$0.8	3%
Marina services	\$2.5	10%
Restaurant	\$5.0	19%
Groceries	\$4.5	18%
Boat fuel	\$6.7	26%
Auto fuel	\$3.7	15%
Repair & Maintenance	-	-
Marine supplies	-	-
Recreation & Entertainment	\$1.0	4%
Shopping	\$0.8	3%
Other services	-	-
Other goods	\$0.6	2%
Total	\$25.4	100%

Table 3. Total Annual Craft Spending (not including purchases of boats) by Power and Sailboat Owners Registered in the Michigan 13th CD

Category	Total (\$ Millions)	Percentage
Slip	\$5.7	17%
Loan Payments	\$10.9	33%
Replacement Motors	\$0.3	1%
Replacement Trailers	\$0.1	0%
Insurance	\$2.8	8%
Repairs	\$6.6	20%
Accessories	\$5.8	17%
Taxes	\$1.3	4%
Total	\$33.4	100%

Table 4. Economic Significance of Trip Spending and Annual Craft Spending by Power and Sailboats Registered in the Michigan 13th CD

	Trip Spending	Annual Craft Spending	Total
Direct Effects			
Sales (\$ Millions)	\$22.1	\$21.1	\$43.2
Jobs	229.4	245.3	474.7
Labor Income (\$ Millions)	\$6.5	\$8.1	\$14.6
Value Added (\$ Millions)	\$10.4	\$13.6	\$24.0
Total Effects			
Sales (\$ Millions)	\$59.4	\$53.5	\$112.9
Jobs	487.6	484.9	972.5
Labor Income (\$ Millions)	\$18.0	\$18.8	\$36.9
Value Added (\$ Millions)	\$30.5	\$31.5	\$61.9

Table 5. Economic Significance of Power and Sailboats Registered in the Michigan 13th CD

Sector/Spending category	Sales (\$ Millions)	Jobs	Labor Income (\$Millions)	Value Added (\$Millions)
Direct Effects				
Lodging	\$0.8	9.9	\$0.3	\$0.6
Marina Services	\$8.2	105.3	\$2.9	\$5.2
Restaurant	\$5.0	98.1	\$1.7	\$2.4
Recreation & Entertainment	\$1.0	12.6	\$0.3	\$0.6
Repair & Maintenance	\$6.6	82.9	\$2.5	\$3.5
Insurance & Credit	\$3.5	25.2	\$1.5	\$3.2
Gas Service	\$2.3	27.4	\$1.1	\$1.8
Other Retail Trade	\$4.0	76.3	\$2.0	\$3.2
Wholesale Trade	\$2.5	16.0	\$1.1	\$1.9
Other Local Production of Goods	\$9.3	20.9	\$1.3	\$1.8
Total Direct Effects	\$43.2	474.7	\$14.6	\$24.0
Secondary Effects	\$69.7	497.8	\$22.2	\$37.9
Total Effects	\$112.9	972.5	\$36.9	\$61.9

The Michigan 14th Congressional District

Table 1. The Michigan 14th Congressional District Description

Area (square miles)	123
Navigable Waterbody (square miles)	1
Total Population (2007)	626,981
Population Density (per square mile) (2007)	5,114
Persons 18+ (2007)	454,457
Number of Households (2007)	226,156

Table 2. Registered Boats Owned by Residents Residing in the Michigan 14th Congressional District

	14th CD	State Total
Number of Registered Boats	15,774	877,398
Type of Registered Boats		
Power Boats	13,143	733,531
Outboards	8,390	544,140
Inboards	577	25,465
Stern Drives	4,019	153,500
Jet Boats	157	10,426
Personal Watercraft	2,143	110,969
Sailboats	488	32,898
Size of Registered Boats		
≤ 15'	6,352	423,705
16'-24'	7,293	397,464
25'-39'	1,983	51,824
40' +	146	4,405
Per Capita Ownership of Registered Boats		
All Population	25/1000	87/1000
Persons 18 +	35/1000	118/1000
Households	70/1000	220/1000

Table 3. Boating-related Businesses Based on NAICS Codes

Category	14th CD	State Total
Boat Building		
No. of Businesses	1	39
No. of Employees	7	2,032
Total Sales (\$ Millions)	\$0.4	\$277.0
Motors & Engines Mfg.		
No. of Businesses	-	2
No. of Employees	-	5
Total Sales (\$ Millions)	-	\$0.3
Accessories & Supplies Mfg.		
No. of Businesses	-	38
No. of Employees	-	213
Total Sales (\$ Millions)	-	\$15.3
Dealers & Wholesalers		
No. of Businesses	8	437
No. of Employees	13	2,419
Total Sales (\$ Millions)	\$1.9	\$458.7
Boating Services		
No. of Businesses	15	453
No. of Employees	253	2,436
Total Sales (\$ Millions)	\$8.7	\$161.1

Figure 1. Location of the Michigan 14th Congressional District



Figure 2. Navigable Waters of the Michigan 14th Congressional District

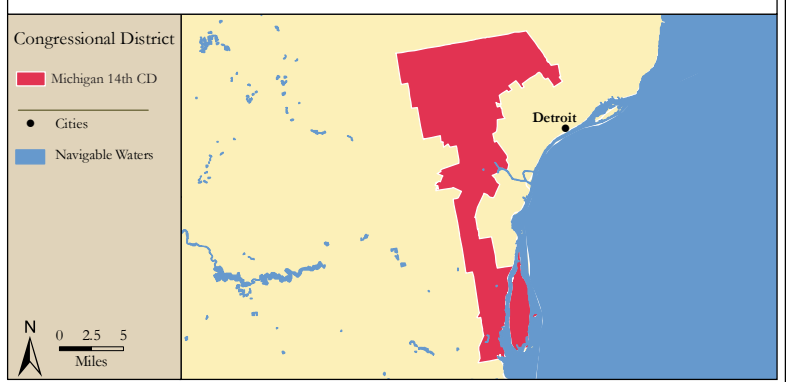


Figure 3. Number of Registered Boats by Zipcode within the Michigan 14th Congressional District

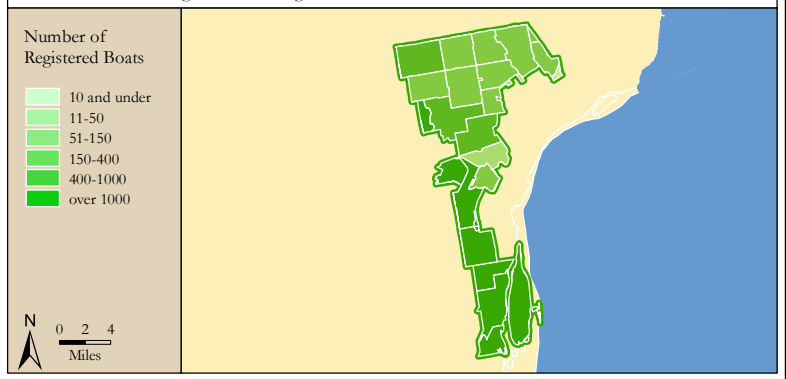
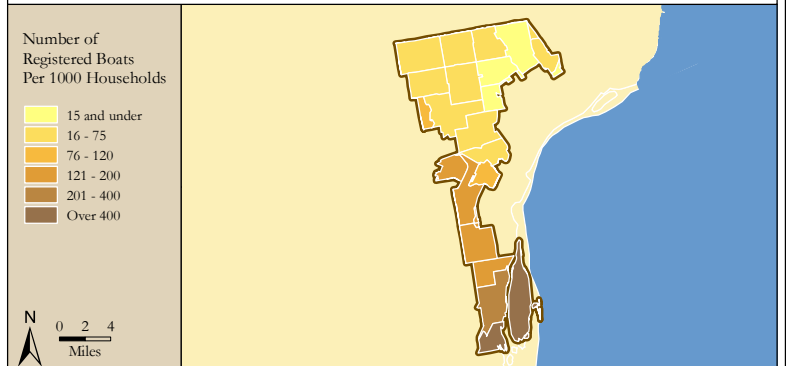


Figure 4. Per Capita (Household) Ownership of Registered Boats by Zipcode within the Michigan 14th Congressional District



Economic Significance of Boating

Table 1. Craft and Trip Expenses by Power and Sailboats Registered in the Michigan 14th Congressional District

Category	Boat Type and Size								Total
	Power <15'	Power 16' - 24'	Power 25' - 39'	Power 40'+	Sail <15'	Sail 16' - 24'	Sail 25' - 39'	Sail 40+	
Number of boats (Thousands of boats)	4.1	7.1	1.8	0.1	0.1	0.1	0.2	0.0	13.6
Annual craft spending (\$ per boat per year)	\$457.9	\$1,655.6	\$7,464.6	\$25,299.0	\$488.7	\$1,830.2	\$7,439.8	\$18,328.8	
Total craft spending (\$ Millions)	\$1.9	\$11.8	\$13.2	\$3.3	\$0.1	\$0.3	\$1.6	\$0.3	\$32.4
Total boat days (Thousands of days)	66.7	179.0	54.2	5.7	2.2	2.8	6.8	0.6	318.0
Total trip spending (\$ per boat per year)	\$935.9	\$2,148.4	\$4,574.4	\$8,039.6	\$1,009.7	\$1,009.7	\$1,963.9	\$5,204.7	
Total trip spending (\$ Millions)	\$3.8	\$15.4	\$8.1	\$1.1	\$0.1	\$0.1	\$0.4	\$0.1	\$29.1
Total craft & trip spending (\$ Millions)	\$5.7	\$27.2	\$21.3	\$4.4	\$0.2	\$0.4	\$2.0	\$0.3	\$61.5

Table 2. Total Spending on Boat Trips by Power and Sailboat Owners Registered in the Michigan 14th CD

Category	Total (\$ Millions)	Percentage
Lodging	\$1.0	3%
Marina services	\$2.6	9%
Restaurant	\$5.5	19%
Groceries	\$5.1	18%
Boat fuel	\$7.6	26%
Auto fuel	\$4.6	16%
Repair & Maintenance	-	-
Marine supplies	-	-
Recreation & Entertainment	\$1.1	4%
Shopping	\$0.9	3%
Other services	-	-
Other goods	\$0.7	2%
Total	\$29.1	100%

Table 3. Total Annual Craft Spending (not including purchases of boats) by Power and Sailboat Owners Registered in the Michigan 14th CD

Category	Total (\$ Millions)	Percentage
Slip	\$5.1	16%
Loan Payments	\$10.8	33%
Replacement Motors	\$0.3	1%
Replacement Trailers	\$0.1	0%
Insurance	\$2.8	9%
Repairs	\$6.4	20%
Accessories	\$5.7	18%
Taxes	\$1.3	4%
Total	\$32.4	100%

Table 4. Economic Significance of Trip Spending and Annual Craft Spending by Power and Sailboats Registered in the Michigan 14th CD

	Trip Spending	Annual Craft Spending	Total
Direct Effects			
Sales (\$ Millions)	\$25.1	\$20.2	\$45.3
Jobs	258.4	233.4	491.8
Labor Income (\$ Millions)	\$7.4	\$7.8	\$15.2
Value Added (\$ Millions)	\$11.9	\$13.0	\$24.9
Total Effects			
Sales (\$ Millions)	\$67.4	\$51.1	\$118.5
Jobs	550.9	462.2	1,013.1
Labor Income (\$ Millions)	\$20.4	\$18.0	\$38.5
Value Added (\$ Millions)	\$34.6	\$30.1	\$64.7

Table 5. Economic Significance of Power and Sailboats Registered in the Michigan 14th CD

Sector/Spending category	Sales (\$ Millions)	Jobs	Labor Income (\$Millions)	Value Added (\$Millions)
Direct Effects				
Lodging	\$1.0	12.3	\$0.4	\$0.7
Marina Services	\$7.7	99.5	\$2.7	\$4.9
Restaurant	\$5.5	108.7	\$1.9	\$2.6
Recreation & Entertainment	\$1.1	14.6	\$0.4	\$0.7
Repair & Maintenance	\$6.4	79.7	\$2.4	\$3.3
Insurance & Credit	\$3.5	25.1	\$1.5	\$3.2
Gas Service	\$2.7	32.3	\$1.3	\$2.1
Other Retail Trade	\$4.2	79.6	\$2.1	\$3.3
Wholesale Trade	\$2.7	17.5	\$1.2	\$2.1
Other Local Production of Goods	\$10.4	22.6	\$1.4	\$2.0
Total Direct Effects	\$45.3	491.8	\$15.2	\$24.9
Secondary Effects	\$73.2	521.2	\$23.3	\$39.8
Total Effects	\$118.5	1,013.1	\$38.5	\$64.7

The Michigan 15th Congressional District

Table 1. The Michigan 15th Congressional District Description

Area (square miles)	961
Navigable Waterbody (square miles)	23
Total Population (2007)	685,369
Population Density (per square mile) (2007)	706
Persons 18+ (2007)	523,736
Number of Households (2007)	260,281

Table 2. Registered Boats Owned by Residents Residing in the Michigan 15th Congressional District

	15th CD	State Total
Number of Registered Boats	36,763	877,398
Type of Registered Boats		
Power Boats	29,902	733,531
Outboards	20,273	544,140
Inboards	1,016	25,465
Stern Drives	8,149	153,500
Jet Boats	464	10,426
Personal Watercraft	5,173	110,969
Sailboats	1,688	32,898
Size of Registered Boats		
≤ 15'	16,418	423,705
16'-24'	17,386	397,464
25'-39'	2,791	51,824
40' +	168	4,405
Per Capita Ownership of Registered Boats		
All Population	54/1000	87/1000
Persons 18 +	70/1000	118/1000
Households	141/1000	220/1000

Table 3. Boating-related Businesses Based on NAICS Codes

Category	15th CD	State Total
Boat Building		
No. of Businesses	-	39
No. of Employees	-	2,032
Total Sales (\$ Millions)	-	\$277.0
Motors & Engines Mfg.		
No. of Businesses	-	2
No. of Employees	-	5
Total Sales (\$ Millions)	-	\$0.3
Accessories & Supplies Mfg.		
No. of Businesses	-	38
No. of Employees	-	213
Total Sales (\$ Millions)	-	\$15.3
Dealers & Wholesalers		
No. of Businesses	14	437
No. of Employees	31	2,419
Total Sales (\$ Millions)	\$4.3	\$458.7
Boating Services		
No. of Businesses	16	453
No. of Employees	100	2,436
Total Sales (\$ Millions)	\$26.8	\$161.1

Figure 1. Location of the Michigan 15th Congressional District



Figure 2. Navigable Waters of the Michigan 15th Congressional District

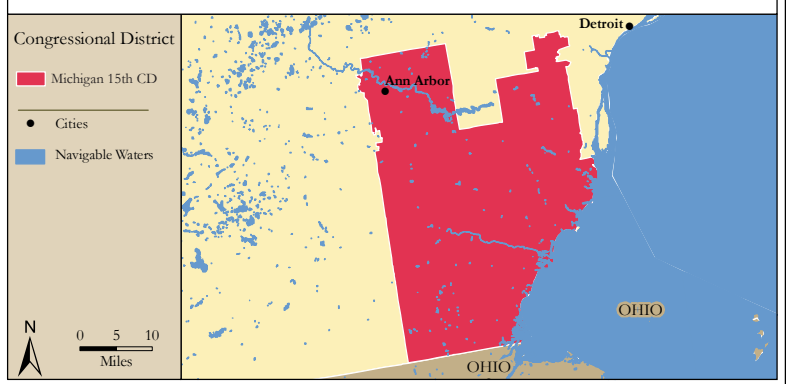


Figure 3. Number of Registered Boats by Zipcode within the Michigan 15th Congressional District

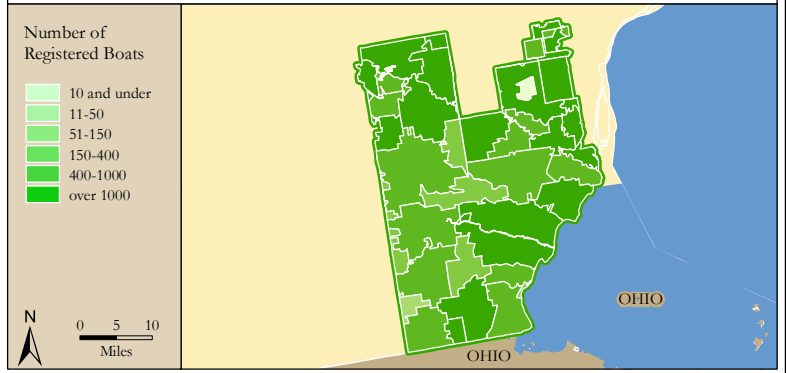
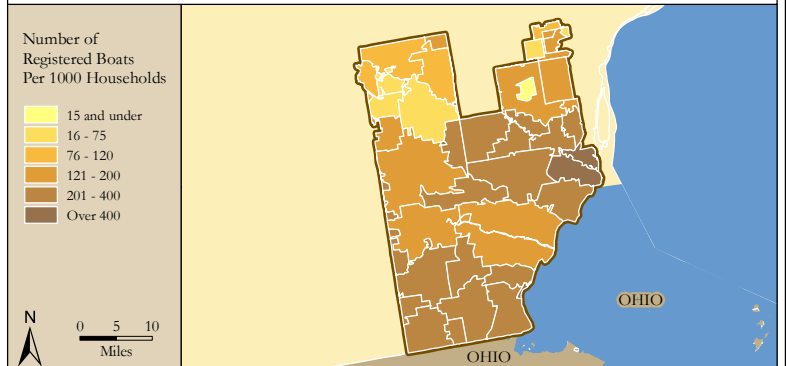


Figure 4. Per Capita (Household) Ownership of Registered Boats by Zipcode within the Michigan 15th Congressional District



Economic Significance of Boating

Table 1. Craft and Trip Expenses by Power and Sailboats Registered in the Michigan 15th Congressional District

Category	Boat Type and Size								Total
	Power <15'	Power 16' - 24'	Power 25' - 39'	Power 40'+	Sail <15'	Sail 16' - 24'	Sail 25' - 39'	Sail 40+	
Number of boats (Thousands of boats)	10.6	16.9	2.4	0.1	0.7	0.5	0.4	0.0	31.6
Annual craft spending (\$ per boat per year)	\$457.9	\$1,655.6	\$7,464.6	\$25,299.0	\$488.7	\$1,830.2	\$7,439.8	\$18,328.8	
Total craft spending (\$ Millions)	\$4.8	\$27.9	\$17.6	\$3.4	\$0.3	\$1.0	\$3.2	\$0.6	\$58.9
Total boat days (Thousands of days)	172.0	421.9	72.3	5.8	13.2	10.3	13.7	1.6	710.7
Total trip spending (\$ per boat per year)	\$935.9	\$2,148.4	\$4,574.4	\$8,039.6	\$1,009.7	\$1,009.7	\$1,963.9	\$5,204.7	
Total trip spending (\$ Millions)	\$9.9	\$36.2	\$10.8	\$1.1	\$0.7	\$0.5	\$0.9	\$0.2	\$60.2
Total craft & trip spending (\$ Millions)	\$14.7	\$64.1	\$28.4	\$4.4	\$1.0	\$1.5	\$4.1	\$0.8	\$119.1

Table 2. Total Spending on Boat Trips by Power and Sailboat Owners Registered in the Michigan 15th CD

Category	Total (\$ Millions)	Percentage
Lodging	\$2.3	4%
Marina services	\$5.1	8%
Restaurant	\$11.2	19%
Groceries	\$10.8	18%
Boat fuel	\$14.6	24%
Auto fuel	\$10.4	17%
Repair & Maintenance	-	-
Marine supplies	-	-
Recreation & Entertainment	\$2.4	4%
Shopping	\$1.8	3%
Other services	-	-
Other goods	\$1.5	2%
Total	\$60.2	100%

Table 3. Total Annual Craft Spending (not including purchases of boats) by Power and Sailboat Owners Registered in the Michigan 15th CD

Category	Total (\$ Millions)	Percentage
Slip	\$8.9	15%
Loan Payments	\$18.9	32%
Replacement Motors	\$0.7	1%
Replacement Trailers	\$0.2	0%
Insurance	\$5.2	9%
Repairs	\$11.7	20%
Accessories	\$11.0	19%
Taxes	\$2.3	4%
Total	\$58.9	100%

Table 4. Economic Significance of Trip Spending and Annual Craft Spending by Power and Sailboats Registered in the Michigan 15th CD

	Trip Spending	Annual Craft Spending	Total
Direct Effects			
Sales (\$ Millions)	\$51.4	\$37.1	\$88.5
Jobs	533.9	428.9	962.8
Labor Income (\$ Millions)	\$15.3	\$14.3	\$29.6
Value Added (\$ Millions)	\$24.5	\$24.0	\$48.5
Total Effects			
Sales (\$ Millions)	\$137.9	\$94.1	\$232.1
Jobs	1,135.4	849.8	1,985.2
Labor Income (\$ Millions)	\$42.1	\$33.2	\$75.2
Value Added (\$ Millions)	\$71.0	\$55.4	\$126.4

Table 5. Economic Significance of Power and Sailboats Registered in the Michigan 15th CD

Sector/Spending category	Sales (\$ Millions)	Jobs	Labor Income (\$Millions)	Value Added (\$Millions)
Direct Effects				
Lodging	\$2.3	28.2	\$0.9	\$1.6
Marina Services	\$14.0	180.4	\$4.9	\$8.8
Restaurant	\$11.2	222.5	\$3.8	\$5.4
Recreation & Entertainment	\$2.4	31.4	\$0.9	\$1.5
Repair & Maintenance	\$11.7	146.3	\$4.3	\$6.1
Insurance & Credit	\$6.4	46.4	\$2.8	\$5.9
Gas Service	\$5.6	66.2	\$2.7	\$4.2
Other Retail Trade	\$8.5	159.8	\$4.1	\$6.7
Wholesale Trade	\$5.5	35.4	\$2.4	\$4.2
Other Local Production of Goods	\$20.8	46.2	\$2.8	\$4.0
Total Direct Effects	\$88.5	962.8	\$29.6	\$48.5
Secondary Effects	\$143.6	1,022.5	\$45.6	\$78.0
Total Effects	\$232.1	1,985.2	\$75.2	\$126.4