

The North Carolina 1st Congressional District

Table 1. The North Carolina 1st Congressional District Description

Area (square miles)	7,199
Navigable Waterbody (square miles)	701
Total Population (2007)	622,953
Population Density (per square mile) (2007)	85
Persons 18+ (2007)	467,083
Number of Households (2007)	246,377

Table 2. Registered Boats Owned by Residents Residing in the North Carolina 1st Congressional District

	1st CD	State Total
Number of Registered Boats	32,200	383,604
Type of Registered Boats		
Power Boats	27,863	322,452
Outboards	23,410	253,558
Inboards	855	13,679
Stern Drives	3,427	52,681
Jet Boats	171	2,534
Personal Watercraft	3,756	52,866
Sailboats	581	8,286
Size of Registered Boats		
≤ 15'	12,180	137,175
16'-24'	18,393	221,475
25'-39'	1,513	22,851
40' +	114	2,103
Per Capita Ownership of Registered Boats		
All Population	52/1000	43/1000
Persons 18 +	69/1000	57/1000
Households	131/1000	106/1000

Table 3. Boating-related Businesses Based on NAICS Codes

Category	1st CD	State Total
Boat Building		
No. of Businesses	3	49
No. of Employees	202	1,646
Total Sales (\$ Millions)	\$12.1	\$215.7
Motors & Engines Mfg.		
No. of Businesses	-	1
No. of Employees	-	4
Total Sales (\$ Millions)	-	\$0.3
Accessories & Supplies Mfg.		
No. of Businesses	4	17
No. of Employees	57	165
Total Sales (\$ Millions)	\$3.3	\$12.3
Dealers & Wholesalers		
No. of Businesses	21	288
No. of Employees	116	1,734
Total Sales (\$ Millions)	\$19.5	\$413.9
Boating Services		
No. of Businesses	12	227
No. of Employees	37	1,022
Total Sales (\$ Millions)	\$2.0	\$303.5

Figure 1. Location of the North Carolina 1st Congressional District



Figure 2. Navigable Waters of the North Carolina 1st Congressional District

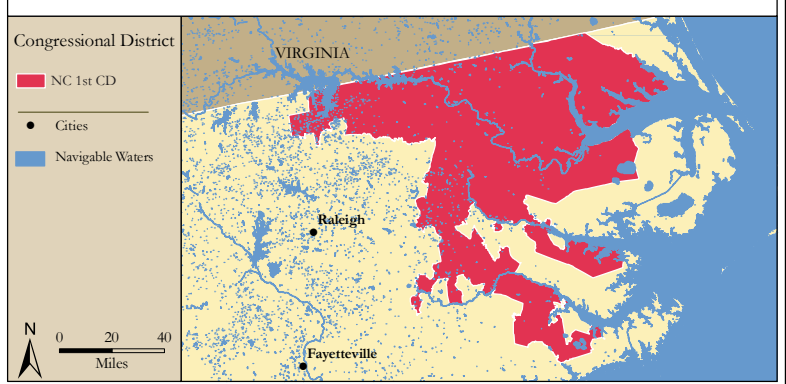


Figure 3. Number of Registered Boats by Zipcode within the North Carolina 1st Congressional District

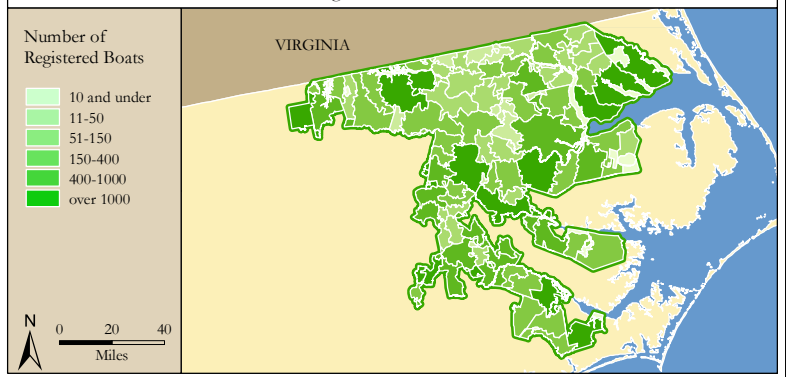
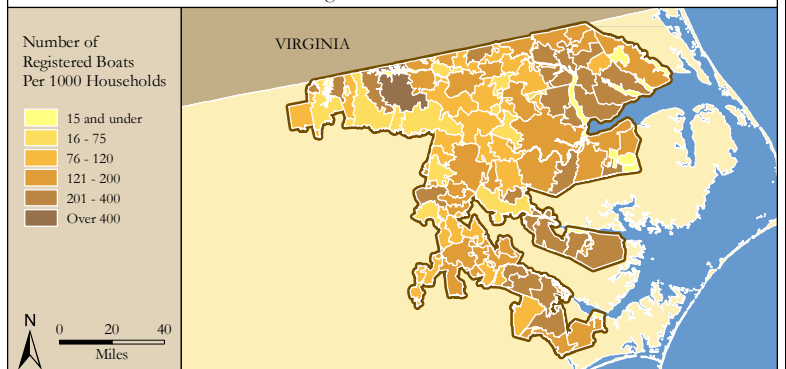


Figure 4. Per Capita (Household) Ownership of Registered Boats by Zipcode within the North Carolina 1st Congressional District



Economic Significance of Boating

Table 1. Craft and Trip Expenses by Power and Sailboats Registered in the North Carolina 1st Congressional District

Category	Boat Type and Size								Total
	Power <15'	Power 16' - 24'	Power 25' - 39'	Power 40'+	Sail <15'	Sail 16' - 24'	Sail 25' - 39'	Sail 40+	
Number of boats (Thousands of boats)	8.4	18.1	1.3	0.1	0.1	0.2	0.3	0.0	28.4
Annual craft spending (\$ per boat per year)	\$457.9	\$1,655.6	\$7,464.6	\$25,299.0	\$488.7	\$1,830.2	\$7,439.8	\$18,328.8	
Total craft spending (\$ Millions)	\$3.8	\$30.0	\$9.4	\$2.2	\$0.0	\$0.5	\$1.9	\$0.5	\$48.3
Total boat days (Thousands of days)	136.3	454.4	38.5	3.8	1.0	4.7	8.1	1.2	648.1
Total trip spending (\$ per boat per year)	\$935.9	\$2,148.4	\$4,574.4	\$8,039.6	\$1,009.7	\$1,009.7	\$1,963.9	\$5,204.7	
Total trip spending (\$ Millions)	\$7.8	\$39.0	\$5.7	\$0.7	\$0.1	\$0.2	\$0.5	\$0.1	\$54.2
Total craft & trip spending (\$ Millions)	\$11.7	\$69.0	\$15.1	\$2.9	\$0.1	\$0.7	\$2.4	\$0.6	\$102.6

Table 2. Total Spending on Boat Trips by Power and Sailboat Owners Registered in the North Carolina 1st CD

Category	Total (\$ Millions)	Percentage
Lodging	\$2.2	4%
Marina services	\$4.3	8%
Restaurant	\$9.9	18%
Groceries	\$9.9	18%
Boat fuel	\$12.8	24%
Auto fuel	\$9.9	18%
Repair & Maintenance	-	-
Marine supplies	-	-
Recreation & Entertainment	\$2.2	4%
Shopping	\$1.6	3%
Other services	-	-
Other goods	\$1.4	3%
Total	\$54.2	100%

Table 3. Total Annual Craft Spending (not including purchases of boats) by Power and Sailboat Owners Registered in the North Carolina 1st CD

Category	Total (\$ Millions)	Percentage
Slip	\$6.9	14%
Loan Payments	\$15.6	32%
Replacement Motors	\$0.6	1%
Replacement Trailers	\$0.1	0%
Insurance	\$4.4	9%
Repairs	\$9.6	20%
Accessories	\$9.2	19%
Taxes	\$2.0	4%
Total	\$48.3	100%

Table 4. Economic Significance of Trip Spending and Annual Craft Spending by Power and Sailboats Registered in the North Carolina 1st CD

	Trip Spending	Annual Craft Spending	Total
Direct Effects			
Sales (\$ Millions)	\$45.9	\$30.3	\$76.2
Jobs	476.0	348.8	824.8
Labor Income (\$ Millions)	\$13.7	\$11.7	\$25.4
Value Added (\$ Millions)	\$22.0	\$19.6	\$41.6
Total Effects			
Sales (\$ Millions)	\$123.2	\$76.8	\$200.0
Jobs	1,014.0	691.9	1,705.9
Labor Income (\$ Millions)	\$37.6	\$27.1	\$64.7
Value Added (\$ Millions)	\$63.6	\$45.2	\$108.8

Table 5. Economic Significance of Power and Sailboats Registered in the North Carolina 1st CD

Sector/Spending category	Sales (\$ Millions)	Jobs	Labor Income (\$Millions)	Value Added (\$Millions)
Direct Effects				
Lodging	\$2.2	27.7	\$0.9	\$1.6
Marina Services	\$11.2	143.3	\$3.9	\$7.0
Restaurant	\$9.9	195.3	\$3.4	\$4.7
Recreation & Entertainment	\$2.2	28.5	\$0.8	\$1.4
Repair & Maintenance	\$9.6	120.2	\$3.6	\$5.0
Insurance & Credit	\$5.4	38.9	\$2.3	\$4.9
Gas Service	\$5.1	60.1	\$2.4	\$3.8
Other Retail Trade	\$7.4	138.6	\$3.6	\$5.8
Wholesale Trade	\$4.9	31.3	\$2.1	\$3.7
Other Local Production of Goods	\$18.4	40.9	\$2.5	\$3.5
Total Direct Effects	\$76.2	824.8	\$25.4	\$41.6
Secondary Effects	\$123.8	881.1	\$39.3	\$67.2
Total Effects	\$200.0	1,705.9	\$64.7	\$108.8

The North Carolina 2nd Congressional District

Table 1. The North Carolina 2nd Congressional District Description

Area (square miles)	3,956
Navigable Waterbody (square miles)	54
Total Population (2007)	710,599
Population Density (per square mile) (2007)	179
Persons 18+ (2007)	527,708
Number of Households (2007)	252,397

Table 2. Registered Boats Owned by Residents Residing in the North Carolina 2nd Congressional District

	2nd CD	State Total
Number of Registered Boats	23,737	383,604
Type of Registered Boats		
Power Boats	20,764	322,452
Outboards	17,211	253,558
Inboards	775	13,679
Stern Drives	2,636	52,681
Jet Boats	142	2,534
Personal Watercraft	2,679	52,866
Sailboats	294	8,286
Size of Registered Boats		
≤ 15'	9,462	137,175
16'-24'	13,418	221,475
25'-39'	807	22,851
40' +	50	2,103
Per Capita Ownership of Registered Boats		
All Population	33/1000	43/1000
Persons 18 +	45/1000	57/1000
Households	94/1000	106/1000

Table 3. Boating-related Businesses Based on NAICS Codes

Category	2nd CD	State Total
Boat Building		
No. of Businesses	1	49
No. of Employees	35	1,646
Total Sales (\$ Millions)	\$5.0	\$215.7
Motors & Engines Mfg.		
No. of Businesses	-	1
No. of Employees	-	4
Total Sales (\$ Millions)	-	\$0.3
Accessories & Supplies Mfg.		
No. of Businesses	1	17
No. of Employees	27	165
Total Sales (\$ Millions)	\$2.4	\$12.3
Dealers & Wholesalers		
No. of Businesses	9	288
No. of Employees	64	1,734
Total Sales (\$ Millions)	\$9.1	\$413.9
Boating Services		
No. of Businesses	3	227
No. of Employees	8	1,022
Total Sales (\$ Millions)	\$0.4	\$303.5

Figure 1. Location of the North Carolina 2nd Congressional District



Figure 2. Navigable Waters of the North Carolina 2nd Congressional District

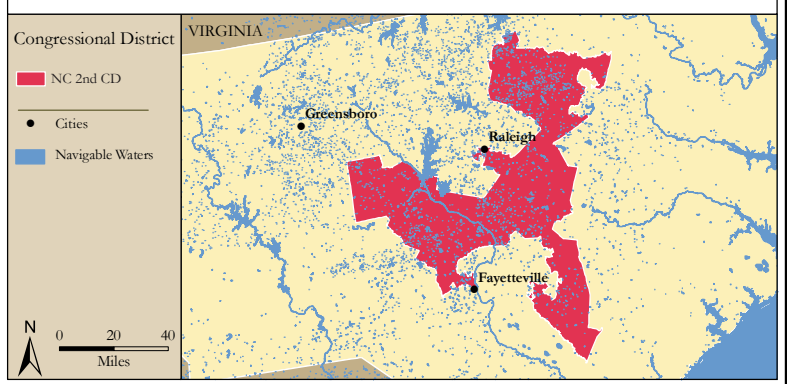


Figure 3. Number of Registered Boats by Zipcode within the North Carolina 2nd Congressional District

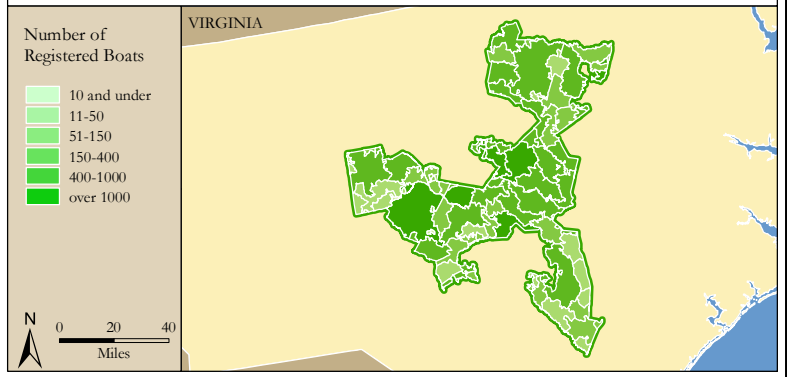
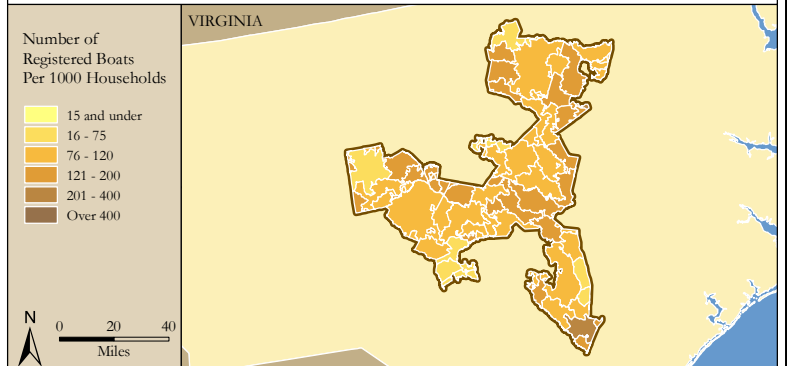


Figure 4. Per Capita (Household) Ownership of Registered Boats by Zipcode within the North Carolina 2nd Congressional District



Economic Significance of Boating

Table 1. Craft and Trip Expenses by Power and Sailboats Registered in the North Carolina 2nd Congressional District

Category	Boat Type and Size								Total
	Power <15'	Power 16' - 24'	Power 25' - 39'	Power 40'+	Sail <15'	Sail 16' - 24'	Sail 25' - 39'	Sail 40+	
Number of boats (Thousands of boats)	6.8	13.3	0.7	0.0	0.0	0.2	0.1	0.0	21.1
Annual craft spending (\$ per boat per year)	\$457.9	\$1,655.6	\$7,464.6	\$25,299.0	\$488.7	\$1,830.2	\$7,439.8	\$18,328.8	
Total craft spending (\$ Millions)	\$3.1	\$21.9	\$5.3	\$1.1	\$0.0	\$0.3	\$0.7	\$0.1	\$32.6
Total boat days (Thousands of days)	110.0	331.8	21.9	1.9	0.5	3.2	2.9	0.3	472.6
Total trip spending (\$ per boat per year)	\$935.9	\$2,148.4	\$4,574.4	\$8,039.6	\$1,009.7	\$1,009.7	\$1,963.9	\$5,204.7	
Total trip spending (\$ Millions)	\$6.3	\$28.5	\$3.3	\$0.3	\$0.0	\$0.2	\$0.2	\$0.0	\$38.8
Total craft & trip spending (\$ Millions)	\$9.4	\$50.4	\$8.6	\$1.4	\$0.0	\$0.5	\$0.9	\$0.2	\$71.4

Table 2. Total Spending on Boat Trips by Power and Sailboat Owners Registered in the North Carolina 2nd CD

Category	Total (\$ Millions)	Percentage
Lodging	\$1.6	4%
Marina services	\$3.0	8%
Restaurant	\$7.0	18%
Groceries	\$7.1	18%
Boat fuel	\$9.0	23%
Auto fuel	\$7.3	19%
Repair & Maintenance	-	-
Marine supplies	-	-
Recreation & Entertainment	\$1.6	4%
Shopping	\$1.2	3%
Other services	-	-
Other goods	\$1.0	3%
Total	\$38.8	100%

Table 3. Total Annual Craft Spending (not including purchases of boats) by Power and Sailboat Owners Registered in the North Carolina 2nd CD

Category	Total (\$ Millions)	Percentage
Slip	\$4.4	14%
Loan Payments	\$10.5	32%
Replacement Motors	\$0.5	1%
Replacement Trailers	\$0.1	0%
Insurance	\$3.0	9%
Repairs	\$6.5	20%
Accessories	\$6.3	19%
Taxes	\$1.4	4%
Total	\$32.6	100%

Table 4. Economic Significance of Trip Spending and Annual Craft Spending by Power and Sailboats Registered in the North Carolina 2nd CD

	Trip Spending	Annual Craft Spending	Total
Direct Effects			
Sales (\$ Millions)	\$32.7	\$20.4	\$53.1
Jobs	339.9	234.3	574.2
Labor Income (\$ Millions)	\$9.8	\$7.9	\$17.7
Value Added (\$ Millions)	\$15.7	\$13.2	\$28.9
Total Effects			
Sales (\$ Millions)	\$87.9	\$51.7	\$139.6
Jobs	724.0	465.1	1,189.2
Labor Income (\$ Millions)	\$26.9	\$18.3	\$45.1
Value Added (\$ Millions)	\$45.4	\$30.4	\$75.8

Table 5. Economic Significance of Power and Sailboats Registered in the North Carolina 2nd CD

Sector/Spending category	Sales (\$ Millions)	Jobs	Labor Income (\$Millions)	Value Added (\$Millions)
Direct Effects				
Lodging	\$1.6	20.2	\$0.7	\$1.2
Marina Services	\$7.4	95.5	\$2.6	\$4.7
Restaurant	\$7.0	138.7	\$2.4	\$3.4
Recreation & Entertainment	\$1.6	20.6	\$0.6	\$1.0
Repair & Maintenance	\$6.5	81.0	\$2.4	\$3.4
Insurance & Credit	\$3.7	26.6	\$1.6	\$3.4
Gas Service	\$3.6	43.2	\$1.7	\$2.8
Other Retail Trade	\$5.2	97.2	\$2.5	\$4.1
Wholesale Trade	\$3.5	22.2	\$1.5	\$2.6
Other Local Production of Goods	\$13.0	28.9	\$1.8	\$2.5
Total Direct Effects	\$53.1	574.2	\$17.7	\$28.9
Secondary Effects	\$86.5	614.9	\$27.4	\$46.9
Total Effects	\$139.6	1,189.2	\$45.1	\$75.8

The North Carolina 3rd Congressional District

Table 1. The North Carolina 3rd Congressional District Description

Area (square miles)	6,192
Navigable Waterbody (square miles)	2,003
Total Population (2007)	655,481
Population Density (per square mile) (2007)	102
Persons 18+ (2007)	494,724
Number of Households (2007)	257,759

Table 2. Registered Boats Owned by Residents Residing in the North Carolina 3rd Congressional District

	3rd CD	State Total
Number of Registered Boats	57,585	383,604
Type of Registered Boats		
Power Boats	50,164	322,452
Outboards	41,994	253,558
Inboards	2,487	13,679
Stern Drives	5,327	52,681
Jet Boats	356	2,534
Personal Watercraft	5,358	52,866
Sailboats	2,063	8,286
Size of Registered Boats		
≤ 15'	18,706	137,175
16'-24'	33,894	221,475
25'-39'	4,412	22,851
40' +	573	2,103
Per Capita Ownership of Registered Boats		
All Population	88/1000	43/1000
Persons 18 +	116/1000	57/1000
Households	223/1000	106/1000

Table 3. Boating-related Businesses Based on NAICS Codes

Category	3rd CD	State Total
Boat Building		
No. of Businesses	16	49
No. of Employees	1,010	1,646
Total Sales (\$ Millions)	\$162.1	\$215.7
Motors & Engines Mfg.		
No. of Businesses	1	1
No. of Employees	4	4
Total Sales (\$ Millions)	\$0.3	\$0.3
Accessories & Supplies Mfg.		
No. of Businesses	5	17
No. of Employees	8	165
Total Sales (\$ Millions)	\$0.6	\$12.3
Dealers & Wholesalers		
No. of Businesses	91	288
No. of Employees	362	1,734
Total Sales (\$ Millions)	\$62.4	\$413.9
Boating Services		
No. of Businesses	76	227
No. of Employees	379	1,022
Total Sales (\$ Millions)	\$31.6	\$303.5

Figure 1. Location of the North Carolina 3rd Congressional District



Figure 2. Navigable Waters of the North Carolina 3rd Congressional District

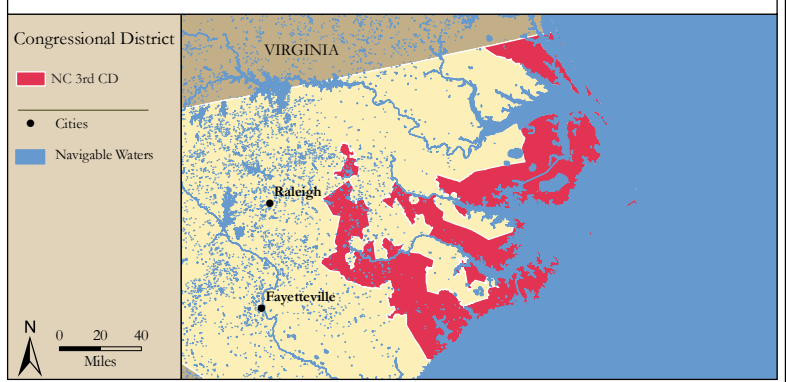


Figure 3. Number of Registered Boats by Zipcode within the North Carolina 3rd Congressional District

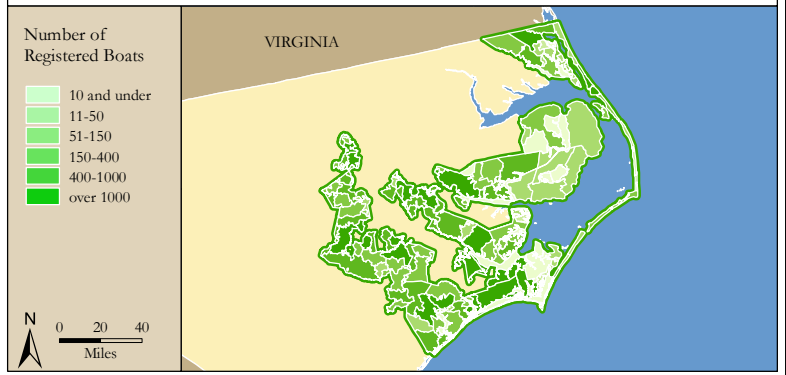
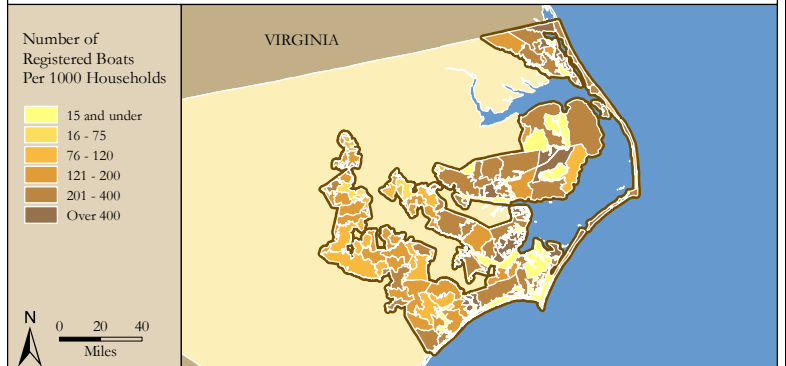


Figure 4. Per Capita (Household) Ownership of Registered Boats by Zipcode within the North Carolina 3rd Congressional District



Economic Significance of Boating

Table 1. Craft and Trip Expenses by Power and Sailboats Registered in the North Carolina 3rd Congressional District

Category	Boat Type and Size								Total
	Power <15'	Power 16' - 24'	Power 25' - 39'	Power 40'+	Sail <15'	Sail 16' - 24'	Sail 25' - 39'	Sail 40+	
Number of boats (Thousands of boats)	13.2	33.1	3.4	0.4	0.1	0.8	1.0	0.1	52.2
Annual craft spending (\$ per boat per year)	\$457.9	\$1,655.6	\$7,464.6	\$25,299.0	\$488.7	\$1,830.2	\$7,439.8	\$18,328.8	
Total craft spending (\$ Millions)	\$6.0	\$54.9	\$25.4	\$11.0	\$0.1	\$1.4	\$7.6	\$2.5	\$108.8
Total boat days (Thousands of days)	214.9	829.7	104.2	18.9	2.9	14.7	31.9	6.3	1,223.4
Total trip spending (\$ per boat per year)	\$935.9	\$2,148.4	\$4,574.4	\$8,039.6	\$1,009.7	\$1,009.7	\$1,963.9	\$5,204.7	
Total trip spending (\$ Millions)	\$12.4	\$71.2	\$15.5	\$3.5	\$0.2	\$0.8	\$2.0	\$0.7	\$106.2
Total craft & trip spending (\$ Millions)	\$18.4	\$126.0	\$40.9	\$14.5	\$0.2	\$2.2	\$9.5	\$3.3	\$215.0

Table 2. Total Spending on Boat Trips by Power and Sailboat Owners Registered in the North Carolina 3rd CD

Category	Total (\$ Millions)	Percentage
Lodging	\$4.1	4%
Marina services	\$8.9	8%
Restaurant	\$19.7	19%
Groceries	\$19.4	18%
Boat fuel	\$25.7	24%
Auto fuel	\$18.3	17%
Repair & Maintenance	-	-
Marine supplies	-	-
Recreation & Entertainment	\$4.2	4%
Shopping	\$3.2	3%
Other services	-	-
Other goods	\$2.6	2%
Total	\$106.2	100%

Table 3. Total Annual Craft Spending (not including purchases of boats) by Power and Sailboat Owners Registered in the North Carolina 3rd CD

Category	Total (\$ Millions)	Percentage
Slip	\$16.7	15%
Loan Payments	\$35.2	32%
Replacement Motors	\$1.2	1%
Replacement Trailers	\$0.3	0%
Insurance	\$9.5	9%
Repairs	\$21.6	20%
Accessories	\$20.0	18%
Taxes	\$4.3	4%
Total	\$108.8	100%

Table 4. Economic Significance of Trip Spending and Annual Craft Spending by Power and Sailboats Registered in the North Carolina 3rd CD

	Trip Spending	Annual Craft Spending	Total
Direct Effects			
Sales (\$ Millions)	\$90.6	\$68.3	\$158.9
Jobs	940.0	790.1	1,730.1
Labor Income (\$ Millions)	\$27.0	\$26.3	\$53.3
Value Added (\$ Millions)	\$43.2	\$44.1	\$87.3
Total Effects			
Sales (\$ Millions)	\$243.4	\$173.3	\$416.7
Jobs	2,001.4	1,565.3	3,566.7
Labor Income (\$ Millions)	\$74.2	\$61.1	\$135.3
Value Added (\$ Millions)	\$125.3	\$102.0	\$227.3

Table 5. Economic Significance of Power and Sailboats Registered in the North Carolina 3rd CD

Sector/Spending category	Sales (\$ Millions)	Jobs	Labor Income (\$Millions)	Value Added (\$Millions)
Direct Effects				
Lodging	\$4.1	51.3	\$1.6	\$2.9
Marina Services	\$25.6	329.1	\$9.0	\$16.1
Restaurant	\$19.7	390.2	\$6.7	\$9.5
Recreation & Entertainment	\$4.2	54.6	\$1.5	\$2.7
Repair & Maintenance	\$21.6	270.3	\$8.0	\$11.3
Insurance & Credit	\$11.8	85.4	\$5.1	\$10.8
Gas Service	\$9.8	116.7	\$4.7	\$7.5
Other Retail Trade	\$15.2	286.8	\$7.4	\$12.0
Wholesale Trade	\$9.9	63.2	\$4.2	\$7.5
Other Local Production of Goods	\$36.9	82.6	\$5.1	\$7.1
Total Direct Effects	\$158.9	1,730.1	\$53.3	\$87.3
Secondary Effects	\$257.7	1,836.6	\$82.0	\$140.0
Total Effects	\$416.7	3,566.7	\$135.3	\$227.3

The North Carolina 4th Congressional District

Table 1. The North Carolina 4th Congressional District Description

Area (square miles)	1,253
Navigable Waterbody (square miles)	60
Total Population (2007)	734,502
Population Density (per square mile) (2007)	566
Persons 18+ (2007)	546,577
Number of Households (2007)	289,166

Table 2. Registered Boats Owned by Residents Residing in the North Carolina 4th Congressional District

	4th CD	State Total
Number of Registered Boats	23,814	383,604
Type of Registered Boats		
Power Boats	18,813	322,452
Outboards	12,822	253,558
Inboards	1,162	13,679
Stern Drives	4,545	52,681
Jet Boats	284	2,534
Personal Watercraft	3,887	52,866
Sailboats	1,114	8,286
Size of Registered Boats		
≤ 15'	7,757	137,175
16'-24'	14,307	221,475
25'-39'	1,563	22,851
40' +	187	2,103
Per Capita Ownership of Registered Boats		
All Population	32/1000	43/1000
Persons 18 +	44/1000	57/1000
Households	82/1000	106/1000

Table 3. Boating-related Businesses Based on NAICS Codes

Category	4th CD	State Total
Boat Building		
No. of Businesses	1	49
No. of Employees	120	1,646
Total Sales (\$ Millions)	\$10.8	\$215.7
Motors & Engines Mfg.		
No. of Businesses	-	1
No. of Employees	-	4
Total Sales (\$ Millions)	-	\$0.3
Accessories & Supplies Mfg.		
No. of Businesses	-	17
No. of Employees	-	165
Total Sales (\$ Millions)	-	\$12.3
Dealers & Wholesalers		
No. of Businesses	6	288
No. of Employees	46	1,734
Total Sales (\$ Millions)	\$8.3	\$413.9
Boating Services		
No. of Businesses	8	227
No. of Employees	28	1,022
Total Sales (\$ Millions)	\$1.5	\$303.5

Figure 1. Location of the North Carolina 4th Congressional District



Figure 2. Navigable Waters of the North Carolina 4th Congressional District

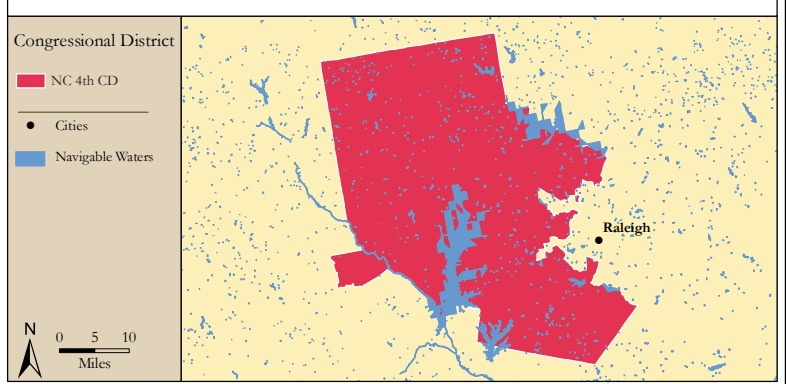


Figure 3. Number of Registered Boats by Zipcode within the North Carolina 4th Congressional District

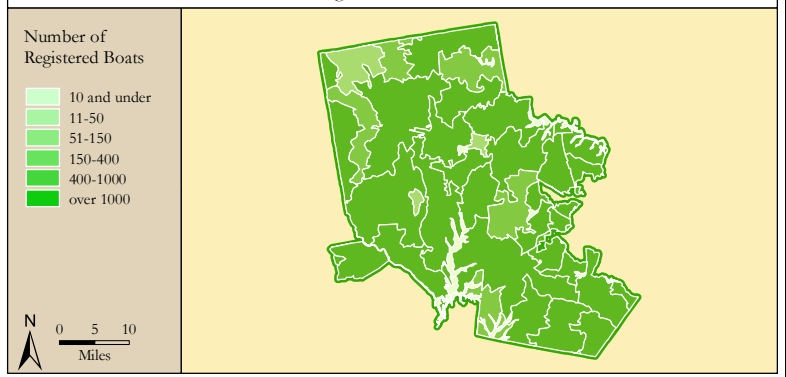
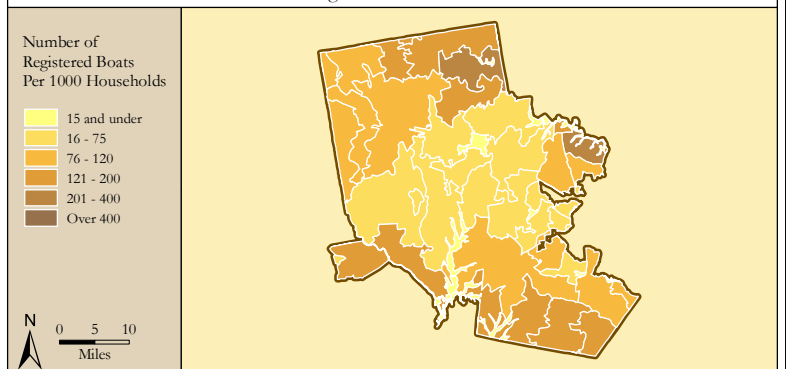


Figure 4. Per Capita (Household) Ownership of Registered Boats by Zipcode within the North Carolina 4th Congressional District



Economic Significance of Boating

Table 1. Craft and Trip Expenses by Power and Sailboats Registered in the North Carolina 4th Congressional District

Category	Boat Type and Size								Total
	Power <15'	Power 16' - 24'	Power 25' - 39'	Power 40'+	Sail <15'	Sail 16' - 24'	Sail 25' - 39'	Sail 40+	
Number of boats (Thousands of boats)	3.8	13.8	1.2	0.1	0.1	0.5	0.4	0.0	19.9
Annual craft spending (\$ per boat per year)	\$457.9	\$1,655.6	\$7,464.6	\$25,299.0	\$488.7	\$1,830.2	\$7,439.8	\$18,328.8	
Total craft spending (\$ Millions)	\$1.7	\$22.8	\$8.6	\$3.6	\$0.1	\$1.0	\$3.0	\$0.8	\$41.6
Total boat days (Thousands of days)	61.1	344.6	35.5	6.1	2.2	10.5	12.8	2.1	475.0
Total trip spending (\$ per boat per year)	\$935.9	\$2,148.4	\$4,574.4	\$8,039.6	\$1,009.7	\$1,009.7	\$1,963.9	\$5,204.7	
Total trip spending (\$ Millions)	\$3.5	\$29.6	\$5.3	\$1.1	\$0.1	\$0.6	\$0.8	\$0.2	\$41.2
Total craft & trip spending (\$ Millions)	\$5.2	\$52.4	\$13.9	\$4.7	\$0.2	\$1.5	\$3.8	\$1.1	\$82.8

Table 2. Total Spending on Boat Trips by Power and Sailboat Owners Registered in the North Carolina 4th CD

Category	Total (\$ Millions)	Percentage
Lodging	\$1.7	4%
Marina services	\$3.4	8%
Restaurant	\$7.6	19%
Groceries	\$7.6	18%
Boat fuel	\$9.9	24%
Auto fuel	\$7.2	18%
Repair & Maintenance	-	-
Marine supplies	-	-
Recreation & Entertainment	\$1.6	4%
Shopping	\$1.2	3%
Other services	-	-
Other goods	\$1.0	3%
Total	\$41.2	100%

Table 3. Total Annual Craft Spending (not including purchases of boats) by Power and Sailboat Owners Registered in the North Carolina 4th CD

Category	Total (\$ Millions)	Percentage
Slip	\$6.4	15%
Loan Payments	\$13.4	32%
Replacement Motors	\$0.5	1%
Replacement Trailers	\$0.1	0%
Insurance	\$3.6	9%
Repairs	\$8.3	20%
Accessories	\$7.7	18%
Taxes	\$1.7	4%
Total	\$41.6	100%

Table 4. Economic Significance of Trip Spending and Annual Craft Spending by Power and Sailboats Registered in the North Carolina 4th CD

	Trip Spending	Annual Craft Spending	Total
Direct Effects			
Sales (\$ Millions)	\$35.1	\$26.2	\$61.3
Jobs	364.5	303.2	667.7
Labor Income (\$ Millions)	\$10.5	\$10.1	\$20.6
Value Added (\$ Millions)	\$16.8	\$16.9	\$33.7
Total Effects			
Sales (\$ Millions)	\$94.3	\$66.5	\$160.8
Jobs	776.0	600.6	1,376.6
Labor Income (\$ Millions)	\$28.8	\$23.4	\$52.2
Value Added (\$ Millions)	\$48.6	\$39.1	\$87.7

Table 5. Economic Significance of Power and Sailboats Registered in the North Carolina 4th CD

Sector/Spending category	Sales (\$ Millions)	Jobs	Labor Income (\$Millions)	Value Added (\$Millions)
Direct Effects				
Lodging	\$1.7	20.6	\$0.7	\$1.2
Marina Services	\$9.8	125.7	\$3.4	\$6.2
Restaurant	\$7.6	151.5	\$2.6	\$3.7
Recreation & Entertainment	\$1.6	21.0	\$0.6	\$1.0
Repair & Maintenance	\$8.3	103.4	\$3.1	\$4.3
Insurance & Credit	\$4.5	32.6	\$1.9	\$4.1
Gas Service	\$3.8	45.2	\$1.8	\$2.9
Other Retail Trade	\$5.9	111.1	\$2.9	\$4.7
Wholesale Trade	\$3.8	24.5	\$1.6	\$2.9
Other Local Production of Goods	\$14.3	32.1	\$2.0	\$2.8
Total Direct Effects	\$61.3	667.7	\$20.6	\$33.7
Secondary Effects	\$99.5	708.9	\$31.6	\$54.0
Total Effects	\$160.8	1,376.6	\$52.2	\$87.7

The North Carolina 5th Congressional District

Table 1. The North Carolina 5th Congressional District Description

Area (square miles)	4,402
Navigable Waterbody (square miles)	24
Total Population (2007)	664,701
Population Density (per square mile) (2007)	150
Persons 18+ (2007)	513,516
Number of Households (2007)	269,148

Table 2. Registered Boats Owned by Residents Residing in the North Carolina 5th Congressional District

	5th CD	State Total
Number of Registered Boats	21,609	383,604
Type of Registered Boats		
Power Boats	17,972	322,452
Outboards	13,575	253,558
Inboards	701	13,679
Stern Drives	3,552	52,681
Jet Boats	144	2,534
Personal Watercraft	3,305	52,866
Sailboats	332	8,286
Size of Registered Boats		
≤ 15'	7,732	137,175
16'-24'	12,751	221,475
25'-39'	1,069	22,851
40' +	57	2,103
Per Capita Ownership of Registered Boats		
All Population	33/1000	43/1000
Persons 18 +	42/1000	57/1000
Households	80/1000	106/1000

Table 3. Boating-related Businesses Based on NAICS Codes

Category	5th CD	State Total
Boat Building		
No. of Businesses	2	49
No. of Employees	3	1,646
Total Sales (\$ Millions)	\$0.2	\$215.7
Motors & Engines Mfg.		
No. of Businesses	-	1
No. of Employees	-	4
Total Sales (\$ Millions)	-	\$0.3
Accessories & Supplies Mfg.		
No. of Businesses	-	17
No. of Employees	-	165
Total Sales (\$ Millions)	-	\$12.3
Dealers & Wholesalers		
No. of Businesses	7	288
No. of Employees	26	1,734
Total Sales (\$ Millions)	\$3.5	\$413.9
Boating Services		
No. of Businesses	8	227
No. of Employees	30	1,022
Total Sales (\$ Millions)	\$3.2	\$303.5

Figure 1. Location of the North Carolina 5th Congressional District

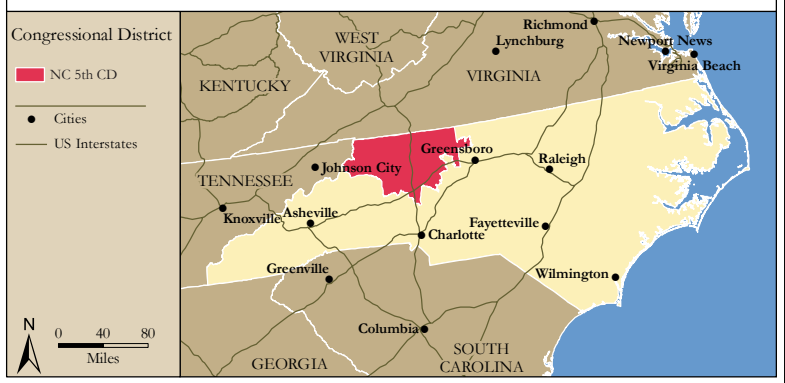


Figure 2. Navigable Waters of the North Carolina 5th Congressional District

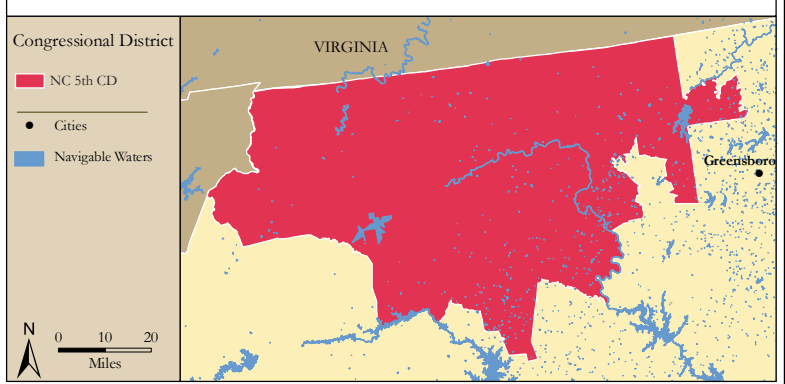


Figure 3. Number of Registered Boats by Zipcode within the North Carolina 5th Congressional District

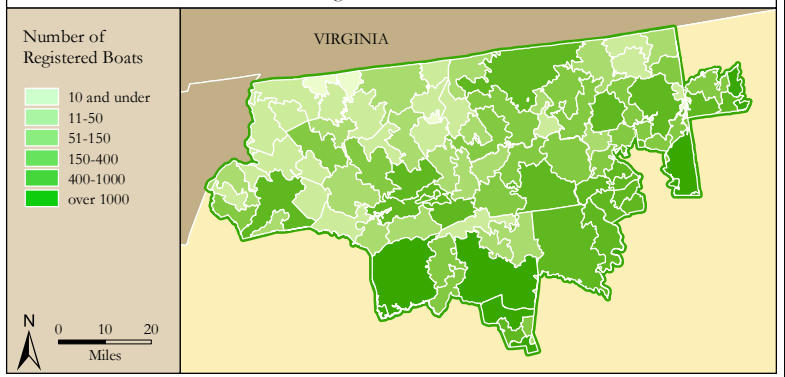
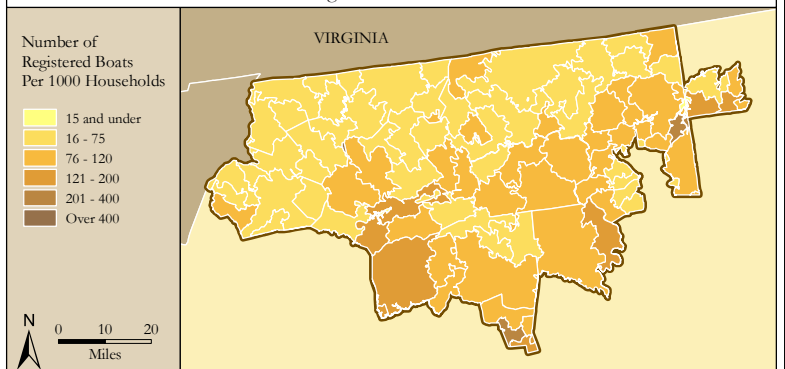


Figure 4. Per Capita (Household) Ownership of Registered Boats by Zipcode within the North Carolina 5th Congressional District



Economic Significance of Boating

Table 1. Craft and Trip Expenses by Power and Sailboats Registered in the North Carolina 5th Congressional District

Category	Boat Type and Size								Total
	Power <15'	Power 16' - 24'	Power 25' - 39'	Power 40'+	Sail <15'	Sail 16' - 24'	Sail 25' - 39'	Sail 40+	
Number of boats (Thousands of boats)	4.4	12.6	0.9	0.0	0.0	0.2	0.1	0.0	18.3
Annual craft spending (\$ per boat per year)	\$457.9	\$1,655.6	\$7,464.6	\$25,299.0	\$488.7	\$1,830.2	\$7,439.8	\$18,328.8	
Total craft spending (\$ Millions)	\$2.0	\$20.9	\$7.1	\$1.1	\$0.0	\$0.3	\$0.9	\$0.3	\$32.5
Total boat days (Thousands of days)	71.4	315.4	29.0	1.9	0.8	3.0	3.9	0.6	426.0
Total trip spending (\$ per boat per year)	\$935.9	\$2,148.4	\$4,574.4	\$8,039.6	\$1,009.7	\$1,009.7	\$1,963.9	\$5,204.7	
Total trip spending (\$ Millions)	\$4.1	\$27.1	\$4.3	\$0.3	\$0.0	\$0.2	\$0.2	\$0.1	\$36.4
Total craft & trip spending (\$ Millions)	\$6.1	\$47.9	\$11.4	\$1.4	\$0.1	\$0.4	\$1.2	\$0.3	\$68.8

Table 2. Total Spending on Boat Trips by Power and Sailboat Owners Registered in the North Carolina 5th CD

Category	Total (\$ Millions)	Percentage
Lodging	\$1.5	4%
Marina services	\$2.9	8%
Restaurant	\$6.6	18%
Groceries	\$6.7	18%
Boat fuel	\$8.7	24%
Auto fuel	\$6.6	18%
Repair & Maintenance	-	-
Marine supplies	-	-
Recreation & Entertainment	\$1.5	4%
Shopping	\$1.1	3%
Other services	-	-
Other goods	\$0.9	3%
Total	\$36.4	100%

Table 3. Total Annual Craft Spending (not including purchases of boats) by Power and Sailboat Owners Registered in the North Carolina 5th CD

Category	Total (\$ Millions)	Percentage
Slip	\$4.6	14%
Loan Payments	\$10.6	33%
Replacement Motors	\$0.4	1%
Replacement Trailers	\$0.1	0%
Insurance	\$2.9	9%
Repairs	\$6.4	20%
Accessories	\$6.1	19%
Taxes	\$1.3	4%
Total	\$32.5	100%

Table 4. Economic Significance of Trip Spending and Annual Craft Spending by Power and Sailboats Registered in the North Carolina 5th CD

	Trip Spending	Annual Craft Spending	Total
Direct Effects			
Sales (\$ Millions)	\$30.8	\$20.2	\$51.0
Jobs	318.6	232.8	551.4
Labor Income (\$ Millions)	\$9.2	\$7.8	\$17.0
Value Added (\$ Millions)	\$14.7	\$13.1	\$27.8
Total Effects			
Sales (\$ Millions)	\$82.7	\$51.3	\$134.0
Jobs	679.2	461.9	1,141.2
Labor Income (\$ Millions)	\$25.2	\$18.1	\$43.3
Value Added (\$ Millions)	\$42.6	\$30.2	\$72.8

Table 5. Economic Significance of Power and Sailboats Registered in the North Carolina 5th CD

Sector/Spending category	Sales (\$ Millions)	Jobs	Labor Income (\$Millions)	Value Added (\$Millions)
Direct Effects				
Lodging	\$1.5	18.7	\$0.6	\$1.1
Marina Services	\$7.4	95.4	\$2.6	\$4.7
Restaurant	\$6.6	130.9	\$2.2	\$3.2
Recreation & Entertainment	\$1.5	18.8	\$0.5	\$0.9
Repair & Maintenance	\$6.4	80.4	\$2.4	\$3.3
Insurance & Credit	\$3.6	26.1	\$1.6	\$3.3
Gas Service	\$3.4	40.5	\$1.6	\$2.6
Other Retail Trade	\$4.9	92.4	\$2.4	\$3.9
Wholesale Trade	\$3.3	21.0	\$1.4	\$2.5
Other Local Production of Goods	\$12.4	27.3	\$1.7	\$2.4
Total Direct Effects	\$51.0	551.4	\$17.0	\$27.8
Secondary Effects	\$82.9	589.8	\$26.3	\$45.0
Total Effects	\$134.0	1,141.2	\$43.3	\$72.8

The North Carolina 6th Congressional District

Table 1. The North Carolina 6th Congressional District Description

Area (square miles)	2,944
Navigable Waterbody (square miles)	46
Total Population (2007)	680,650
Population Density (per square mile) (2007)	228
Persons 18+ (2007)	520,965
Number of Households (2007)	264,689

Table 2. Registered Boats Owned by Residents Residing in the North Carolina 6th Congressional District

	6th CD	State Total
Number of Registered Boats	33,372	383,604
Type of Registered Boats		
Power Boats	27,085	322,452
Outboards	21,205	253,558
Inboards	1,236	13,679
Stern Drives	4,474	52,681
Jet Boats	170	2,534
Personal Watercraft	5,744	52,866
Sailboats	543	8,286
Size of Registered Boats		
≤ 15'	12,152	137,175
16'-24'	19,699	221,475
25'-39'	1,406	22,851
40' +	115	2,103
Per Capita Ownership of Registered Boats		
All Population	49/1000	43/1000
Persons 18 +	64/1000	57/1000
Households	126/1000	106/1000

Table 3. Boating-related Businesses Based on NAICS Codes

Category	6th CD	State Total
Boat Building		
No. of Businesses	-	49
No. of Employees	-	1,646
Total Sales (\$ Millions)	-	\$215.7
Motors & Engines Mfg.		
No. of Businesses	-	1
No. of Employees	-	4
Total Sales (\$ Millions)	-	\$0.3
Accessories & Supplies Mfg.		
No. of Businesses	-	17
No. of Employees	-	165
Total Sales (\$ Millions)	-	\$12.3
Dealers & Wholesalers		
No. of Businesses	15	288
No. of Employees	51	1,734
Total Sales (\$ Millions)	\$8.3	\$413.9
Boating Services		
No. of Businesses	9	227
No. of Employees	24	1,022
Total Sales (\$ Millions)	\$229.5	\$303.5

Figure 1. Location of the North Carolina 6th Congressional District



Figure 2. Navigable Waters of the North Carolina 6th Congressional District

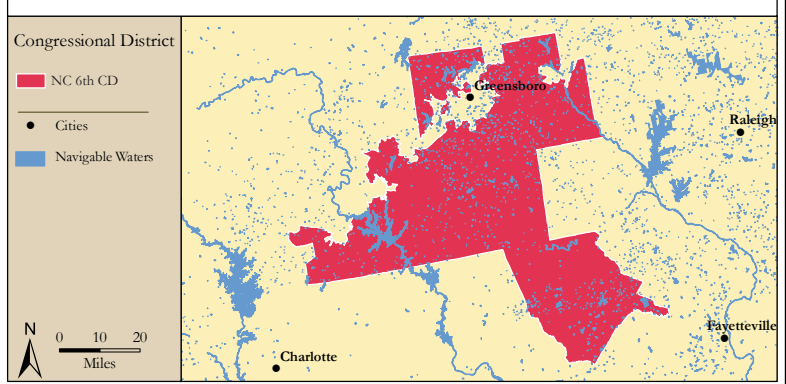


Figure 3. Number of Registered Boats by Zipcode within the North Carolina 6th Congressional District

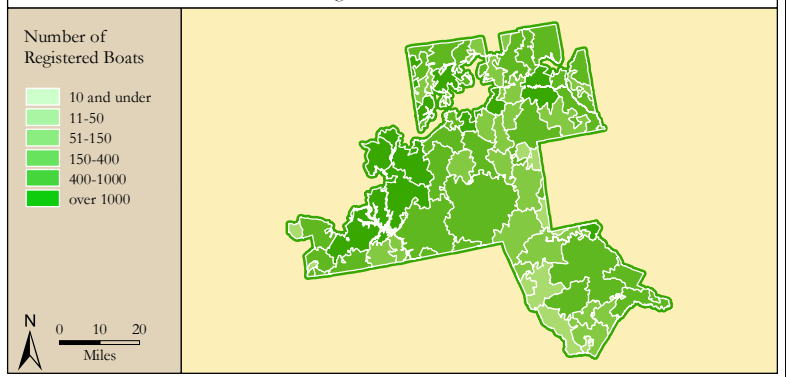
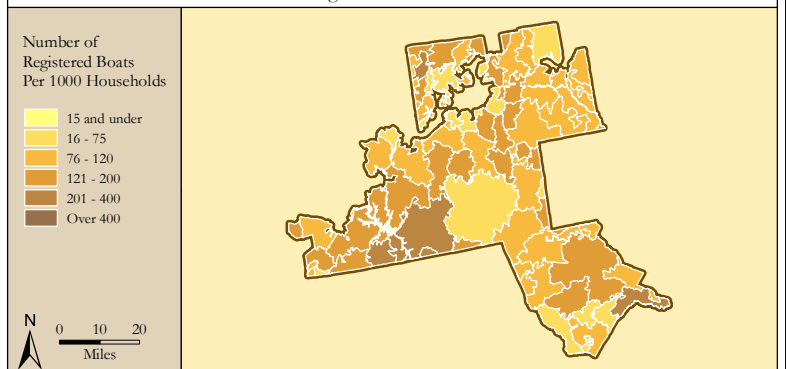


Figure 4. Per Capita (Household) Ownership of Registered Boats by Zipcode within the North Carolina 6th Congressional District



Economic Significance of Boating

Table 1. Craft and Trip Expenses by Power and Sailboats Registered in the North Carolina 6th Congressional District

Category	Boat Type and Size								Total
	Power <15'	Power 16' - 24'	Power 25' - 39'	Power 40'+	Sail <15'	Sail 16' - 24'	Sail 25' - 39'	Sail 40+	
Number of boats (Thousands of boats)	6.3	19.4	1.2	0.1	0.1	0.3	0.2	0.0	27.6
Annual craft spending (\$ per boat per year)	\$457.9	\$1,655.6	\$7,464.6	\$25,299.0	\$488.7	\$1,830.2	\$7,439.8	\$18,328.8	
Total craft spending (\$ Millions)	\$2.9	\$32.1	\$9.1	\$2.6	\$0.0	\$0.5	\$1.4	\$0.2	\$48.9
Total boat days (Thousands of days)	103.3	486.1	37.5	4.4	1.2	5.5	5.8	0.6	644.4
Total trip spending (\$ per boat per year)	\$935.9	\$2,148.4	\$4,574.4	\$8,039.6	\$1,009.7	\$1,009.7	\$1,963.9	\$5,204.7	
Total trip spending (\$ Millions)	\$5.9	\$41.7	\$5.6	\$0.8	\$0.1	\$0.3	\$0.4	\$0.1	\$54.8
Total craft & trip spending (\$ Millions)	\$8.8	\$73.9	\$14.7	\$3.4	\$0.1	\$0.8	\$1.7	\$0.3	\$103.7

Table 2. Total Spending on Boat Trips by Power and Sailboat Owners Registered in the North Carolina 6th CD

Category	Total (\$ Millions)	Percentage
Lodging	\$2.3	4%
Marina services	\$4.3	8%
Restaurant	\$9.9	18%
Groceries	\$10.1	18%
Boat fuel	\$13.0	24%
Auto fuel	\$10.0	18%
Repair & Maintenance	-	-
Marine supplies	-	-
Recreation & Entertainment	\$2.2	4%
Shopping	\$1.6	3%
Other services	-	-
Other goods	\$1.4	3%
Total	\$54.8	100%

Table 3. Total Annual Craft Spending (not including purchases of boats) by Power and Sailboat Owners Registered in the North Carolina 6th CD

Category	Total (\$ Millions)	Percentage
Slip	\$6.8	14%
Loan Payments	\$16.0	33%
Replacement Motors	\$0.6	1%
Replacement Trailers	\$0.1	0%
Insurance	\$4.4	9%
Repairs	\$9.7	20%
Accessories	\$9.2	19%
Taxes	\$2.0	4%
Total	\$48.9	100%

Table 4. Economic Significance of Trip Spending and Annual Craft Spending by Power and Sailboats Registered in the North Carolina 6th CD

	Trip Spending	Annual Craft Spending	Total
Direct Effects			
Sales (\$ Millions)	\$46.4	\$30.4	\$76.8
Jobs	480.3	350.1	830.4
Labor Income (\$ Millions)	\$13.9	\$11.8	\$25.6
Value Added (\$ Millions)	\$22.2	\$19.7	\$41.9
Total Effects			
Sales (\$ Millions)	\$124.6	\$77.1	\$201.8
Jobs	1,024.1	694.7	1,718.8
Labor Income (\$ Millions)	\$38.0	\$27.2	\$65.3
Value Added (\$ Millions)	\$64.3	\$45.4	\$109.7

Table 5. Economic Significance of Power and Sailboats Registered in the North Carolina 6th CD

Sector/Spending category	Sales (\$ Millions)	Jobs	Labor Income (\$Millions)	Value Added (\$Millions)
Direct Effects				
Lodging	\$2.3	28.5	\$0.9	\$1.6
Marina Services	\$11.1	142.9	\$3.9	\$7.0
Restaurant	\$9.9	197.0	\$3.4	\$4.8
Recreation & Entertainment	\$2.2	28.3	\$0.8	\$1.4
Repair & Maintenance	\$9.7	120.8	\$3.6	\$5.0
Insurance & Credit	\$5.4	39.4	\$2.3	\$5.0
Gas Service	\$5.1	61.1	\$2.5	\$3.9
Other Retail Trade	\$7.4	139.4	\$3.6	\$5.9
Wholesale Trade	\$4.9	31.7	\$2.1	\$3.8
Other Local Production of Goods	\$18.6	41.2	\$2.5	\$3.6
Total Direct Effects	\$76.8	830.4	\$25.6	\$41.9
Secondary Effects	\$124.9	888.4	\$39.6	\$67.8
Total Effects	\$201.8	1,718.8	\$65.3	\$109.7

The North Carolina 7th Congressional District

Table 1. The North Carolina 7th Congressional District Description

Area (square miles)	6,087
Navigable Waterbody (square miles)	1,252
Total Population (2007)	690,940
Population Density (per square mile) (2007)	112
Persons 18+ (2007)	525,911
Number of Households (2007)	282,195

Table 2. Registered Boats Owned by Residents Residing in the North Carolina 7th Congressional District

	7th CD	State Total
Number of Registered Boats	45,676	383,604
Type of Registered Boats		
Power Boats	41,379	322,452
Outboards	36,038	253,558
Inboards	1,587	13,679
Stern Drives	3,561	52,681
Jet Boats	193	2,534
Personal Watercraft	3,555	52,866
Sailboats	742	8,286
Size of Registered Boats		
≤ 15'	18,078	137,175
16'-24'	24,396	221,475
25'-39'	2,868	22,851
40' +	334	2,103
Per Capita Ownership of Registered Boats		
All Population	66/1000	43/1000
Persons 18 +	87/1000	57/1000
Households	162/1000	106/1000

Table 3. Boating-related Businesses Based on NAICS Codes

Category	7th CD	State Total
Boat Building		
No. of Businesses	14	49
No. of Employees	147	1,646
Total Sales (\$ Millions)	\$14.3	\$215.7
Motors & Engines Mfg.		
No. of Businesses	-	1
No. of Employees	-	4
Total Sales (\$ Millions)	-	\$0.3
Accessories & Supplies Mfg.		
No. of Businesses	-	17
No. of Employees	-	165
Total Sales (\$ Millions)	-	\$12.3
Dealers & Wholesalers		
No. of Businesses	38	288
No. of Employees	424	1,734
Total Sales (\$ Millions)	\$84.4	\$413.9
Boating Services		
No. of Businesses	46	227
No. of Employees	212	1,022
Total Sales (\$ Millions)	\$12.3	\$303.5

Figure 1. Location of North Carolina 7th Congressional District



Figure 2. Navigable Waters of North Carolina 7th Congressional District

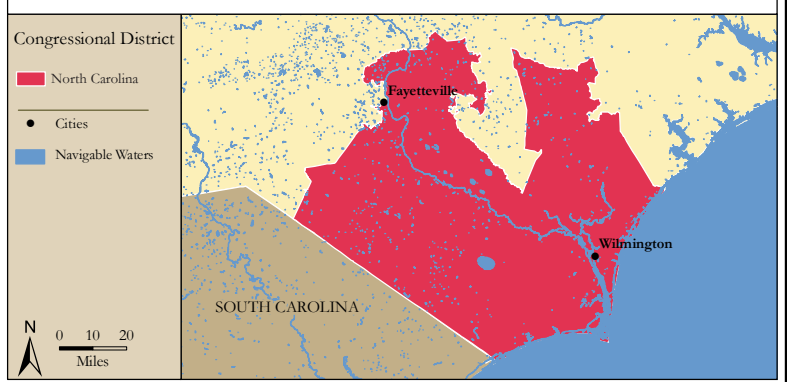


Figure 3. Number of Registered Boats by Zipcode within North Carolina 7th Congressional District

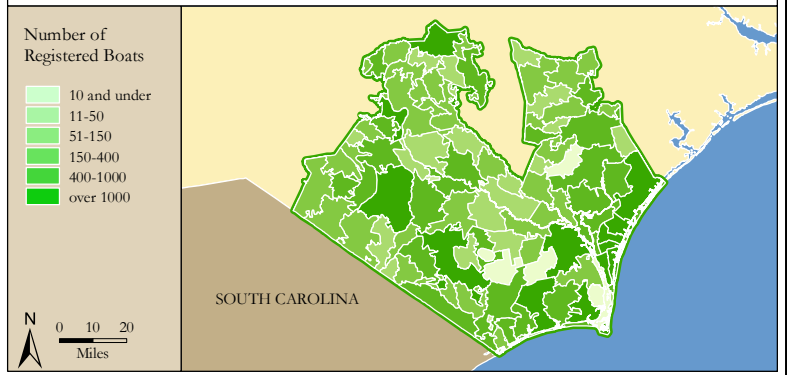
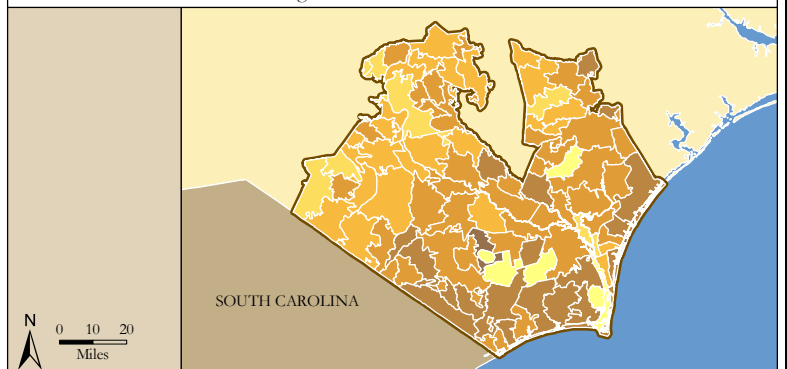


Figure 4. Per Capita (Household) Ownership of Registered Boats by Zipcode within North Carolina 7th Congressional District



Economic Significance of Boating

Table 1. Craft and Trip Expenses by Power and Sailboats Registered in the North Carolina 7th Congressional District

Category	Boat Type and Size								Total
	Power <15'	Power 16' - 24'	Power 25' - 39'	Power 40'+	Sail <15'	Sail 16' - 24'	Sail 25' - 39'	Sail 40+	
Number of boats (Thousands of boats)	14.5	24.1	2.5	0.3	0.1	0.3	0.4	0.1	42.1
Annual craft spending (\$ per boat per year)	\$457.9	\$1,655.6	\$7,464.6	\$25,299.0	\$488.7	\$1,830.2	\$7,439.8	\$18,328.8	
Total craft spending (\$ Millions)	\$6.6	\$40.0	\$18.7	\$7.0	\$0.0	\$0.5	\$2.7	\$1.0	\$76.5
Total boat days (Thousands of days)	235.3	604.4	77.0	12.0	1.4	5.0	11.2	2.6	948.9
Total trip spending (\$ per boat per year)	\$935.9	\$2,148.4	\$4,574.4	\$8,039.6	\$1,009.7	\$1,009.7	\$1,963.9	\$5,204.7	
Total trip spending (\$ Millions)	\$13.5	\$51.9	\$11.5	\$2.2	\$0.1	\$0.3	\$0.7	\$0.3	\$80.4
Total craft & trip spending (\$ Millions)	\$20.1	\$91.8	\$30.2	\$9.2	\$0.1	\$0.7	\$3.4	\$1.3	\$157.0

Table 2. Total Spending on Boat Trips by Power and Sailboat Owners Registered in the North Carolina 7th CD

Category	Total (\$ Millions)	Percentage
Lodging	\$3.1	4%
Marina services	\$6.7	8%
Restaurant	\$14.7	18%
Groceries	\$14.5	18%
Boat fuel	\$19.4	24%
Auto fuel	\$14.2	18%
Repair & Maintenance	-	-
Marine supplies	-	-
Recreation & Entertainment	\$3.3	4%
Shopping	\$2.4	3%
Other services	-	-
Other goods	\$2.0	2%
Total	\$80.4	100%

Table 3. Total Annual Craft Spending (not including purchases of boats) by Power and Sailboat Owners Registered in the North Carolina 7th CD

Category	Total (\$ Millions)	Percentage
Slip	\$11.1	15%
Loan Payments	\$24.9	33%
Replacement Motors	\$0.9	1%
Replacement Trailers	\$0.2	0%
Insurance	\$6.8	9%
Repairs	\$15.2	20%
Accessories	\$14.2	19%
Taxes	\$3.1	4%
Total	\$76.5	100%

Table 4. Economic Significance of Trip Spending and Annual Craft Spending by Power and Sailboats Registered in the North Carolina 7th CD

	Trip Spending	Annual Craft Spending	Total
Direct Effects			
Sales (\$ Millions)	\$68.4	\$47.8	\$116.2
Jobs	708.8	551.0	1,259.8
Labor Income (\$ Millions)	\$20.4	\$18.5	\$38.9
Value Added (\$ Millions)	\$32.7	\$30.9	\$63.6
Total Effects			
Sales (\$ Millions)	\$183.7	\$121.2	\$304.8
Jobs	1,509.6	1,092.6	2,602.2
Labor Income (\$ Millions)	\$56.0	\$42.8	\$98.8
Value Added (\$ Millions)	\$94.6	\$71.4	\$166.0

Table 5. Economic Significance of Power and Sailboats Registered in the North Carolina 7th CD

Sector/Spending category	Sales (\$ Millions)	Jobs	Labor Income (\$Millions)	Value Added (\$Millions)
Direct Effects				
Lodging	\$3.1	38.7	\$1.2	\$2.2
Marina Services	\$17.8	228.8	\$6.2	\$11.2
Restaurant	\$14.7	292.1	\$5.0	\$7.1
Recreation & Entertainment	\$3.3	42.3	\$1.2	\$2.1
Repair & Maintenance	\$15.2	189.7	\$5.6	\$7.9
Insurance & Credit	\$8.5	61.2	\$3.6	\$7.7
Gas Service	\$7.5	89.1	\$3.6	\$5.7
Other Retail Trade	\$11.2	209.9	\$5.4	\$8.8
Wholesale Trade	\$7.3	47.0	\$3.2	\$5.6
Other Local Production of Goods	\$27.6	61.1	\$3.8	\$5.3
Total Direct Effects	\$116.2	1,259.8	\$38.9	\$63.6
Secondary Effects	\$188.6	1,342.4	\$59.9	\$102.4
Total Effects	\$304.8	2,602.2	\$98.8	\$166.0

The North Carolina 8th Congressional District

Table 1. The North Carolina 8th Congressional District Description

Area (square miles)	3,283
Navigable Waterbody (square miles)	75
Total Population (2007)	675,357
Population Density (per square mile) (2007)	204
Persons 18+ (2007)	499,157
Number of Households (2007)	262,063

Table 2. Registered Boats Owned by Residents Residing in the North Carolina 8th Congressional District

	8th CD	State Total
Number of Registered Boats	20,943	383,604
Type of Registered Boats		
Power Boats	17,525	322,452
Outboards	14,337	253,558
Inboards	467	13,679
Stern Drives	2,618	52,681
Jet Boats	103	2,534
Personal Watercraft	3,182	52,866
Sailboats	236	8,286
Size of Registered Boats		
≤ 15'	8,451	137,175
16'-24'	11,610	221,475
25'-39'	835	22,851
40' +	47	2,103
Per Capita Ownership of Registered Boats		
All Population	31/1000	43/1000
Persons 18 +	42/1000	57/1000
Households	80/1000	106/1000

Table 3. Boating-related Businesses Based on NAICS Codes

Category	8th CD	State Total
Boat Building		
No. of Businesses	1	49
No. of Employees	1	1,646
Total Sales (\$ Millions)	\$0.1	\$215.7
Motors & Engines Mfg.		
No. of Businesses	-	1
No. of Employees	-	4
Total Sales (\$ Millions)	-	\$0.3
Accessories & Supplies Mfg.		
No. of Businesses	1	17
No. of Employees	10	165
Total Sales (\$ Millions)	\$1.4	\$12.3
Dealers & Wholesalers		
No. of Businesses	9	288
No. of Employees	28	1,734
Total Sales (\$ Millions)	\$3.6	\$413.9
Boating Services		
No. of Businesses	5	227
No. of Employees	9	1,022
Total Sales (\$ Millions)	\$0.4	\$303.5

Figure 1. Location of the North Carolina 8th Congressional District



Figure 2. Navigable Waters of the North Carolina 8th Congressional District

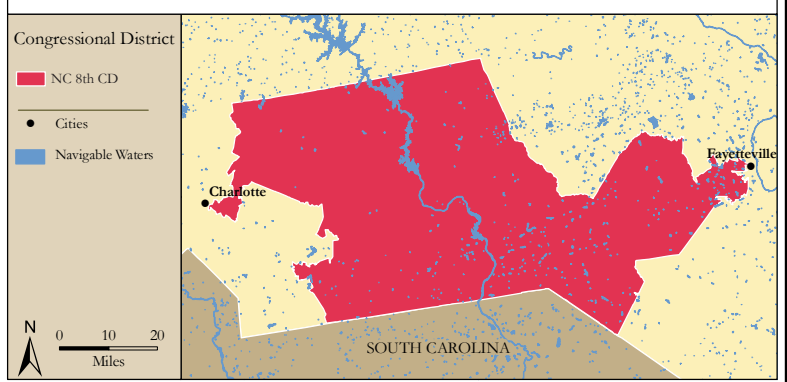


Figure 3. Number of Registered Boats by Zipcode within the North Carolina 8th Congressional District

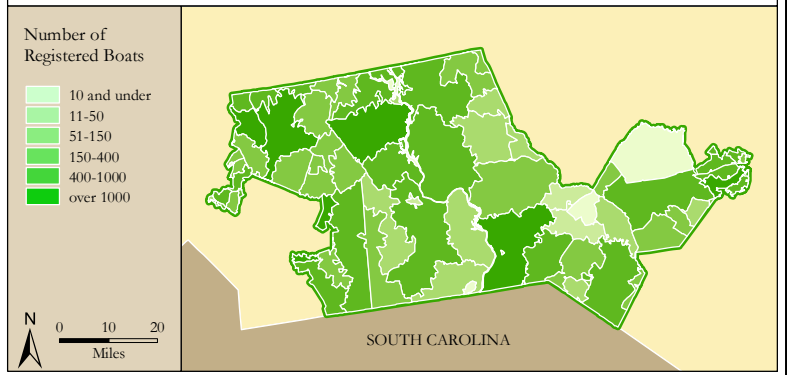
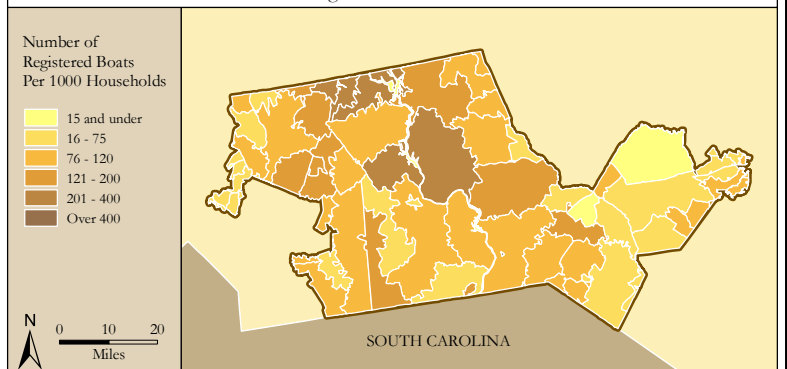


Figure 4. Per Capita (Household) Ownership of Registered Boats by Zipcode within the North Carolina 8th Congressional District



Economic Significance of Boating

Table 1. Craft and Trip Expenses by Power and Sailboats Registered in the North Carolina 8th Congressional District

Category	Boat Type and Size								Total
	Power <15'	Power 16' - 24'	Power 25' - 39'	Power 40'+	Sail <15'	Sail 16' - 24'	Sail 25' - 39'	Sail 40+	
Number of boats (Thousands of boats)	5.2	11.5	0.7	0.0	0.0	0.1	0.1	0.0	17.8
Annual craft spending (\$ per boat per year)	\$457.9	\$1,655.6	\$7,464.6	\$25,299.0	\$488.7	\$1,830.2	\$7,439.8	\$18,328.8	
Total craft spending (\$ Millions)	\$2.4	\$19.0	\$5.6	\$0.9	\$0.0	\$0.2	\$0.6	\$0.2	\$29.0
Total boat days (Thousands of days)	85.3	288.0	22.9	1.6	0.6	2.1	2.7	0.5	403.7
Total trip spending (\$ per boat per year)	\$935.9	\$2,148.4	\$4,574.4	\$8,039.6	\$1,009.7	\$1,009.7	\$1,963.9	\$5,204.7	
Total trip spending (\$ Millions)	\$4.9	\$24.7	\$3.4	\$0.3	\$0.0	\$0.1	\$0.2	\$0.1	\$33.7
Total craft & trip spending (\$ Millions)	\$7.3	\$43.7	\$9.0	\$1.2	\$0.0	\$0.3	\$0.8	\$0.2	\$62.7

Table 2. Total Spending on Boat Trips by Power and Sailboat Owners Registered in the North Carolina 8th CD

Category	Total (\$ Millions)	Percentage
Lodging	\$1.4	4%
Marina services	\$2.6	8%
Restaurant	\$6.1	18%
Groceries	\$6.2	18%
Boat fuel	\$7.9	24%
Auto fuel	\$6.2	19%
Repair & Maintenance	-	-
Marine supplies	-	-
Recreation & Entertainment	\$1.4	4%
Shopping	\$1.0	3%
Other services	-	-
Other goods	\$0.8	3%
Total	\$33.7	100%

Table 3. Total Annual Craft Spending (not including purchases of boats) by Power and Sailboat Owners Registered in the North Carolina 8th CD

Category	Total (\$ Millions)	Percentage
Slip	\$4.0	14%
Loan Payments	\$9.4	32%
Replacement Motors	\$0.4	1%
Replacement Trailers	\$0.1	0%
Insurance	\$2.6	9%
Repairs	\$5.8	20%
Accessories	\$5.5	19%
Taxes	\$1.2	4%
Total	\$29.0	100%

Table 4. Economic Significance of Trip Spending and Annual Craft Spending by Power and Sailboats Registered in the North Carolina 8th CD

	Trip Spending	Annual Craft Spending	Total
Direct Effects			
Sales (\$ Millions)	\$28.5	\$18.1	\$46.6
Jobs	295.1	208.1	503.1
Labor Income (\$ Millions)	\$8.5	\$7.0	\$15.5
Value Added (\$ Millions)	\$13.6	\$11.7	\$25.4
Total Effects			
Sales (\$ Millions)	\$76.5	\$45.9	\$122.3
Jobs	628.8	413.0	1,041.8
Labor Income (\$ Millions)	\$23.4	\$16.2	\$39.6
Value Added (\$ Millions)	\$39.4	\$27.0	\$66.5

Table 5. Economic Significance of Power and Sailboats Registered in the North Carolina 8th CD

Sector/Spending category	Sales (\$ Millions)	Jobs	Labor Income (\$Millions)	Value Added (\$Millions)
Direct Effects				
Lodging	\$1.4	17.4	\$0.6	\$1.0
Marina Services	\$6.6	85.1	\$2.3	\$4.2
Restaurant	\$6.1	120.7	\$2.1	\$2.9
Recreation & Entertainment	\$1.4	17.7	\$0.5	\$0.9
Repair & Maintenance	\$5.8	71.9	\$2.1	\$3.0
Insurance & Credit	\$3.2	23.5	\$1.4	\$3.0
Gas Service	\$3.2	37.5	\$1.5	\$2.4
Other Retail Trade	\$4.5	84.8	\$2.2	\$3.6
Wholesale Trade	\$3.0	19.3	\$1.3	\$2.3
Other Local Production of Goods	\$11.4	25.2	\$1.5	\$2.2
Total Direct Effects	\$46.6	503.1	\$15.5	\$25.4
Secondary Effects	\$75.8	538.7	\$24.0	\$41.1
Total Effects	\$122.3	1,041.8	\$39.6	\$66.5

The North Carolina 9th Congressional District

Table 1. The North Carolina 9th Congressional District Description

Area (square miles)	991
Navigable Waterbody (square miles)	29
Total Population (2007)	760,549
Population Density (per square mile) (2007)	747
Persons 18+ (2007)	564,037
Number of Households (2007)	298,052

Table 2. Registered Boats Owned by Residents Residing in the North Carolina 9th Congressional District

	9th CD	State Total
Number of Registered Boats	27,943	383,604
Type of Registered Boats		
Power Boats	22,023	322,452
Outboards	13,203	253,558
Inboards	1,180	13,679
Stern Drives	7,385	52,681
Jet Boats	255	2,534
Personal Watercraft	5,237	52,866
Sailboats	683	8,286
Size of Registered Boats		
≤ 15'	8,880	137,175
16'-24'	16,136	221,475
25'-39'	2,757	22,851
40' +	170	2,103
Per Capita Ownership of Registered Boats		
All Population	37/1000	43/1000
Persons 18 +	50/1000	57/1000
Households	94/1000	106/1000

Table 3. Boating-related Businesses Based on NAICS Codes

Category	9th CD	State Total
Boat Building		
No. of Businesses	1	49
No. of Employees	7	1,646
Total Sales (\$ Millions)	\$0.5	\$215.7
Motors & Engines Mfg.		
No. of Businesses	-	1
No. of Employees	-	4
Total Sales (\$ Millions)	-	\$0.3
Accessories & Supplies Mfg.		
No. of Businesses	-	17
No. of Employees	-	165
Total Sales (\$ Millions)	-	\$12.3
Dealers & Wholesalers		
No. of Businesses	20	288
No. of Employees	277	1,734
Total Sales (\$ Millions)	\$135.2	\$413.9
Boating Services		
No. of Businesses	18	227
No. of Employees	111	1,022
Total Sales (\$ Millions)	\$8.3	\$303.5

Figure 1. Location of the North Carolina 9th Congressional District



Figure 2. Navigable Waters of the North Carolina 9th Congressional District

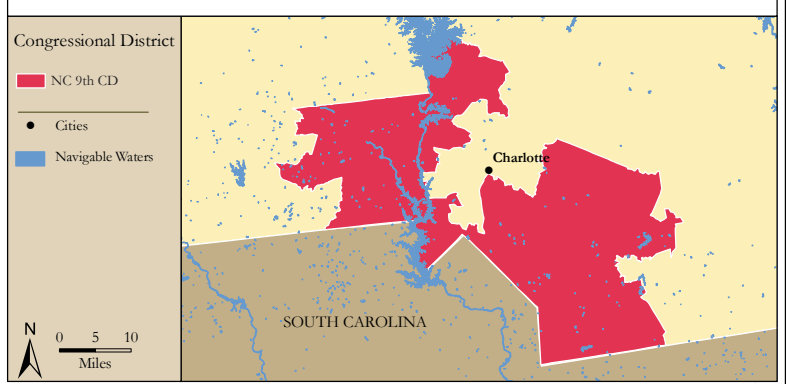


Figure 3. Number of Registered Boats by Zipcode within the North Carolina 9th Congressional District

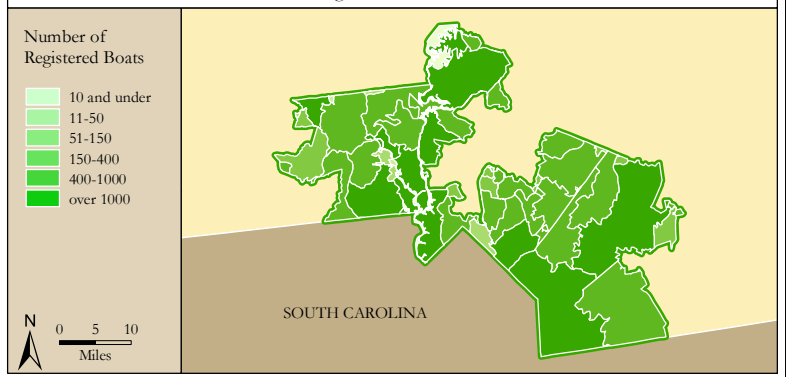
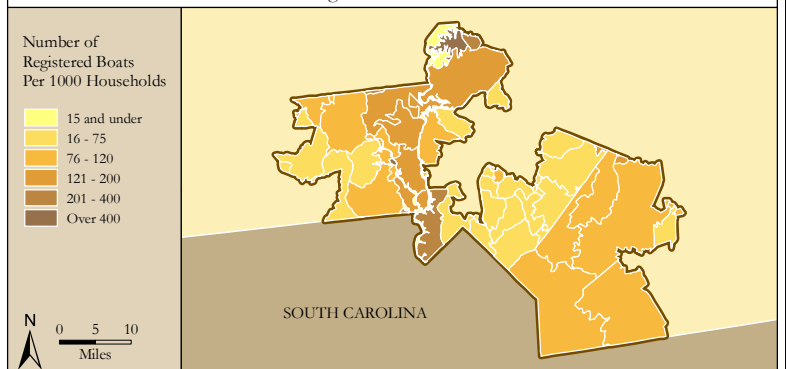


Figure 4. Per Capita (Household) Ownership of Registered Boats by Zipcode within the North Carolina 9th Congressional District



Economic Significance of Boating

Table 1. Craft and Trip Expenses by Power and Sailboats Registered in the North Carolina 9th Congressional District

Category	Boat Type and Size								Total
	Power <15'	Power 16' - 24'	Power 25' - 39'	Power 40'+	Sail <15'	Sail 16' - 24'	Sail 25' - 39'	Sail 40+	
Number of boats (Thousands of boats)	3.6	15.8	2.5	0.2	0.1	0.3	0.3	0.0	22.7
Annual craft spending (\$ per boat per year)	\$457.9	\$1,655.6	\$7,464.6	\$25,299.0	\$488.7	\$1,830.2	\$7,439.8	\$18,328.8	
Total craft spending (\$ Millions)	\$1.6	\$26.2	\$18.5	\$3.8	\$0.0	\$0.6	\$2.1	\$0.4	\$53.2
Total boat days (Thousands of days)	58.1	396.4	75.8	6.5	1.4	5.9	9.0	0.9	554.0
Total trip spending (\$ per boat per year)	\$935.9	\$2,148.4	\$4,574.4	\$8,039.6	\$1,009.7	\$1,009.7	\$1,963.9	\$5,204.7	
Total trip spending (\$ Millions)	\$3.3	\$34.0	\$11.3	\$1.2	\$0.1	\$0.3	\$0.6	\$0.1	\$50.9
Total craft & trip spending (\$ Millions)	\$5.0	\$60.2	\$29.8	\$5.0	\$0.1	\$0.9	\$2.7	\$0.5	\$104.1

Table 2. Total Spending on Boat Trips by Power and Sailboat Owners Registered in the North Carolina 9th CD

Category	Total (\$ Millions)	Percentage
Lodging	\$1.9	4%
Marina services	\$4.3	8%
Restaurant	\$9.5	19%
Groceries	\$9.1	18%
Boat fuel	\$13.1	26%
Auto fuel	\$8.4	16%
Repair & Maintenance	-	-
Marine supplies	-	-
Recreation & Entertainment	\$2.0	4%
Shopping	\$1.4	3%
Other services	-	-
Other goods	\$1.2	2%
Total	\$50.9	100%

Table 3. Total Annual Craft Spending (not including purchases of boats) by Power and Sailboat Owners Registered in the North Carolina 9th CD

Category	Total (\$ Millions)	Percentage
Slip	\$8.1	15%
Loan Payments	\$17.8	33%
Replacement Motors	\$0.6	1%
Replacement Trailers	\$0.1	0%
Insurance	\$4.6	9%
Repairs	\$10.4	20%
Accessories	\$9.5	18%
Taxes	\$2.1	4%
Total	\$53.2	100%

Table 4. Economic Significance of Trip Spending and Annual Craft Spending by Power and Sailboats Registered in the North Carolina 9th CD

	Trip Spending	Annual Craft Spending	Total
Direct Effects			
Sales (\$ Millions)	\$43.7	\$32.9	\$76.6
Jobs	448.8	380.2	829.0
Labor Income (\$ Millions)	\$12.9	\$12.7	\$25.6
Value Added (\$ Millions)	\$20.7	\$21.3	\$41.9
Total Effects			
Sales (\$ Millions)	\$117.2	\$83.4	\$200.6
Jobs	957.9	753.4	1,711.4
Labor Income (\$ Millions)	\$35.6	\$29.4	\$65.0
Value Added (\$ Millions)	\$60.2	\$49.1	\$109.3

Table 5. Economic Significance of Power and Sailboats Registered in the North Carolina 9th CD

Sector/Spending category	Sales (\$ Millions)	Jobs	Labor Income (\$Millions)	Value Added (\$Millions)
Direct Effects				
Lodging	\$1.9	23.8	\$0.8	\$1.4
Marina Services	\$12.4	159.3	\$4.3	\$7.8
Restaurant	\$9.5	187.4	\$3.2	\$4.5
Recreation & Entertainment	\$2.0	25.1	\$0.7	\$1.2
Repair & Maintenance	\$10.4	130.5	\$3.9	\$5.4
Insurance & Credit	\$5.8	41.5	\$2.5	\$5.3
Gas Service	\$4.8	56.8	\$2.3	\$3.6
Other Retail Trade	\$7.2	135.4	\$3.5	\$5.7
Wholesale Trade	\$4.7	30.2	\$2.0	\$3.6
Other Local Production of Goods	\$18.0	39.1	\$2.4	\$3.4
Total Direct Effects	\$76.6	829.0	\$25.6	\$41.9
Secondary Effects	\$124.0	882.4	\$39.4	\$67.4
Total Effects	\$200.6	1,711.4	\$65.0	\$109.3

The North Carolina 10th Congressional District

Table 1. The North Carolina 10th Congressional District Description

Area (square miles)	3,302
Navigable Waterbody (square miles)	60
Total Population (2007)	669,614
Population Density (per square mile) (2007)	199
Persons 18+ (2007)	513,154
Number of Households (2007)	260,295

Table 2. Registered Boats Owned by Residents Residing in the North Carolina 10th Congressional District

	10th CD	State Total
Number of Registered Boats	38,427	383,604
Type of Registered Boats		
Power Boats	30,147	322,452
Outboards	21,134	253,558
Inboards	1,221	13,679
Stern Drives	7,506	52,681
Jet Boats	286	2,534
Personal Watercraft	7,796	52,866
Sailboats	484	8,286
Size of Registered Boats		
≤ 15'	13,176	137,175
16'-24'	22,259	221,475
25'-39'	2,883	22,851
40' +	109	2,103
Per Capita Ownership of Registered Boats		
All Population	57/1000	43/1000
Persons 18 +	75/1000	57/1000
Households	148/1000	106/1000

Table 3. Boating-related Businesses Based on NAICS Codes

Category	10th CD	State Total
Boat Building		
No. of Businesses	4	49
No. of Employees	5	1,646
Total Sales (\$ Millions)	\$0.2	\$215.7
Motors & Engines Mfg.		
No. of Businesses	-	1
No. of Employees	-	4
Total Sales (\$ Millions)	-	\$0.3
Accessories & Supplies Mfg.		
No. of Businesses	4	17
No. of Employees	13	165
Total Sales (\$ Millions)	\$1.3	\$12.3
Dealers & Wholesalers		
No. of Businesses	25	288
No. of Employees	180	1,734
Total Sales (\$ Millions)	\$52.0	\$413.9
Boating Services		
No. of Businesses	19	227
No. of Employees	77	1,022
Total Sales (\$ Millions)	\$8.8	\$303.5

Figure 1. Location of the North Carolina 10th Congressional District

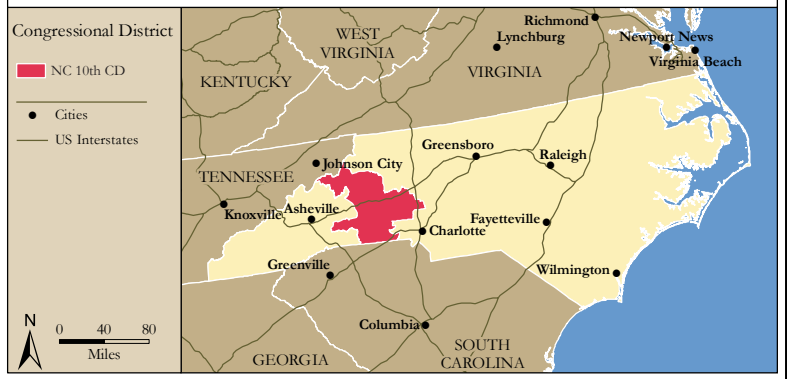


Figure 2. Navigable Waters of the North Carolina 10th Congressional District

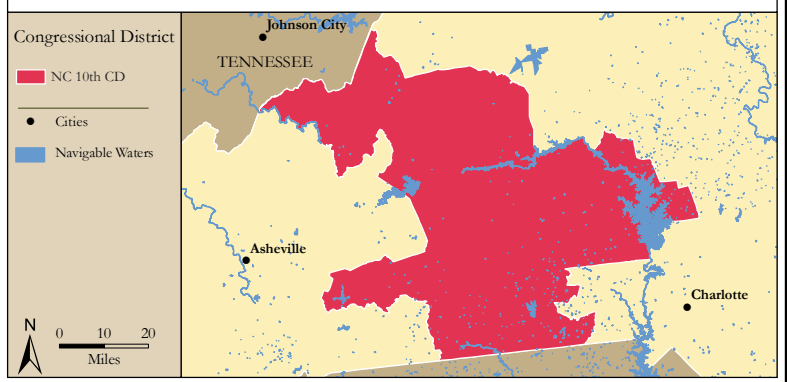


Figure 3. Number of Registered Boats by Zipcode within the North Carolina 10th Congressional District

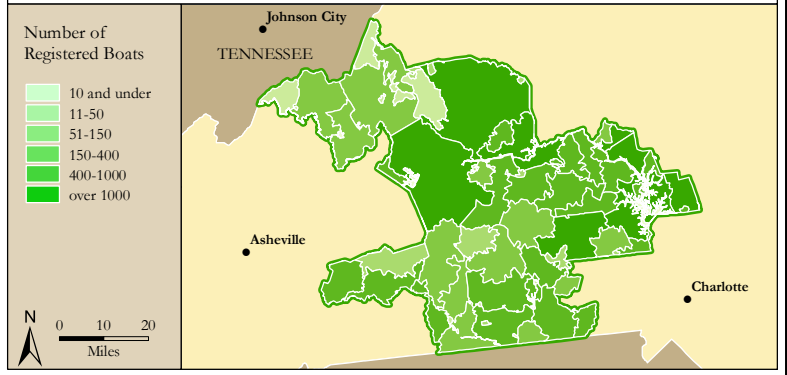
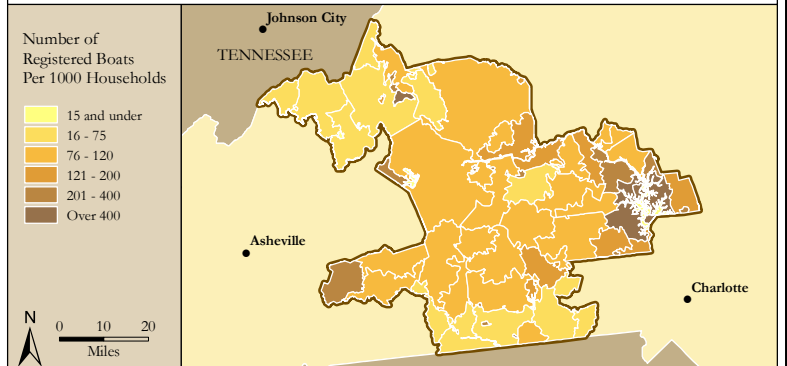


Figure 4. Per Capita (Household) Ownership of Registered Boats by Zipcode within the North Carolina 10th Congressional District



Economic Significance of Boating

Table 1. Craft and Trip Expenses by Power and Sailboats Registered in the North Carolina 10th Congressional District

Category	Boat Type and Size								Total
	Power <15'	Power 16' - 24'	Power 25' - 39'	Power 40'+	Sail <15'	Sail 16' - 24'	Sail 25' - 39'	Sail 40+	
Number of boats (Thousands of boats)	5.3	22.0	2.7	0.1	0.1	0.2	0.2	0.0	30.6
Annual craft spending (\$ per boat per year)	\$457.9	\$1,655.6	\$7,464.6	\$25,299.0	\$488.7	\$1,830.2	\$7,439.8	\$18,328.8	
Total craft spending (\$ Millions)	\$2.4	\$36.5	\$20.0	\$2.4	\$0.0	\$0.4	\$1.5	\$0.3	\$63.5
Total boat days (Thousands of days)	86.7	551.9	82.2	4.1	1.0	4.2	6.3	0.6	737.2
Total trip spending (\$ per boat per year)	\$935.9	\$2,148.4	\$4,574.4	\$8,039.6	\$1,009.7	\$1,009.7	\$1,963.9	\$5,204.7	
Total trip spending (\$ Millions)	\$5.0	\$47.4	\$12.3	\$0.8	\$0.1	\$0.2	\$0.4	\$0.1	\$66.1
Total craft & trip spending (\$ Millions)	\$7.4	\$83.9	\$32.3	\$3.2	\$0.1	\$0.6	\$1.9	\$0.3	\$129.6

Table 2. Total Spending on Boat Trips by Power and Sailboat Owners Registered in the North Carolina 10th CD

Category	Total (\$ Millions)	Percentage
Lodging	\$2.6	4%
Marina services	\$5.4	8%
Restaurant	\$12.1	18%
Groceries	\$12.0	18%
Boat fuel	\$16.6	25%
Auto fuel	\$11.4	17%
Repair & Maintenance	-	-
Marine supplies	-	-
Recreation & Entertainment	\$2.6	4%
Shopping	\$1.9	3%
Other services	-	-
Other goods	\$1.6	2%
Total	\$66.1	100%

Table 3. Total Annual Craft Spending (not including purchases of boats) by Power and Sailboat Owners Registered in the North Carolina 10th CD

Category	Total (\$ Millions)	Percentage
Slip	\$9.2	15%
Loan Payments	\$21.3	33%
Replacement Motors	\$0.8	1%
Replacement Trailers	\$0.2	0%
Insurance	\$5.6	9%
Repairs	\$12.5	20%
Accessories	\$11.5	18%
Taxes	\$2.5	4%
Total	\$63.5	100%

Table 4. Economic Significance of Trip Spending and Annual Craft Spending by Power and Sailboats Registered in the North Carolina 10th CD

	Trip Spending	Annual Craft Spending	Total
Direct Effects			
Sales (\$ Millions)	\$56.4	\$39.2	\$95.6
Jobs	579.7	452.1	1,031.8
Labor Income (\$ Millions)	\$16.7	\$15.1	\$31.9
Value Added (\$ Millions)	\$26.8	\$25.4	\$52.2
Total Effects			
Sales (\$ Millions)	\$151.3	\$99.4	\$250.8
Jobs	1,237.9	896.6	2,134.5
Labor Income (\$ Millions)	\$46.0	\$35.1	\$81.1
Value Added (\$ Millions)	\$77.8	\$58.6	\$136.4

Table 5. Economic Significance of Power and Sailboats Registered in the North Carolina 10th CD

Sector/Spending category	Sales (\$ Millions)	Jobs	Labor Income (\$Millions)	Value Added (\$Millions)
Direct Effects				
Lodging	\$2.6	32.5	\$1.0	\$1.9
Marina Services	\$14.6	187.4	\$5.1	\$9.2
Restaurant	\$12.1	240.2	\$4.1	\$5.8
Recreation & Entertainment	\$2.6	33.0	\$0.9	\$1.6
Repair & Maintenance	\$12.5	156.0	\$4.6	\$6.5
Insurance & Credit	\$7.0	50.3	\$3.0	\$6.4
Gas Service	\$6.2	74.1	\$3.0	\$4.7
Other Retail Trade	\$9.1	170.1	\$4.4	\$7.1
Wholesale Trade	\$6.0	38.5	\$2.6	\$4.6
Other Local Production of Goods	\$23.0	49.8	\$3.1	\$4.4
Total Direct Effects	\$95.6	1,031.8	\$31.9	\$52.2
Secondary Effects	\$155.1	1,102.7	\$49.2	\$84.2
Total Effects	\$250.8	2,134.5	\$81.1	\$136.4

The North Carolina 11th Congressional District

Table 1. The North Carolina 11th Congressional District Description

Area (square miles)	6,025
Navigable Waterbody (square miles)	62
Total Population (2007)	663,632
Population Density (per square mile) (2007)	109
Persons 18+ (2007)	525,413
Number of Households (2007)	287,889

Table 2. Registered Boats Owned by Residents Residing in the North Carolina 11th Congressional District

	11th CD	State Total
Number of Registered Boats	27,297	383,604
Type of Registered Boats		
Power Boats	23,140	322,452
Outboards	19,534	253,558
Inboards	776	13,679
Stern Drives	2,605	52,681
Jet Boats	225	2,534
Personal Watercraft	3,775	52,866
Sailboats	382	8,286
Size of Registered Boats		
≤ 15'	9,859	137,175
16'-24'	16,301	221,475
25'-39'	969	22,851
40' +	168	2,103
Per Capita Ownership of Registered Boats		
All Population	41/1000	43/1000
Persons 18 +	52/1000	57/1000
Households	95/1000	106/1000

Table 3. Boating-related Businesses Based on NAICS Codes

Category	11th CD	State Total
Boat Building		
No. of Businesses	3	49
No. of Employees	184	1,646
Total Sales (\$ Millions)	\$24.8	\$215.7
Motors & Engines Mfg.		
No. of Businesses	-	1
No. of Employees	-	4
Total Sales (\$ Millions)	-	\$0.3
Accessories & Supplies Mfg.		
No. of Businesses	2	17
No. of Employees	50	165
Total Sales (\$ Millions)	\$3.4	\$12.3
Dealers & Wholesalers		
No. of Businesses	21	288
No. of Employees	55	1,734
Total Sales (\$ Millions)	\$9.6	\$413.9
Boating Services		
No. of Businesses	18	227
No. of Employees	95	1,022
Total Sales (\$ Millions)	\$5.0	\$303.5

Figure 1. Location of the North Carolina 11th Congressional District



Figure 2. Navigable Waters of the North Carolina 11th Congressional District

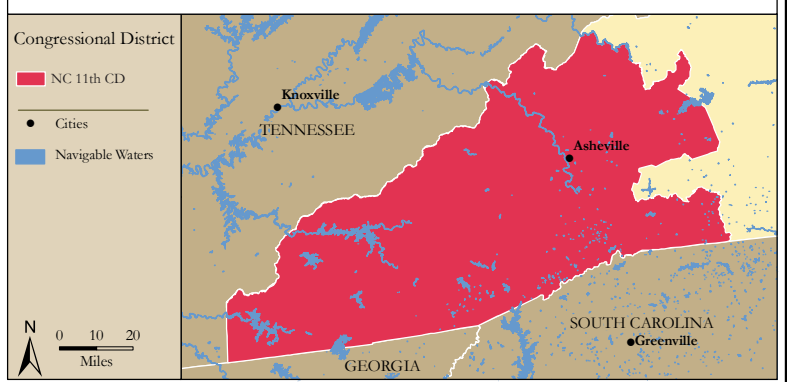


Figure 3. Number of Registered Boats by Zipcode within the North Carolina 11th Congressional District

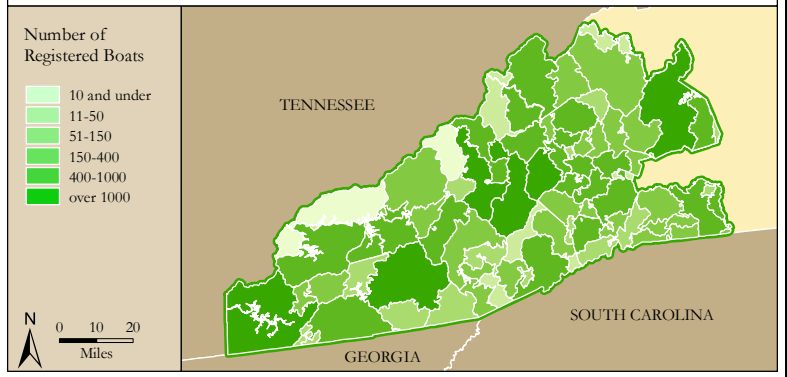
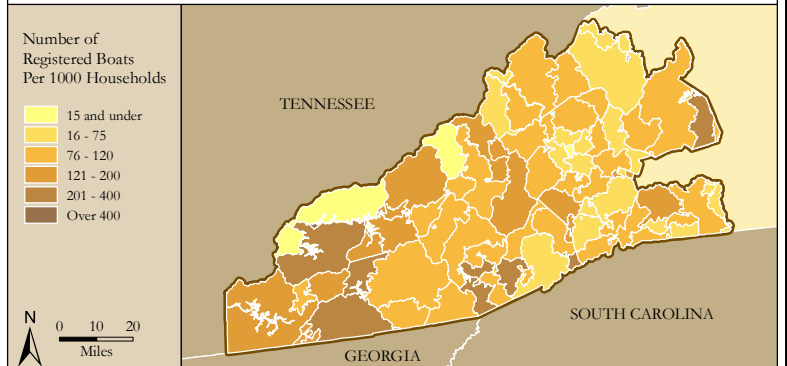


Figure 4. Per Capita (Household) Ownership of Registered Boats by Zipcode within the North Carolina 11th Congressional District



Economic Significance of Boating

Table 1. Craft and Trip Expenses by Power and Sailboats Registered in the North Carolina 11th Congressional District

Category	Boat Type and Size								Total
	Power <15'	Power 16' - 24'	Power 25' - 39'	Power 40'+	Sail <15'	Sail 16' - 24'	Sail 25' - 39'	Sail 40+	
Number of boats (Thousands of boats)	6.0	16.1	0.8	0.2	0.1	0.2	0.1	0.0	23.5
Annual craft spending (\$ per boat per year)	\$457.9	\$1,655.6	\$7,464.6	\$25,299.0	\$488.7	\$1,830.2	\$7,439.8	\$18,328.8	
Total craft spending (\$ Millions)	\$2.8	\$26.7	\$6.3	\$3.8	\$0.0	\$0.3	\$1.0	\$0.3	\$41.2
Total boat days (Thousands of days)	98.0	403.9	25.7	6.6	1.3	3.3	4.1	0.8	543.6
Total trip spending (\$ per boat per year)	\$935.9	\$2,148.4	\$4,574.4	\$8,039.6	\$1,009.7	\$1,009.7	\$1,963.9	\$5,204.7	
Total trip spending (\$ Millions)	\$5.6	\$34.7	\$3.8	\$1.2	\$0.1	\$0.2	\$0.3	\$0.1	\$45.9
Total craft & trip spending (\$ Millions)	\$8.4	\$61.4	\$10.1	\$5.0	\$0.1	\$0.5	\$1.2	\$0.4	\$87.1

Table 2. Total Spending on Boat Trips by Power and Sailboat Owners Registered in the North Carolina 11th CD

Category	Total (\$ Millions)	Percentage
Lodging	\$1.9	4%
Marina services	\$3.6	8%
Restaurant	\$8.3	18%
Groceries	\$8.5	18%
Boat fuel	\$10.8	24%
Auto fuel	\$8.5	18%
Repair & Maintenance	-	-
Marine supplies	-	-
Recreation & Entertainment	\$1.9	4%
Shopping	\$1.4	3%
Other services	-	-
Other goods	\$1.1	2%
Total	\$45.9	100%

Table 3. Total Annual Craft Spending (not including purchases of boats) by Power and Sailboat Owners Registered in the North Carolina 11th CD

Category	Total (\$ Millions)	Percentage
Slip	\$5.7	14%
Loan Payments	\$13.5	33%
Replacement Motors	\$0.5	1%
Replacement Trailers	\$0.1	0%
Insurance	\$3.7	9%
Repairs	\$8.1	20%
Accessories	\$7.7	19%
Taxes	\$1.7	4%
Total	\$41.2	100%

Table 4. Economic Significance of Trip Spending and Annual Craft Spending by Power and Sailboats Registered in the North Carolina 11th CD

	Trip Spending	Annual Craft Spending	Total
Direct Effects			
Sales (\$ Millions)	\$38.8	\$25.6	\$64.4
Jobs	402.4	294.0	696.4
Labor Income (\$ Millions)	\$11.6	\$9.9	\$21.5
Value Added (\$ Millions)	\$18.6	\$16.6	\$35.2
Total Effects			
Sales (\$ Millions)	\$104.3	\$64.8	\$169.1
Jobs	857.7	583.3	1,441.0
Labor Income (\$ Millions)	\$31.9	\$22.9	\$54.7
Value Added (\$ Millions)	\$53.8	\$38.2	\$92.0

Table 5. Economic Significance of Power and Sailboats Registered in the North Carolina 11th CD

Sector/Spending category	Sales (\$ Millions)	Jobs	Labor Income (\$Millions)	Value Added (\$Millions)
Direct Effects				
Lodging	\$1.9	23.9	\$0.8	\$1.4
Marina Services	\$9.3	119.5	\$3.3	\$5.9
Restaurant	\$8.3	164.6	\$2.8	\$4.0
Recreation & Entertainment	\$1.9	23.9	\$0.7	\$1.2
Repair & Maintenance	\$8.1	101.6	\$3.0	\$4.2
Insurance & Credit	\$4.6	33.4	\$2.0	\$4.2
Gas Service	\$4.3	51.0	\$2.1	\$3.3
Other Retail Trade	\$6.3	117.2	\$3.0	\$4.9
Wholesale Trade	\$4.1	26.6	\$1.8	\$3.2
Other Local Production of Goods	\$15.6	34.6	\$2.1	\$3.0
Total Direct Effects	\$64.4	696.4	\$21.5	\$35.2
Secondary Effects	\$104.7	744.7	\$33.2	\$56.8
Total Effects	\$169.1	1,441.0	\$54.7	\$92.0

The North Carolina 12th Congressional District

Table 1. The North Carolina 12th Congressional District Description

Area (square miles)	821
Navigable Waterbody (square miles)	6
Total Population (2007)	684,666
Population Density (per square mile) (2007)	827
Persons 18+ (2007)	507,296
Number of Households (2007)	262,813

Table 2. Registered Boats Owned by Residents Residing in the North Carolina 12th Congressional District

	12th CD	State Total
Number of Registered Boats	11,777	383,604
Type of Registered Boats		
Power Boats	9,545	322,452
Outboards	6,834	253,558
Inboards	440	13,679
Stern Drives	2,176	52,681
Jet Boats	95	2,534
Personal Watercraft	1,969	52,866
Sailboats	263	8,286
Size of Registered Boats		
≤ 15'	4,151	137,175
16'-24'	6,862	221,475
25'-39'	706	22,851
40' +	58	2,103
Per Capita Ownership of Registered Boats		
All Population	17/1000	43/1000
Persons 18 +	23/1000	57/1000
Households	45/1000	106/1000

Table 3. Boating-related Businesses Based on NAICS Codes

Category	12th CD	State Total
Boat Building		
No. of Businesses	1	49
No. of Employees	110	1,646
Total Sales (\$ Millions)	\$9.9	\$215.7
Motors & Engines Mfg.		
No. of Businesses	-	1
No. of Employees	-	4
Total Sales (\$ Millions)	-	\$0.3
Accessories & Supplies Mfg.		
No. of Businesses	-	17
No. of Employees	-	165
Total Sales (\$ Millions)	-	\$12.3
Dealers & Wholesalers		
No. of Businesses	8	288
No. of Employees	36	1,734
Total Sales (\$ Millions)	\$5.4	\$413.9
Boating Services		
No. of Businesses	3	227
No. of Employees	9	1,022
Total Sales (\$ Millions)	\$0.7	\$303.5

Figure 1. Location of the North Carolina 12th Congressional District



Figure 2. Navigable Waters of the North Carolina 12th Congressional District

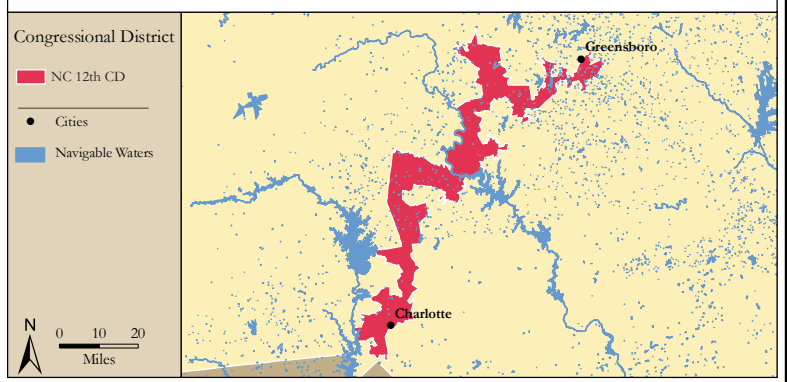


Figure 3. Number of Registered Boats by Zipcode within the North Carolina 12th Congressional District

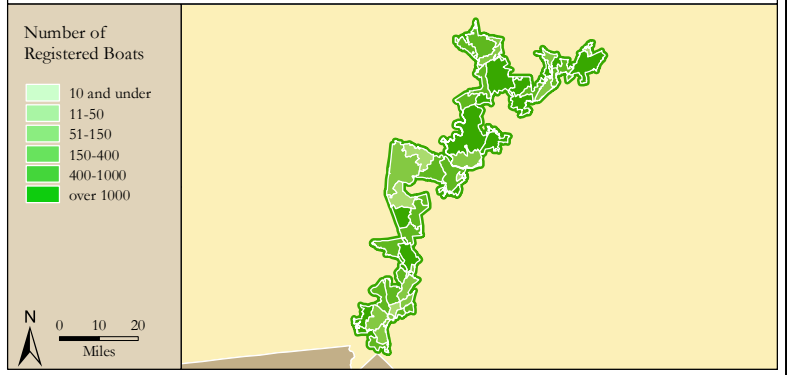
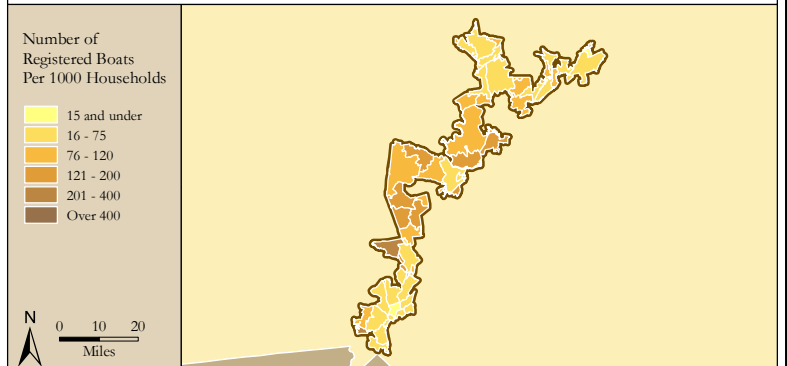


Figure 4. Per Capita (Household) Ownership of Registered Boats by Zipcode within the North Carolina 12th Congressional District



Economic Significance of Boating

Table 1. Craft and Trip Expenses by Power and Sailboats Registered in the North Carolina 12th Congressional District

Category	Boat Type and Size								Total
	Power <15'	Power 16' - 24'	Power 25' - 39'	Power 40'+	Sail <15'	Sail 16' - 24'	Sail 25' - 39'	Sail 40+	
Number of boats (Thousands of boats)	2.2	6.7	0.6	0.1	0.0	0.1	0.1	0.0	9.8
Annual craft spending (\$ per boat per year)	\$457.9	\$1,655.6	\$7,464.6	\$25,299.0	\$488.7	\$1,830.2	\$7,439.8	\$18,328.8	
Total craft spending (\$ Millions)	\$1.0	\$11.2	\$4.5	\$1.3	\$0.0	\$0.2	\$0.8	\$0.1	\$19.1
Total boat days (Thousands of days)	35.1	168.7	18.4	2.2	0.5	2.4	3.3	0.4	231.0
Total trip spending (\$ per boat per year)	\$935.9	\$2,148.4	\$4,574.4	\$8,039.6	\$1,009.7	\$1,009.7	\$1,963.9	\$5,204.7	
Total trip spending (\$ Millions)	\$2.0	\$14.5	\$2.7	\$0.4	\$0.0	\$0.1	\$0.2	\$0.0	\$20.0
Total craft & trip spending (\$ Millions)	\$3.0	\$25.6	\$7.2	\$1.7	\$0.0	\$0.4	\$1.0	\$0.2	\$39.1

Table 2. Total Spending on Boat Trips by Power and Sailboat Owners Registered in the North Carolina 12th CD

Category	Total (\$ Millions)	Percentage
Lodging	\$0.8	4%
Marina services	\$1.6	8%
Restaurant	\$3.7	18%
Groceries	\$3.7	18%
Boat fuel	\$4.9	24%
Auto fuel	\$3.5	18%
Repair & Maintenance	-	-
Marine supplies	-	-
Recreation & Entertainment	\$0.8	4%
Shopping	\$0.6	3%
Other services	-	-
Other goods	\$0.5	2%
Total	\$20.0	100%

Table 3. Total Annual Craft Spending (not including purchases of boats) by Power and Sailboat Owners Registered in the North Carolina 12th CD

Category	Total (\$ Millions)	Percentage
Slip	\$2.8	15%
Loan Payments	\$6.2	33%
Replacement Motors	\$0.2	1%
Replacement Trailers	\$0.1	0%
Insurance	\$1.7	9%
Repairs	\$3.8	20%
Accessories	\$3.5	18%
Taxes	\$0.8	4%
Total	\$19.1	100%

Table 4. Economic Significance of Trip Spending and Annual Craft Spending by Power and Sailboats Registered in the North Carolina 12th CD

	Trip Spending	Annual Craft Spending	Total
Direct Effects			
Sales (\$ Millions)	\$17.0	\$11.9	\$28.9
Jobs	176.2	136.9	313.1
Labor Income (\$ Millions)	\$5.1	\$4.6	\$9.7
Value Added (\$ Millions)	\$8.1	\$7.7	\$15.8
Total Effects			
Sales (\$ Millions)	\$45.8	\$30.1	\$75.9
Jobs	375.6	271.5	647.1
Labor Income (\$ Millions)	\$13.9	\$10.6	\$24.6
Value Added (\$ Millions)	\$23.6	\$17.7	\$41.3

Table 5. Economic Significance of Power and Sailboats Registered in the North Carolina 12th CD

Sector/Spending category	Sales (\$ Millions)	Jobs	Labor Income (\$Millions)	Value Added (\$Millions)
Direct Effects				
Lodging	\$0.8	10.0	\$0.3	\$0.6
Marina Services	\$4.4	56.5	\$1.5	\$2.8
Restaurant	\$3.7	72.7	\$1.2	\$1.8
Recreation & Entertainment	\$0.8	10.2	\$0.3	\$0.5
Repair & Maintenance	\$3.8	47.1	\$1.4	\$2.0
Insurance & Credit	\$2.1	15.2	\$0.9	\$1.9
Gas Service	\$1.9	22.3	\$0.9	\$1.4
Other Retail Trade	\$2.8	52.1	\$1.4	\$2.2
Wholesale Trade	\$1.8	11.7	\$0.8	\$1.4
Other Local Production of Goods	\$6.9	15.2	\$0.9	\$1.3
Total Direct Effects	\$28.9	313.1	\$9.7	\$15.8
Secondary Effects	\$46.9	334.0	\$14.9	\$25.5
Total Effects	\$75.9	647.1	\$24.6	\$41.3

The North Carolina 13th Congressional District

Table 1. The North Carolina 13th Congressional District Description

Area (square miles)	2,256
Navigable Waterbody (square miles)	34
Total Population (2007)	711,133
Population Density (per square mile) (2007)	310
Persons 18+ (2007)	544,724
Number of Households (2007)	282,631

Table 2. Registered Boats Owned by Residents Residing in the North Carolina 13th Congressional District

	13th CD	State Total
Number of Registered Boats	19,152	383,604
Type of Registered Boats		
Power Boats	15,972	322,452
Outboards	12,215	253,558
Inboards	790	13,679
Stern Drives	2,857	52,681
Jet Boats	110	2,534
Personal Watercraft	2,613	52,866
Sailboats	567	8,286
Size of Registered Boats		
≤ 15'	6,561	137,175
16'-24'	11,413	221,475
25'-39'	1,058	22,851
40' +	120	2,103
Per Capita Ownership of Registered Boats		
All Population	27/1000	43/1000
Persons 18 +	35/1000	57/1000
Households	68/1000	106/1000

Table 3. Boating-related Businesses Based on NAICS Codes

Category	13th CD	State Total
Boat Building		
No. of Businesses	2	49
No. of Employees	2	1,646
Total Sales (\$ Millions)	\$0.1	\$215.7
Motors & Engines Mfg.		
No. of Businesses	-	1
No. of Employees	-	4
Total Sales (\$ Millions)	-	\$0.3
Accessories & Supplies Mfg.		
No. of Businesses	-	17
No. of Employees	-	165
Total Sales (\$ Millions)	-	\$12.3
Dealers & Wholesalers		
No. of Businesses	18	288
No. of Employees	98	1,734
Total Sales (\$ Millions)	\$16.7	\$413.9
Boating Services		
No. of Businesses	2	227
No. of Employees	27	1,022
Total Sales (\$ Millions)	\$0.8	\$303.5

Figure 1. Location of the North Carolina 13th Congressional District



Figure 2. Navigable Waters of the North Carolina 13th Congressional District

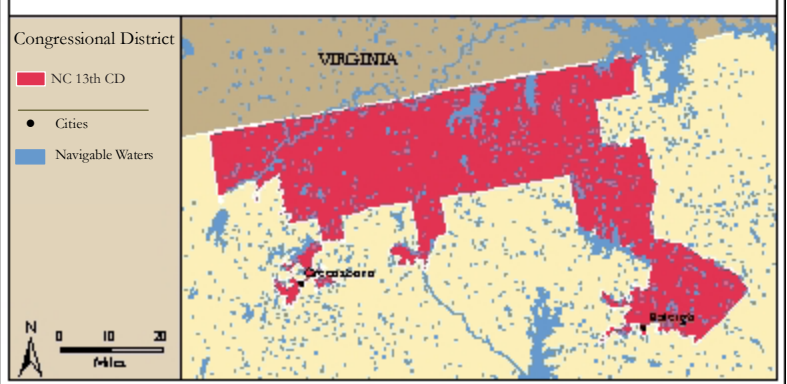


Figure 3. Number of Registered Boats by Zipcode within the North Carolina 13th Congressional District

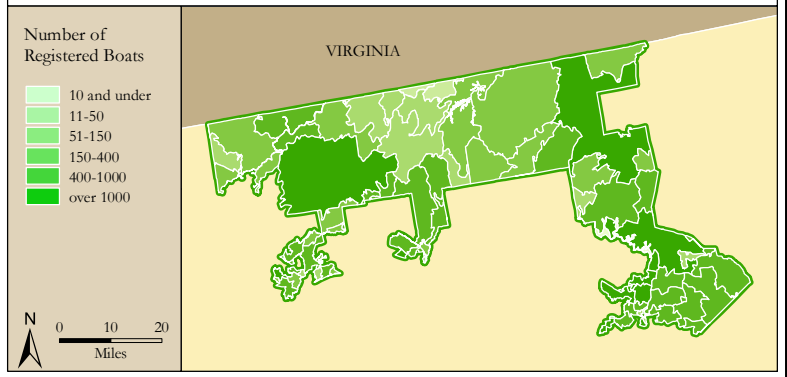
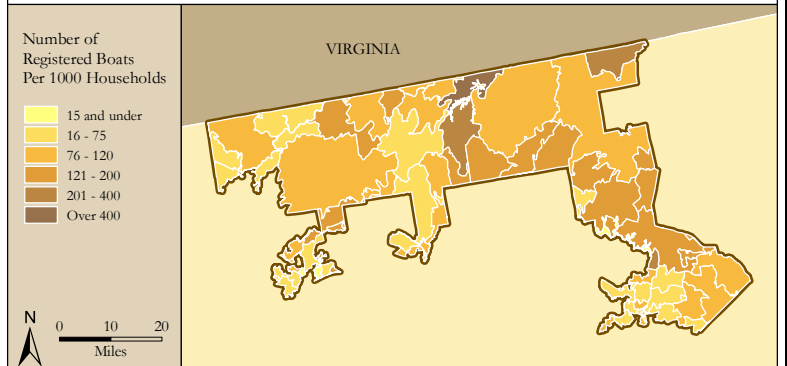


Figure 4. Per Capita (Household) Ownership of Registered Boats by Zipcode within the North Carolina 13th Congressional District



Economic Significance of Boating

Table 1. Craft and Trip Expenses by Power and Sailboats Registered in the North Carolina 13th Congressional District

Category	Boat Type and Size								Total
	Power <15'	Power 16' - 24'	Power 25' - 39'	Power 40'+	Sail <15'	Sail 16' - 24'	Sail 25' - 39'	Sail 40+	
Number of boats (Thousands of boats)	3.9	11.1	0.8	0.1	0.0	0.3	0.2	0.0	16.5
Annual craft spending (\$ per boat per year)	\$457.9	\$1,655.6	\$7,464.6	\$25,299.0	\$488.7	\$1,830.2	\$7,439.8	\$18,328.8	
Total craft spending (\$ Millions)	\$1.8	\$18.4	\$6.2	\$2.4	\$0.0	\$0.5	\$1.7	\$0.4	\$31.5
Total boat days (Thousands of days)	63.5	279.0	25.6	4.2	0.9	5.2	7.0	1.1	386.5
Total trip spending (\$ per boat per year)	\$935.9	\$2,148.4	\$4,574.4	\$8,039.6	\$1,009.7	\$1,009.7	\$1,963.9	\$5,204.7	
Total trip spending (\$ Millions)	\$3.6	\$23.9	\$3.8	\$0.8	\$0.0	\$0.3	\$0.4	\$0.1	\$33.1
Total craft & trip spending (\$ Millions)	\$5.4	\$42.4	\$10.0	\$3.2	\$0.1	\$0.8	\$2.1	\$0.6	\$64.6

Table 2. Total Spending on Boat Trips by Power and Sailboat Owners Registered in the North Carolina 13th CD

Category	Total (\$ Millions)	Percentage
Lodging	\$1.3	4%
Marina services	\$2.7	8%
Restaurant	\$6.1	18%
Groceries	\$6.1	18%
Boat fuel	\$7.9	24%
Auto fuel	\$5.9	18%
Repair & Maintenance	-	-
Marine supplies	-	-
Recreation & Entertainment	\$1.3	4%
Shopping	\$1.0	3%
Other services	-	-
Other goods	\$0.8	2%
Total	\$33.1	100%

Table 3. Total Annual Craft Spending (not including purchases of boats) by Power and Sailboat Owners Registered in the North Carolina 13th CD

Category	Total (\$ Millions)	Percentage
Slip	\$4.6	15%
Loan Payments	\$10.2	32%
Replacement Motors	\$0.4	1%
Replacement Trailers	\$0.1	0%
Insurance	\$2.8	9%
Repairs	\$6.3	20%
Accessories	\$5.9	19%
Taxes	\$1.3	4%
Total	\$31.5	100%

Table 4. Economic Significance of Trip Spending and Annual Craft Spending by Power and Sailboats Registered in the North Carolina 13th CD

	Trip Spending	Annual Craft Spending	Total
Direct Effects			
Sales (\$ Millions)	\$28.1	\$19.7	\$47.8
Jobs	291.2	227.8	519.0
Labor Income (\$ Millions)	\$8.4	\$7.6	\$16.0
Value Added (\$ Millions)	\$13.4	\$12.8	\$26.2
Total Effects			
Sales (\$ Millions)	\$75.4	\$50.1	\$125.5
Jobs	620.2	451.7	1,071.9
Labor Income (\$ Millions)	\$23.0	\$17.7	\$40.7
Value Added (\$ Millions)	\$38.9	\$29.5	\$68.3

Table 5. Economic Significance of Power and Sailboats Registered in the North Carolina 13th CD

Sector/Spending category	Sales (\$ Millions)	Jobs	Labor Income (\$Millions)	Value Added (\$Millions)
Direct Effects				
Lodging	\$1.3	16.7	\$0.5	\$1.0
Marina Services	\$7.3	93.9	\$2.6	\$4.6
Restaurant	\$6.1	120.1	\$2.1	\$2.9
Recreation & Entertainment	\$1.3	17.0	\$0.5	\$0.8
Repair & Maintenance	\$6.3	78.1	\$2.3	\$3.3
Insurance & Credit	\$3.5	25.1	\$1.5	\$3.2
Gas Service	\$3.1	36.5	\$1.5	\$2.3
Other Retail Trade	\$4.6	86.8	\$2.3	\$3.6
Wholesale Trade	\$3.0	19.4	\$1.3	\$2.3
Other Local				
Production of Goods	\$11.3	25.3	\$1.5	\$2.2
Total Direct Effects	\$47.8	519.0	\$16.0	\$26.2
Secondary Effects	\$77.7	552.9	\$24.7	\$42.2
Total Effects	\$125.5	1,071.9	\$40.7	\$68.3