

# The Washington 1st Congressional District

**Table 1. The Washington 1st Congressional District Description**

Area (square miles)	439
Navigable Waterbody (square miles)	52
Total Population (2007)	707,665
Population Density (per square mile) (2007)	1,572
Persons 18+ (2007)	545,695
Number of Households (2007)	281,658

**Table 2. Registered Boats Owned by Residents Residing in the Washington 1st Congressional District**

	1st CD	State Total
<b>Number of Registered Boats</b>	34,694	315,948
<b>Type of Registered Boats</b>		
Power Boats	28,232	263,729
Outboards	14,482	148,123
Inboards	3,696	28,244
Stern Drives	9,596	80,620
Jet Boats	458	6,742
Personal Watercraft	4,014	36,277
Sailboats	2,448	15,942
<b>Size of Registered Boats</b>		
≤ 15'	11,866	113,560
16'-24'	17,226	166,234
25'-39'	4,412	28,227
40' +	1,190	7,927
<b>Per Capita Ownership of Registered Boats</b>		
All Population	49/1000	49/1000
Persons 18 +	64/1000	67/1000
Households	123/1000	123/1000

**Table 3. Boating-related Businesses Based on NAICS Codes**

Category	1st CD	State Total
<b>Boat Building</b>		
No. of Businesses	6	102
No. of Employees	13	2,526
Total Sales (\$ Millions)	\$0.8	\$450.1
<b>Motors &amp; Engines Mfg.</b>		
No. of Businesses	-	1
No. of Employees	-	1
Total Sales (\$ Millions)	-	\$0.1
<b>Accessories &amp; Supplies Mfg.</b>		
No. of Businesses	6	36
No. of Employees	51	412
Total Sales (\$ Millions)	\$4.2	\$133.5
<b>Dealers &amp; Wholesalers</b>		
No. of Businesses	39	369
No. of Employees	145	1,558
Total Sales (\$ Millions)	\$38.0	\$393.9
<b>Boating Services</b>		
No. of Businesses	30	332
No. of Employees	103	1,907
Total Sales (\$ Millions)	\$9.7	\$136.3

Figure 1. Location of the Washington 1st Congressional District



Figure 2. Navigable Waters of the Washington 1st Congressional District

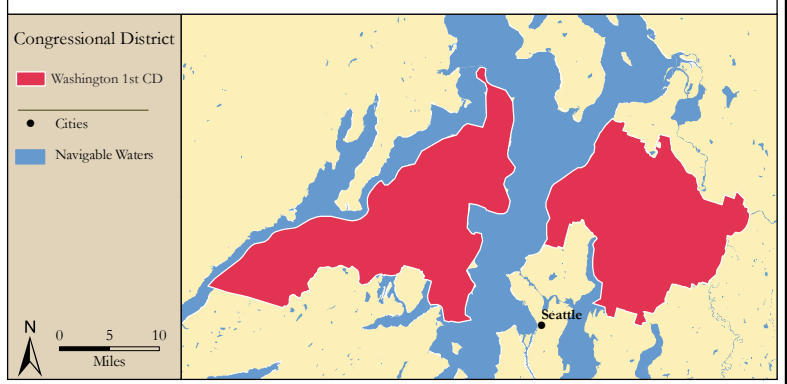


Figure 3. Number of Registered Boats by Zipcode within the Washington 1st Congressional District

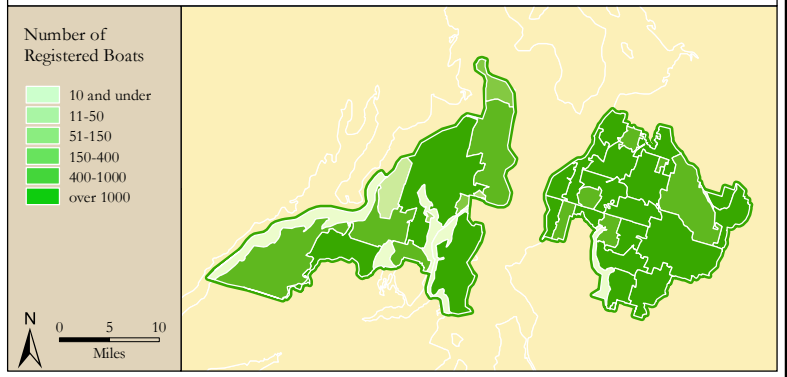
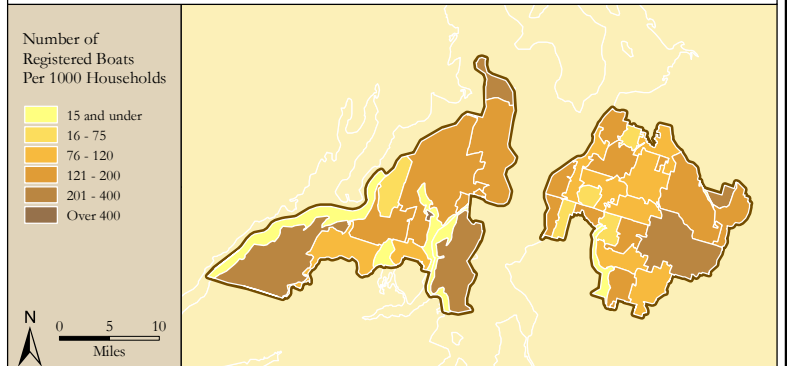


Figure 4. Per Capita (Household) Ownership of Registered Boats by Zipcode within the Washington 1st Congressional District



# Economic Significance of Boating

**Table 1. Craft and Trip Expenses by Power and Sailboats Registered in the Washington 1st Congressional District**

Category	Boat Type and Size								Total
	Power <15'	Power 16' - 24'	Power 25' - 39'	Power 40'+	Sail <15'	Sail 16' - 24'	Sail 25' - 39'	Sail 40+	
Number of boats (Thousands of boats)	7.8	16.7	2.9	0.9	0.1	0.6	1.5	0.3	30.7
Annual craft spending (\$ per boat per year)	\$457.9	\$1,655.6	\$7,464.6	\$25,299.0	\$488.7	\$1,830.2	\$7,439.8	\$18,328.8	
Total craft spending (\$ Millions)	\$3.6	\$27.6	\$21.9	\$22.3	\$0.0	\$1.0	\$11.0	\$5.6	\$93.1
Total boat days (Thousands of days)	126.2	417.1	90.2	38.4	1.9	11.0	46.2	14.0	745.0
Total trip spending (\$ per boat per year)	\$935.9	\$2,148.4	\$4,574.4	\$8,039.6	\$1,009.7	\$1,009.7	\$1,963.9	\$5,204.7	
Total trip spending (\$ Millions)	\$7.3	\$35.8	\$13.4	\$7.1	\$0.1	\$0.6	\$2.9	\$1.6	\$68.8
Total craft & trip spending (\$ Millions)	\$10.8	\$63.4	\$35.4	\$29.4	\$0.1	\$1.6	\$13.8	\$7.2	\$161.8

**Table 2. Total Spending on Boat Trips by Power and Sailboat Owners Registered in the Washington 1st CD**

Category	Total (\$ Millions)	Percentage
Lodging	\$2.3	3%
Marina services	\$6.6	10%
Restaurant	\$13.3	19%
Groceries	\$12.4	18%
Boat fuel	\$17.3	25%
Auto fuel	\$10.4	15%
Repair & Maintenance	-	-
Marine supplies	-	-
Recreation & Entertainment	\$2.7	4%
Shopping	\$2.1	3%
Other services	-	-
Other goods	\$1.6	2%
<b>Total</b>	<b>\$68.8</b>	<b>100%</b>

**Table 3. Total Annual Craft Spending (not including purchases of boats) by Power and Sailboat Owners Registered in the Washington 1st CD**

Category	Total (\$ Millions)	Percentage
Slip	\$15.9	17%
Loan Payments	\$30.1	32%
Replacement Motors	\$0.7	1%
Replacement Trailers	\$0.2	0%
Insurance	\$7.9	8%
Repairs	\$18.6	20%
Accessories	\$16.2	17%
Taxes	\$3.6	4%
<b>Total</b>	<b>\$93.1</b>	<b>100%</b>

**Table 4. Economic Significance of Trip Spending and Annual Craft Spending by Power and Sailboats Registered in the Washington 1st CD**

	Trip Spending	Annual Craft Spending	Total
<b>Direct Effects</b>			
Sales (\$ Millions)	\$59.7	\$58.8	\$118.4
Jobs	622.0	683.9	1,305.9
Labor Income (\$ Millions)	\$17.7	\$22.6	\$40.3
Value Added (\$ Millions)	\$28.3	\$37.9	\$66.2
<b>Total Effects</b>			
Sales (\$ Millions)	\$160.4	\$149.1	\$309.5
Jobs	1,320.9	1,352.0	2,673.0
Labor Income (\$ Millions)	\$48.8	\$52.5	\$101.3
Value Added (\$ Millions)	\$82.4	\$87.7	\$170.1

**Table 5. Economic Significance of Power and Sailboats Registered in the Washington 1st CD**

Sector/Spending category	Sales (\$ Millions)	Jobs	Labor Income (\$Millions)	Value Added (\$Millions)
<b>Direct Effects</b>				
Lodging	\$2.3	28.3	\$0.9	\$1.6
Marina Services	\$22.5	289.4	\$7.9	\$14.2
Restaurant	\$13.3	263.6	\$4.5	\$6.4
Recreation & Entertainment	\$2.7	34.7	\$0.9	\$1.7
Repair & Maintenance	\$18.6	232.2	\$6.9	\$9.7
Insurance & Credit	\$9.8	70.9	\$4.2	\$9.0
Gas Service	\$6.2	73.1	\$3.0	\$4.7
Other Retail Trade	\$11.1	211.9	\$5.5	\$8.9
Wholesale Trade	\$6.8	43.8	\$2.9	\$5.2
Other Local Production of Goods	\$25.1	58.0	\$3.5	\$4.9
<b>Total Direct Effects</b>	<b>\$118.4</b>	<b>1,305.9</b>	<b>\$40.3</b>	<b>\$66.2</b>
<b>Secondary Effects</b>	<b>\$191.0</b>	<b>1,367.0</b>	<b>\$61.0</b>	<b>\$104.0</b>
<b>Total Effects</b>	<b>\$309.5</b>	<b>2,673.0</b>	<b>\$101.3</b>	<b>\$170.1</b>

# The Washington 2nd Congressional District

**Table 1. The Washington 2nd Congressional District Description**

Area (square miles)	6,564
Navigable Waterbody (square miles)	311
Total Population (2007)	736,122
Population Density (per square mile) (2007)	110
Persons 18+ (2007)	565,246
Number of Households (2007)	286,526

**Table 2. Registered Boats Owned by Residents Residing in the Washington 2nd Congressional District**

	2nd CD	State Total
<b>Number of Registered Boats</b>	44,478	315,948
<b>Type of Registered Boats</b>		
Power Boats	37,658	263,729
Outboards	23,401	148,123
Inboards	4,317	28,244
Stern Drives	9,351	80,620
Jet Boats	589	6,742
Personal Watercraft	3,955	36,277
Sailboats	2,865	15,942
<b>Size of Registered Boats</b>		
≤ 15'	16,897	113,560
16'-24'	20,728	166,234
25'-39'	5,399	28,227
40' +	1,454	7,927
<b>Per Capita Ownership of Registered Boats</b>		
All Population	60/1000	49/1000
Persons 18 +	79/1000	67/1000
Households	155/1000	123/1000

**Table 3. Boating-related Businesses Based on NAICS Codes**

Category	2nd CD	State Total
<b>Boat Building</b>		
No. of Businesses	30	102
No. of Employees	854	2,526
Total Sales (\$ Millions)	\$205.6	\$450.1
<b>Motors &amp; Engines Mfg.</b>		
No. of Businesses	-	1
No. of Employees	-	1
Total Sales (\$ Millions)	-	\$0.1
<b>Accessories &amp; Supplies Mfg.</b>		
No. of Businesses	8	36
No. of Employees	109	412
Total Sales (\$ Millions)	\$49.6	\$133.5
<b>Dealers &amp; Wholesalers</b>		
No. of Businesses	90	369
No. of Employees	386	1,558
Total Sales (\$ Millions)	\$73.6	\$393.9
<b>Boating Services</b>		
No. of Businesses	83	332
No. of Employees	458	1,907
Total Sales (\$ Millions)	\$44.9	\$136.3

Figure 1. Location of the Washington 2nd Congressional District



Figure 2. Navigable Waters of the Washington 2nd Congressional District

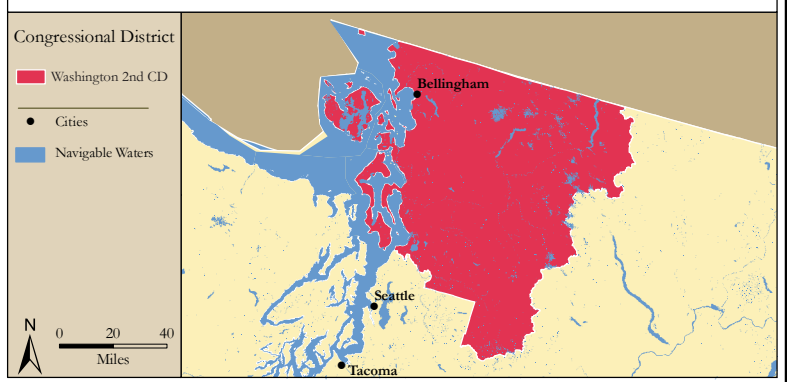


Figure 3. Number of Registered Boats by Zipcode within the Washington 2nd Congressional District

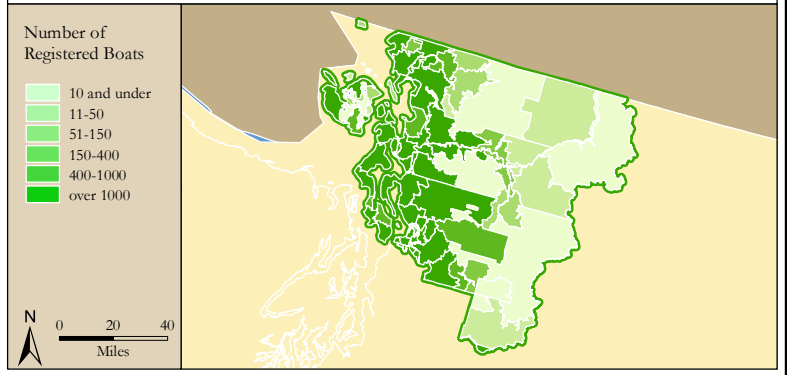
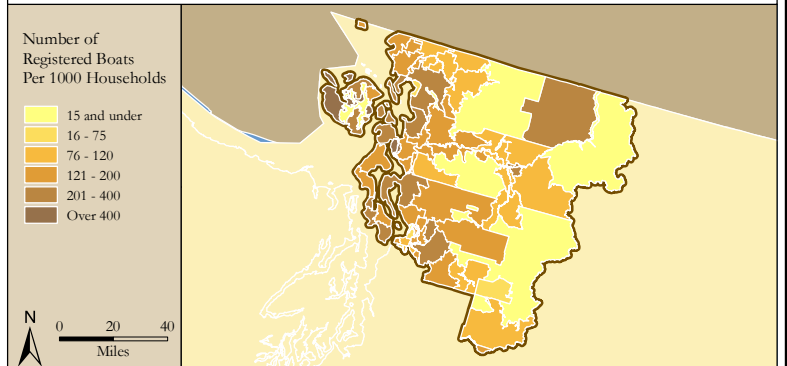


Figure 4. Per Capita (Household) Ownership of Registered Boats by Zipcode within the Washington 2nd Congressional District



# Economic Significance of Boating

**Table 1. Craft and Trip Expenses by Power and Sailboats Registered in the Washington 2nd Congressional District**

Category	Boat Type and Size								Total
	Power <15'	Power 16' - 24'	Power 25' - 39'	Power 40'+	Sail <15'	Sail 16' - 24'	Sail 25' - 39'	Sail 40+	
Number of boats (Thousands of boats)	12.8	20.1	3.6	1.2	0.2	0.6	1.8	0.3	40.5
Annual craft spending (\$ per boat per year)	\$457.9	\$1,655.6	\$7,464.6	\$25,299.0	\$488.7	\$1,830.2	\$7,439.8	\$18,328.8	
Total craft spending (\$ Millions)	\$5.9	\$33.2	\$27.1	\$29.1	\$0.1	\$1.2	\$13.1	\$5.6	\$115.3
Total boat days (Thousands of days)	208.2	502.8	111.5	50.0	2.9	12.5	55.4	13.9	957.3
Total trip spending (\$ per boat per year)	\$935.9	\$2,148.4	\$4,574.4	\$8,039.6	\$1,009.7	\$1,009.7	\$1,963.9	\$5,204.7	
Total trip spending (\$ Millions)	\$12.0	\$43.1	\$16.6	\$9.2	\$0.2	\$0.7	\$3.5	\$1.6	\$86.8
Total craft & trip spending (\$ Millions)	\$17.8	\$76.4	\$43.8	\$38.3	\$0.2	\$1.8	\$16.6	\$7.2	\$202.1

**Table 2. Total Spending on Boat Trips by Power and Sailboat Owners Registered in the Washington 2nd CD**

Category	Total (\$ Millions)	Percentage
Lodging	\$2.8	3%
Marina services	\$8.4	10%
Restaurant	\$16.7	19%
Groceries	\$15.6	18%
Boat fuel	\$21.7	25%
Auto fuel	\$13.2	15%
Repair & Maintenance	-	-
Marine supplies	-	-
Recreation & Entertainment	\$3.5	4%
Shopping	\$2.7	3%
Other services	-	-
Other goods	\$2.0	2%
<b>Total</b>	<b>\$86.8</b>	<b>100%</b>

**Table 3. Total Annual Craft Spending (not including purchases of boats) by Power and Sailboat Owners Registered in the Washington 2nd CD**

Category	Total (\$ Millions)	Percentage
Slip	\$19.5	17%
Loan Payments	\$37.3	32%
Replacement Motors	\$0.9	1%
Replacement Trailers	\$0.2	0%
Insurance	\$9.8	8%
Repairs	\$23.0	20%
Accessories	\$20.1	17%
Taxes	\$4.5	4%
<b>Total</b>	<b>\$115.3</b>	<b>100%</b>

**Table 4. Economic Significance of Trip Spending and Annual Craft Spending by Power and Sailboats Registered in the Washington 2nd CD**

	Trip Spending	Annual Craft Spending	Total
<b>Direct Effects</b>			
Sales (\$ Millions)	\$75.3	\$72.7	\$148.0
Jobs	784.6	845.7	1,630.3
Labor Income (\$ Millions)	\$22.3	\$28.0	\$50.3
Value Added (\$ Millions)	\$35.7	\$46.9	\$82.6
<b>Total Effects</b>			
Sales (\$ Millions)	\$202.3	\$184.4	\$386.7
Jobs	1,666.1	1,672.1	3,338.2
Labor Income (\$ Millions)	\$61.5	\$65.0	\$126.5
Value Added (\$ Millions)	\$104.0	\$108.6	\$212.5

**Table 5. Economic Significance of Power and Sailboats Registered in the Washington 2nd CD**

Sector/Spending category	Sales (\$ Millions)	Jobs	Labor Income (\$Millions)	Value Added (\$Millions)
<b>Direct Effects</b>				
Lodging	\$2.8	35.4	\$1.1	\$2.0
Marina Services	\$27.9	358.5	\$9.8	\$17.6
Restaurant	\$16.7	331.4	\$5.7	\$8.0
Recreation & Entertainment	\$3.5	44.4	\$1.2	\$2.2
Repair & Maintenance	\$23.0	287.1	\$8.5	\$12.0
Insurance & Credit	\$12.2	88.2	\$5.3	\$11.2
Gas Service	\$7.8	92.7	\$3.7	\$5.9
Other Retail Trade	\$13.9	265.0	\$6.8	\$11.1
Wholesale Trade	\$8.6	55.0	\$3.7	\$6.5
Other Local Production of Goods	\$31.5	72.7	\$4.4	\$6.1
<b>Total Direct Effects</b>	<b>\$148.0</b>	<b>1,630.3</b>	<b>\$50.3</b>	<b>\$82.6</b>
<b>Secondary Effects</b>	<b>\$238.7</b>	<b>1,707.9</b>	<b>\$76.3</b>	<b>\$129.9</b>
<b>Total Effects</b>	<b>\$386.7</b>	<b>3,338.2</b>	<b>\$126.5</b>	<b>\$212.5</b>

# The Washington 3rd Congressional District

**Table 1. The Washington 3rd Congressional District Description**

Area (square miles)	7,515
Navigable Waterbody (square miles)	211
Total Population (2007)	766,630
Population Density (per square mile) (2007)	100
Persons 18+ (2007)	585,816
Number of Households (2007)	286,131

**Table 2. Registered Boats Owned by Residents Residing in the Washington 3rd Congressional District**

	3rd CD	State Total
<b>Number of Registered Boats</b>	36,200	315,948
<b>Type of Registered Boats</b>		
Power Boats	30,731	263,729
Outboards	18,510	148,123
Inboards	2,475	28,244
Stern Drives	8,337	80,620
Jet Boats	1,409	6,742
Personal Watercraft	4,236	36,277
Sailboats	1,233	15,942
<b>Size of Registered Boats</b>		
≤ 15'	14,017	113,560
16'-24'	19,744	166,234
25'-39'	2,019	28,227
40' +	420	7,927
<b>Per Capita Ownership of Registered Boats</b>		
All Population	47/1000	49/1000
Persons 18 +	62/1000	67/1000
Households	127/1000	123/1000

**Table 3. Boating-related Businesses Based on NAICS Codes**

Category	3rd CD	State Total
<b>Boat Building</b>		
No. of Businesses	4	102
No. of Employees	409	2,526
Total Sales (\$ Millions)	\$46.7	\$450.1
<b>Motors &amp; Engines Mfg.</b>		
No. of Businesses	-	1
No. of Employees	-	1
Total Sales (\$ Millions)	-	\$0.1
<b>Accessories &amp; Supplies Mfg.</b>		
No. of Businesses	3	36
No. of Employees	5	412
Total Sales (\$ Millions)	\$0.4	\$133.5
<b>Dealers &amp; Wholesalers</b>		
No. of Businesses	23	369
No. of Employees	62	1,558
Total Sales (\$ Millions)	\$13.5	\$393.9
<b>Boating Services</b>		
No. of Businesses	18	332
No. of Employees	62	1,907
Total Sales (\$ Millions)	\$4.2	\$136.3

Figure 1. Location of the Washington 3rd Congressional District



Figure 2. Navigable Waters of the Washington 3rd Congressional District



Figure 3. Number of Registered Boats by Zipcode within the Washington 3rd Congressional District

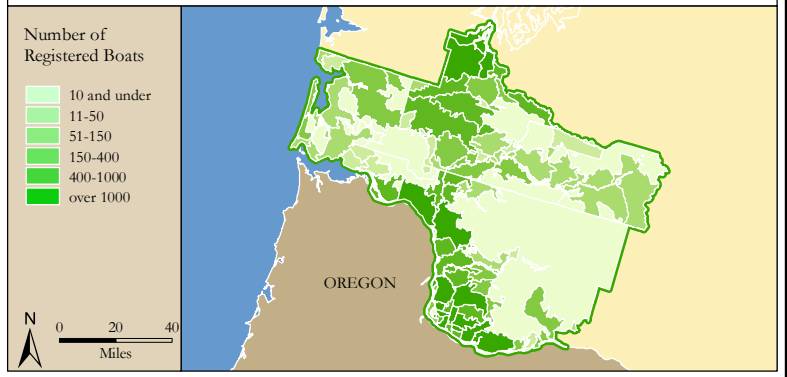
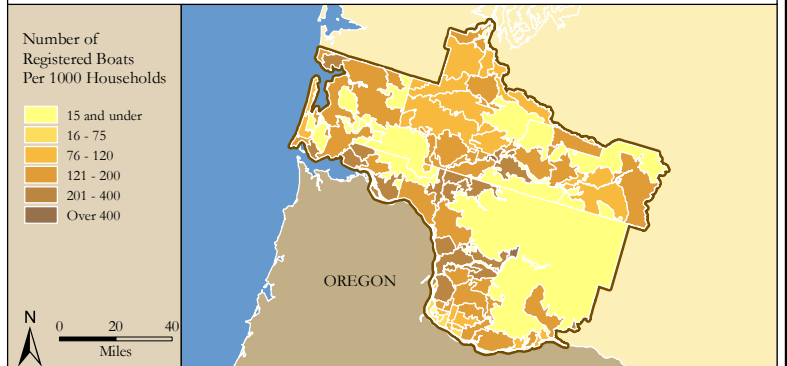


Figure 4. Per Capita (Household) Ownership of Registered Boats by Zipcode within the Washington 3rd Congressional District



# Economic Significance of Boating

**Table 1. Craft and Trip Expenses by Power and Sailboats Registered in the Washington 3rd Congressional District**

Category	Boat Type and Size								Total
	Power <15'	Power 16' - 24'	Power 25' - 39'	Power 40'+	Sail <15'	Sail 16' - 24'	Sail 25' - 39'	Sail 40+	
Number of boats (Thousands of boats)	9.7	19.3	1.4	0.3	0.1	0.4	0.6	0.1	32.0
Annual craft spending (\$ per boat per year)	\$457.9	\$1,655.6	\$7,464.6	\$25,299.0	\$488.7	\$1,830.2	\$7,439.8	\$18,328.8	
Total craft spending (\$ Millions)	\$4.4	\$32.0	\$10.4	\$8.0	\$0.1	\$0.7	\$4.7	\$1.9	\$62.2
Total boat days (Thousands of days)	157.5	484.5	42.7	13.8	2.1	7.6	19.7	4.7	732.6
Total trip spending (\$ per boat per year)	\$935.9	\$2,148.4	\$4,574.4	\$8,039.6	\$1,009.7	\$1,009.7	\$1,963.9	\$5,204.7	
Total trip spending (\$ Millions)	\$9.1	\$41.6	\$6.4	\$2.6	\$0.1	\$0.4	\$1.2	\$0.5	\$61.8
Total craft & trip spending (\$ Millions)	\$13.5	\$73.6	\$16.8	\$10.6	\$0.2	\$1.1	\$5.9	\$2.4	\$124.0

**Table 2. Total Spending on Boat Trips by Power and Sailboat Owners Registered in the Washington 3rd CD**

Category	Total (\$ Millions)	Percentage
Lodging	\$2.4	4%
Marina services	\$5.2	8%
Restaurant	\$11.4	18%
Groceries	\$11.3	18%
Boat fuel	\$14.5	24%
Auto fuel	\$11.0	18%
Repair & Maintenance	-	-
Marine supplies	-	-
Recreation & Entertainment	\$2.5	4%
Shopping	\$1.9	3%
Other services	-	-
Other goods	\$1.5	2%
<b>Total</b>	<b>\$61.8</b>	<b>100%</b>

**Table 3. Total Annual Craft Spending (not including purchases of boats) by Power and Sailboat Owners Registered in the Washington 3rd CD**

Category	Total (\$ Millions)	Percentage
Slip	\$9.5	15%
Loan Payments	\$19.9	32%
Replacement Motors	\$0.7	1%
Replacement Trailers	\$0.2	0%
Insurance	\$5.5	9%
Repairs	\$12.4	20%
Accessories	\$11.6	19%
Taxes	\$2.5	4%
<b>Total</b>	<b>\$62.2</b>	<b>100%</b>

**Table 4. Economic Significance of Trip Spending and Annual Craft Spending by Power and Sailboats Registered in the Washington 3rd CD**

	Trip Spending	Annual Craft Spending	Total
<b>Direct Effects</b>			
Sales (\$ Millions)	\$52.6	\$39.2	\$91.8
Jobs	547.7	453.5	1,001.2
Labor Income (\$ Millions)	\$15.7	\$15.1	\$30.9
Value Added (\$ Millions)	\$25.2	\$25.3	\$50.5
<b>Total Effects</b>			
Sales (\$ Millions)	\$141.3	\$99.5	\$240.8
Jobs	1,164.8	898.5	2,063.3
Labor Income (\$ Millions)	\$43.1	\$35.1	\$78.2
Value Added (\$ Millions)	\$72.9	\$58.6	\$131.4

**Table 5. Economic Significance of Power and Sailboats Registered in the Washington 3rd CD**

Sector/Spending category	Sales (\$ Millions)	Jobs	Labor Income (\$Millions)	Value Added (\$Millions)
<b>Direct Effects</b>				
Lodging	\$2.4	30.3	\$1.0	\$1.7
Marina Services	\$14.6	187.8	\$5.1	\$9.2
Restaurant	\$11.4	226.2	\$3.9	\$5.5
Recreation & Entertainment	\$2.5	32.5	\$0.9	\$1.6
Repair & Maintenance	\$12.4	155.3	\$4.6	\$6.5
Insurance & Credit	\$6.8	49.3	\$2.9	\$6.2
Gas Service	\$5.7	67.5	\$2.7	\$4.3
Other Retail Trade	\$8.9	167.3	\$4.3	\$7.0
Wholesale Trade	\$5.7	36.7	\$2.5	\$4.4
Other Local Production of Goods	\$21.3	48.3	\$2.9	\$4.1
<b>Total Direct Effects</b>	<b>\$91.8</b>	<b>1,001.2</b>	<b>\$30.9</b>	<b>\$50.5</b>
<b>Secondary Effects</b>	<b>\$149.0</b>	<b>1,062.1</b>	<b>\$47.4</b>	<b>\$80.9</b>
<b>Total Effects</b>	<b>\$240.8</b>	<b>2,063.3</b>	<b>\$78.2</b>	<b>\$131.4</b>

# The Washington 4th Congressional District

**Table 1. The Washington 4th Congressional District Description**

Area (square miles)	19,051
Navigable Waterbody (square miles)	365
Total Population (2007)	725,668
Population Density (per square mile) (2007)	37
Persons 18+ (2007)	526,145
Number of Households (2007)	251,855

**Table 2. Registered Boats Owned by Residents Residing in the Washington 4th Congressional District**

	4th CD	State Total
<b>Number of Registered Boats</b>	34,659	315,948
<b>Type of Registered Boats</b>		
Power Boats	29,546	263,729
Outboards	17,210	148,123
Inboards	1,976	28,244
Stern Drives	9,052	80,620
Jet Boats	1,308	6,742
Personal Watercraft	4,608	36,277
Sailboats	505	15,942
<b>Size of Registered Boats</b>		
≤ 15'	12,262	113,560
16'-24'	21,000	166,234
25'-39'	1,198	28,227
40' +	199	7,927
<b>Per Capita Ownership of Registered Boats</b>		
All Population	48/1000	49/1000
Persons 18 +	66/1000	67/1000
Households	138/1000	123/1000

**Table 3. Boating-related Businesses Based on NAICS Codes**

Category	4th CD	State Total
<b>Boat Building</b>		
No. of Businesses	3	102
No. of Employees	31	2,526
Total Sales (\$ Millions)	\$2.3	\$450.1
<b>Motors &amp; Engines Mfg.</b>		
No. of Businesses	1	1
No. of Employees	1	1
Total Sales (\$ Millions)	\$0.1	\$0.1
<b>Accessories &amp; Supplies Mfg.</b>		
No. of Businesses	1	36
No. of Employees	5	412
Total Sales (\$ Millions)	\$0.3	\$133.5
<b>Dealers &amp; Wholesalers</b>		
No. of Businesses	19	369
No. of Employees	81	1,558
Total Sales (\$ Millions)	\$16.8	\$393.9
<b>Boating Services</b>		
No. of Businesses	11	332
No. of Employees	192	1,907
Total Sales (\$ Millions)	\$5.7	\$136.3

Figure 1. Location of the Washington 4th Congressional District



Figure 2. Navigable Waters of the Washington 4th Congressional District



Figure 3. Number of Registered Boats by Zipcode within the Washington 4th Congressional District

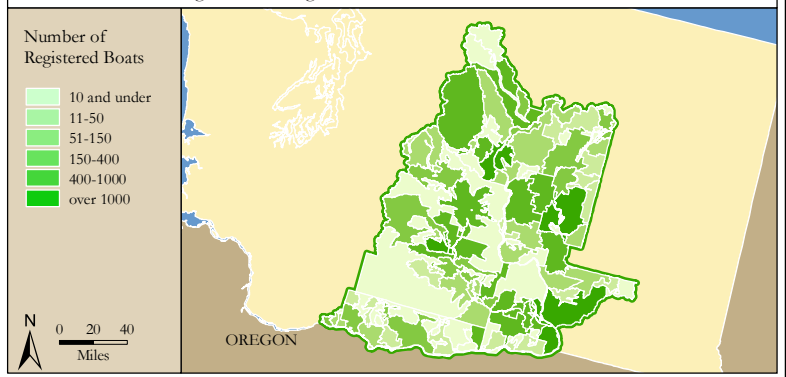
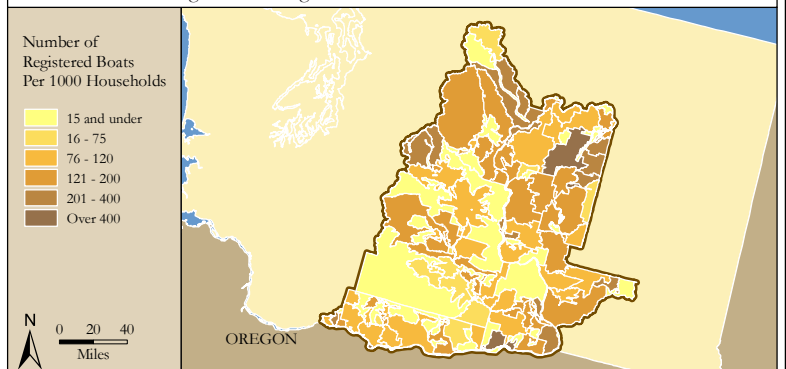


Figure 4. Per Capita (Household) Ownership of Registered Boats by Zipcode within the Washington 4th Congressional District



# Economic Significance of Boating

**Table 1. Craft and Trip Expenses by Power and Sailboats Registered in the Washington 4th Congressional District**

Category	Boat Type and Size								Total
	Power <15'	Power 16' - 24'	Power 25' - 39'	Power 40'+	Sail <15'	Sail 16' - 24'	Sail 25' - 39'	Sail 40+	
Number of boats (Thousands of boats)	7.6	20.8	1.0	0.2	0.1	0.2	0.2	0.0	30.1
Annual craft spending (\$ per boat per year)	\$457.9	\$1,655.6	\$7,464.6	\$25,299.0	\$488.7	\$1,830.2	\$7,439.8	\$18,328.8	
Total craft spending (\$ Millions)	\$3.5	\$34.4	\$7.4	\$4.3	\$0.0	\$0.4	\$1.5	\$0.5	\$52.1
Total boat days (Thousands of days)	123.7	520.6	30.4	7.3	1.1	4.1	6.5	1.4	695.0
Total trip spending (\$ per boat per year)	\$935.9	\$2,148.4	\$4,574.4	\$8,039.6	\$1,009.7	\$1,009.7	\$1,963.9	\$5,204.7	
Total trip spending (\$ Millions)	\$7.1	\$44.7	\$4.5	\$1.4	\$0.1	\$0.2	\$0.4	\$0.2	\$58.5
Total craft & trip spending (\$ Millions)	\$10.6	\$79.1	\$11.9	\$5.6	\$0.1	\$0.6	\$2.0	\$0.7	\$110.6

**Table 2. Total Spending on Boat Trips by Power and Sailboat Owners Registered in the Washington 4th CD**

Category	Total (\$ Millions)	Percentage
Lodging	\$2.5	4%
Marina services	\$4.6	8%
Restaurant	\$10.6	18%
Groceries	\$10.8	18%
Boat fuel	\$13.7	23%
Auto fuel	\$10.8	19%
Repair & Maintenance	-	-
Marine supplies	-	-
Recreation & Entertainment	\$2.4	4%
Shopping	\$1.7	3%
Other services	-	-
Other goods	\$1.5	3%
<b>Total</b>	<b>\$58.5</b>	<b>100%</b>

**Table 3. Total Annual Craft Spending (not including purchases of boats) by Power and Sailboat Owners Registered in the Washington 4th CD**

Category	Total (\$ Millions)	Percentage
Slip	\$7.2	14%
Loan Payments	\$16.9	33%
Replacement Motors	\$0.7	1%
Replacement Trailers	\$0.2	0%
Insurance	\$4.7	9%
Repairs	\$10.3	20%
Accessories	\$9.8	19%
Taxes	\$2.2	4%
<b>Total</b>	<b>\$52.1</b>	<b>100%</b>

**Table 4. Economic Significance of Trip Spending and Annual Craft Spending by Power and Sailboats Registered in the Washington 4th CD**

	Trip Spending	Annual Craft Spending	Total
<b>Direct Effects</b>			
Sales (\$ Millions)	\$49.4	\$32.4	\$81.9
Jobs	512.5	372.8	885.4
Labor Income (\$ Millions)	\$14.8	\$12.5	\$27.3
Value Added (\$ Millions)	\$23.7	\$21.0	\$44.7
<b>Total Effects</b>			
Sales (\$ Millions)	\$132.8	\$82.2	\$215.0
Jobs	1,092.4	739.8	1,832.2
Labor Income (\$ Millions)	\$40.6	\$29.0	\$69.6
Value Added (\$ Millions)	\$68.5	\$48.4	\$116.9

**Table 5. Economic Significance of Power and Sailboats Registered in the Washington 4th CD**

Sector/Spending category	Sales (\$ Millions)	Jobs	Labor Income (\$Millions)	Value Added (\$Millions)
<b>Direct Effects</b>				
Lodging	\$2.5	30.6	\$1.0	\$1.7
Marina Services	\$11.8	151.4	\$4.1	\$7.4
Restaurant	\$10.6	209.6	\$3.6	\$5.1
Recreation & Entertainment	\$2.4	30.5	\$0.8	\$1.5
Repair & Maintenance	\$10.3	128.9	\$3.8	\$5.4
Insurance & Credit	\$5.8	42.2	\$2.5	\$5.3
Gas Service	\$5.5	64.9	\$2.6	\$4.2
Other Retail Trade	\$8.0	149.2	\$3.9	\$6.3
Wholesale Trade	\$5.3	33.8	\$2.3	\$4.0
Other Local Production of Goods	\$19.8	44.1	\$2.7	\$3.8
<b>Total Direct Effects</b>	<b>\$81.9</b>	<b>885.4</b>	<b>\$27.3</b>	<b>\$44.7</b>
<b>Secondary Effects</b>	<b>\$133.1</b>	<b>946.8</b>	<b>\$42.2</b>	<b>\$72.2</b>
<b>Total Effects</b>	<b>\$215.0</b>	<b>1,832.2</b>	<b>\$69.6</b>	<b>\$116.9</b>



# The Washington 5th Congressional District

**Table 1. The Washington 5th Congressional District Description**

Area (square miles)	22,864
Navigable Waterbody (square miles)	304
Total Population (2007)	693,766
Population Density (per square mile) (2007)	30
Persons 18+ (2007)	537,761
Number of Households (2007)	278,479

**Table 2. Registered Boats Owned by Residents Residing in the Washington 5th Congressional District**

	5th CD	State Total
<b>Number of Registered Boats</b>	41,075	315,948
<b>Type of Registered Boats</b>		
Power Boats	34,959	263,729
Outboards	18,061	148,123
Inboards	2,862	28,244
Stern Drives	13,057	80,620
Jet Boats	979	6,742
Personal Watercraft	5,183	36,277
Sailboats	933	15,942
<b>Size of Registered Boats</b>		
≤ 15'	13,227	113,560
16'-24'	25,645	166,234
25'-39'	1,957	28,227
40' +	246	7,927
<b>Per Capita Ownership of Registered Boats</b>		
All Population	59/1000	49/1000
Persons 18 +	76/1000	67/1000
Households	147/1000	123/1000

**Table 3. Boating-related Businesses Based on NAICS Codes**

Category	5th CD	State Total
<b>Boat Building</b>		
No. of Businesses	8	102
No. of Employees	392	2,526
Total Sales (\$ Millions)	\$60.0	\$450.1
<b>Motors &amp; Engines Mfg.</b>		
No. of Businesses	-	1
No. of Employees	-	1
Total Sales (\$ Millions)	-	\$0.1
<b>Accessories &amp; Supplies Mfg.</b>		
No. of Businesses	4	36
No. of Employees	143	412
Total Sales (\$ Millions)	\$66.6	\$133.5
<b>Dealers &amp; Wholesalers</b>		
No. of Businesses	26	369
No. of Employees	133	1,558
Total Sales (\$ Millions)	\$26.8	\$393.9
<b>Boating Services</b>		
No. of Businesses	14	332
No. of Employees	83	1,907
Total Sales (\$ Millions)	\$7.0	\$136.3

Figure 1. Location of the Washington 5th Congressional District

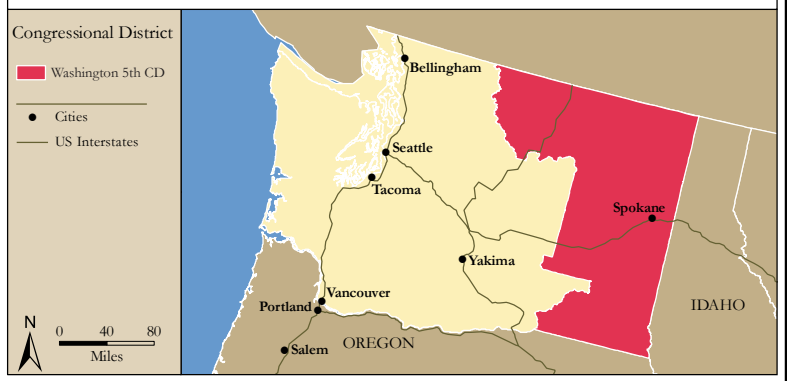


Figure 2. Navigable Waters of the Washington 5th Congressional District



Figure 3. Number of Registered Boats by Zipcode within the Washington 5th Congressional District

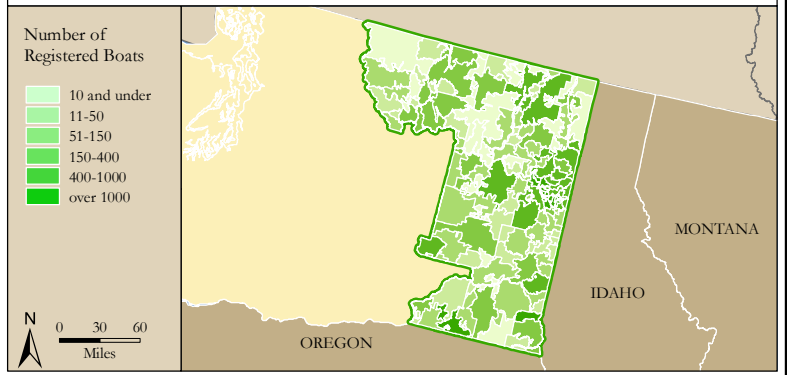
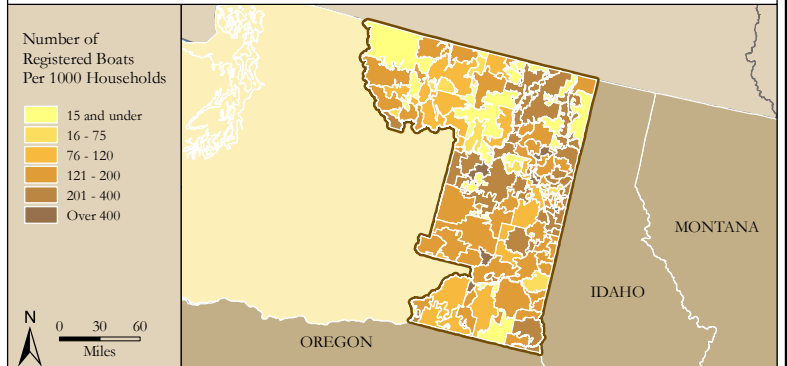


Figure 4. Per Capita (Household) Ownership of Registered Boats by Zipcode within the Washington 5th Congressional District



# Economic Significance of Boating

**Table 1. Craft and Trip Expenses by Power and Sailboats Registered in the Washington 5th Congressional District**

Category	Boat Type and Size								Total
	Power <15'	Power 16' - 24'	Power 25' - 39'	Power 40'+	Sail <15'	Sail 16' - 24'	Sail 25' - 39'	Sail 40+	
Number of boats (Thousands of boats)	7.9	25.3	1.6	0.2	0.1	0.4	0.4	0.0	35.9
Annual craft spending (\$ per boat per year)	\$457.9	\$1,655.6	\$7,464.6	\$25,299.0	\$488.7	\$1,830.2	\$7,439.8	\$18,328.8	
Total craft spending (\$ Millions)	\$3.6	\$41.8	\$11.8	\$5.3	\$0.1	\$0.7	\$2.8	\$0.7	\$66.8
Total boat days (Thousands of days)	128.8	632.3	48.6	9.1	2.5	7.5	11.7	1.7	842.3
Total trip spending (\$ per boat per year)	\$935.9	\$2,148.4	\$4,574.4	\$8,039.6	\$1,009.7	\$1,009.7	\$1,963.9	\$5,204.7	
Total trip spending (\$ Millions)	\$7.4	\$54.3	\$7.2	\$1.7	\$0.1	\$0.4	\$0.7	\$0.2	\$72.0
Total craft & trip spending (\$ Millions)	\$11.0	\$96.1	\$19.1	\$7.0	\$0.2	\$1.1	\$3.5	\$0.9	\$138.8

**Table 2. Total Spending on Boat Trips by Power and Sailboat Owners Registered in the Washington 5th CD**

Category	Total (\$ Millions)	Percentage
Lodging	\$3.0	4%
Marina services	\$5.7	8%
Restaurant	\$13.1	18%
Groceries	\$13.3	18%
Boat fuel	\$17.1	24%
Auto fuel	\$13.1	18%
Repair & Maintenance	-	-
Marine supplies	-	-
Recreation & Entertainment	\$2.9	4%
Shopping	\$2.1	3%
Other services	-	-
Other goods	\$1.8	2%
<b>Total</b>	<b>\$72.0</b>	<b>100%</b>

**Table 3. Total Annual Craft Spending (not including purchases of boats) by Power and Sailboat Owners Registered in the Washington 5th CD**

Category	Total (\$ Millions)	Percentage
Slip	\$9.6	14%
Loan Payments	\$21.8	33%
Replacement Motors	\$0.8	1%
Replacement Trailers	\$0.2	0%
Insurance	\$6.0	9%
Repairs	\$13.2	20%
Accessories	\$12.5	19%
Taxes	\$2.7	4%
<b>Total</b>	<b>\$66.8</b>	<b>100%</b>

**Table 4. Economic Significance of Trip Spending and Annual Craft Spending by Power and Sailboats Registered in the Washington 5th CD**

	Trip Spending	Annual Craft Spending	Total
<b>Direct Effects</b>			
Sales (\$ Millions)	\$61.1	\$41.6	\$102.7
Jobs	632.5	479.6	1,112.1
Labor Income (\$ Millions)	\$18.2	\$16.1	\$34.3
Value Added (\$ Millions)	\$29.2	\$26.9	\$56.1
<b>Total Effects</b>			
Sales (\$ Millions)	\$164.0	\$105.5	\$269.5
Jobs	1,348.2	951.1	2,299.3
Labor Income (\$ Millions)	\$50.1	\$37.2	\$87.3
Value Added (\$ Millions)	\$84.5	\$62.1	\$146.7

**Table 5. Economic Significance of Power and Sailboats Registered in the Washington 5th CD**

Sector/Spending category	Sales (\$ Millions)	Jobs	Labor Income (\$Millions)	Value Added (\$Millions)
<b>Direct Effects</b>				
Lodging	\$3.0	37.1	\$1.2	\$2.1
Marina Services	\$15.3	196.2	\$5.3	\$9.6
Restaurant	\$13.1	260.0	\$4.5	\$6.3
Recreation & Entertainment	\$2.9	37.1	\$1.0	\$1.8
Repair & Maintenance	\$13.2	165.2	\$4.9	\$6.9
Insurance & Credit	\$7.4	53.5	\$3.2	\$6.8
Gas Service	\$6.7	79.9	\$3.2	\$5.1
Other Retail Trade	\$9.9	186.3	\$4.8	\$7.8
Wholesale Trade	\$6.5	42.0	\$2.8	\$5.0
Other Local Production of Goods	\$24.6	54.8	\$3.4	\$4.7
<b>Total Direct Effects</b>	<b>\$102.7</b>	<b>1,112.1</b>	<b>\$34.3</b>	<b>\$56.1</b>
<b>Secondary Effects</b>	<b>\$166.8</b>	<b>1,187.2</b>	<b>\$53.0</b>	<b>\$90.6</b>
<b>Total Effects</b>	<b>\$269.5</b>	<b>2,299.3</b>	<b>\$87.3</b>	<b>\$146.7</b>

# The Washington 6th Congressional District

**Table 1. The Washington 6th Congressional District Description**

Area (square miles)	6,781
Navigable Waterbody (square miles)	336
Total Population (2007)	700,565
Population Density (per square mile) (2007)	102
Persons 18+ (2007)	547,099
Number of Households (2007)	282,034

**Table 2. Registered Boats Owned by Residents Residing in the Washington 6th Congressional District**

	6th CD	State Total
<b>Number of Registered Boats</b>	36,164	315,948
<b>Type of Registered Boats</b>		
Power Boats	30,673	263,729
Outboards	19,709	148,123
Inboards	3,063	28,244
Stern Drives	7,371	80,620
Jet Boats	530	6,742
Personal Watercraft	3,112	36,277
Sailboats	2,379	15,942
<b>Size of Registered Boats</b>		
≤ 15'	14,410	113,560
16'-24'	16,888	166,234
25'-39'	3,667	28,227
40' +	1,199	7,927
<b>Per Capita Ownership of Registered Boats</b>		
All Population	52/1000	49/1000
Persons 18 +	66/1000	67/1000
Households	128/1000	123/1000

**Table 3. Boating-related Businesses Based on NAICS Codes**

Category	6th CD	State Total
<b>Boat Building</b>		
No. of Businesses	15	102
No. of Employees	142	2,526
Total Sales (\$ Millions)	\$12.0	\$450.1
<b>Motors &amp; Engines Mfg.</b>		
No. of Businesses	-	1
No. of Employees	-	1
Total Sales (\$ Millions)	-	\$0.1
<b>Accessories &amp; Supplies Mfg.</b>		
No. of Businesses	5	36
No. of Employees	26	412
Total Sales (\$ Millions)	\$1.0	\$133.5
<b>Dealers &amp; Wholesalers</b>		
No. of Businesses	44	369
No. of Employees	134	1,558
Total Sales (\$ Millions)	\$80.1	\$393.9
<b>Boating Services</b>		
No. of Businesses	55	332
No. of Employees	526	1,907
Total Sales (\$ Millions)	\$29.7	\$136.3

Figure 1. Location of the Washington 6th Congressional District



Figure 2. Navigable Waters of the Washington 6th Congressional District

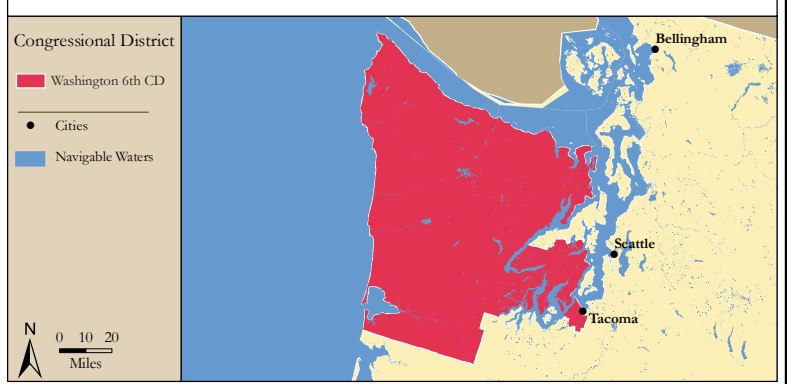


Figure 3. Number of Registered Boats by Zipcode within the Washington 6th Congressional District

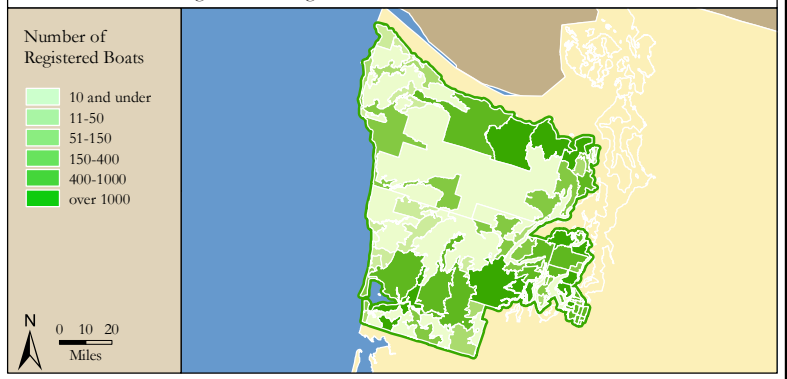
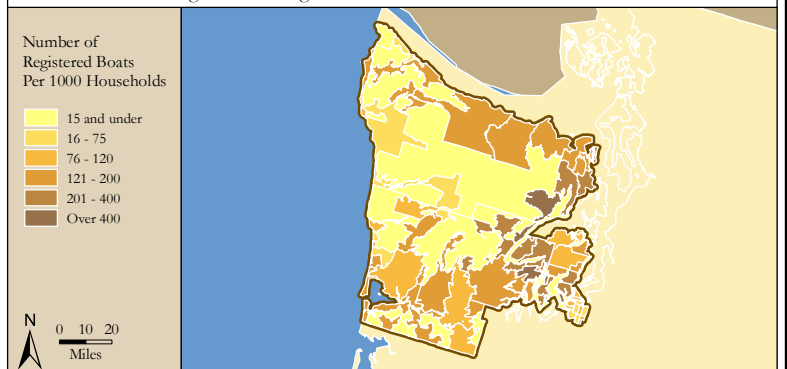


Figure 4. Per Capita (Household) Ownership of Registered Boats by Zipcode within the Washington 6th Congressional District



# Economic Significance of Boating

**Table 1. Craft and Trip Expenses by Power and Sailboats Registered in the Washington 6th Congressional District**

Category	Boat Type and Size								Total
	Power <15'	Power 16' - 24'	Power 25' - 39'	Power 40'+	Sail <15'	Sail 16' - 24'	Sail 25' - 39'	Sail 40+	
Number of boats (Thousands of boats)	11.2	16.3	2.3	0.9	0.1	0.6	1.4	0.3	33.1
Annual craft spending (\$ per boat per year)	\$457.9	\$1,655.6	\$7,464.6	\$25,299.0	\$488.7	\$1,830.2	\$7,439.8	\$18,328.8	
Total craft spending (\$ Millions)	\$5.1	\$26.9	\$17.2	\$23.2	\$0.1	\$1.1	\$10.2	\$5.2	\$89.0
Total boat days (Thousands of days)	182.0	407.6	70.6	39.9	2.3	11.8	42.9	12.9	769.9
Total trip spending (\$ per boat per year)	\$935.9	\$2,148.4	\$4,574.4	\$8,039.6	\$1,009.7	\$1,009.7	\$1,963.9	\$5,204.7	
Total trip spending (\$ Millions)	\$10.5	\$35.0	\$10.5	\$7.4	\$0.1	\$0.6	\$2.7	\$1.5	\$68.2
Total craft & trip spending (\$ Millions)	\$15.6	\$61.9	\$27.7	\$30.6	\$0.2	\$1.7	\$12.8	\$6.6	\$157.2

**Table 2. Total Spending on Boat Trips by Power and Sailboat Owners Registered in the Washington 6th CD**

Category	Total (\$ Millions)	Percentage
Lodging	\$2.3	3%
Marina services	\$6.5	10%
Restaurant	\$13.1	19%
Groceries	\$12.4	18%
Boat fuel	\$16.6	24%
Auto fuel	\$10.7	16%
Repair & Maintenance	-	-
Marine supplies	-	-
Recreation & Entertainment	\$2.8	4%
Shopping	\$2.2	3%
Other services	-	-
Other goods	\$1.6	2%
<b>Total</b>	<b>\$68.2</b>	<b>100%</b>

**Table 3. Total Annual Craft Spending (not including purchases of boats) by Power and Sailboat Owners Registered in the Washington 6th CD**

Category	Total (\$ Millions)	Percentage
Slip	\$15.0	17%
Loan Payments	\$28.5	32%
Replacement Motors	\$0.7	1%
Replacement Trailers	\$0.2	0%
Insurance	\$7.6	9%
Repairs	\$17.8	20%
Accessories	\$15.7	18%
Taxes	\$3.5	4%
<b>Total</b>	<b>\$89.0</b>	<b>100%</b>

**Table 4. Economic Significance of Trip Spending and Annual Craft Spending by Power and Sailboats Registered in the Washington 6th CD**

	Trip Spending	Annual Craft Spending	Total
<b>Direct Effects</b>			
Sales (\$ Millions)	\$59.0	\$56.3	\$115.2
Jobs	616.7	654.7	1,271.4
Labor Income (\$ Millions)	\$17.5	\$21.7	\$39.2
Value Added (\$ Millions)	\$28.1	\$36.3	\$64.4
<b>Total Effects</b>			
Sales (\$ Millions)	\$158.5	\$142.8	\$301.3
Jobs	1,308.4	1,294.5	2,602.9
Labor Income (\$ Millions)	\$48.3	\$50.3	\$98.6
Value Added (\$ Millions)	\$81.6	\$84.1	\$165.6

**Table 5. Economic Significance of Power and Sailboats Registered in the Washington 6th CD**

Sector/Spending category	Sales (\$ Millions)	Jobs	Labor Income (\$Millions)	Value Added (\$Millions)
<b>Direct Effects</b>				
Lodging	\$2.3	28.6	\$0.9	\$1.6
Marina Services	\$21.5	276.1	\$7.5	\$13.5
Restaurant	\$13.1	259.6	\$4.5	\$6.3
Recreation & Entertainment	\$2.8	35.4	\$1.0	\$1.7
Repair & Maintenance	\$17.8	222.3	\$6.6	\$9.3
Insurance & Credit	\$9.5	68.4	\$4.1	\$8.7
Gas Service	\$6.1	72.4	\$2.9	\$4.6
Other Retail Trade	\$10.9	208.1	\$5.4	\$8.7
Wholesale Trade	\$6.7	43.2	\$2.9	\$5.1
Other Local Production of Goods	\$24.5	57.2	\$3.5	\$4.8
<b>Total Direct Effects</b>	<b>\$115.2</b>	<b>1,271.4</b>	<b>\$39.2</b>	<b>\$64.4</b>
<b>Secondary Effects</b>	<b>\$186.0</b>	<b>1,331.5</b>	<b>\$59.4</b>	<b>\$101.2</b>
<b>Total Effects</b>	<b>\$301.3</b>	<b>2,602.9</b>	<b>\$98.6</b>	<b>\$165.6</b>

# The Washington 7th Congressional District

**Table 1. The Washington 7th Congressional District Description**

Area (square miles)	141
Navigable Waterbody (square miles)	30
Total Population (2007)	666,200
Population Density (per square mile) (2007)	4,142
Persons 18+ (2007)	555,155
Number of Households (2007)	305,057

**Table 2. Registered Boats Owned by Residents Residing in the Washington 7th Congressional District**

	7th CD	State Total
<b>Number of Registered Boats</b>	20,235	315,948
<b>Type of Registered Boats</b>		
Power Boats	16,132	263,729
Outboards	8,412	148,123
Inboards	2,769	28,244
Stern Drives	4,789	80,620
Jet Boats	162	6,742
Personal Watercraft	1,317	36,277
Sailboats	2,786	15,942
<b>Size of Registered Boats</b>		
≤ 15'	6,340	113,560
16'-24'	8,631	166,234
25'-39'	3,695	28,227
40' +	1,569	7,927
<b>Per Capita Ownership of Registered Boats</b>		
All Population	30/1000	49/1000
Persons 18 +	36/1000	67/1000
Households	66/1000	123/1000

**Table 3. Boating-related Businesses Based on NAICS Codes**

Category	7th CD	State Total
<b>Boat Building</b>		
No. of Businesses	24	102
No. of Employees	511	2,526
Total Sales (\$ Millions)	\$84.3	\$450.1
<b>Motors &amp; Engines Mfg.</b>		
No. of Businesses	-	1
No. of Employees	-	1
Total Sales (\$ Millions)	-	\$0.1
<b>Accessories &amp; Supplies Mfg.</b>		
No. of Businesses	2	36
No. of Employees	3	412
Total Sales (\$ Millions)	\$0.2	\$133.5
<b>Dealers &amp; Wholesalers</b>		
No. of Businesses	73	369
No. of Employees	328	1,558
Total Sales (\$ Millions)	\$74.3	\$393.9
<b>Boating Services</b>		
No. of Businesses	85	332
No. of Employees	397	1,907
Total Sales (\$ Millions)	\$27.5	\$136.3

Figure 1. Location of the Washington 7th Congressional District



Figure 2. Navigable Waters of the Washington 7th Congressional District

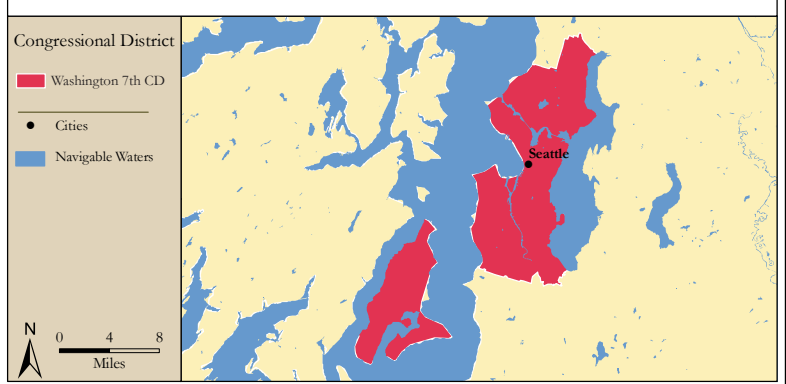


Figure 3. Number of Registered Boats by Zipcode within the Washington 7th Congressional District

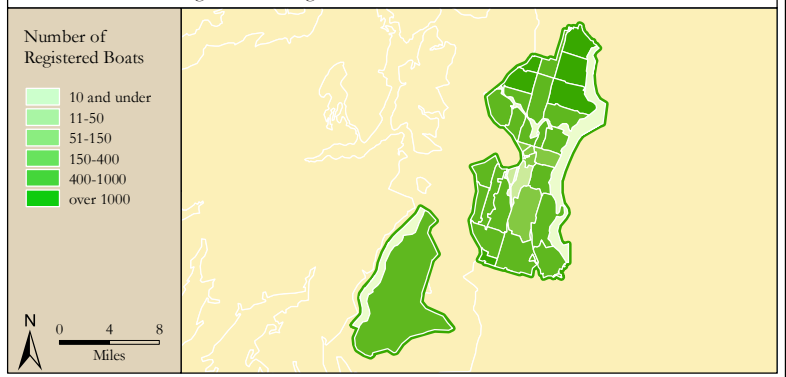
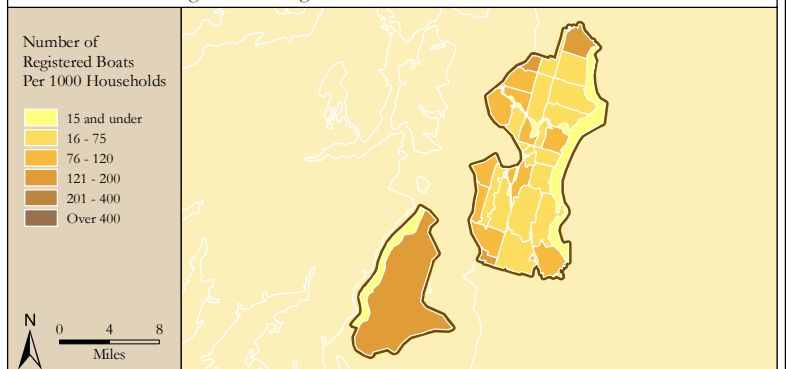


Figure 4. Per Capita (Household) Ownership of Registered Boats by Zipcode within the Washington 7th Congressional District



# Economic Significance of Boating

**Table 1. Craft and Trip Expenses by Power and Sailboats Registered in the Washington 7th Congressional District**

Category	Boat Type and Size								Total
	Power <15'	Power 16' - 24'	Power 25' - 39'	Power 40'+	Sail <15'	Sail 16' - 24'	Sail 25' - 39'	Sail 40+	
Number of boats (Thousands of boats)	4.9	8.0	2.1	1.2	0.1	0.6	1.6	0.4	18.9
Annual craft spending (\$ per boat per year)	\$457.9	\$1,655.6	\$7,464.6	\$25,299.0	\$488.7	\$1,830.2	\$7,439.8	\$18,328.8	
Total craft spending (\$ Millions)	\$2.2	\$13.2	\$15.4	\$29.7	\$0.1	\$1.2	\$12.1	\$7.3	\$81.2
Total boat days (Thousands of days)	80.0	199.9	63.4	51.0	2.2	12.5	51.2	18.1	478.2
Total trip spending (\$ per boat per year)	\$935.9	\$2,148.4	\$4,574.4	\$8,039.6	\$1,009.7	\$1,009.7	\$1,963.9	\$5,204.7	
Total trip spending (\$ Millions)	\$4.6	\$17.2	\$9.5	\$9.4	\$0.1	\$0.7	\$3.2	\$2.1	\$46.7
Total craft & trip spending (\$ Millions)	\$6.8	\$30.4	\$24.9	\$39.1	\$0.2	\$1.8	\$15.3	\$9.3	\$127.8

**Table 2. Total Spending on Boat Trips by Power and Sailboat Owners Registered in the Washington 7th CD**

Category	Total (\$ Millions)	Percentage
Lodging	\$1.3	3%
Marina services	\$5.2	11%
Restaurant	\$9.5	20%
Groceries	\$8.4	18%
Boat fuel	\$11.9	25%
Auto fuel	\$6.0	13%
Repair & Maintenance	-	-
Marine supplies	-	-
Recreation & Entertainment	\$1.8	4%
Shopping	\$1.6	3%
Other services	-	-
Other goods	\$1.1	2%
<b>Total</b>	<b>\$46.7</b>	<b>100%</b>

**Table 3. Total Annual Craft Spending (not including purchases of boats) by Power and Sailboat Owners Registered in the Washington 7th CD**

Category	Total (\$ Millions)	Percentage
Slip	\$14.8	18%
Loan Payments	\$26.1	32%
Replacement Motors	\$0.4	1%
Replacement Trailers	\$0.1	0%
Insurance	\$6.7	8%
Repairs	\$16.3	20%
Accessories	\$13.7	17%
Taxes	\$3.1	4%
<b>Total</b>	<b>\$81.2</b>	<b>100%</b>

**Table 4. Economic Significance of Trip Spending and Annual Craft Spending by Power and Sailboats Registered in the Washington 7th CD**

	Trip Spending	Annual Craft Spending	Total
<b>Direct Effects</b>			
Sales (\$ Millions)	\$41.2	\$51.5	\$92.7
Jobs	433.3	601.8	1,035.1
Labor Income (\$ Millions)	\$12.2	\$19.8	\$31.9
Value Added (\$ Millions)	\$19.5	\$33.2	\$52.7
<b>Total Effects</b>			
Sales (\$ Millions)	\$110.8	\$130.7	\$241.5
Jobs	916.8	1,187.9	2,104.7
Labor Income (\$ Millions)	\$33.7	\$46.0	\$79.7
Value Added (\$ Millions)	\$56.9	\$76.9	\$133.8

**Table 5. Economic Significance of Power and Sailboats Registered in the Washington 7th CD**

Sector/Spending category	Sales (\$ Millions)	Jobs	Labor Income (\$Millions)	Value Added (\$Millions)
<b>Direct Effects</b>				
Lodging	\$1.3	15.9	\$0.5	\$0.9
Marina Services	\$19.9	256.0	\$7.0	\$12.5
Restaurant	\$9.5	187.3	\$3.2	\$4.5
Recreation & Entertainment	\$1.8	23.3	\$0.6	\$1.1
Repair & Maintenance	\$16.3	203.1	\$6.0	\$8.5
Insurance & Credit	\$8.4	60.8	\$3.6	\$7.7
Gas Service	\$4.0	47.3	\$1.9	\$3.0
Other Retail Trade	\$8.6	166.0	\$4.3	\$6.9
Wholesale Trade	\$5.0	32.2	\$2.2	\$3.8
Other Local Production of Goods	\$17.9	43.2	\$2.6	\$3.6
<b>Total Direct Effects</b>	<b>\$92.7</b>	<b>1,035.1</b>	<b>\$31.9</b>	<b>\$52.7</b>
<b>Secondary Effects</b>	<b>\$148.8</b>	<b>1,069.6</b>	<b>\$47.7</b>	<b>\$81.1</b>
<b>Total Effects</b>	<b>\$241.5</b>	<b>2,104.7</b>	<b>\$79.7</b>	<b>\$133.8</b>

# The Washington 8th Congressional District

**Table 1. The Washington 8th Congressional District Description**

Area (square miles)	2,579
Navigable Waterbody (square miles)	98
Total Population (2007)	733,607
Population Density (per square mile) (2007)	280
Persons 18+ (2007)	546,397
Number of Households (2007)	274,104

**Table 2. Registered Boats Owned by Residents Residing in the Washington 8th Congressional District**

	8th CD	State Total
<b>Number of Registered Boats</b>	36,108	315,948
<b>Type of Registered Boats</b>		
Power Boats	29,433	263,729
Outboards	13,781	148,123
Inboards	4,282	28,244
Stern Drives	10,724	80,620
Jet Boats	646	6,742
Personal Watercraft	5,198	36,277
Sailboats	1,477	15,942
<b>Size of Registered Boats</b>		
≤ 15'	12,409	113,560
16'-24'	19,268	166,234
25'-39'	3,373	28,227
40' +	1,058	7,927
<b>Per Capita Ownership of Registered Boats</b>		
All Population	49/1000	49/1000
Persons 18 +	66/1000	67/1000
Households	132/1000	123/1000

**Table 3. Boating-related Businesses Based on NAICS Codes**

Category	8th CD	State Total
<b>Boat Building</b>		
No. of Businesses	2	102
No. of Employees	2	2,526
Total Sales (\$ Millions)	\$0.1	\$450.1
<b>Motors &amp; Engines Mfg.</b>		
No. of Businesses	-	1
No. of Employees	-	1
Total Sales (\$ Millions)	-	\$0.1
<b>Accessories &amp; Supplies Mfg.</b>		
No. of Businesses	2	36
No. of Employees	2	412
Total Sales (\$ Millions)	\$0.2	\$133.5
<b>Dealers &amp; Wholesalers</b>		
No. of Businesses	19	369
No. of Employees	86	1,558
Total Sales (\$ Millions)	\$23.5	\$393.9
<b>Boating Services</b>		
No. of Businesses	10	332
No. of Employees	34	1,907
Total Sales (\$ Millions)	\$2.4	\$136.3

Figure 1. Location of the Washington 8th Congressional District



Figure 2. Navigable Waters of the Washington 8th Congressional District

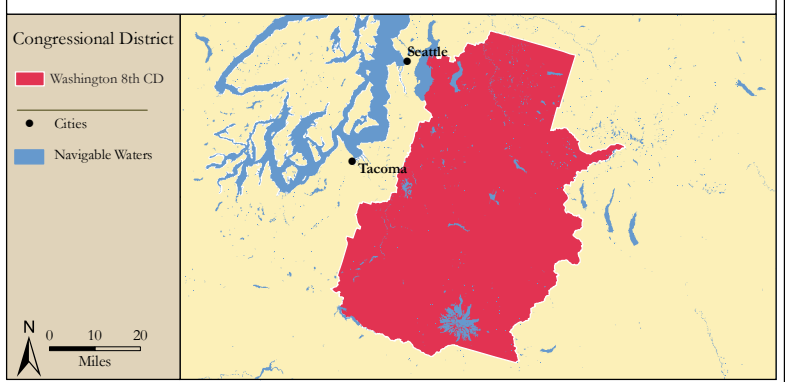


Figure 3. Number of Registered Boats by Zipcode within the Washington 8th Congressional District

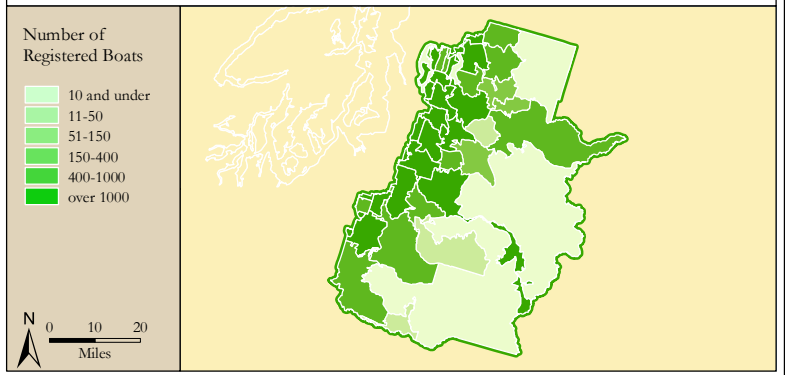
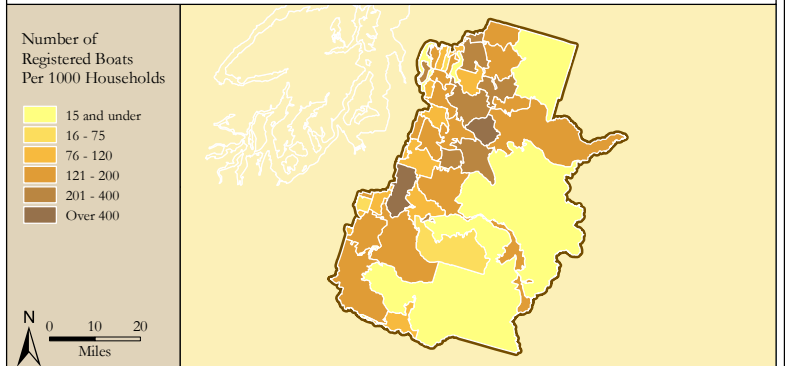


Figure 4. Per Capita (Household) Ownership of Registered Boats by Zipcode within the Washington 8th Congressional District



# Economic Significance of Boating

**Table 1. Craft and Trip Expenses by Power and Sailboats Registered in the Washington 8th Congressional District**

Category	Boat Type and Size								Total
	Power <15'	Power 16' - 24'	Power 25' - 39'	Power 40'+	Sail <15'	Sail 16' - 24'	Sail 25' - 39'	Sail 40+	
Number of boats (Thousands of boats)	7.1	18.9	2.6	0.9	0.1	0.4	0.8	0.2	30.9
Annual craft spending (\$ per boat per year)	\$457.9	\$1,655.6	\$7,464.6	\$25,299.0	\$488.7	\$1,830.2	\$7,439.8	\$18,328.8	
Total craft spending (\$ Millions)	\$3.3	\$31.2	\$19.1	\$22.0	\$0.0	\$0.7	\$6.1	\$3.4	\$85.9
Total boat days (Thousands of days)	116.2	472.6	78.3	37.9	1.5	7.6	25.7	8.5	748.3
Total trip spending (\$ per boat per year)	\$935.9	\$2,148.4	\$4,574.4	\$8,039.6	\$1,009.7	\$1,009.7	\$1,963.9	\$5,204.7	
Total trip spending (\$ Millions)	\$6.7	\$40.5	\$11.7	\$7.0	\$0.1	\$0.4	\$1.6	\$1.0	\$69.0
Total craft & trip spending (\$ Millions)	\$9.9	\$71.8	\$30.7	\$29.0	\$0.1	\$1.1	\$7.7	\$4.4	\$154.9

**Table 2. Total Spending on Boat Trips by Power and Sailboat Owners Registered in the Washington 8th CD**

Category	Total (\$ Millions)	Percentage
Lodging	\$2.4	4%
Marina services	\$6.3	9%
Restaurant	\$13.1	19%
Groceries	\$12.5	18%
Boat fuel	\$17.4	25%
Auto fuel	\$10.8	16%
Repair & Maintenance	-	-
Marine supplies	-	-
Recreation & Entertainment	\$2.7	4%
Shopping	\$2.1	3%
Other services	-	-
Other goods	\$1.6	2%
<b>Total</b>	<b>\$69.0</b>	<b>100%</b>

**Table 3. Total Annual Craft Spending (not including purchases of boats) by Power and Sailboat Owners Registered in the Washington 8th CD**

Category	Total (\$ Millions)	Percentage
Slip	\$13.8	16%
Loan Payments	\$28.5	33%
Replacement Motors	\$0.7	1%
Replacement Trailers	\$0.2	0%
Insurance	\$7.4	9%
Repairs	\$16.9	20%
Accessories	\$14.9	17%
Taxes	\$3.5	4%
<b>Total</b>	<b>\$85.9</b>	<b>100%</b>

**Table 4. Economic Significance of Trip Spending and Annual Craft Spending by Power and Sailboats Registered in the Washington 8th CD**

	Trip Spending	Annual Craft Spending	Total
<b>Direct Effects</b>			
Sales (\$ Millions)	\$59.6	\$53.4	\$113.0
Jobs	616.7	619.1	1,235.8
Labor Income (\$ Millions)	\$17.6	\$20.6	\$38.2
Value Added (\$ Millions)	\$28.2	\$34.5	\$62.8
<b>Total Effects</b>			
Sales (\$ Millions)	\$159.9	\$135.4	\$295.3
Jobs	1,312.8	1,225.0	2,537.9
Labor Income (\$ Millions)	\$48.6	\$47.7	\$96.3
Value Added (\$ Millions)	\$82.2	\$79.7	\$161.9

**Table 5. Economic Significance of Power and Sailboats Registered in the Washington 8th CD**

Sector/Spending category	Sales (\$ Millions)	Jobs	Labor Income (\$Millions)	Value Added (\$Millions)
<b>Direct Effects</b>				
Lodging	\$2.4	30.1	\$1.0	\$1.7
Marina Services	\$20.1	258.6	\$7.0	\$12.7
Restaurant	\$13.1	258.5	\$4.4	\$6.3
Recreation & Entertainment	\$2.7	34.6	\$0.9	\$1.7
Repair & Maintenance	\$16.9	211.7	\$6.3	\$8.8
Insurance & Credit	\$9.3	66.8	\$4.0	\$8.5
Gas Service	\$6.3	74.8	\$3.0	\$4.8
Other Retail Trade	\$10.6	201.5	\$5.2	\$8.5
Wholesale Trade	\$6.7	42.8	\$2.9	\$5.1
Other Local Production of Goods	\$24.8	56.2	\$3.4	\$4.8
<b>Total Direct Effects</b>	<b>\$113.0</b>	<b>1,235.8</b>	<b>\$38.2</b>	<b>\$62.8</b>
<b>Secondary Effects</b>	<b>\$182.3</b>	<b>1,302.1</b>	<b>\$58.1</b>	<b>\$99.1</b>
<b>Total Effects</b>	<b>\$295.3</b>	<b>2,537.9</b>	<b>\$96.3</b>	<b>\$161.9</b>



# The Washington 9th Congressional District

**Table 1. The Washington 9th Congressional District Description**

Area (square miles)	608
Navigable Waterbody (square miles)	62
Total Population (2007)	707,960
Population Density (per square mile) (2007)	1,139
Persons 18+ (2007)	539,089
Number of Households (2007)	272,765

**Table 2. Registered Boats Owned by Residents Residing in the Washington 9th Congressional District**

	9th CD	State Total
<b>Number of Registered Boats</b>	30,882	315,948
<b>Type of Registered Boats</b>		
Power Boats	25,085	263,729
Outboards	13,787	148,123
Inboards	2,708	28,244
Stern Drives	7,969	80,620
Jet Boats	621	6,742
Personal Watercraft	4,524	36,277
Sailboats	1,273	15,942
<b>Size of Registered Boats</b>		
≤ 15'	11,623	113,560
16'-24'	16,248	166,234
25'-39'	2,435	28,227
40' +	576	7,927
<b>Per Capita Ownership of Registered Boats</b>		
All Population	44/1000	49/1000
Persons 18 +	57/1000	67/1000
Households	113/1000	123/1000

**Table 3. Boating-related Businesses Based on NAICS Codes**

Category	9th CD	State Total
<b>Boat Building</b>		
No. of Businesses	10	102
No. of Employees	172	2,526
Total Sales (\$ Millions)	\$38.4	\$450.1
<b>Motors &amp; Engines Mfg.</b>		
No. of Businesses	-	1
No. of Employees	-	1
Total Sales (\$ Millions)	-	\$0.1
<b>Accessories &amp; Supplies Mfg.</b>		
No. of Businesses	5	36
No. of Employees	68	412
Total Sales (\$ Millions)	\$11.1	\$133.5
<b>Dealers &amp; Wholesalers</b>		
No. of Businesses	36	369
No. of Employees	206	1,558
Total Sales (\$ Millions)	\$47.7	\$393.9
<b>Boating Services</b>		
No. of Businesses	26	332
No. of Employees	69	1,907
Total Sales (\$ Millions)	\$6.1	\$136.3

Figure 1. Location of the Washington 9th Congressional District



Figure 2. Navigable Waters of the Washington 9th Congressional District

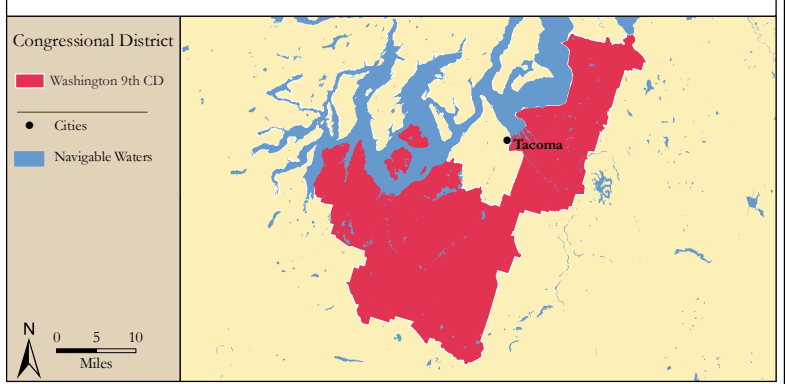


Figure 3. Number of Registered Boats by Zipcode within the Washington 9th Congressional District

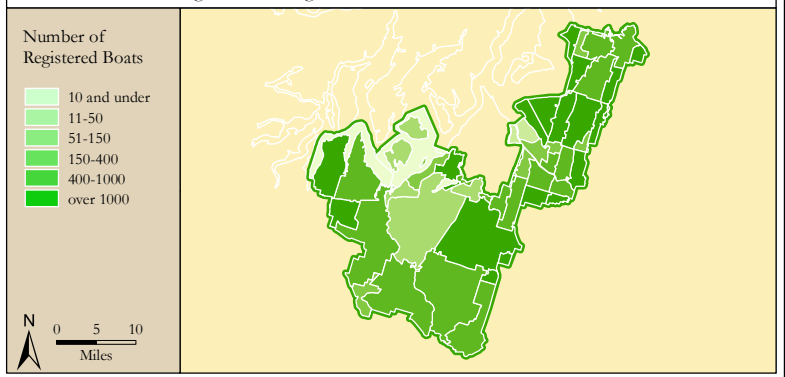
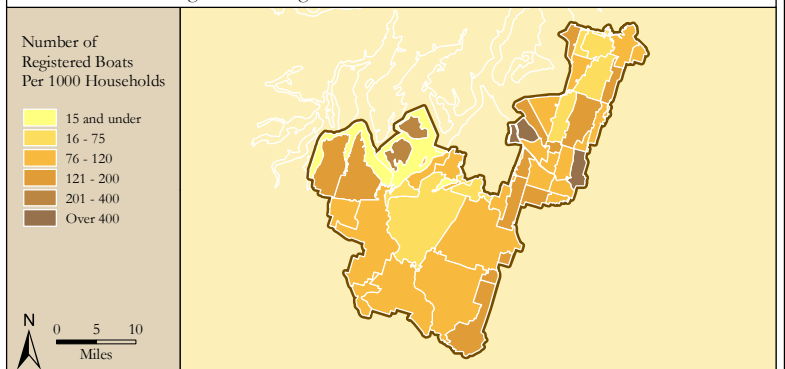


Figure 4. Per Capita (Household) Ownership of Registered Boats by Zipcode within the Washington 9th Congressional District



# Economic Significance of Boating

**Table 1. Craft and Trip Expenses by Power and Sailboats Registered in the Washington 9th Congressional District**

Category	Boat Type and Size								Total
	Power <15'	Power 16' - 24'	Power 25' - 39'	Power 40'+	Sail <15'	Sail 16' - 24'	Sail 25' - 39'	Sail 40+	
Number of boats (Thousands of boats)	7.0	15.9	1.7	0.5	0.1	0.3	0.7	0.1	26.4
Annual craft spending (\$ per boat per year)	\$457.9	\$1,655.6	\$7,464.6	\$25,299.0	\$488.7	\$1,830.2	\$7,439.8	\$18,328.8	
Total craft spending (\$ Millions)	\$3.2	\$26.3	\$12.6	\$11.8	\$0.0	\$0.6	\$5.5	\$2.0	\$62.2
Total boat days (Thousands of days)	114.3	398.3	52.0	20.2	1.5	6.6	23.3	5.1	621.2
Total trip spending (\$ per boat per year)	\$935.9	\$2,148.4	\$4,574.4	\$8,039.6	\$1,009.7	\$1,009.7	\$1,963.9	\$5,204.7	
Total trip spending (\$ Millions)	\$6.6	\$34.2	\$7.7	\$3.7	\$0.1	\$0.3	\$1.5	\$0.6	\$54.7
Total craft & trip spending (\$ Millions)	\$9.8	\$60.5	\$20.4	\$15.5	\$0.1	\$1.0	\$7.0	\$2.6	\$116.9

**Table 2. Total Spending on Boat Trips by Power and Sailboat Owners Registered in the Washington 9th CD**

Category	Total (\$ Millions)	Percentage
Lodging	\$2.0	4%
Marina services	\$4.8	9%
Restaurant	\$10.3	19%
Groceries	\$10.0	18%
Boat fuel	\$13.3	24%
Auto fuel	\$9.1	17%
Repair & Maintenance	-	-
Marine supplies	-	-
Recreation & Entertainment	\$2.2	4%
Shopping	\$1.7	3%
Other services	-	-
Other goods	\$1.3	2%
<b>Total</b>	<b>\$54.7</b>	<b>100%</b>

**Table 3. Total Annual Craft Spending (not including purchases of boats) by Power and Sailboat Owners Registered in the Washington 9th CD**

Category	Total (\$ Millions)	Percentage
Slip	\$9.9	16%
Loan Payments	\$20.1	32%
Replacement Motors	\$0.6	1%
Replacement Trailers	\$0.1	0%
Insurance	\$5.4	9%
Repairs	\$12.4	20%
Accessories	\$11.1	18%
Taxes	\$2.5	4%
<b>Total</b>	<b>\$62.2</b>	<b>100%</b>

**Table 4. Economic Significance of Trip Spending and Annual Craft Spending by Power and Sailboats Registered in the Washington 9th CD**

	Trip Spending	Annual Craft Spending	Total
<b>Direct Effects</b>			
Sales (\$ Millions)	\$46.9	\$39.0	\$85.9
Jobs	487.4	452.5	939.8
Labor Income (\$ Millions)	\$14.0	\$15.0	\$29.0
Value Added (\$ Millions)	\$22.3	\$25.2	\$47.6
<b>Total Effects</b>			
Sales (\$ Millions)	\$126.0	\$99.0	\$225.0
Jobs	1,036.8	895.6	1,932.4
Labor Income (\$ Millions)	\$38.4	\$34.9	\$73.3
Value Added (\$ Millions)	\$64.8	\$58.3	\$123.1

**Table 5. Economic Significance of Power and Sailboats Registered in the Washington 9th CD**

Sector/Spending category	Sales (\$ Millions)	Jobs	Labor Income (\$Millions)	Value Added (\$Millions)
<b>Direct Effects</b>				
Lodging	\$2.0	25.2	\$0.8	\$1.4
Marina Services	\$14.7	189.1	\$5.2	\$9.3
Restaurant	\$10.3	203.1	\$3.5	\$4.9
Recreation & Entertainment	\$2.2	28.0	\$0.8	\$1.4
Repair & Maintenance	\$12.4	154.5	\$4.6	\$6.4
Insurance & Credit	\$6.7	48.5	\$2.9	\$6.1
Gas Service	\$5.0	59.4	\$2.4	\$3.8
Other Retail Trade	\$8.2	154.9	\$4.0	\$6.5
Wholesale Trade	\$5.2	33.3	\$2.2	\$4.0
Other Local Production of Goods	\$19.3	43.8	\$2.7	\$3.7
<b>Total Direct Effects</b>	<b>\$85.9</b>	<b>939.8</b>	<b>\$29.0</b>	<b>\$47.6</b>
<b>Secondary Effects</b>	<b>\$139.0</b>	<b>992.6</b>	<b>\$44.3</b>	<b>\$75.6</b>
<b>Total Effects</b>	<b>\$225.0</b>	<b>1,932.4</b>	<b>\$73.3</b>	<b>\$123.1</b>