

The Indiana 1st Congressional District

Table 1. The Indiana 1st Congressional District Description

Area (square miles)	2,209
Navigable Waterbody (square miles)	23
Total Population (2007)	704,604
Population Density (per square mile) (2007)	317
Persons 18+ (2007)	527,136
Number of Households (2007)	262,914

Table 2. Registered Boats Owned by Residents Residing in the Indiana 1st Congressional District

	1st CD	State Total
Number of Registered Boats	20,989	239,227
Type of Registered Boats		
Power Boats	18,585	211,734
Outboards	14,088	161,503
Inboards	857	9,825
Stern Drives	3,473	38,624
Jet Boats	167	1,782
Personal Watercraft	2,103	23,788
Sailboats	301	3,705
Size of Registered Boats		
≤ 15'	9,417	109,423
16'-24'	10,587	121,180
25'-39'	894	7,437
40' +	91	1,187
Per Capita Ownership of Registered Boats		
All Population	30/1000	38/1000
Persons 18 +	40/1000	51/1000
Households	80/1000	95/1000

Table 3. Boating-related Businesses Based on NAICS Codes

Category	1st CD	State Total
Boat Building		
No. of Businesses	-	18
No. of Employees	-	1,638
Total Sales (\$ Millions)	-	\$263.2
Motors & Engines Mfg.		
No. of Businesses	-	-
No. of Employees	-	-
Total Sales (\$ Millions)	-	-
Accessories & Supplies Mfg.		
No. of Businesses	-	8
No. of Employees	-	230
Total Sales (\$ Millions)	-	\$22.4
Dealers & Wholesalers		
No. of Businesses	8	138
No. of Employees	33	785
Total Sales (\$ Millions)	\$6.7	\$144.8
Boating Services		
No. of Businesses	10	95
No. of Employees	76	433
Total Sales (\$ Millions)	\$7.3	\$28.1

Figure 1. Location of the Indiana 1st Congressional District



Figure 2. Navigable Waters of the Indiana 1st Congressional District

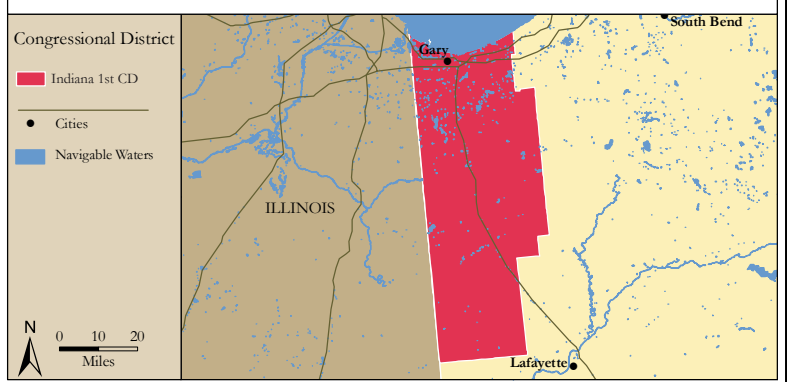


Figure 3. Number of Registered Boats by Zipcode within the Indiana 1st Congressional District

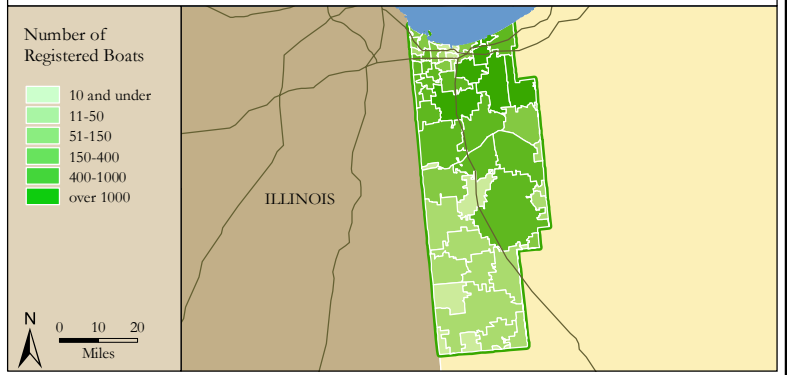
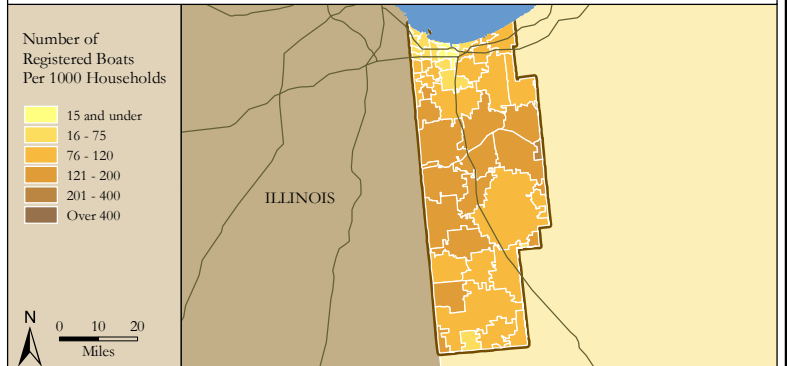


Figure 4. Per Capita (Household) Ownership of Registered Boats by Zipcode within the Indiana 1st Congressional District



Economic Significance of Boating

Table 1. Craft and Trip Expenses by Power and Sailboats Registered in the Indiana 1st Congressional District

Category	Boat Type and Size								Total
	Power <15'	Power 16' - 24'	Power 25' - 39'	Power 40'+	Sail <15'	Sail 16' - 24'	Sail 25' - 39'	Sail 40+	
Number of boats (Thousands of boats)	7.2	10.5	0.8	0.1	0.1	0.1	0.1	0.0	18.9
Annual craft spending (\$ per boat per year)	\$457.9	\$1,655.6	\$7,464.6	\$25,299.0	\$488.7	\$1,830.2	\$7,439.8	\$18,328.8	
Total craft spending (\$ Millions)	\$3.3	\$17.4	\$5.7	\$2.0	\$0.0	\$0.2	\$1.0	\$0.2	\$29.8
Total boat days (Thousands of days)	118.0	262.9	23.3	3.5	1.3	1.7	4.3	0.5	415.4
Total trip spending (\$ per boat per year)	\$935.9	\$2,148.4	\$4,574.4	\$8,039.6	\$1,009.7	\$1,009.7	\$1,963.9	\$5,204.7	
Total trip spending (\$ Millions)	\$6.8	\$22.6	\$3.5	\$0.6	\$0.1	\$0.1	\$0.3	\$0.1	\$33.9
Total craft & trip spending (\$ Millions)	\$10.1	\$39.9	\$9.1	\$2.7	\$0.1	\$0.3	\$1.3	\$0.3	\$63.7

Table 2. Total Spending on Boat Trips by Power and Sailboat Owners Registered in the Indiana 1st CD

Category	Total (\$ Millions)	Percentage
Lodging	\$1.4	4%
Marina services	\$2.7	8%
Restaurant	\$6.2	18%
Groceries	\$6.2	18%
Boat fuel	\$7.9	23%
Auto fuel	\$6.3	18%
Repair & Maintenance	-	-
Marine supplies	-	-
Recreation & Entertainment	\$1.4	4%
Shopping	\$1.0	3%
Other services	-	-
Other goods	\$0.8	2%
Total	\$33.9	100%

Table 3. Total Annual Craft Spending (not including purchases of boats) by Power and Sailboat Owners Registered in the Indiana 1st CD

Category	Total (\$ Millions)	Percentage
Slip	\$4.2	14%
Loan Payments	\$9.5	32%
Replacement Motors	\$0.4	1%
Replacement Trailers	\$0.1	0%
Insurance	\$2.7	9%
Repairs	\$5.9	20%
Accessories	\$5.7	19%
Taxes	\$1.2	4%
Total	\$29.8	100%

Table 4. Economic Significance of Trip Spending and Annual Craft Spending by Power and Sailboats Registered in the Indiana 1st CD

	Trip Spending	Annual Craft Spending	Total
Direct Effects			
Sales (\$ Millions)	\$28.7	\$18.7	\$47.4
Jobs	298.3	215.2	513.6
Labor Income (\$ Millions)	\$8.6	\$7.2	\$15.8
Value Added (\$ Millions)	\$13.8	\$12.1	\$25.9
Total Effects			
Sales (\$ Millions)	\$77.1	\$47.4	\$124.5
Jobs	635.0	427.0	1,062.0
Labor Income (\$ Millions)	\$23.6	\$16.7	\$40.3
Value Added (\$ Millions)	\$39.8	\$27.9	\$67.7

Table 5. Economic Significance of Power and Sailboats Registered in the Indiana 1st CD

Sector/Spending category	Sales (\$ Millions)	Jobs	Labor Income (\$Millions)	Value Added (\$Millions)
Direct Effects				
Lodging	\$1.4	16.9	\$0.5	\$1.0
Marina Services	\$6.9	88.8	\$2.4	\$4.4
Restaurant	\$6.2	122.1	\$2.1	\$3.0
Recreation & Entertainment	\$1.4	18.2	\$0.5	\$0.9
Repair & Maintenance	\$5.9	74.2	\$2.2	\$3.1
Insurance & Credit	\$3.3	24.2	\$1.4	\$3.1
Gas Service	\$3.2	37.6	\$1.5	\$2.4
Other Retail Trade	\$4.6	86.6	\$2.2	\$3.6
Wholesale Trade	\$3.1	19.6	\$1.3	\$2.3
Other Local Production of Goods	\$11.4	25.5	\$1.6	\$2.2
Total Direct Effects	\$47.4	513.6	\$15.8	\$25.9
Secondary Effects	\$77.1	548.4	\$24.5	\$41.8
Total Effects	\$124.5	1,062.0	\$40.3	\$67.7

The Indiana 2nd Congressional District

Table 1. The Indiana 2nd Congressional District Description

Area (square miles)	3,679
Navigable Waterbody (square miles)	35
Total Population (2007)	687,789
Population Density (per square mile) (2007)	186
Persons 18+ (2007)	513,148
Number of Households (2007)	264,378

Table 2. Registered Boats Owned by Residents Residing in the Indiana 2nd Congressional District

	2nd CD	State Total
Number of Registered Boats	28,497	239,227
Type of Registered Boats		
Power Boats	25,143	211,734
Outboards	20,308	161,503
Inboards	1,101	9,825
Stern Drives	3,489	38,624
Jet Boats	245	1,782
Personal Watercraft	2,855	23,788
Sailboats	499	3,705
Size of Registered Boats		
≤ 15'	14,219	109,423
16'-24'	13,212	121,180
25'-39'	967	7,437
40' +	99	1,187
Per Capita Ownership of Registered Boats		
All Population	41/1000	38/1000
Persons 18 +	56/1000	51/1000
Households	108/1000	95/1000

Table 3. Boating-related Businesses Based on NAICS Codes

Category	2nd CD	State Total
Boat Building		
No. of Businesses	3	18
No. of Employees	156	1,638
Total Sales (\$ Millions)	\$66.3	\$263.2
Motors & Engines Mfg.		
No. of Businesses	-	-
No. of Employees	-	-
Total Sales (\$ Millions)	-	-
Accessories & Supplies Mfg.		
No. of Businesses	2	8
No. of Employees	60	230
Total Sales (\$ Millions)	\$8.2	\$22.4
Dealers & Wholesalers		
No. of Businesses	17	138
No. of Employees	84	785
Total Sales (\$ Millions)	\$12.7	\$144.8
Boating Services		
No. of Businesses	11	95
No. of Employees	30	433
Total Sales (\$ Millions)	\$2.5	\$28.1

Figure 1. Location of the Indiana 2nd Congressional District

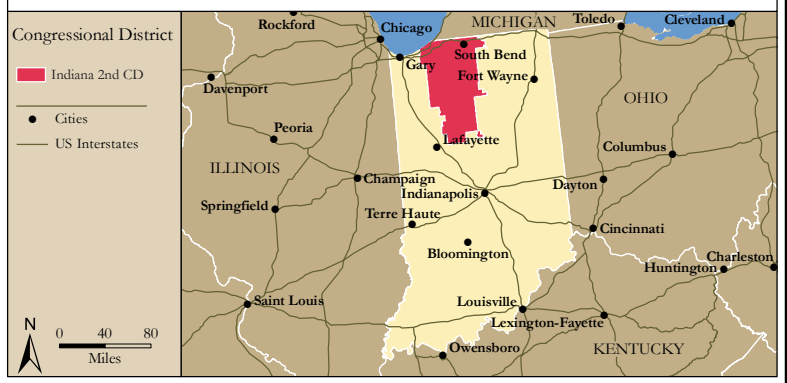


Figure 2. Navigable Waters of the Indiana 2nd Congressional District

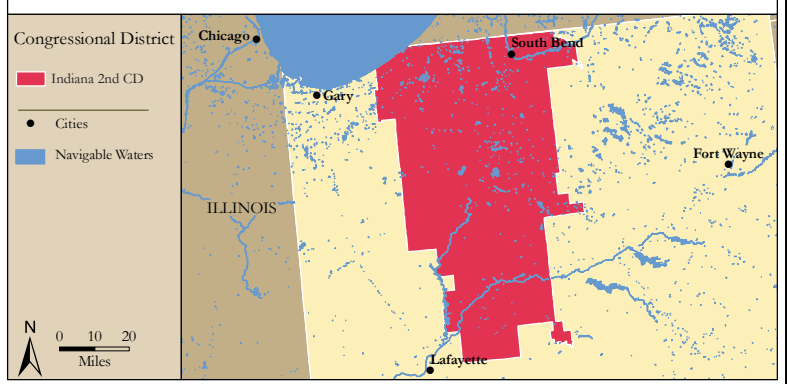


Figure 3. Number of Registered Boats by Zipcode within the Indiana 2nd Congressional District

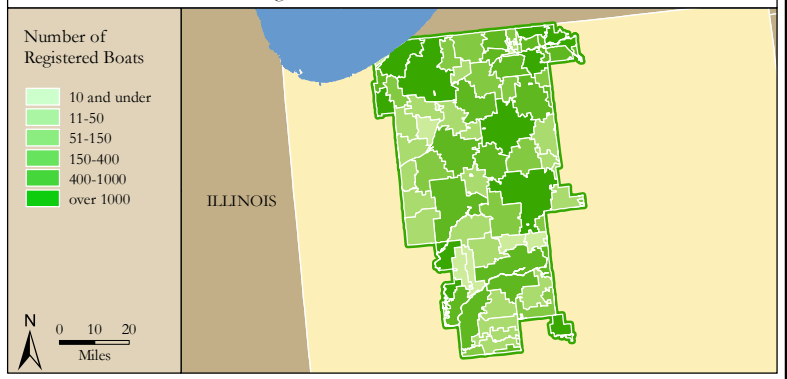
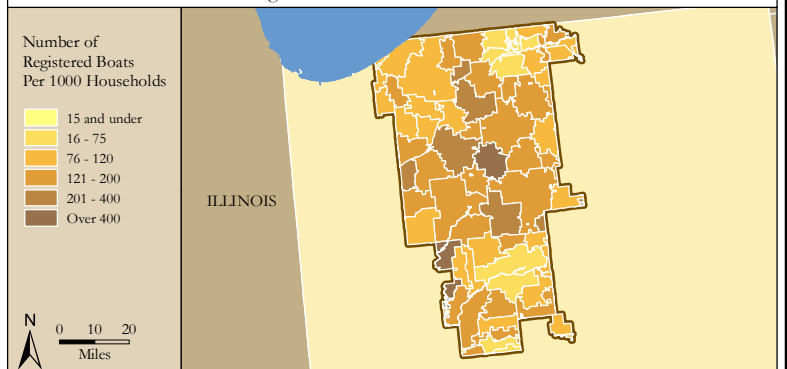


Figure 4. Per Capita (Household) Ownership of Registered Boats by Zipcode within the Indiana 2nd Congressional District



Economic Significance of Boating

Table 1. Craft and Trip Expenses by Power and Sailboats Registered in the Indiana 2nd Congressional District

Category	Boat Type and Size								Total
	Power <15'	Power 16' - 24'	Power 25' - 39'	Power 40'+	Sail <15'	Sail 16' - 24'	Sail 25' - 39'	Sail 40+	
Number of boats (Thousands of boats)	11.2	13.0	0.8	0.1	0.2	0.2	0.1	0.0	25.6
Annual craft spending (\$ per boat per year)	\$457.9	\$1,655.6	\$7,464.6	\$25,299.0	\$488.7	\$1,830.2	\$7,439.8	\$18,328.8	
Total craft spending (\$ Millions)	\$5.1	\$21.6	\$6.3	\$2.1	\$0.1	\$0.3	\$0.9	\$0.3	\$36.7
Total boat days (Thousands of days)	182.2	326.2	25.9	3.6	3.4	3.5	3.9	0.8	549.4
Total trip spending (\$ per boat per year)	\$935.9	\$2,148.4	\$4,574.4	\$8,039.6	\$1,009.7	\$1,009.7	\$1,963.9	\$5,204.7	
Total trip spending (\$ Millions)	\$10.5	\$28.0	\$3.9	\$0.7	\$0.2	\$0.2	\$0.2	\$0.1	\$43.7
Total craft & trip spending (\$ Millions)	\$15.6	\$49.6	\$10.1	\$2.7	\$0.3	\$0.5	\$1.2	\$0.4	\$80.4

Table 2. Total Spending on Boat Trips by Power and Sailboat Owners Registered in the Indiana 2nd CD

Category	Total (\$ Millions)	Percentage
Lodging	\$1.8	4%
Marina services	\$3.5	8%
Restaurant	\$7.9	18%
Groceries	\$7.9	18%
Boat fuel	\$10.0	23%
Auto fuel	\$8.2	19%
Repair & Maintenance	-	-
Marine supplies	-	-
Recreation & Entertainment	\$1.9	4%
Shopping	\$1.4	3%
Other services	-	-
Other goods	\$1.1	3%
Total	\$43.7	100%

Table 3. Total Annual Craft Spending (not including purchases of boats) by Power and Sailboat Owners Registered in the Indiana 2nd CD

Category	Total (\$ Millions)	Percentage
Slip	\$5.0	14%
Loan Payments	\$11.5	31%
Replacement Motors	\$0.5	1%
Replacement Trailers	\$0.1	0%
Insurance	\$3.4	9%
Repairs	\$7.4	20%
Accessories	\$7.2	20%
Taxes	\$1.5	4%
Total	\$36.7	100%

Table 4. Economic Significance of Trip Spending and Annual Craft Spending by Power and Sailboats Registered in the Indiana 2nd CD

	Trip Spending	Annual Craft Spending	Total
Direct Effects			
Sales (\$ Millions)	\$36.8	\$23.2	\$60.0
Jobs	384.4	266.6	651.0
Labor Income (\$ Millions)	\$11.1	\$9.0	\$20.0
Value Added (\$ Millions)	\$17.7	\$15.0	\$32.7
Total Effects			
Sales (\$ Millions)	\$99.0	\$58.8	\$157.8
Jobs	817.2	529.0	1,346.2
Labor Income (\$ Millions)	\$30.3	\$20.8	\$51.0
Value Added (\$ Millions)	\$51.1	\$34.6	\$85.8

Table 5. Economic Significance of Power and Sailboats Registered in the Indiana 2nd CD

Sector/Spending category	Sales (\$ Millions)	Jobs	Labor Income (\$Millions)	Value Added (\$Millions)
Direct Effects				
Lodging	\$1.8	21.8	\$0.7	\$1.2
Marina Services	\$8.6	109.9	\$3.0	\$5.4
Restaurant	\$7.9	156.9	\$2.7	\$3.8
Recreation & Entertainment	\$1.9	24.0	\$0.7	\$1.2
Repair & Maintenance	\$7.4	91.8	\$2.7	\$3.8
Insurance & Credit	\$4.1	30.1	\$1.8	\$3.8
Gas Service	\$4.1	48.2	\$1.9	\$3.1
Other Retail Trade	\$5.9	110.5	\$2.9	\$4.6
Wholesale Trade	\$3.9	25.0	\$1.7	\$3.0
Other Local Production of Goods	\$14.6	32.7	\$2.0	\$2.8
Total Direct Effects	\$60.0	651.0	\$20.0	\$32.7
Secondary Effects	\$97.7	695.2	\$31.0	\$53.0
Total Effects	\$157.8	1,346.2	\$51.0	\$85.8

The Indiana 3rd Congressional District

Table 1. The Indiana 3rd Congressional District Description

Area (square miles)	3,240
Navigable Waterbody (square miles)	68
Total Population (2007)	712,117
Population Density (per square mile) (2007)	216
Persons 18+ (2007)	519,207
Number of Households (2007)	272,483

Table 2. Registered Boats Owned by Residents Residing in the Indiana 3rd Congressional District

	3rd CD	State Total
Number of Registered Boats	47,112	239,227
Type of Registered Boats		
Power Boats	40,783	211,734
Outboards	31,736	161,503
Inboards	2,499	9,825
Stern Drives	6,133	38,624
Jet Boats	415	1,782
Personal Watercraft	5,567	23,788
Sailboats	762	3,705

Size of Registered Boats		
≤ 15'	22,495	109,423
16'-24'	23,564	121,180
25'-39'	989	7,437
40' +	64	1,187

Per Capita Ownership of Registered Boats		
All Population	66/1000	38/1000
Persons 18 +	91/1000	51/1000
Households	173/1000	95/1000

Table 3. Boating-related Businesses Based on NAICS Codes

Category	3rd CD	State Total
Boat Building		
No. of Businesses	10	18
No. of Employees	1,417	1,638
Total Sales (\$ Millions)	\$192.6	\$263.2
Motors & Engines Mfg.		
No. of Businesses	-	-
No. of Employees	-	-
Total Sales (\$ Millions)	-	-
Accessories & Supplies Mfg.		
No. of Businesses	4	8
No. of Employees	142	230
Total Sales (\$ Millions)	\$11.5	\$22.4
Dealers & Wholesalers		
No. of Businesses	30	138
No. of Employees	199	785
Total Sales (\$ Millions)	\$34.4	\$144.8
Boating Services		
No. of Businesses	16	95
No. of Employees	26	433
Total Sales (\$ Millions)	\$1.2	\$28.1

Figure 1. Location of the Indiana 3rd Congressional District



Figure 2. Navigable Waters of the Indiana 3rd Congressional District

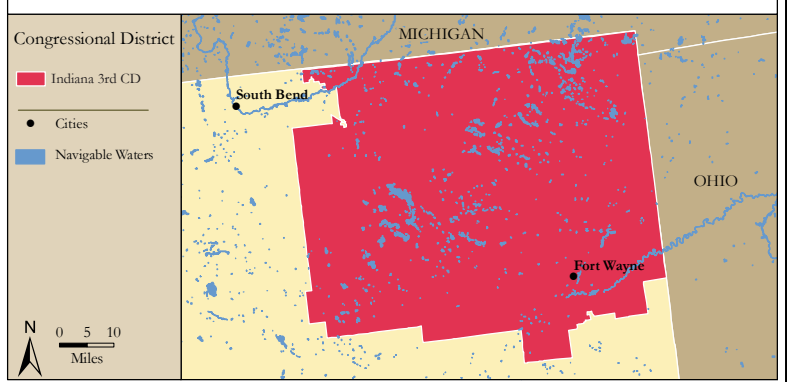


Figure 3. Number of Registered Boats by Zipcode within the Indiana 3rd Congressional District

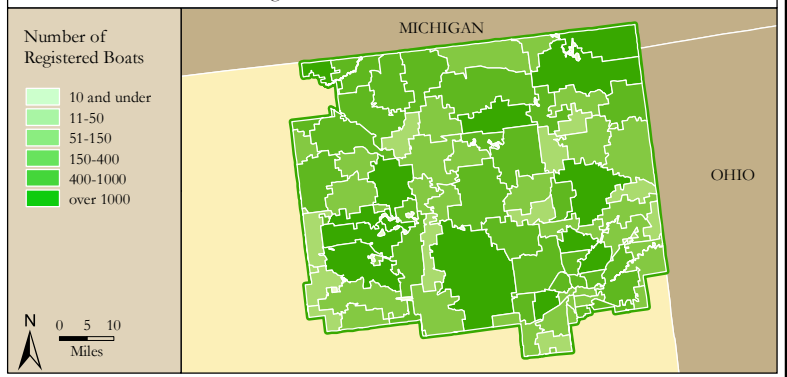
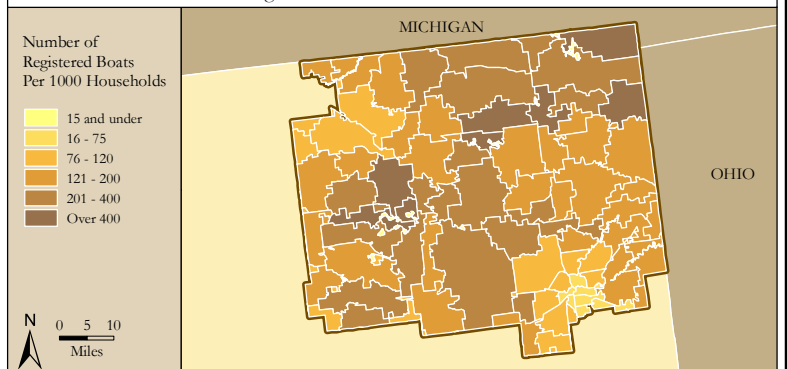


Figure 4. Per Capita (Household) Ownership of Registered Boats by Zipcode within the Indiana 3rd Congressional District



Economic Significance of Boating

Table 1. Craft and Trip Expenses by Power and Sailboats Registered in the Indiana 3rd Congressional District

Category	Boat Type and Size								Total
	Power <15'	Power 16' - 24'	Power 25' - 39'	Power 40'+	Sail <15'	Sail 16' - 24'	Sail 25' - 39'	Sail 40+	
Number of boats (Thousands of boats)	16.7	23.2	0.9	0.1	0.3	0.4	0.1	0.0	41.5
Annual craft spending (\$ per boat per year)	\$457.9	\$1,655.6	\$7,464.6	\$25,299.0	\$488.7	\$1,830.2	\$7,439.8	\$18,328.8	
Total craft spending (\$ Millions)	\$7.6	\$38.4	\$6.5	\$1.5	\$0.1	\$0.7	\$0.9	\$0.1	\$55.8
Total boat days (Thousands of days)	271.2	580.7	26.8	2.6	5.2	7.2	3.6	0.2	897.5
Total trip spending (\$ per boat per year)	\$935.9	\$2,148.4	\$4,574.4	\$8,039.6	\$1,009.7	\$1,009.7	\$1,963.9	\$5,204.7	
Total trip spending (\$ Millions)	\$15.6	\$49.8	\$4.0	\$0.5	\$0.3	\$0.4	\$0.2	\$0.0	\$70.8
Total craft & trip spending (\$ Millions)	\$23.2	\$88.2	\$10.5	\$2.0	\$0.4	\$1.1	\$1.1	\$0.1	\$126.6

Table 2. Total Spending on Boat Trips by Power and Sailboat Owners Registered in the Indiana 3rd CD

Category	Total (\$ Millions)	Percentage
Lodging	\$3.0	4%
Marina services	\$5.5	8%
Restaurant	\$12.7	18%
Groceries	\$13.0	18%
Boat fuel	\$15.9	22%
Auto fuel	\$13.7	19%
Repair & Maintenance	-	-
Marine supplies	-	-
Recreation & Entertainment	\$3.0	4%
Shopping	\$2.2	3%
Other services	-	-
Other goods	\$1.8	3%
Total	\$70.8	100%

Table 3. Total Annual Craft Spending (not including purchases of boats) by Power and Sailboat Owners Registered in the Indiana 3rd CD

Category	Total (\$ Millions)	Percentage
Slip	\$7.3	13%
Loan Payments	\$17.5	31%
Replacement Motors	\$0.8	2%
Replacement Trailers	\$0.2	0%
Insurance	\$5.2	9%
Repairs	\$11.2	20%
Accessories	\$11.2	20%
Taxes	\$2.4	4%
Total	\$55.8	100%

Table 4. Economic Significance of Trip Spending and Annual Craft Spending by Power and Sailboats Registered in the Indiana 3rd CD

	Trip Spending	Annual Craft Spending	Total
Direct Effects			
Sales (\$ Millions)	\$59.5	\$35.2	\$94.7
Jobs	620.5	404.1	1,024.6
Labor Income (\$ Millions)	\$17.9	\$13.6	\$31.5
Value Added (\$ Millions)	\$28.7	\$22.8	\$51.5
Total Effects			
Sales (\$ Millions)	\$159.8	\$89.3	\$249.1
Jobs	1,319.7	802.5	2,122.2
Labor Income (\$ Millions)	\$48.9	\$31.5	\$80.5
Value Added (\$ Millions)	\$82.6	\$52.6	\$135.2

Table 5. Economic Significance of Power and Sailboats Registered in the Indiana 3rd CD

Sector/Spending category	Sales (\$ Millions)	Jobs	Labor Income (\$Millions)	Value Added (\$Millions)
Direct Effects				
Lodging	\$3.0	37.1	\$1.2	\$2.1
Marina Services	\$12.8	164.4	\$4.5	\$8.1
Restaurant	\$12.7	252.2	\$4.3	\$6.1
Recreation & Entertainment	\$3.0	38.8	\$1.1	\$1.9
Repair & Maintenance	\$11.2	139.6	\$4.1	\$5.8
Insurance & Credit	\$6.4	46.2	\$2.7	\$5.8
Gas Service	\$6.6	78.4	\$3.2	\$5.0
Other Retail Trade	\$9.4	175.4	\$4.6	\$7.4
Wholesale Trade	\$6.3	40.1	\$2.7	\$4.8
Other Local Production of Goods	\$23.4	52.4	\$3.2	\$4.5
Total Direct Effects	\$94.7	1,024.6	\$31.5	\$51.5
Secondary Effects	\$154.4	1,097.6	\$48.9	\$83.7
Total Effects	\$249.1	2,122.2	\$80.5	\$135.2

The Indiana 4th Congressional District

Table 1. The Indiana 4th Congressional District Description

Area (square miles)	4,016
Navigable Waterbody (square miles)	17
Total Population (2007)	748,529
Population Density (per square mile) (2007)	186
Persons 18+ (2007)	565,401
Number of Households (2007)	289,570

Table 2. Registered Boats Owned by Residents Residing in the Indiana 4th Congressional District

	4th CD	State Total
Number of Registered Boats	24,350	239,227
Type of Registered Boats		
Power Boats	21,570	211,734
Outboards	15,868	161,503
Inboards	873	9,825
Stern Drives	4,635	38,624
Jet Boats	194	1,782
Personal Watercraft	2,372	23,788
Sailboats	408	3,705

Size of Registered Boats		
≤ 15'	10,246	109,423
16'-24'	13,165	121,180
25'-39'	788	7,437
40' +	151	1,187

Per Capita Ownership of Registered Boats		
All Population	33/1000	38/1000
Persons 18 +	43/1000	51/1000
Households	84/1000	95/1000

Table 3. Boating-related Businesses Based on NAICS Codes

Category	4th CD	State Total
Boat Building		
No. of Businesses	-	18
No. of Employees	-	1,638
Total Sales (\$ Millions)	-	\$263.2
Motors & Engines Mfg.		
No. of Businesses	-	-
No. of Employees	-	-
Total Sales (\$ Millions)	-	-
Accessories & Supplies Mfg.		
No. of Businesses	1	8
No. of Employees	4	230
Total Sales (\$ Millions)	\$0.4	\$22.4
Dealers & Wholesalers		
No. of Businesses	13	138
No. of Employees	70	785
Total Sales (\$ Millions)	\$16.8	\$144.8
Boating Services		
No. of Businesses	3	95
No. of Employees	37	433
Total Sales (\$ Millions)	\$2.2	\$28.1

Figure 1. Location of the Indiana 4th Congressional District

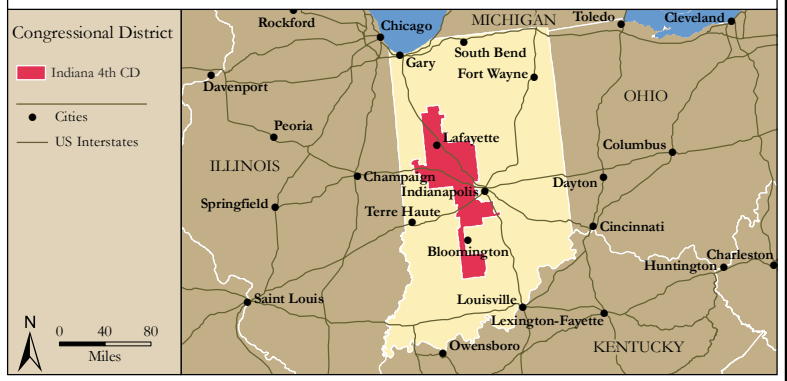


Figure 2. Navigable Waters of the Indiana 4th Congressional District

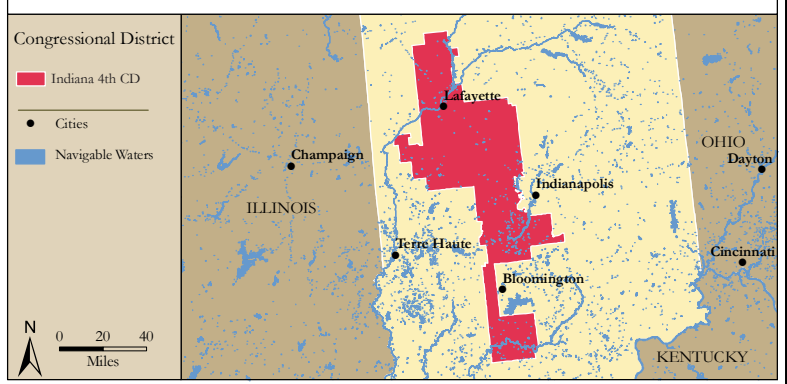


Figure 3. Number of Registered Boats by Zipcode within the Indiana 4th Congressional District

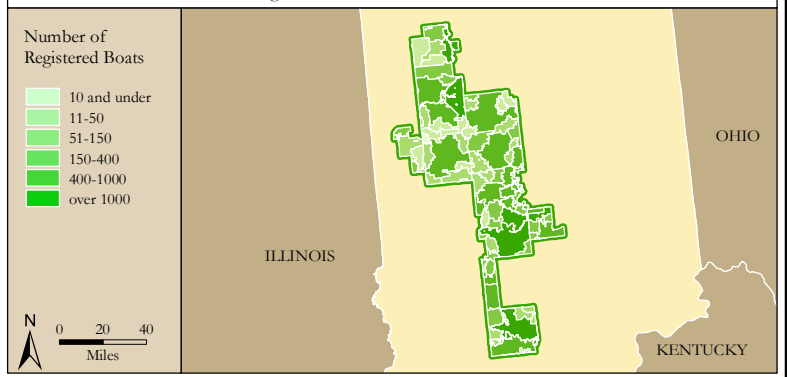
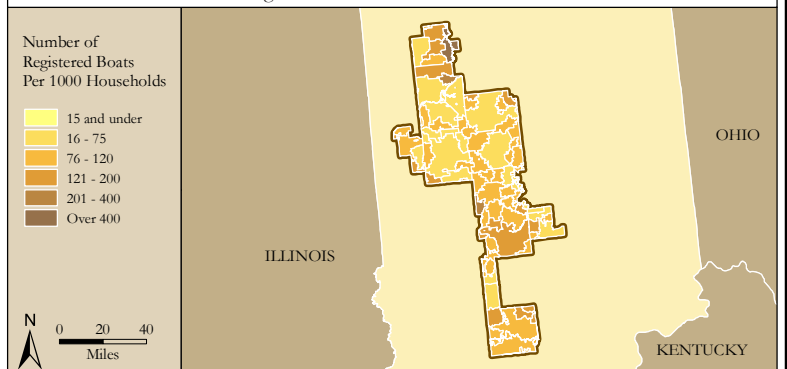


Figure 4. Per Capita (Household) Ownership of Registered Boats by Zipcode within the Indiana 4th Congressional District



Economic Significance of Boating

Table 1. Craft and Trip Expenses by Power and Sailboats Registered in the Indiana 4th Congressional District

Category	Boat Type and Size								Total
	Power <15'	Power 16' - 24'	Power 25' - 39'	Power 40'+	Sail <15'	Sail 16' - 24'	Sail 25' - 39'	Sail 40+	
Number of boats (Thousands of boats)	7.8	13.0	0.7	0.1	0.1	0.2	0.1	0.0	22.0
Annual craft spending (\$ per boat per year)	\$457.9	\$1,655.6	\$7,464.6	\$25,299.0	\$488.7	\$1,830.2	\$7,439.8	\$18,328.8	
Total craft spending (\$ Millions)	\$3.6	\$21.5	\$5.2	\$3.7	\$0.1	\$0.4	\$0.7	\$0.1	\$35.1
Total boat days (Thousands of days)	126.5	324.4	21.4	6.3	2.0	4.0	2.8	0.3	487.8
Total trip spending (\$ per boat per year)	\$935.9	\$2,148.4	\$4,574.4	\$8,039.6	\$1,009.7	\$1,009.7	\$1,963.9	\$5,204.7	
Total trip spending (\$ Millions)	\$7.3	\$27.8	\$3.2	\$1.2	\$0.1	\$0.2	\$0.2	\$0.0	\$40.0
Total craft & trip spending (\$ Millions)	\$10.8	\$49.3	\$8.4	\$4.8	\$0.2	\$0.6	\$0.8	\$0.1	\$75.1

Table 2. Total Spending on Boat Trips by Power and Sailboat Owners Registered in the Indiana 4th CD

Category	Total (\$ Millions)	Percentage
Lodging	\$1.6	4%
Marina services	\$3.2	8%
Restaurant	\$7.2	18%
Groceries	\$7.3	18%
Boat fuel	\$9.3	23%
Auto fuel	\$7.4	19%
Repair & Maintenance	-	-
Marine supplies	-	-
Recreation & Entertainment	\$1.7	4%
Shopping	\$1.2	3%
Other services	-	-
Other goods	\$1.0	2%
Total	\$40.0	100%

Table 3. Total Annual Craft Spending (not including purchases of boats) by Power and Sailboat Owners Registered in the Indiana 4th CD

Category	Total (\$ Millions)	Percentage
Slip	\$4.8	14%
Loan Payments	\$11.3	32%
Replacement Motors	\$0.5	1%
Replacement Trailers	\$0.1	0%
Insurance	\$3.2	9%
Repairs	\$7.0	20%
Accessories	\$6.7	19%
Taxes	\$1.5	4%
Total	\$35.1	100%

Table 4. Economic Significance of Trip Spending and Annual Craft Spending by Power and Sailboats Registered in the Indiana 4th CD

	Trip Spending	Annual Craft Spending	Total
Direct Effects			
Sales (\$ Millions)	\$33.8	\$21.9	\$55.7
Jobs	351.2	252.0	603.2
Labor Income (\$ Millions)	\$10.1	\$8.5	\$18.6
Value Added (\$ Millions)	\$16.2	\$14.2	\$30.4
Total Effects			
Sales (\$ Millions)	\$90.7	\$55.6	\$146.3
Jobs	747.7	500.0	1,247.7
Labor Income (\$ Millions)	\$27.7	\$19.6	\$47.4
Value Added (\$ Millions)	\$46.9	\$32.7	\$79.6

Table 5. Economic Significance of Power and Sailboats Registered in the Indiana 4th CD

Sector/Spending category	Sales (\$ Millions)	Jobs	Labor Income (\$Millions)	Value Added (\$Millions)
Direct Effects				
Lodging	\$1.6	20.3	\$0.7	\$1.2
Marina Services	\$8.0	102.9	\$2.8	\$5.0
Restaurant	\$7.2	143.5	\$2.5	\$3.5
Recreation & Entertainment	\$1.7	21.4	\$0.6	\$1.0
Repair & Maintenance	\$7.0	86.9	\$2.6	\$3.6
Insurance & Credit	\$4.0	28.7	\$1.7	\$3.6
Gas Service	\$3.7	44.3	\$1.8	\$2.8
Other Retail Trade	\$5.4	102.0	\$2.6	\$4.3
Wholesale Trade	\$3.6	23.1	\$1.5	\$2.7
Other Local Production of Goods	\$13.5	30.1	\$1.8	\$2.6
Total Direct Effects	\$55.7	603.2	\$18.6	\$30.4
Secondary Effects	\$90.6	644.5	\$28.7	\$49.2
Total Effects	\$146.3	1,247.7	\$47.4	\$79.6

The Indiana 5th Congressional District

Table 1. The Indiana 5th Congressional District Description

Area (square miles)	3,266
Navigable Waterbody (square miles)	56
Total Population (2007)	775,886
Population Density (per square mile) (2007)	236
Persons 18+ (2007)	575,048
Number of Households (2007)	300,262

Table 2. Registered Boats Owned by Residents Residing in the Indiana 5th Congressional District

	5th CD	State Total
Number of Registered Boats	24,722	239,227
Type of Registered Boats		
Power Boats	21,125	211,734
Outboards	14,312	161,503
Inboards	1,270	9,825
Stern Drives	5,337	38,624
Jet Boats	206	1,782
Personal Watercraft	3,194	23,788
Sailboats	403	3,705
Size of Registered Boats		
≤ 15'	10,497	109,423
16'-24'	13,299	121,180
25'-39'	779	7,437
40' +	147	1,187
Per Capita Ownership of Registered Boats		
All Population	32/1000	38/1000
Persons 18 +	43/1000	51/1000
Households	82/1000	95/1000

Table 3. Boating-related Businesses Based on NAICS Codes

Category	5th CD	State Total
Boat Building		
No. of Businesses	1	18
No. of Employees	9	1,638
Total Sales (\$ Millions)	\$0.5	\$263.2
Motors & Engines Mfg.		
No. of Businesses	-	-
No. of Employees	-	-
Total Sales (\$ Millions)	-	-
Accessories & Supplies Mfg.		
No. of Businesses	-	8
No. of Employees	-	230
Total Sales (\$ Millions)	-	\$22.4
Dealers & Wholesalers		
No. of Businesses	12	138
No. of Employees	48	785
Total Sales (\$ Millions)	\$10.1	\$144.8
Boating Services		
No. of Businesses	13	95
No. of Employees	66	433
Total Sales (\$ Millions)	\$3.7	\$28.1

Figure 1. Location of the Indiana 5th Congressional District

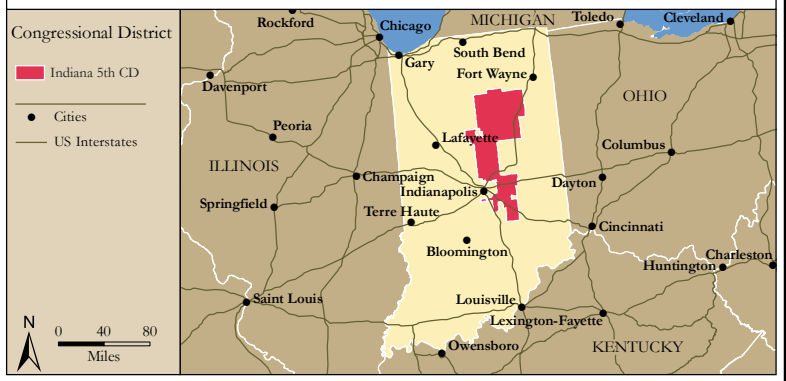


Figure 2. Navigable Waters of the Indiana 5th Congressional District

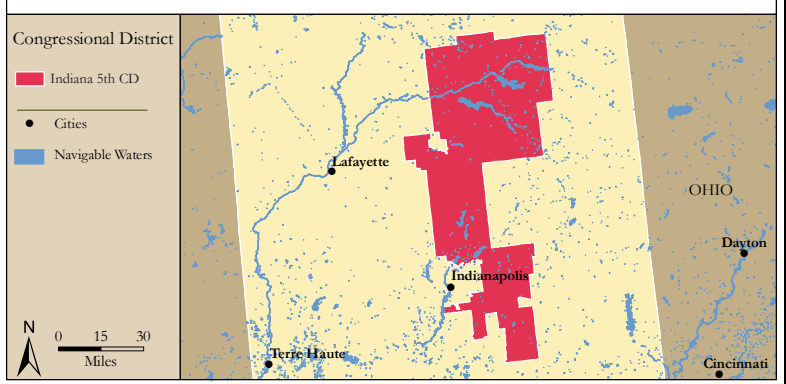


Figure 3. Number of Registered Boats by Zipcode within the Indiana 5th Congressional District

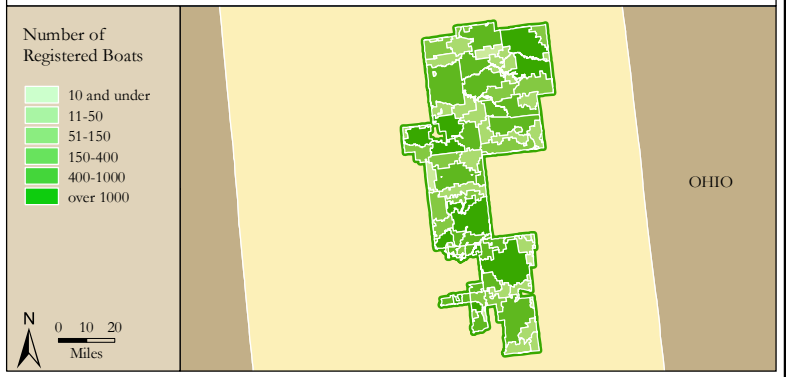
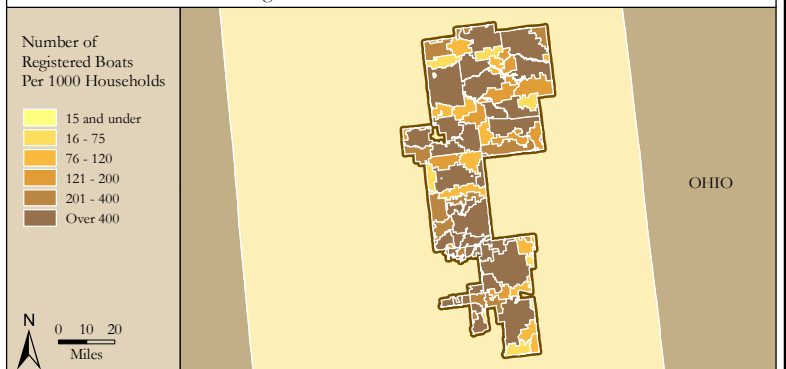


Figure 4. Per Capita (Household) Ownership of Registered Boats by Zipcode within the Indiana 5th Congressional District



Economic Significance of Boating

Table 1. Craft and Trip Expenses by Power and Sailboats Registered in the Indiana 5th Congressional District

Category	Boat Type and Size								Total
	Power <15'	Power 16' - 24'	Power 25' - 39'	Power 40'+	Sail <15'	Sail 16' - 24'	Sail 25' - 39'	Sail 40+	
Number of boats (Thousands of boats)	7.2	13.1	0.7	0.1	0.1	0.2	0.1	0.0	21.5
Annual craft spending (\$ per boat per year)	\$457.9	\$1,655.6	\$7,464.6	\$25,299.0	\$488.7	\$1,830.2	\$7,439.8	\$18,328.8	
Total craft spending (\$ Millions)	\$3.3	\$21.7	\$5.3	\$3.4	\$0.1	\$0.3	\$0.5	\$0.2	\$34.9
Total boat days (Thousands of days)	116.7	328.4	21.7	5.9	2.7	3.5	2.3	0.5	481.6
Total trip spending (\$ per boat per year)	\$935.9	\$2,148.4	\$4,574.4	\$8,039.6	\$1,009.7	\$1,009.7	\$1,963.9	\$5,204.7	
Total trip spending (\$ Millions)	\$6.7	\$28.2	\$3.2	\$1.1	\$0.1	\$0.2	\$0.1	\$0.1	\$39.7
Total craft & trip spending (\$ Millions)	\$10.0	\$49.9	\$8.5	\$4.5	\$0.2	\$0.5	\$0.7	\$0.3	\$74.6

Table 2. Total Spending on Boat Trips by Power and Sailboat Owners Registered in the Indiana 5th CD

Category	Total (\$ Millions)	Percentage
Lodging	\$1.6	4%
Marina services	\$3.2	8%
Restaurant	\$7.2	18%
Groceries	\$7.3	18%
Boat fuel	\$9.3	23%
Auto fuel	\$7.4	19%
Repair & Maintenance	-	-
Marine supplies	-	-
Recreation & Entertainment	\$1.6	4%
Shopping	\$1.2	3%
Other services	-	-
Other goods	\$1.0	2%
Total	\$39.7	100%

Table 3. Total Annual Craft Spending (not including purchases of boats) by Power and Sailboat Owners Registered in the Indiana 5th CD

Category	Total (\$ Millions)	Percentage
Slip	\$4.8	14%
Loan Payments	\$11.3	32%
Replacement Motors	\$0.5	1%
Replacement Trailers	\$0.1	0%
Insurance	\$3.2	9%
Repairs	\$6.9	20%
Accessories	\$6.7	19%
Taxes	\$1.5	4%
Total	\$34.9	100%

Table 4. Economic Significance of Trip Spending and Annual Craft Spending by Power and Sailboats Registered in the Indiana 5th CD

	Trip Spending	Annual Craft Spending	Total
Direct Effects			
Sales (\$ Millions)	\$33.6	\$21.7	\$55.3
Jobs	348.7	249.7	598.5
Labor Income (\$ Millions)	\$10.1	\$8.4	\$18.5
Value Added (\$ Millions)	\$16.1	\$14.1	\$30.2
Total Effects			
Sales (\$ Millions)	\$90.2	\$55.1	\$145.2
Jobs	742.7	495.5	1,238.1
Labor Income (\$ Millions)	\$27.6	\$19.4	\$47.0
Value Added (\$ Millions)	\$46.5	\$32.4	\$79.0

Table 5. Economic Significance of Power and Sailboats Registered in the Indiana 5th CD

Sector/Spending category	Sales (\$ Millions)	Jobs	Labor Income (\$Millions)	Value Added (\$Millions)
Direct Effects				
Lodging	\$1.6	20.3	\$0.7	\$1.2
Marina Services	\$7.9	101.8	\$2.8	\$5.0
Restaurant	\$7.2	142.6	\$2.4	\$3.5
Recreation & Entertainment	\$1.6	21.1	\$0.6	\$1.0
Repair & Maintenance	\$6.9	86.2	\$2.6	\$3.6
Insurance & Credit	\$3.9	28.5	\$1.7	\$3.6
Gas Service	\$3.7	44.1	\$1.8	\$2.8
Other Retail Trade	\$5.4	101.1	\$2.6	\$4.2
Wholesale Trade	\$3.6	22.9	\$1.5	\$2.7
Other Local Production of Goods	\$13.4	29.9	\$1.8	\$2.6
Total Direct Effects	\$55.3	598.5	\$18.5	\$30.2
Secondary Effects	\$89.9	639.7	\$28.5	\$48.8
Total Effects	\$145.2	1,238.1	\$47.0	\$79.0

The Indiana 6th Congressional District

Table 1. The Indiana 6th Congressional District Description

Area (square miles)	5,550
Navigable Waterbody (square miles)	28
Total Population (2007)	671,221
Population Density (per square mile) (2007)	120
Persons 18+ (2007)	510,122
Number of Households (2007)	264,276

Table 2. Registered Boats Owned by Residents Residing in the Indiana 6th Congressional District

	6th CD	State Total
Number of Registered Boats	24,696	239,227
Type of Registered Boats		
Power Boats	22,309	211,734
Outboards	17,042	161,503
Inboards	905	9,825
Stern Drives	4,237	38,624
Jet Boats	125	1,782
Personal Watercraft	2,060	23,788
Sailboats	327	3,705

Size of Registered Boats	6th CD	State Total
≤ 15'	10,649	109,423
16'-24'	13,264	121,180
25'-39'	643	7,437
40' +	140	1,187

Per Capita Ownership of Registered Boats	6th CD	State Total
All Population	37/1000	38/1000
Persons 18 +	48/1000	51/1000
Households	93/1000	95/1000

Table 3. Boating-related Businesses Based on NAICS Codes

Category	6th CD	State Total
Boat Building		
No. of Businesses	1	18
No. of Employees	25	1,638
Total Sales (\$ Millions)	\$1.8	\$263.2
Motors & Engines Mfg.		
No. of Businesses	-	-
No. of Employees	-	-
Total Sales (\$ Millions)	-	-
Accessories & Supplies Mfg.		
No. of Businesses	-	8
No. of Employees	-	230
Total Sales (\$ Millions)	-	\$22.4
Dealers & Wholesalers		
No. of Businesses	15	138
No. of Employees	70	785
Total Sales (\$ Millions)	\$9.5	\$144.8
Boating Services		
No. of Businesses	7	95
No. of Employees	16	433
Total Sales (\$ Millions)	\$1.1	\$28.1

Figure 1. Location of the Indiana 6th Congressional District

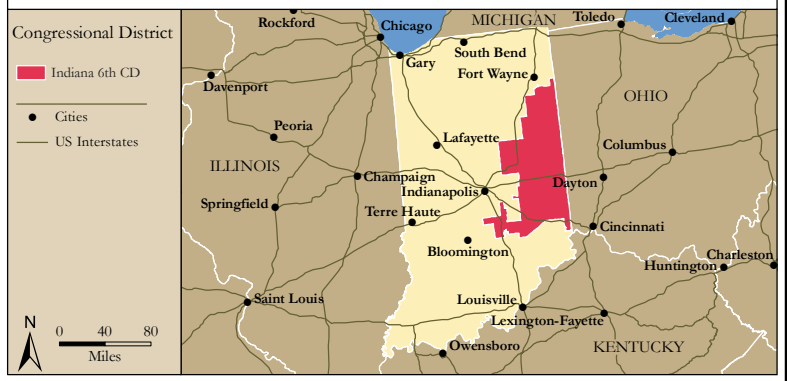


Figure 2. Navigable Waters of the Indiana 6th Congressional District

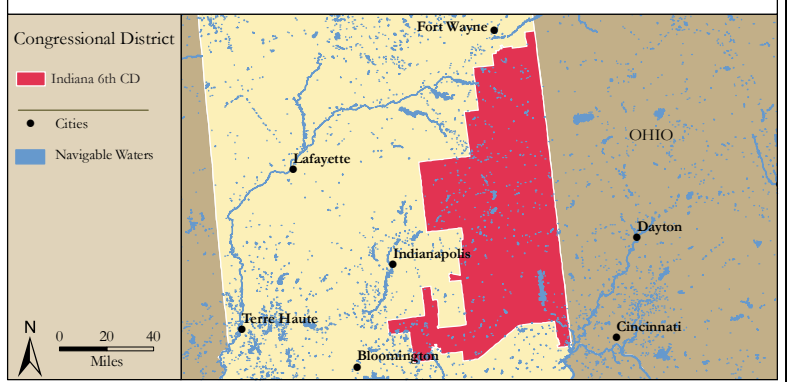


Figure 3. Number of Registered Boats by Zipcode within the Indiana 6th Congressional District

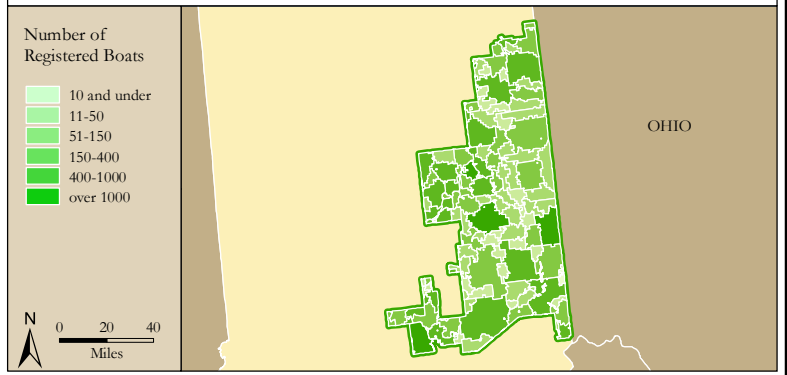
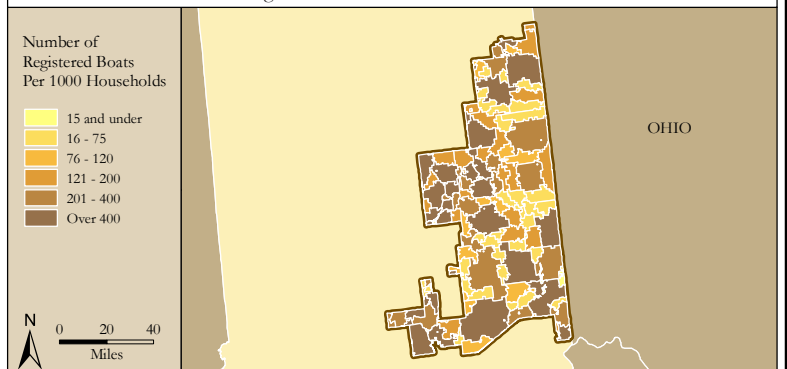


Figure 4. Per Capita (Household) Ownership of Registered Boats by Zipcode within the Indiana 6th Congressional District



Economic Significance of Boating

Table 1. Craft and Trip Expenses by Power and Sailboats Registered in the Indiana 6th Congressional District

Category	Boat Type and Size								Total
	Power <15'	Power 16' - 24'	Power 25' - 39'	Power 40'+	Sail <15'	Sail 16' - 24'	Sail 25' - 39'	Sail 40+	
Number of boats (Thousands of boats)	8.5	13.1	0.6	0.1	0.1	0.2	0.1	0.0	22.6
Annual craft spending (\$ per boat per year)	\$457.9	\$1,655.6	\$7,464.6	\$25,299.0	\$488.7	\$1,830.2	\$7,439.8	\$18,328.8	
Total craft spending (\$ Millions)	\$3.9	\$21.7	\$4.2	\$3.5	\$0.0	\$0.3	\$0.6	\$0.0	\$34.3
Total boat days (Thousands of days)	138.5	327.9	17.5	6.0	1.6	3.3	2.3	0.0	497.1
Total trip spending (\$ per boat per year)	\$935.9	\$2,148.4	\$4,574.4	\$8,039.6	\$1,009.7	\$1,009.7	\$1,963.9	\$5,204.7	
Total trip spending (\$ Millions)	\$8.0	\$28.1	\$2.6	\$1.1	\$0.1	\$0.2	\$0.1	\$0.0	\$40.2
Total craft & trip spending (\$ Millions)	\$11.9	\$49.8	\$6.9	\$4.6	\$0.1	\$0.5	\$0.7	\$0.0	\$74.5

Table 2. Total Spending on Boat Trips by Power and Sailboat Owners Registered in the Indiana 6th CD

Category	Total (\$ Millions)	Percentage
Lodging	\$1.7	4%
Marina services	\$3.2	8%
Restaurant	\$7.3	18%
Groceries	\$7.4	18%
Boat fuel	\$9.2	23%
Auto fuel	\$7.6	19%
Repair & Maintenance	-	-
Marine supplies	-	-
Recreation & Entertainment	\$1.7	4%
Shopping	\$1.2	3%
Other services	-	-
Other goods	\$1.0	3%
Total	\$40.2	100%

Table 3. Total Annual Craft Spending (not including purchases of boats) by Power and Sailboat Owners Registered in the Indiana 6th CD

Category	Total (\$ Millions)	Percentage
Slip	\$4.6	13%
Loan Payments	\$11.0	32%
Replacement Motors	\$0.5	1%
Replacement Trailers	\$0.1	0%
Insurance	\$3.2	9%
Repairs	\$6.8	20%
Accessories	\$6.6	19%
Taxes	\$1.5	4%
Total	\$34.3	100%

Table 4. Economic Significance of Trip Spending and Annual Craft Spending by Power and Sailboats Registered in the Indiana 6th CD

	Trip Spending	Annual Craft Spending	Total
Direct Effects			
Sales (\$ Millions)	\$33.9	\$21.4	\$55.3
Jobs	352.8	246.0	598.8
Labor Income (\$ Millions)	\$10.2	\$8.3	\$18.5
Value Added (\$ Millions)	\$16.3	\$13.9	\$30.2
Total Effects			
Sales (\$ Millions)	\$91.1	\$54.3	\$145.4
Jobs	750.9	488.3	1,239.2
Labor Income (\$ Millions)	\$27.9	\$19.2	\$47.0
Value Added (\$ Millions)	\$47.1	\$32.0	\$79.0

Table 5. Economic Significance of Power and Sailboats Registered in the Indiana 6th CD

Sector/Spending category	Sales (\$ Millions)	Jobs	Labor Income (\$Millions)	Value Added (\$Millions)
Direct Effects				
Lodging	\$1.7	20.7	\$0.7	\$1.2
Marina Services	\$7.8	100.2	\$2.7	\$4.9
Restaurant	\$7.3	143.6	\$2.5	\$3.5
Recreation & Entertainment	\$1.7	21.7	\$0.6	\$1.1
Repair & Maintenance	\$6.8	85.0	\$2.5	\$3.5
Insurance & Credit	\$3.9	28.2	\$1.7	\$3.6
Gas Service	\$3.8	44.6	\$1.8	\$2.9
Other Retail Trade	\$5.4	101.7	\$2.6	\$4.3
Wholesale Trade	\$3.6	23.1	\$1.5	\$2.7
Other Local Production of Goods	\$13.5	30.1	\$1.8	\$2.6
Total Direct Effects	\$55.3	598.8	\$18.5	\$30.2
Secondary Effects	\$90.0	640.4	\$28.6	\$48.8
Total Effects	\$145.4	1,239.2	\$47.0	\$79.0

The Indiana 7th Congressional District

Table 1. The Indiana 7th Congressional District Description

Area (square miles)	262
Navigable Waterbody (square miles)	5
Total Population (2007)	661,217
Population Density (per square mile) (2007)	2,501
Persons 18+ (2007)	481,757
Number of Households (2007)	277,636

Table 2. Registered Boats Owned by Residents Residing in the Indiana 7th Congressional District

	7th CD	State Total
Number of Registered Boats	14,893	239,227
Type of Registered Boats		
Power Boats	12,530	211,734
Outboards	8,448	161,503
Inboards	657	9,825
Stern Drives	3,303	38,624
Jet Boats	122	1,782
Personal Watercraft	1,912	23,788
Sailboats	451	3,705
Size of Registered Boats		
≤ 15'	6,432	109,423
16'-24'	7,818	121,180
25'-39'	542	7,437
40' +	101	1,187
Per Capita Ownership of Registered Boats		
All Population	23/1000	38/1000
Persons 18 +	31/1000	51/1000
Households	54/1000	95/1000

Table 3. Boating-related Businesses Based on NAICS Codes

Category	7th CD	State Total
Boat Building		
No. of Businesses	1	18
No. of Employees	6	1,638
Total Sales (\$ Millions)	\$0.4	\$263.2
Motors & Engines Mfg.		
No. of Businesses	-	-
No. of Employees	-	-
Total Sales (\$ Millions)	-	-
Accessories & Supplies Mfg.		
No. of Businesses	1	8
No. of Employees	24	230
Total Sales (\$ Millions)	\$2.3	\$22.4
Dealers & Wholesalers		
No. of Businesses	12	138
No. of Employees	142	785
Total Sales (\$ Millions)	\$28.6	\$144.8
Boating Services		
No. of Businesses	3	95
No. of Employees	11	433
Total Sales (\$ Millions)	\$0.4	\$28.1

Figure 1. Location of the Indiana 7th Congressional District



Figure 2. Navigable Waters of the Indiana 7th Congressional District

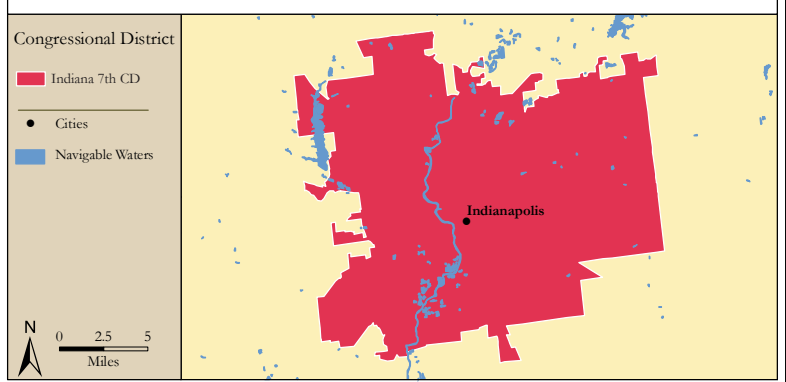


Figure 3. Number of Registered Boats by Zipcode within the Indiana 7th Congressional District

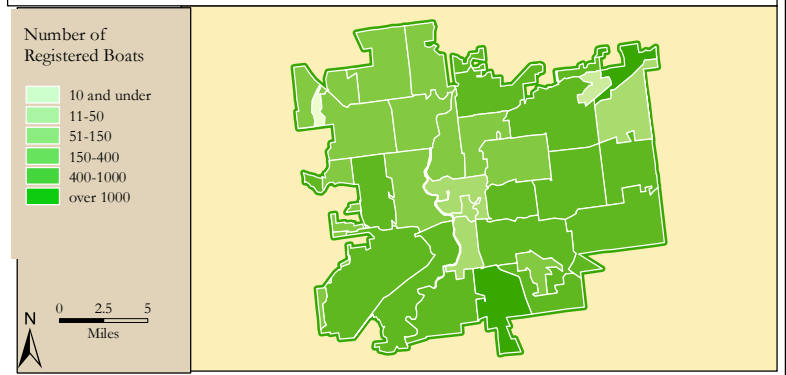
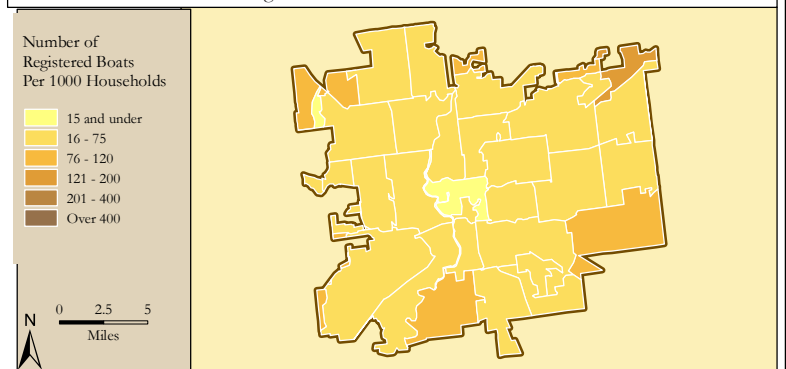


Figure 4. Per Capita (Household) Ownership of Registered Boats by Zipcode within the Indiana 7th Congressional District



Economic Significance of Boating

Table 1. Craft and Trip Expenses by Power and Sailboats Registered in the Indiana 7th Congressional District

Category	Boat Type and Size								Total
	Power <15'	Power 16' - 24'	Power 25' - 39'	Power 40'+	Sail <15'	Sail 16' - 24'	Sail 25' - 39'	Sail 40+	
Number of boats (Thousands of boats)	4.4	7.6	0.5	0.1	0.1	0.2	0.1	0.0	13.0
Annual craft spending (\$ per boat per year)	\$457.9	\$1,655.6	\$7,464.6	\$25,299.0	\$488.7	\$1,830.2	\$7,439.8	\$18,328.8	
Total craft spending (\$ Millions)	\$2.0	\$12.6	\$3.4	\$2.4	\$0.1	\$0.4	\$0.6	\$0.1	\$21.6
Total boat days (Thousands of days)	71.5	190.0	14.0	4.1	2.5	4.4	2.7	0.3	289.5
Total trip spending (\$ per boat per year)	\$935.9	\$2,148.4	\$4,574.4	\$8,039.6	\$1,009.7	\$1,009.7	\$1,963.9	\$5,204.7	
Total trip spending (\$ Millions)	\$4.1	\$16.3	\$2.1	\$0.8	\$0.1	\$0.2	\$0.2	\$0.0	\$23.8
Total craft & trip spending (\$ Millions)	\$6.1	\$28.9	\$5.5	\$3.1	\$0.2	\$0.7	\$0.8	\$0.2	\$45.4

Table 2. Total Spending on Boat Trips by Power and Sailboat Owners Registered in the Indiana 7th CD

Category	Total (\$ Millions)	Percentage
Lodging	\$1.0	4%
Marina services	\$1.9	8%
Restaurant	\$4.4	18%
Groceries	\$4.4	18%
Boat fuel	\$5.5	23%
Auto fuel	\$4.4	18%
Repair & Maintenance	-	-
Marine supplies	-	-
Recreation & Entertainment	\$1.0	4%
Shopping	\$0.7	3%
Other services	-	-
Other goods	\$0.6	3%
Total	\$23.8	100%

Table 3. Total Annual Craft Spending (not including purchases of boats) by Power and Sailboat Owners Registered in the Indiana 7th CD

Category	Total (\$ Millions)	Percentage
Slip	\$3.1	14%
Loan Payments	\$6.9	32%
Replacement Motors	\$0.3	1%
Replacement Trailers	\$0.1	0%
Insurance	\$2.0	9%
Repairs	\$4.3	20%
Accessories	\$4.1	19%
Taxes	\$0.9	4%
Total	\$21.6	100%

Table 4. Economic Significance of Trip Spending and Annual Craft Spending by Power and Sailboats Registered in the Indiana 7th CD

	Trip Spending	Annual Craft Spending	Total
Direct Effects			
Sales (\$ Millions)	\$20.2	\$13.6	\$33.7
Jobs	209.9	156.1	365.9
Labor Income (\$ Millions)	\$6.0	\$5.2	\$11.3
Value Added (\$ Millions)	\$9.7	\$8.8	\$18.4
Total Effects			
Sales (\$ Millions)	\$54.2	\$34.3	\$88.5
Jobs	446.5	309.5	756.0
Labor Income (\$ Millions)	\$16.6	\$12.1	\$28.7
Value Added (\$ Millions)	\$28.0	\$20.2	\$48.2

Table 5. Economic Significance of Power and Sailboats Registered in the Indiana 7th CD

Sector/Spending category	Sales (\$ Millions)	Jobs	Labor Income (\$Millions)	Value Added (\$Millions)
Direct Effects				
Lodging	\$1.0	12.0	\$0.4	\$0.7
Marina Services	\$5.0	64.0	\$1.7	\$3.1
Restaurant	\$4.4	86.2	\$1.5	\$2.1
Recreation & Entertainment	\$1.0	12.7	\$0.3	\$0.6
Repair & Maintenance	\$4.3	53.5	\$1.6	\$2.2
Insurance & Credit	\$2.4	17.5	\$1.0	\$2.2
Gas Service	\$2.2	26.3	\$1.1	\$1.7
Other Retail Trade	\$3.3	61.8	\$1.6	\$2.6
Wholesale Trade	\$2.2	13.8	\$0.9	\$1.6
Other Local Production of Goods	\$8.1	18.1	\$1.1	\$1.6
Total Direct Effects	\$33.7	365.9	\$11.3	\$18.4
Secondary Effects	\$54.8	390.1	\$17.4	\$29.7
Total Effects	\$88.5	756.0	\$28.7	\$48.2

The Indiana 8th Congressional District

Table 1. The Indiana 8th Congressional District Description

Area (square miles)	7,042
Navigable Waterbody (square miles)	104
Total Population (2007)	682,365
Population Density (per square mile) (2007)	96
Persons 18+ (2007)	522,539
Number of Households (2007)	273,653

Table 2. Registered Boats Owned by Residents Residing in the Indiana 8th Congressional District

	8th CD	State Total
Number of Registered Boats	26,579	239,227
Type of Registered Boats		
Power Boats	24,529	211,734
Outboards	20,013	161,503
Inboards	694	9,825
Stern Drives	3,696	38,624
Jet Boats	126	1,782
Personal Watercraft	1,834	23,788
Sailboats	216	3,705
Size of Registered Boats		
≤ 15'	13,536	109,423
16'-24'	12,141	121,180
25'-39'	754	7,437
40' +	148	1,187
Per Capita Ownership of Registered Boats		
All Population	39/1000	38/1000
Persons 18 +	51/1000	51/1000
Households	97/1000	95/1000

Table 3. Boating-related Businesses Based on NAICS Codes

Category	8th CD	State Total
Boat Building		
No. of Businesses	1	18
No. of Employees	17	1,638
Total Sales (\$ Millions)	\$1.1	\$263.2
Motors & Engines Mfg.		
No. of Businesses	-	-
No. of Employees	-	-
Total Sales (\$ Millions)	-	-
Accessories & Supplies Mfg.		
No. of Businesses	-	8
No. of Employees	-	230
Total Sales (\$ Millions)	-	\$22.4
Dealers & Wholesalers		
No. of Businesses	14	138
No. of Employees	46	785
Total Sales (\$ Millions)	\$9.1	\$144.8
Boating Services		
No. of Businesses	12	95
No. of Employees	58	433
Total Sales (\$ Millions)	\$3.1	\$28.1

Figure 1. Location of the Indiana 8th Congressional District

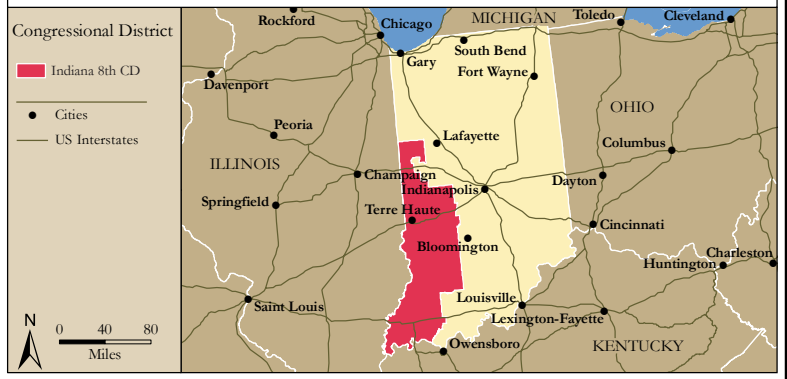


Figure 2. Navigable Waters of the Indiana 8th Congressional District

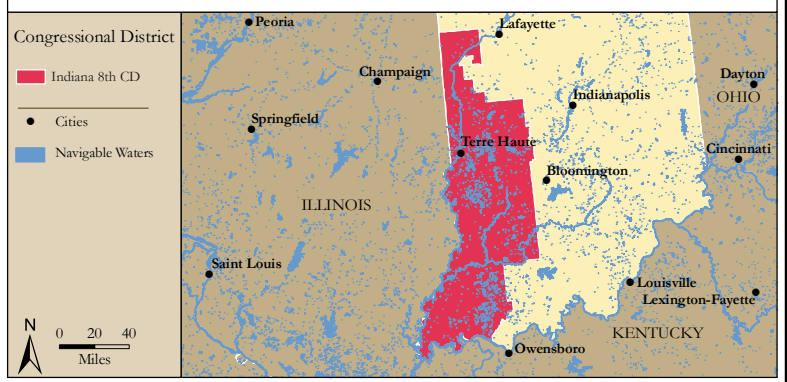


Figure 3. Number of Registered Boats by Zipcode within the Indiana 8th Congressional District

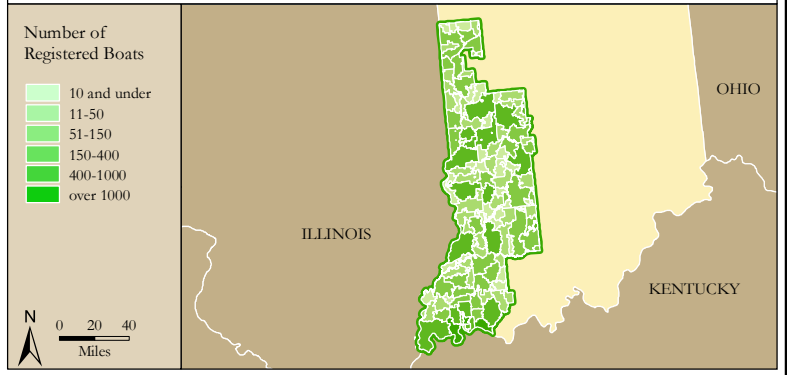
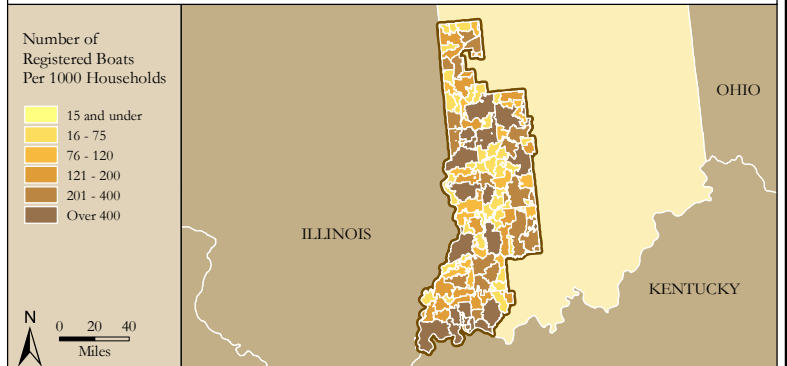


Figure 4. Per Capita (Household) Ownership of Registered Boats by Zipcode within the Indiana 8th Congressional District



Economic Significance of Boating

Table 1. Craft and Trip Expenses by Power and Sailboats Registered in the Indiana 8th Congressional District

Category	Boat Type and Size								Total
	Power <15'	Power 16' - 24'	Power 25' - 39'	Power 40'+	Sail <15'	Sail 16' - 24'	Sail 25' - 39'	Sail 40+	
Number of boats (Thousands of boats)	11.7	12.0	0.7	0.1	0.1	0.1	0.1	0.0	24.7
Annual craft spending (\$ per boat per year)	\$457.9	\$1,655.6	\$7,464.6	\$25,299.0	\$488.7	\$1,830.2	\$7,439.8	\$18,328.8	
Total craft spending (\$ Millions)	\$5.3	\$19.9	\$5.2	\$3.6	\$0.0	\$0.2	\$0.5	\$0.1	\$34.8
Total boat days (Thousands of days)	189.7	301.6	21.3	6.1	1.0	1.9	1.9	0.3	523.8
Total trip spending (\$ per boat per year)	\$935.9	\$2,148.4	\$4,574.4	\$8,039.6	\$1,009.7	\$1,009.7	\$1,963.9	\$5,204.7	
Total trip spending (\$ Millions)	\$10.9	\$25.9	\$3.2	\$1.1	\$0.1	\$0.1	\$0.1	\$0.0	\$41.4
Total craft & trip spending (\$ Millions)	\$16.2	\$45.8	\$8.3	\$4.7	\$0.1	\$0.3	\$0.6	\$0.2	\$76.2

Table 2. Total Spending on Boat Trips by Power and Sailboat Owners Registered in the Indiana 8th CD

Category	Total (\$ Millions)	Percentage
Lodging	\$1.6	4%
Marina services	\$3.4	8%
Restaurant	\$7.5	18%
Groceries	\$7.5	18%
Boat fuel	\$9.5	23%
Auto fuel	\$7.8	19%
Repair & Maintenance	-	-
Marine supplies	-	-
Recreation & Entertainment	\$1.8	4%
Shopping	\$1.3	3%
Other services	-	-
Other goods	\$1.0	2%
Total	\$41.4	100%

Table 3. Total Annual Craft Spending (not including purchases of boats) by Power and Sailboat Owners Registered in the Indiana 8th CD

Category	Total (\$ Millions)	Percentage
Slip	\$4.7	13%
Loan Payments	\$11.0	32%
Replacement Motors	\$0.5	1%
Replacement Trailers	\$0.1	0%
Insurance	\$3.2	9%
Repairs	\$7.0	20%
Accessories	\$6.8	20%
Taxes	\$1.5	4%
Total	\$34.8	100%

Table 4. Economic Significance of Trip Spending and Annual Craft Spending by Power and Sailboats Registered in the Indiana 8th CD

	Trip Spending	Annual Craft Spending	Total
Direct Effects			
Sales (\$ Millions)	\$34.9	\$21.9	\$56.8
Jobs	363.9	251.2	615.2
Labor Income (\$ Millions)	\$10.5	\$8.5	\$19.0
Value Added (\$ Millions)	\$16.8	\$14.2	\$31.0
Total Effects			
Sales (\$ Millions)	\$93.7	\$55.4	\$149.2
Jobs	773.8	498.7	1,272.5
Labor Income (\$ Millions)	\$28.7	\$19.6	\$48.3
Value Added (\$ Millions)	\$48.4	\$32.7	\$81.1

Table 5. Economic Significance of Power and Sailboats Registered in the Indiana 8th CD

Sector/Spending category	Sales (\$ Millions)	Jobs	Labor Income (\$Millions)	Value Added (\$Millions)
Direct Effects				
Lodging	\$1.6	20.5	\$0.7	\$1.2
Marina Services	\$8.0	103.3	\$2.8	\$5.1
Restaurant	\$7.5	148.0	\$2.5	\$3.6
Recreation & Entertainment	\$1.8	23.0	\$0.6	\$1.1
Repair & Maintenance	\$7.0	86.8	\$2.6	\$3.6
Insurance & Credit	\$4.0	28.7	\$1.7	\$3.6
Gas Service	\$3.9	45.7	\$1.8	\$2.9
Other Retail Trade	\$5.6	104.6	\$2.7	\$4.4
Wholesale Trade	\$3.7	23.7	\$1.6	\$2.8
Other Local Production of Goods	\$13.8	30.9	\$1.9	\$2.7
Total Direct Effects	\$56.8	615.2	\$19.0	\$31.0
Secondary Effects	\$92.4	657.3	\$29.3	\$50.1
Total Effects	\$149.2	1,272.5	\$48.3	\$81.1

The Indiana 9th Congressional District

Table 1. The Indiana 9th Congressional District Description

Area (square miles)	6,603
Navigable Waterbody (square miles)	79
Total Population (2007)	700,096
Population Density (per square mile) (2007)	105
Persons 18+ (2007)	538,705
Number of Households (2007)	278,409

Table 2. Registered Boats Owned by Residents Residing in the Indiana 9th Congressional District

	9th CD	State Total
Number of Registered Boats	27,266	239,227
Type of Registered Boats		
Power Boats	25,054	211,734
Outboards	19,607	161,503
Inboards	963	9,825
Stern Drives	4,303	38,624
Jet Boats	181	1,782
Personal Watercraft	1,880	23,788
Sailboats	332	3,705
Size of Registered Boats		
≤ 15'	11,869	109,423
16'-24'	14,074	121,180
25'-39'	1,077	7,437
40' +	246	1,187
Per Capita Ownership of Registered Boats		
All Population	39/1000	38/1000
Persons 18 +	51/1000	51/1000
Households	98/1000	95/1000

Table 3. Boating-related Businesses Based on NAICS Codes

Category	9th CD	State Total
Boat Building		
No. of Businesses	1	18
No. of Employees	8	1,638
Total Sales (\$ Millions)	\$0.5	\$263.2
Motors & Engines Mfg.		
No. of Businesses	-	-
No. of Employees	-	-
Total Sales (\$ Millions)	-	-
Accessories & Supplies Mfg.		
No. of Businesses	-	8
No. of Employees	-	230
Total Sales (\$ Millions)	-	\$22.4
Dealers & Wholesalers		
No. of Businesses	17	138
No. of Employees	93	785
Total Sales (\$ Millions)	\$16.9	\$144.8
Boating Services		
No. of Businesses	20	95
No. of Employees	113	433
Total Sales (\$ Millions)	\$6.7	\$28.1

Figure 1. Location of the Indiana 9th Congressional District



Figure 2. Navigable Waters of the Indiana 9th Congressional District

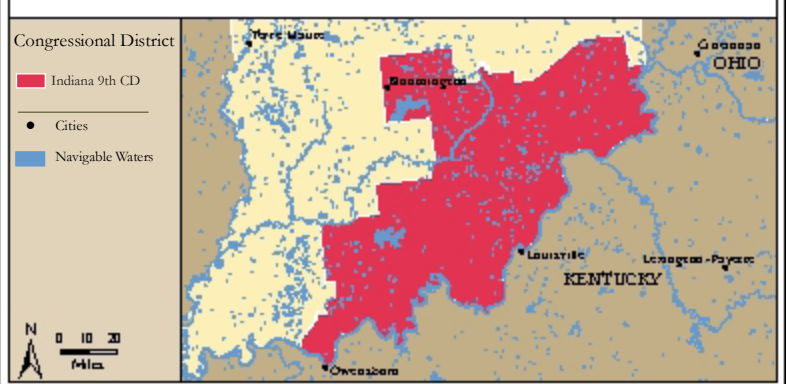


Figure 3. Number of Registered Boats by Zipcode within the Indiana 9th Congressional District

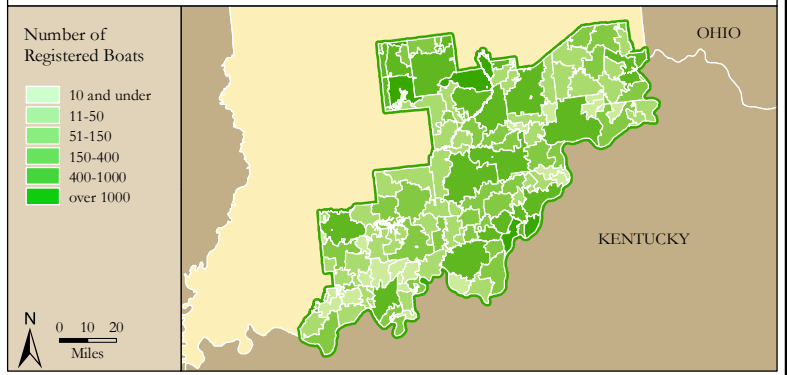
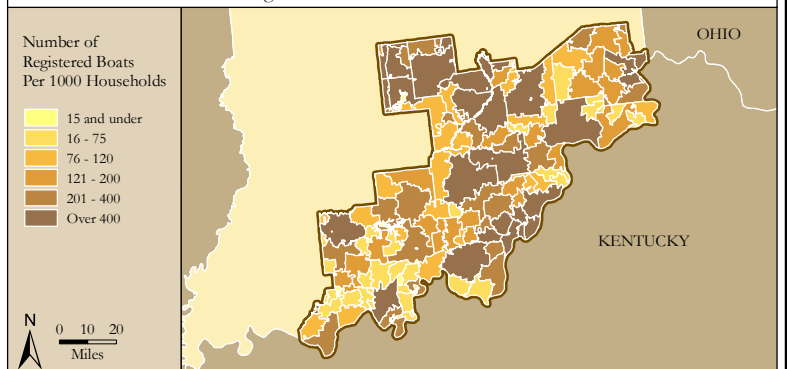


Figure 4. Per Capita (Household) Ownership of Registered Boats by Zipcode within the Indiana 9th Congressional District



Economic Significance of Boating

Table 1. Craft and Trip Expenses by Power and Sailboats Registered in the Indiana 9th Congressional District

Category	Boat Type and Size								Total
	Power <15'	Power 16' - 24'	Power 25' - 39'	Power 40'+	Sail <15'	Sail 16' - 24'	Sail 25' - 39'	Sail 40+	
Number of boats (Thousands of boats)	9.9	13.9	1.0	0.2	0.1	0.2	0.1	0.0	25.4
Annual craft spending (\$ per boat per year)	\$457.9	\$1,655.6	\$7,464.6	\$25,299.0	\$488.7	\$1,830.2	\$7,439.8	\$18,328.8	
Total craft spending (\$ Millions)	\$4.5	\$23.0	\$7.4	\$6.1	\$0.0	\$0.3	\$0.7	\$0.1	\$42.1
Total boat days (Thousands of days)	161.4	348.4	30.2	10.5	1.5	3.1	2.9	0.2	558.2
Total trip spending (\$ per boat per year)	\$935.9	\$2,148.4	\$4,574.4	\$8,039.6	\$1,009.7	\$1,009.7	\$1,963.9	\$5,204.7	
Total trip spending (\$ Millions)	\$9.3	\$29.9	\$4.5	\$1.9	\$0.1	\$0.2	\$0.2	\$0.0	\$46.1
Total craft & trip spending (\$ Millions)	\$13.8	\$52.9	\$11.9	\$8.1	\$0.1	\$0.5	\$0.9	\$0.1	\$88.2

Table 2. Total Spending on Boat Trips by Power and Sailboat Owners Registered in the Indiana 9th CD

Category	Total (\$ Millions)	Percentage
Lodging	\$1.8	4%
Marina services	\$3.8	8%
Restaurant	\$8.4	18%
Groceries	\$8.3	18%
Boat fuel	\$10.9	24%
Auto fuel	\$8.4	18%
Repair & Maintenance	-	-
Marine supplies	-	-
Recreation & Entertainment	\$1.9	4%
Shopping	\$1.4	3%
Other services	-	-
Other goods	\$1.1	2%
Total	\$46.1	100%

Table 3. Total Annual Craft Spending (not including purchases of boats) by Power and Sailboat Owners Registered in the Indiana 9th CD

Category	Total (\$ Millions)	Percentage
Slip	\$5.9	14%
Loan Payments	\$13.7	33%
Replacement Motors	\$0.5	1%
Replacement Trailers	\$0.1	0%
Insurance	\$3.8	9%
Repairs	\$8.3	20%
Accessories	\$8.0	19%
Taxes	\$1.8	4%
Total	\$42.1	100%

Table 4. Economic Significance of Trip Spending and Annual Craft Spending by Power and Sailboats Registered in the Indiana 9th CD

	Trip Spending	Annual Craft Spending	Total
Direct Effects			
Sales (\$ Millions)	\$39.0	\$26.2	\$65.3
Jobs	405.2	301.7	706.9
Labor Income (\$ Millions)	\$11.7	\$10.1	\$21.8
Value Added (\$ Millions)	\$18.7	\$17.0	\$35.7
Total Effects			
Sales (\$ Millions)	\$104.8	\$66.5	\$171.2
Jobs	862.6	598.4	1,461.1
Labor Income (\$ Millions)	\$32.0	\$23.5	\$55.5
Value Added (\$ Millions)	\$54.1	\$39.2	\$93.2

Table 5. Economic Significance of Power and Sailboats Registered in the Indiana 9th CD

Sector/Spending category	Sales (\$ Millions)	Jobs	Labor Income (\$Millions)	Value Added (\$Millions)
Direct Effects				
Lodging	\$1.8	22.6	\$0.7	\$1.3
Marina Services	\$9.7	124.0	\$3.4	\$6.1
Restaurant	\$8.4	165.7	\$2.8	\$4.0
Recreation & Entertainment	\$1.9	24.7	\$0.7	\$1.2
Repair & Maintenance	\$8.3	104.1	\$3.1	\$4.3
Insurance & Credit	\$4.7	34.3	\$2.0	\$4.3
Gas Service	\$4.3	51.0	\$2.1	\$3.3
Other Retail Trade	\$6.3	118.9	\$3.1	\$5.0
Wholesale Trade	\$4.2	26.7	\$1.8	\$3.2
Other Local				
Production of Goods	\$15.6	34.8	\$2.1	\$3.0
Total Direct Effects	\$65.3	706.9	\$21.8	\$35.7
Secondary Effects	\$106.0	754.2	\$33.7	\$57.5
Total Effects	\$171.2	1,461.1	\$55.5	\$93.2