

# The New Hampshire 1st Congressional District

**Table 1. The New Hampshire 1st Congressional District Description**

Area (square miles)	2,449
Navigable Waterbody (square miles)	208
Total Population (2007)	672,097
Population Density (per square mile) (2007)	257
Persons 18+ (2007)	523,706
Number of Households (2007)	257,743

**Table 2. Registered Boats Owned by Residents Residing in the New Hampshire 1st Congressional District**

	1st CD	State Total
<b>Number of Registered Boats</b>	41,576	76,061
<b>Type of Registered Boats</b>		
Power Boats	34,604	64,496
Outboards	22,238	43,682
Inboards	3,229	5,212
Stern Drives	8,711	14,900
Jet Boats	426	702
Personal Watercraft	4,534	6,993
Sailboats	2,438	4,572
<b>Size of Registered Boats</b>		
≤ 15'	17,585	33,808
16'-24'	20,115	36,076
25'-39'	3,437	5,490
40' +	439	687
<b>Per Capita Ownership of Registered Boats</b>		
All Population	62/1000	58/1000
Persons 18 +	79/1000	77/1000
Households	161/1000	145/1000

**Table 3. Boating-related Businesses Based on NAICS Codes**

Category	1st CD	State Total
<b>Boat Building</b>		
No. of Businesses	2	6
No. of Employees	38	47
Total Sales (\$ Millions)	\$4.8	\$7.8
<b>Motors &amp; Engines Mfg.</b>		
No. of Businesses	-	1
No. of Employees	-	4
Total Sales (\$ Millions)	-	\$0.1
<b>Accessories &amp; Supplies Mfg.</b>		
No. of Businesses	3	4
No. of Employees	18	19
Total Sales (\$ Millions)	\$1.7	\$1.9
<b>Dealers &amp; Wholesalers</b>		
No. of Businesses	46	77
No. of Employees	401	472
Total Sales (\$ Millions)	\$89.9	\$104.0
<b>Boating Services</b>		
No. of Businesses	49	68
No. of Employees	470	549
Total Sales (\$ Millions)	\$33.4	\$38.5

Figure 1. Location of the New Hampshire 1st Congressional District

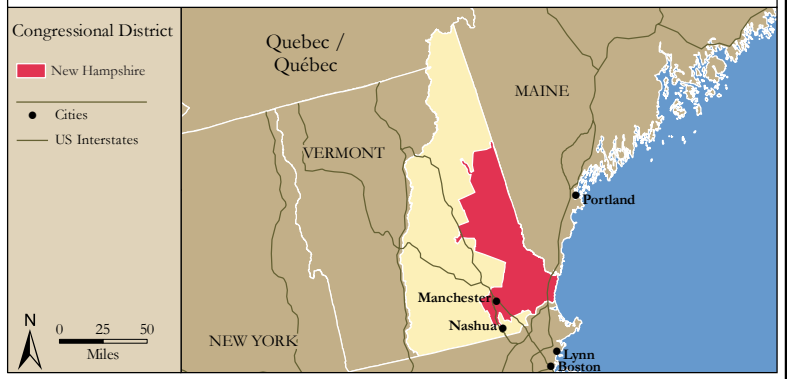


Figure 2. Navigable Waters of the New Hampshire 1st Congressional District

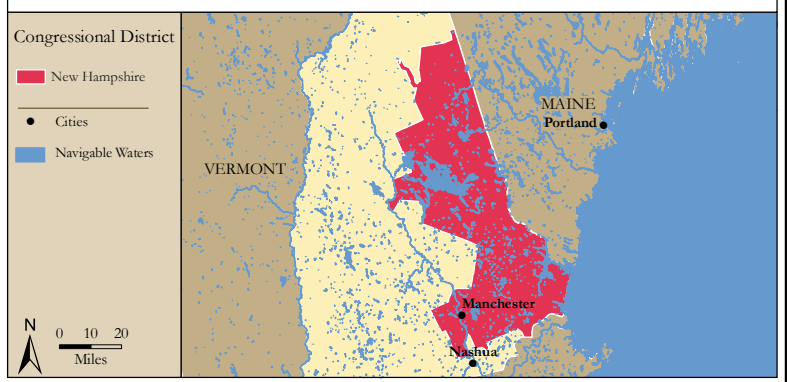


Figure 3. Number of Registered Boats by Zipcode within the New Hampshire 1st Congressional District

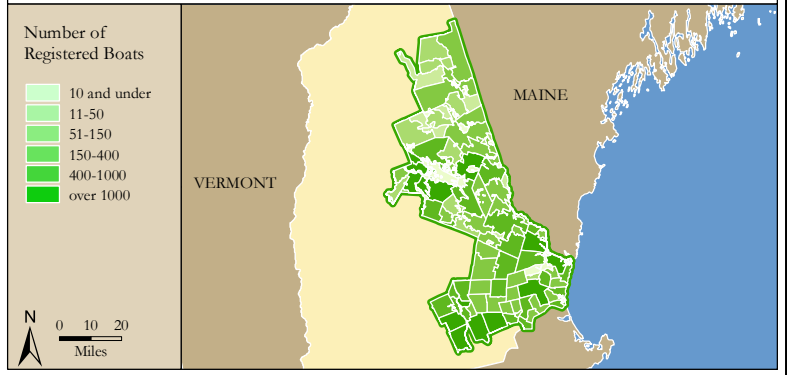
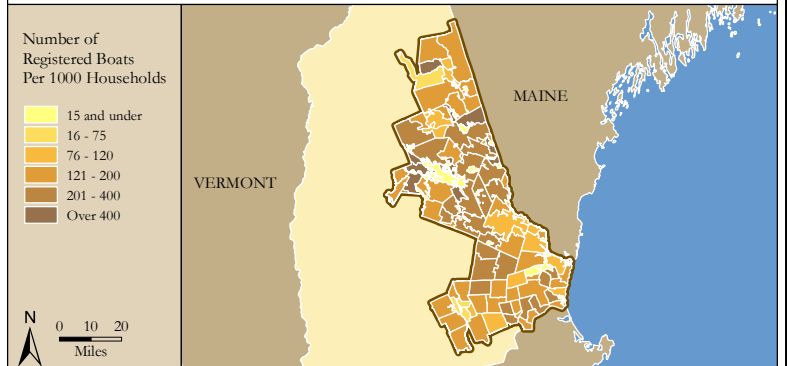


Figure 4. Per Capita (Household) Ownership of Registered Boats by Zipcode within the New Hampshire 1st Congressional District



# Economic Significance of Boating

**Table 1. Craft and Trip Expenses by Power and Sailboats Registered in the New Hampshire 1st Congressional District**

Category	Boat Type and Size								Total
	Power <15'	Power 16' - 24'	Power 25' - 39'	Power 40'+	Sail <15'	Sail 16' - 24'	Sail 25' - 39'	Sail 40+	
Number of boats (Thousands of boats)	12.2	19.3	2.7	0.3	0.8	0.8	0.7	0.1	37.0
Annual craft spending (\$ per boat per year)	\$457.9	\$1,655.6	\$7,464.6	\$25,299.0	\$488.7	\$1,830.2	\$7,439.8	\$18,328.8	
Total craft spending (\$ Millions)	\$5.6	\$32.0	\$20.4	\$7.6	\$0.4	\$1.4	\$5.2	\$2.5	\$75.2
Total boat days (Thousands of days)	199.0	484.4	83.8	13.1	15.9	14.9	22.1	6.3	839.6
Total trip spending (\$ per boat per year)	\$935.9	\$2,148.4	\$4,574.4	\$8,039.6	\$1,009.7	\$1,009.7	\$1,963.9	\$5,204.7	
Total trip spending (\$ Millions)	\$11.4	\$41.6	\$12.5	\$2.4	\$0.8	\$0.8	\$1.4	\$0.7	\$71.6
Total craft & trip spending (\$ Millions)	\$17.0	\$73.6	\$32.9	\$10.0	\$1.2	\$2.2	\$6.6	\$3.2	\$146.9

**Table 2. Total Spending on Boat Trips by Power and Sailboat Owners Registered in the New Hampshire 1st CD**

Category	Total (\$ Millions)	Percentage
Lodging	\$2.6	4%
Marina services	\$6.2	9%
Restaurant	\$13.5	19%
Groceries	\$12.9	18%
Boat fuel	\$17.3	24%
Auto fuel	\$12.1	17%
Repair & Maintenance	-	-
Marine supplies	-	-
Recreation & Entertainment	\$2.9	4%
Shopping	\$2.2	3%
Other services	-	-
Other goods	\$1.8	2%
<b>Total</b>	<b>\$71.6</b>	<b>100%</b>

**Table 3. Total Annual Craft Spending (not including purchases of boats) by Power and Sailboat Owners Registered in the New Hampshire 1st CD**

Category	Total (\$ Millions)	Percentage
Slip	\$11.8	16%
Loan Payments	\$24.0	32%
Replacement Motors	\$0.8	1%
Replacement Trailers	\$0.2	0%
Insurance	\$6.6	9%
Repairs	\$15.0	20%
Accessories	\$13.9	18%
Taxes	\$3.0	4%
<b>Total</b>	<b>\$75.2</b>	<b>100%</b>

**Table 4. Economic Significance of Trip Spending and Annual Craft Spending by Power and Sailboats Registered in the New Hampshire 1st CD**

	Trip Spending	Annual Craft Spending	Total
<b>Direct Effects</b>			
Sales (\$ Millions)	\$61.3	\$47.6	\$108.9
Jobs	639.1	551.1	1,190.2
Labor Income (\$ Millions)	\$18.3	\$18.3	\$36.6
Value Added (\$ Millions)	\$29.3	\$30.7	\$60.0
<b>Total Effects</b>			
Sales (\$ Millions)	\$164.7	\$120.7	\$285.4
Jobs	1,357.6	1,091.3	2,448.9
Labor Income (\$ Millions)	\$50.2	\$42.6	\$92.8
Value Added (\$ Millions)	\$84.8	\$71.0	\$155.9

**Table 5. Economic Significance of Power and Sailboats Registered in the New Hampshire 1st CD**

Sector/Spending category	Sales (\$ Millions)	Jobs	Labor Income (\$Millions)	Value Added (\$Millions)
<b>Direct Effects</b>				
Lodging	\$2.6	32.9	\$1.1	\$1.9
Marina Services	\$18.0	231.8	\$6.3	\$11.4
Restaurant	\$13.5	267.5	\$4.6	\$6.5
Recreation & Entertainment	\$2.9	37.5	\$1.0	\$1.8
Repair & Maintenance	\$15.0	187.5	\$5.6	\$7.8
Insurance & Credit	\$8.1	58.8	\$3.5	\$7.4
Gas Service	\$6.6	78.0	\$3.2	\$5.0
Other Retail Trade	\$10.4	197.1	\$5.1	\$8.3
Wholesale Trade	\$6.7	42.9	\$2.9	\$5.1
Other Local Production of Goods	\$24.9	56.2	\$3.4	\$4.8
<b>Total Direct Effects</b>	<b>\$108.9</b>	<b>1,190.2</b>	<b>\$36.6</b>	<b>\$60.0</b>
<b>Secondary Effects</b>	<b>\$176.5</b>	<b>1,258.7</b>	<b>\$56.2</b>	<b>\$95.9</b>
<b>Total Effects</b>	<b>\$285.4</b>	<b>2,448.9</b>	<b>\$92.8</b>	<b>\$155.9</b>

# The New Hampshire 2nd Congressional District

**Table 1. The New Hampshire 2nd Congressional District Description**

Area (square miles)	6,519
Navigable Waterbody (square miles)	199
Total Population (2007)	665,616
Population Density (per square mile) (2007)	100
Persons 18+ (2007)	517,615
Number of Households (2007)	247,871

**Table 2. Registered Boats Owned by Residents Residing in the New Hampshire 2nd Congressional District**

	2nd CD	State Total
<b>Number of Registered Boats</b>	34,296	76,061
<b>Type of Registered Boats</b>		
Power Boats	29,736	64,496
Outboards	21,364	43,682
Inboards	1,972	5,212
Stern Drives	6,127	14,900
Jet Boats	273	702
Personal Watercraft	2,438	6,993
Sailboats	2,122	4,572
<b>Size of Registered Boats</b>		
≤ 15'	16,161	33,808
16'-24'	15,857	36,076
25'-39'	2,030	5,490
40' +	248	687
<b>Per Capita Ownership of Registered Boats</b>		
All Population	52/1000	58/1000
Persons 18 +	66/1000	77/1000
Households	138/1000	145/1000

**Table 3. Boating-related Businesses Based on NAICS Codes**

Category	2nd CD	State Total
<b>Boat Building</b>		
No. of Businesses	4	6
No. of Employees	9	47
Total Sales (\$ Millions)	\$3.0	\$7.8
<b>Motors &amp; Engines Mfg.</b>		
No. of Businesses	1	1
No. of Employees	4	4
Total Sales (\$ Millions)	\$0.1	\$0.1
<b>Accessories &amp; Supplies Mfg.</b>		
No. of Businesses	1	4
No. of Employees	1	19
Total Sales (\$ Millions)	\$0.3	\$1.9
<b>Dealers &amp; Wholesalers</b>		
No. of Businesses	31	77
No. of Employees	73	472
Total Sales (\$ Millions)	\$14.4	\$104.0
<b>Boating Services</b>		
No. of Businesses	19	68
No. of Employees	84	549
Total Sales (\$ Millions)	\$5.5	\$38.5

Figure 1. Location of the New Hampshire 2nd Congressional District

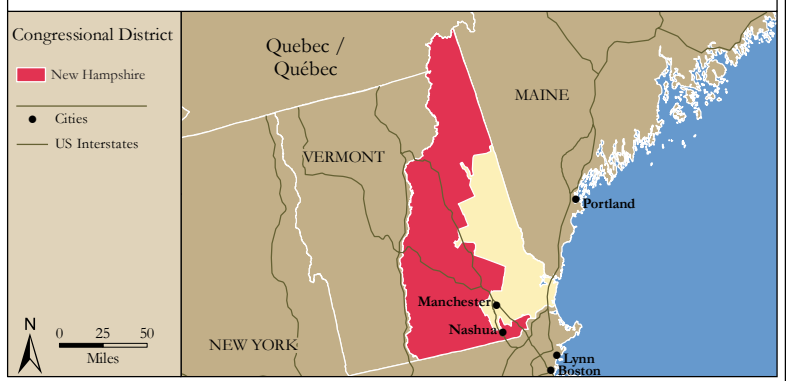


Figure 2. Navigable Waters of the New Hampshire 2nd Congressional District

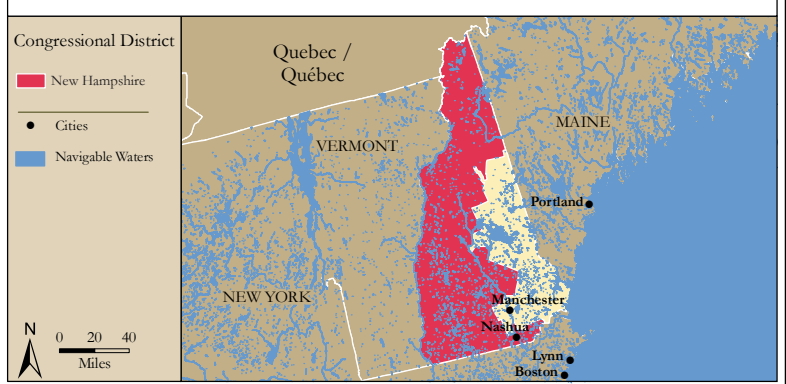


Figure 3. Number of Registered Boats by Zipcode within the New Hampshire 2nd Congressional District

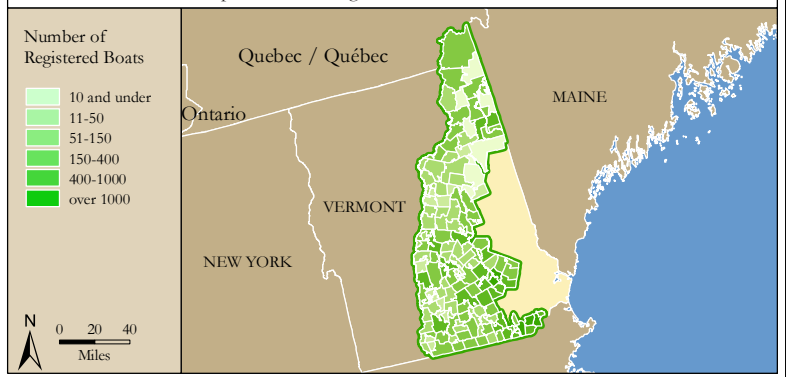
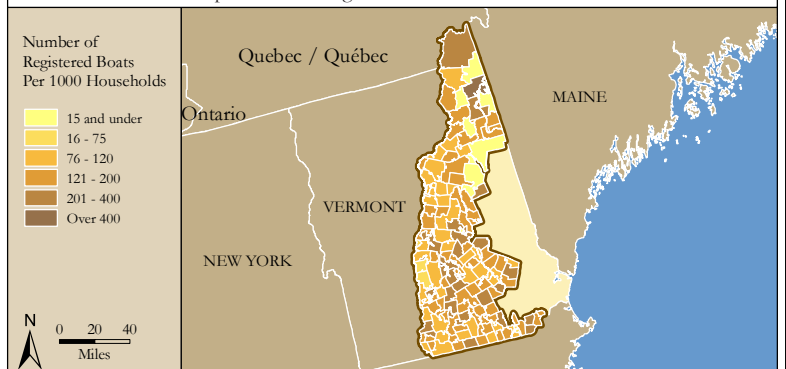


Figure 4. Per Capita (Household) Ownership of Registered Boats by Zipcode within the New Hampshire 2nd Congressional District



# Economic Significance of Boating

**Table 1. Craft and Trip Expenses by Power and Sailboats Registered in the New Hampshire 2nd Congressional District**

Category	Boat Type and Size								Total
	Power <15'	Power 16' - 24'	Power 25' - 39'	Power 40'+	Sail <15'	Sail 16' - 24'	Sail 25' - 39'	Sail 40+	
Number of boats (Thousands of boats)	12.8	15.2	1.5	0.2	0.9	0.7	0.5	0.1	31.9
Annual craft spending (\$ per boat per year)	\$457.9	\$1,655.6	\$7,464.6	\$25,299.0	\$488.7	\$1,830.2	\$7,439.8	\$18,328.8	
Total craft spending (\$ Millions)	\$5.9	\$25.2	\$11.5	\$4.3	\$0.4	\$1.2	\$3.6	\$1.4	\$53.6
Total boat days (Thousands of days)	208.6	380.8	47.4	7.4	17.6	12.5	15.2	3.5	693.1
Total trip spending (\$ per boat per year)	\$935.9	\$2,148.4	\$4,574.4	\$8,039.6	\$1,009.7	\$1,009.7	\$1,963.9	\$5,204.7	
Total trip spending (\$ Millions)	\$12.0	\$32.7	\$7.1	\$1.4	\$0.9	\$0.7	\$1.0	\$0.4	\$56.0
Total craft & trip spending (\$ Millions)	\$17.9	\$57.8	\$18.6	\$5.7	\$1.4	\$1.8	\$4.6	\$1.8	\$109.6

**Table 2. Total Spending on Boat Trips by Power and Sailboat Owners Registered in the New Hampshire 2nd CD**

Category	Total (\$ Millions)	Percentage
Lodging	\$2.1	4%
Marina services	\$4.7	8%
Restaurant	\$10.5	19%
Groceries	\$10.1	18%
Boat fuel	\$12.9	23%
Auto fuel	\$10.0	18%
Repair & Maintenance	-	-
Marine supplies	-	-
Recreation & Entertainment	\$2.4	4%
Shopping	\$1.8	3%
Other services	-	-
Other goods	\$1.4	3%
<b>Total</b>	<b>\$56.0</b>	<b>100%</b>

**Table 3. Total Annual Craft Spending (not including purchases of boats) by Power and Sailboat Owners Registered in the New Hampshire 2nd CD**

Category	Total (\$ Millions)	Percentage
Slip	\$8.1	15%
Loan Payments	\$16.6	31%
Replacement Motors	\$0.6	1%
Replacement Trailers	\$0.2	0%
Insurance	\$4.8	9%
Repairs	\$10.7	20%
Accessories	\$10.3	19%
Taxes	\$2.2	4%
<b>Total</b>	<b>\$53.6</b>	<b>100%</b>

**Table 4. Economic Significance of Trip Spending and Annual Craft Spending by Power and Sailboats Registered in the New Hampshire 2nd CD**

	Trip Spending	Annual Craft Spending	Total
<b>Direct Effects</b>			
Sales (\$ Millions)	\$47.6	\$34.2	\$81.8
Jobs	499.3	395.1	894.4
Labor Income (\$ Millions)	\$14.3	\$13.2	\$27.5
Value Added (\$ Millions)	\$22.9	\$22.1	\$44.9
<b>Total Effects</b>			
Sales (\$ Millions)	\$128.0	\$86.7	\$214.7
Jobs	1,059.1	782.8	1,841.8
Labor Income (\$ Millions)	\$39.1	\$30.6	\$69.7
Value Added (\$ Millions)	\$66.1	\$51.0	\$117.1

**Table 5. Economic Significance of Power and Sailboats Registered in the New Hampshire 2nd CD**

Sector/Spending category	Sales (\$ Millions)	Jobs	Labor Income (\$Millions)	Value Added (\$Millions)
<b>Direct Effects</b>				
Lodging	\$2.1	26.7	\$0.9	\$1.5
Marina Services	\$12.9	165.4	\$4.5	\$8.1
Restaurant	\$10.5	207.5	\$3.6	\$5.0
Recreation & Entertainment	\$2.4	30.3	\$0.8	\$1.5
Repair & Maintenance	\$10.7	134.3	\$4.0	\$5.6
Insurance & Credit	\$5.9	42.6	\$2.5	\$5.4
Gas Service	\$5.1	60.8	\$2.5	\$3.9
Other Retail Trade	\$8.0	150.3	\$3.9	\$6.3
Wholesale Trade	\$5.1	33.0	\$2.2	\$3.9
Other Local Production of Goods	\$19.0	43.4	\$2.6	\$3.7
<b>Total Direct Effects</b>	<b>\$81.8</b>	<b>894.4</b>	<b>\$27.5</b>	<b>\$44.9</b>
<b>Secondary Effects</b>	<b>\$132.9</b>	<b>947.5</b>	<b>\$42.3</b>	<b>\$72.2</b>
<b>Total Effects</b>	<b>\$214.7</b>	<b>1,841.8</b>	<b>\$69.7</b>	<b>\$117.1</b>